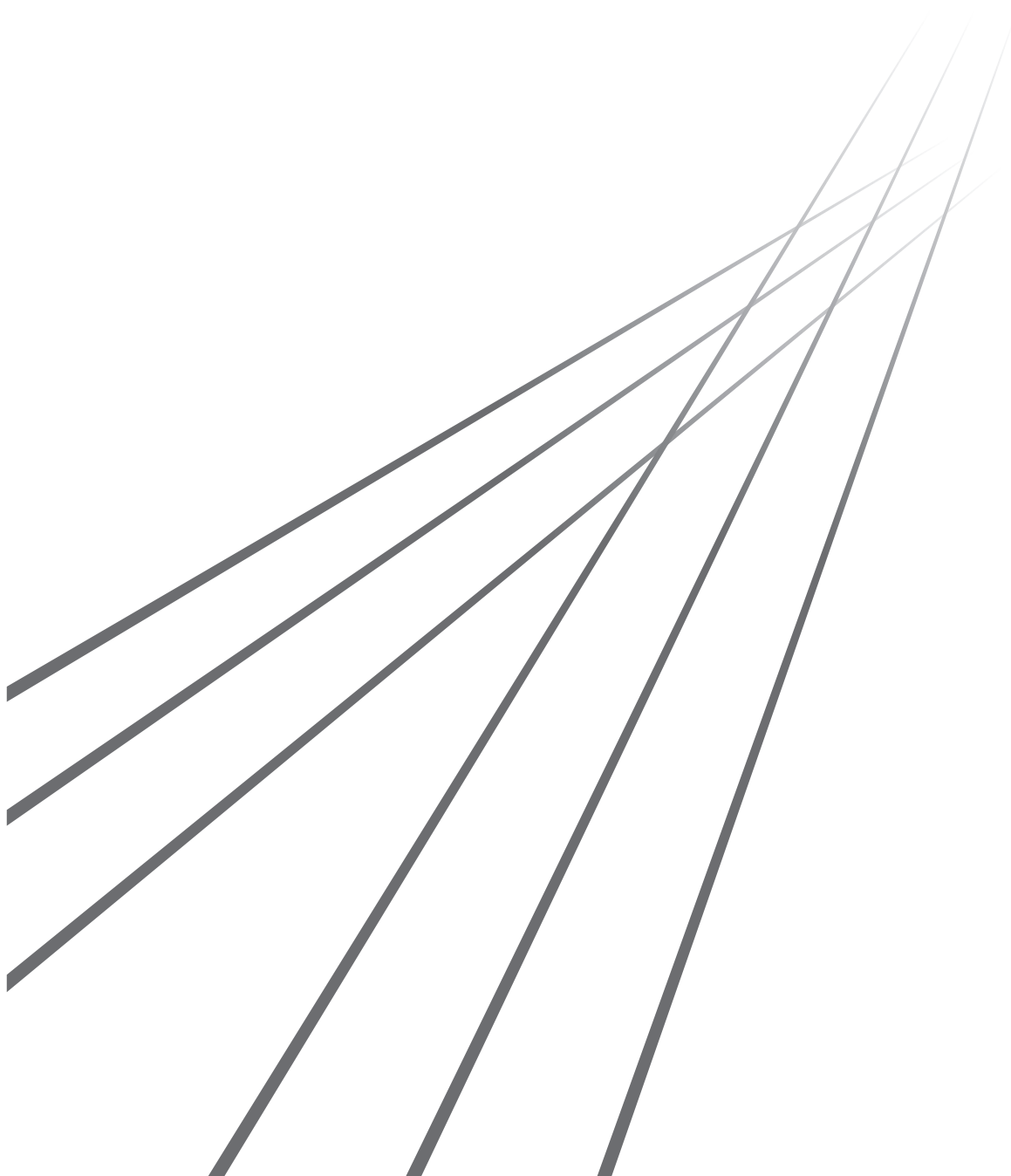




RISO Printer Driver

SF9/SF5 Series

USER'S GUIDE



Preface

Welcome to the high-speed PC printing field presented by RISO printers through RISO Printer Drivers. The RISO printers, which are designed to operate as a high-speed GDI printer, enable you to print various documents you create on different computer platforms very speedily, only if an appropriate RISO Printer Driver is installed in your computer.



The GDI printer, as you know, uses the bit-mapped image data developed on your PC monitor screen as print data source, enabling you to print the exactly same image as of what you see on your PC monitor screen in most cases. Besides, it requires no printer font to print document, thus relieving you of the restrictions on the use of fonts when you create documents on your PC.

The RISO printers can also operate as a network printer under various LAN environments, with an additional network interface card embedded inside.

■ Descriptive contents in this guide

- The reproduction of this guide in whole or in part is strictly prohibited without the permission of RISO KAGAKU CORPORATION.
- The contents of this guide are subject to change in the future without prior notice for improvement of the product.
- Please note that we do not assume any responsibility for the effect of outcomes resulting from the use of this guide and the operation of this machine.

■ Trademarks

-  and  are trademarks or registered trademarks of RISO KAGAKU CORPORATION in the United States and other countries.
- Microsoft, Windows and Windows Vista are either registered trademarks or trademarks of Microsoft Corporation in the United States and/or other countries.
- Other corporate names and/or trademarks are either registered trademarks or trademarks of each company respectively.

■ About symbols



▶ Important matters that require special attention. Read carefully and follow the instructions.



▶ Supplemental explanation that provides useful information.



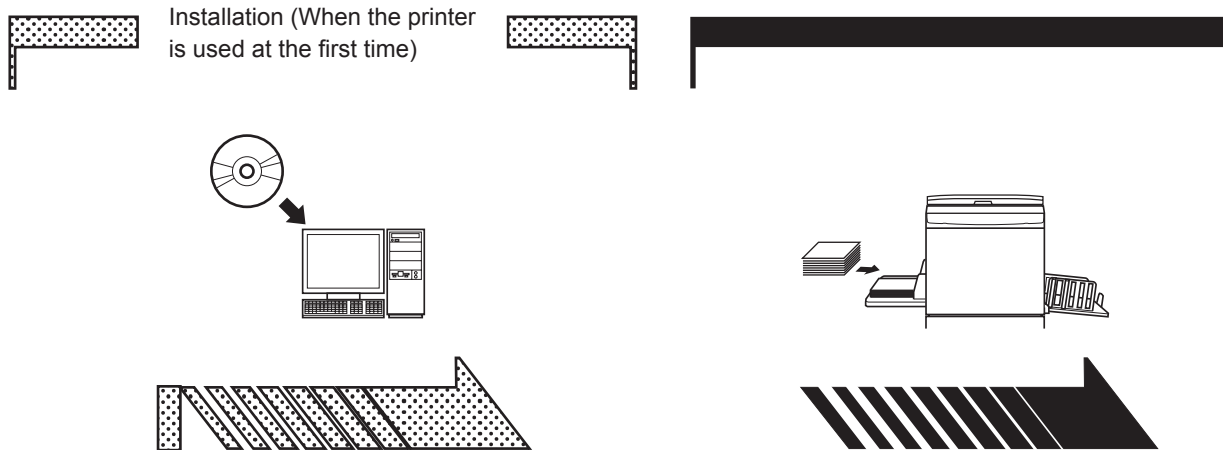
▶ Indicates reference pages.

■ About screens

- The screens and content appearing in this manual may differ from the actual product.
- The screens and messages appear in procedures may differ depending on the type of computer and application.

Procedure before printing

Before you use the printer at the first time, carry out the installation procedure below.
After installation, follow the basic operation procedure. Then, you can print out the documentation data.



Installation (When the printer is used at the first time)

Installing the Printer Driver

Install the RISO Printer Driver into your computer. 7

- Depending on the connecting method, your computer needs to be connected to the printer in advance.

1. Preparing for the printer

Prepare for the printer and put the print paper suitable for the original data to be printed out onto the standard tray.

- For the preparation method for the printer, read the user's guide of the RISO printer.

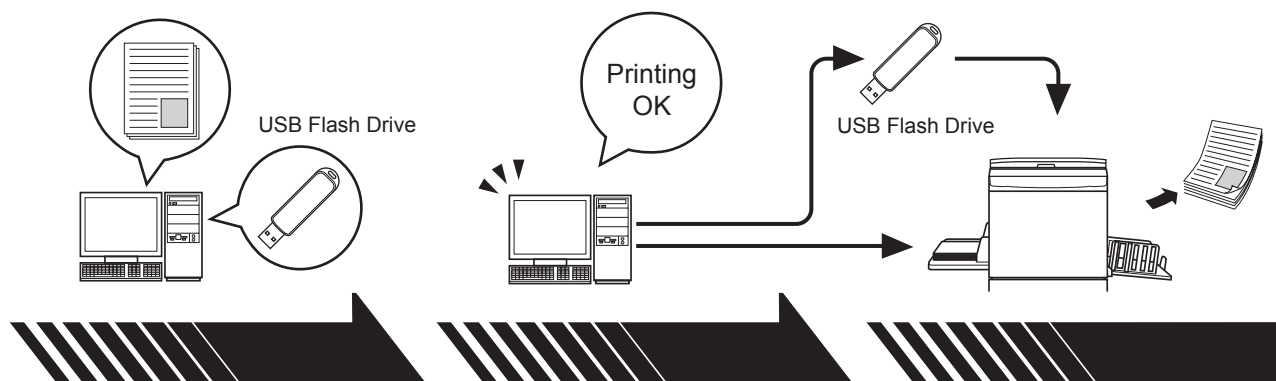
■ OS Support

This Printer Driver supports following OS:

Windows Vista® (32-bit/64-bit)/Windows® 7 (32-bit/64-bit)/Windows® 8.1 (32-bit/64-bit)*/Windows® 10 (32-bit/64-bit)*

* Only compatible with desktop app

Basic operation

**2. Setting**

Open the data you want to print out with your computer, select your Printer Driver (or the USB flash-via-Printer Driver) and make settings for printing.

To print from a USB Flash Drive, connect the USB Flash Drive to your computer.

3. Printing

Open the [Print] dialog box on your PC and click [OK]. The data is transmitted to the printer or stored in the USB Flash Drive.

4. Completion of printing

The printer receives the data and makes master and prints out the data.

To print from a USB Flash Drive, connect the USB Flash Drive to the printer.

Connecting Methods and Printer Driver types

The types of Printer Drivers are as follows:

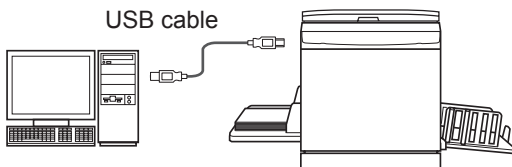
- Printer Driver
- USB flash-via-Printer Driver

Choose the Printer Driver to install according to your environment.

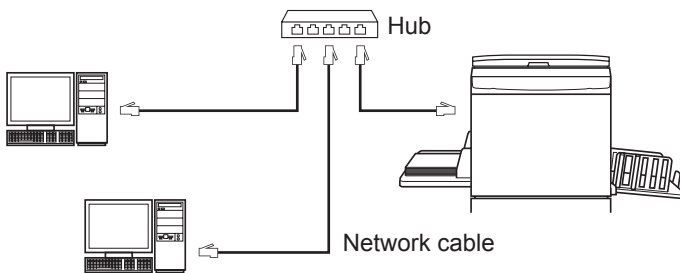
The environment for being connected via cable

In the following environment, the Printer Driver should be used.

■ When connected via USB cable (8)

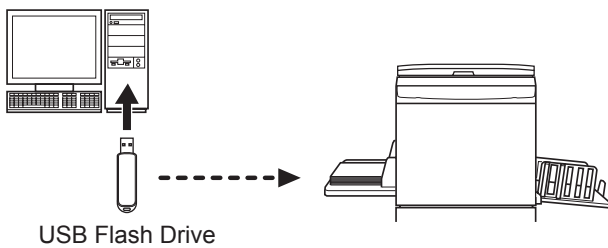


■ When connected via network (13)



The environment for not being connected via cable

Save the data to the USB Flash Drive by using the USB flash-via-Printer Driver (23). Connect the USB Flash Drive to the printer to print out the data.



- ▶ Even in the environment where the printer and your computer are connected via cable, the data can be printed by using USB Flash Drive.

Table of Contents

Procedure before printing	2
Connecting Methods and Printer Driver types	4
▪ The environment for being connected via cable	4
▪ The environment for not being connected via cable	4
Table of Contents	5

Chapter 1 Installing the Printer Driver

USB Connection	8
▪ Installing the Printer Driver	8
Network Connection	13
▪ Connecting with PC	13
▪ Installing the Printer Driver	14
USB Flash Drive Output	23
▪ About USB Flash Drive	23
▪ Installing the USB flash-via-Printer Driver	23
▪ Create a Folder	28
▪ Printing a test page	30

Chapter 2 Working with the Printer Driver

Changing the Printer Driver Configuration	33
Sending and Printing Data	37
Setting the Print Conditions	41
▪ [Basic] Tab	42
▪ [Layout] Tab	47
▪ [Image] Tab	50
▪ [Advanced] Tab	53
▪ [Option] Tab	57
▪ [About] Tab	58
Creating a RISORINC-format file	59
▪ Adding a Local Port for RISORINC Files	59
▪ Selecting a Local Port for RISORINC Files	61
▪ Outputting RISORINC Files	62

Chapter 3 Uninstalling the Printer Driver

Uninstall the Printer Driver	64
---	-----------

Chapter 4 Manually installing / uninstalling the Printer Driver

Windows Vista: Manual installation/uninstallation	67
▪ Manual installation with a USB Cable Connection	67
▪ Manual Installation with a Network Connection/USB Flash Drive Output	69
▪ Manual uninstallation	70
Windows 7: Manual installation/uninstallation	71
▪ Manual installation with a USB Cable Connection	71
▪ Manual Installation with a Network Connection/USB Flash Drive Output	73
▪ Manual uninstallation	74

Windows 8.1: Manual installation/uninstallation	75
▪ Manual installation with a USB Cable Connection	75
▪ Manual Installation with a Network Connection/USB Flash Drive Output	77
▪ Manual uninstallation	78
Windows 10: Manual installation/uninstallation	79
▪ Manual installation with a USB Cable Connection	79
▪ Manual Installation with a Network Connection/USB Flash Drive Output	81
▪ Manual uninstallation	82

Chapter 5 Appendix

Error Message on PC's Display	84
Operation Problems	85
▪ No Printout	85
▪ Unexpected Print Result.....	86
▪ Unexpected Action	87
▪ Unable to Specify Settings	87



Chapter 1

Installing the Printer Driver

The method of installing the Printer Driver using the installer is described here.

USB Connection	8
▪ Installing the Printer Driver	8
Network Connection	13
▪ Connecting with PC	13
▪ Installing the Printer Driver	14
USB Flash Drive Output	23
▪ About USB Flash Drive	23
▪ Installing the USB flash-via-Printer Driver	23
▪ Create a Folder	28
▪ Printing a test page	30

USB Connection

Installing the Printer Driver

This section describes how to install the Printer Driver for windows supporting the Plug&Play installation when your computer and the RISO printer are connected via USB cable.
(Regarding the procedure for manual installation, see [66](#).)



- ▶ You are required to have the administrator's privilege to install the printer driver program in your computer.
- ▶ This Printer Driver does not support server OS or printer sharing.
- ▶ Use a commercially available USB cable (Hi-speed USB, 3m or less).

To update the Printer Driver, change cable connections or reinstall a Printer Driver of the same series, deletion of the driver package is required. Uninstall the installed Printer Driver manually before new installation. "Manual uninstallation" ([66](#))

0



- ▶ Do not connect the USB cable until you are instructed to do so.

1

Insert the [RISO Printer Driver] DVD-ROM into your computer's DVD-ROM drive.

The installer is started. If the installer does not start up, double-click on the [Setup(.exe)] file in the folder below.

For a 32-bit OS:

(DVD-ROM):[Windows 32-bit] folder

For a 64-bit OS:

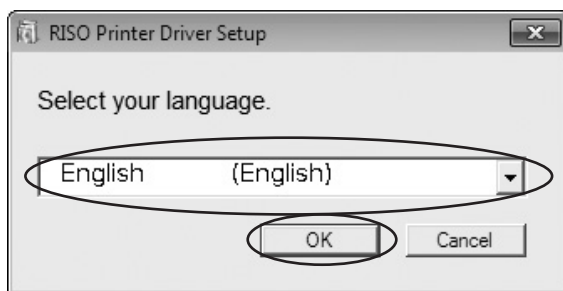
(DVD-ROM):[Windows 64-bit] folder



- ▶ If the [User Account Control] dialog appears, click [Yes] or [Allow] (for Windows Vista).

2

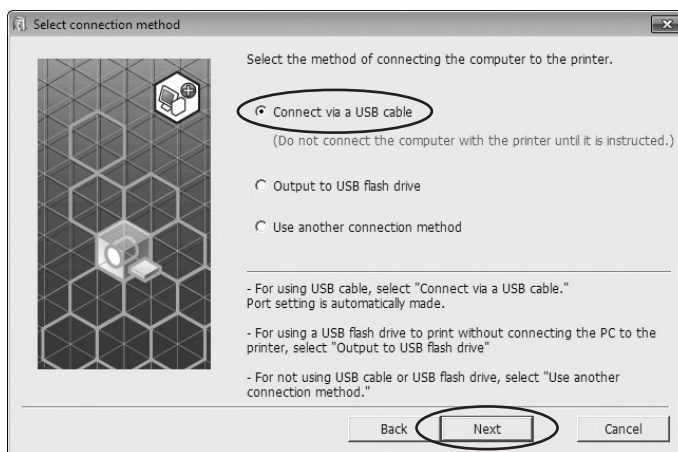
Select your language from the drop-down list, then click [OK].



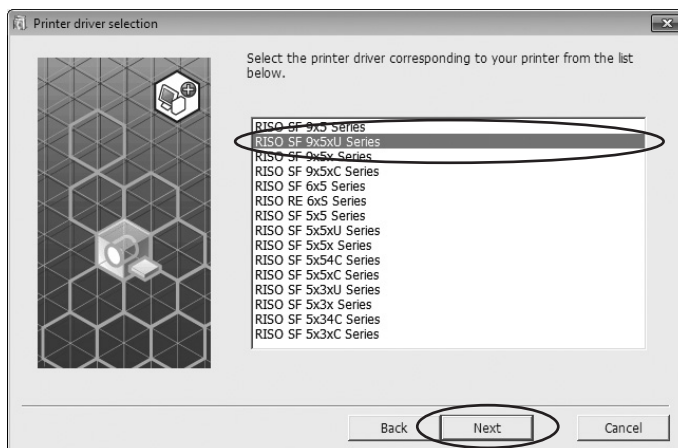
3 Click [Next].



4 Select [Connect via a USB cable] and click [Next].

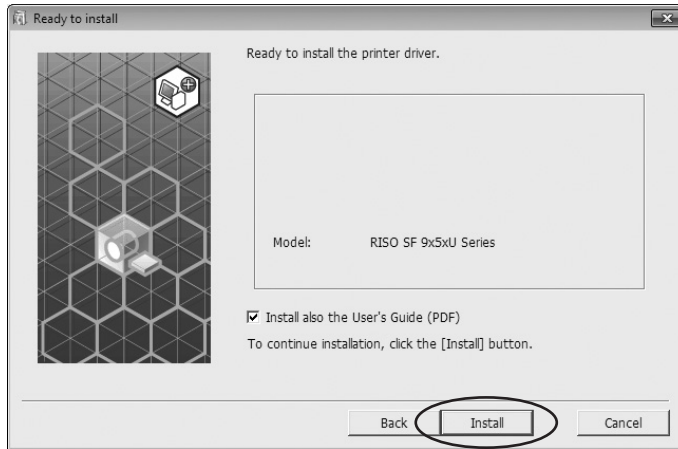


5 Select the printer name you just connected and click [Next].



6 Click [Install].

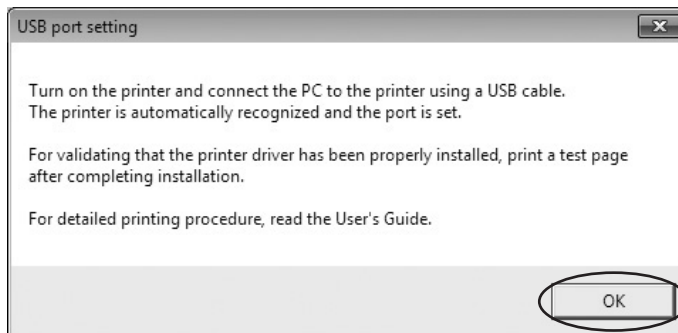
When you place a checkmark in the [Install also the User's Guide (PDF)] checkbox, the User's Guide (PDF) will also be installed.



► When the [Windows Security] dialog appears, continue with installation.

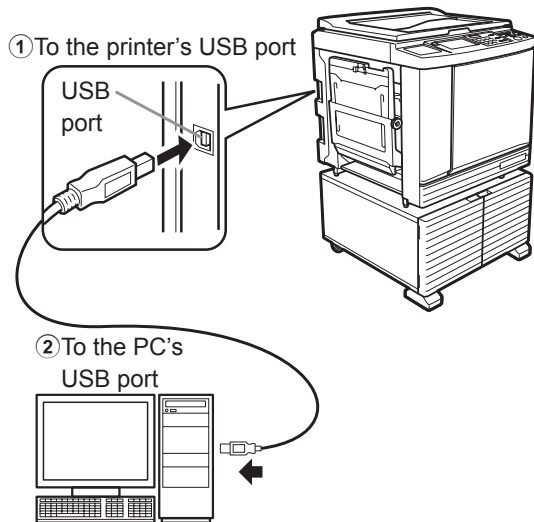
The [USB port setting] dialog box appears.

7 Click [OK].



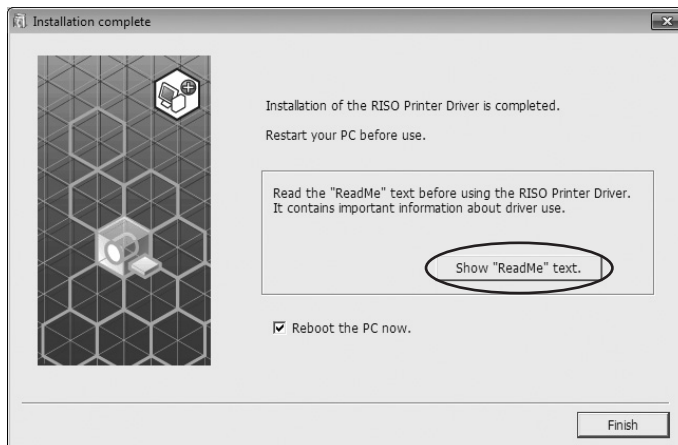
8 Turn on the RISO printer.

9 Connect the computer to the RISO printer with a USB cable (Hi-Speed USB, 3 m or less).



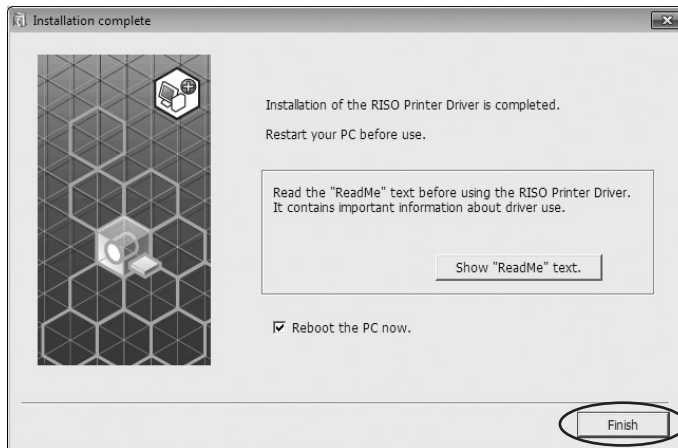
10 Click [Show "ReadMe" text.].

The ReadMe file is opened. Be sure to read all the instructions and notes on it.



11 Click [Finish].

Be sure to restart the computer before using the Printer Driver. If you have checked [Reboot the PC now.], the computer will be shut down and restarted when you click [Finish].

**12 Open the print folder.****For Windows Vista:**

Click on the [Start] icon-[Control Panel] - [Hardware and Sound]-[Printers] and open the [Printers] folder.

For Windows 7:

Click on the [Start] icon-[Control Panel] - [Hardware and Sound]-[Devices and Printers] and open the [Devices and Printers] folder.

For Windows 8.1:

Open the "Apps" screen and click [Control Panel] - [Hardware and Sound] - [Devices and Printers] and open the [Devices and Printers] folder.

For Windows 10:

Right-click on the [Start] icon and click [Control Panel] - [Hardware and Sound] - [Devices and Printers] and open the [Devices and Printers] folder.

13 Open the properties of the printer to which the Printer Driver has been installed.

Right-click on the icon of the printer, and select [Printer Properties] in the displayed menu.

14 Click [Print Test Page].**15 When a message appears, wait for a few seconds and click [Close].****16 Then remove the [RISO Printer Driver] DVD-ROM from the DVD-ROM drive of your computer.**

► Keep the removed DVD-ROM at hand.

Printer driver installation is now completed.

Network Connection

Connecting with PC

■ When using the SF5x3 Series

Optional network interface card, "RISO NETWORK KIT" is required when connecting the computer to the RISO printer through network to use as a network printer.

In advance, connect the RISO printer to the network and configure printer network settings (ex. IP address). Use a commercially available LAN cable (10BASE-T or 100BASE-TX) appropriate for your network environment.

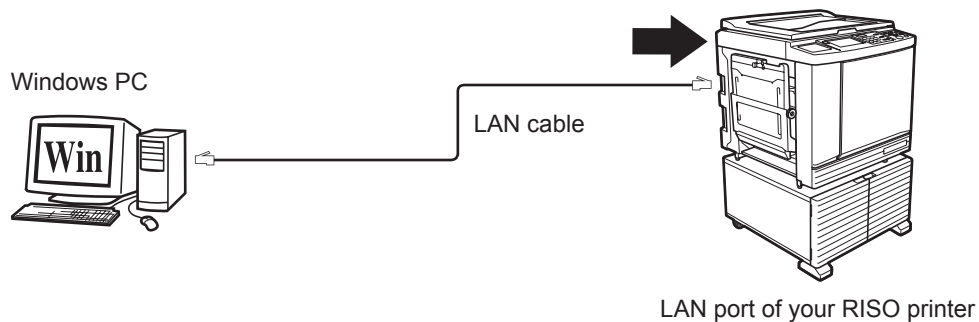


- ▶ Use a LAN cable specified with category 5 or more.

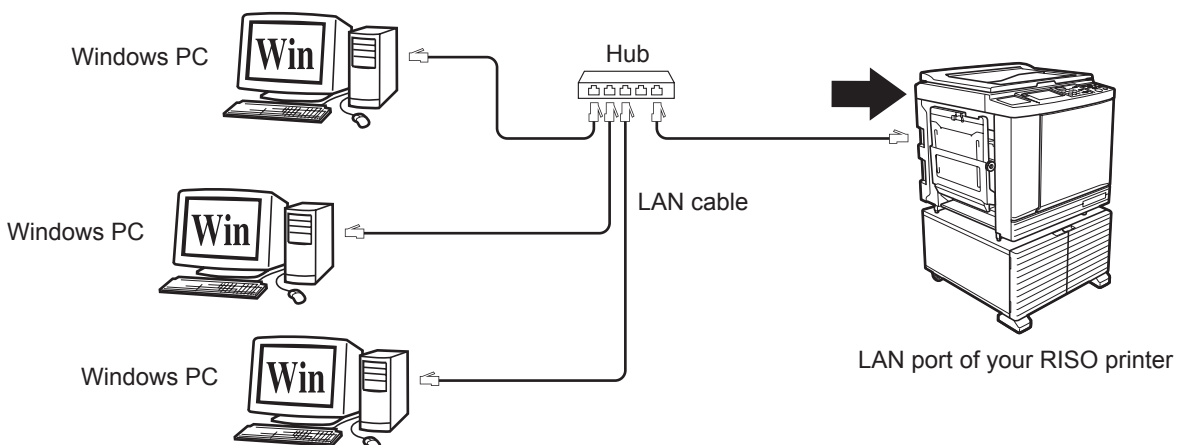


- ▶ You can use either a straight or crossover cable for the LAN cable that will connect to the LAN port of the printer.

■ When your RISO printer is connected with one PC



■ When your RISO printer is connected on network



Installing the Printer Driver

This section describes how to install the RISO Printer Driver when the computer is connected to the RISO printer through network.

(Regarding the procedure for manual installation, see [66](#).)



- ▶ You are required to have the administrator's privilege to install the Printer Driver program in your computer.
- ▶ This Printer Driver does not support server OS or printer sharing.



- ▶ When connecting to a commercial print server etc. on the network, refer to the instruction manual provided by the manufacturer.

1

Insert the [RISO Printer Driver] DVD-ROM into your computer's DVD-ROM drive.

The installer is started. If the installer does not start up, double-click on the [Setup(.exe)] file in the folder below.

For a 32-bit OS:

(DVD-ROM):[Windows 32-bit] folder

For a 64-bit OS:

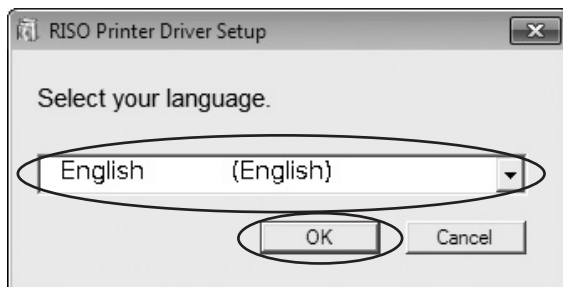
(DVD-ROM):[Windows 64-bit] folder



- ▶ If the [User Account Control] dialog appears, click [Yes] or [Allow] (for Windows Vista).

2

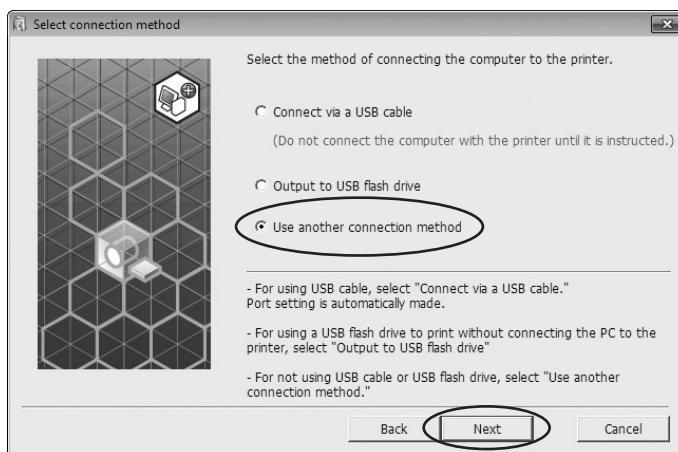
Select your language from the drop-down list, then click [OK].



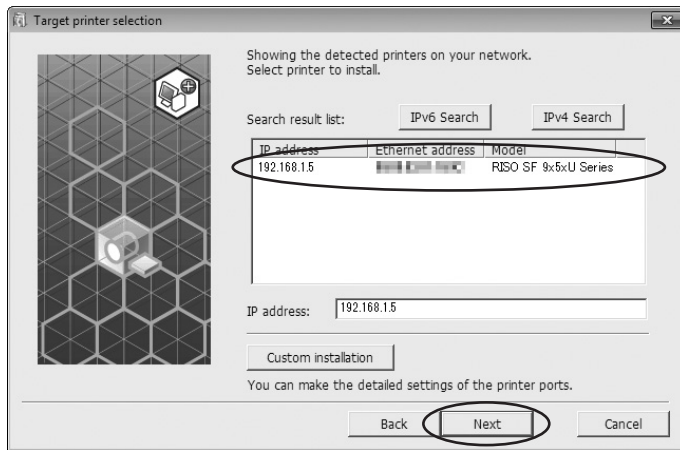
3 Click [Next].



4 Select [Use another connection method] and click [Next].



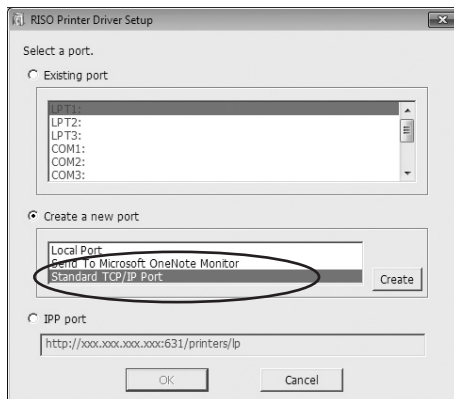
5 Select the printer and click [Next].



- ▶ You can also enter the IP address manually.
- ▶ When you set a transmission system or port optionally, click [Custom installation] and select an existing port or create a new port.

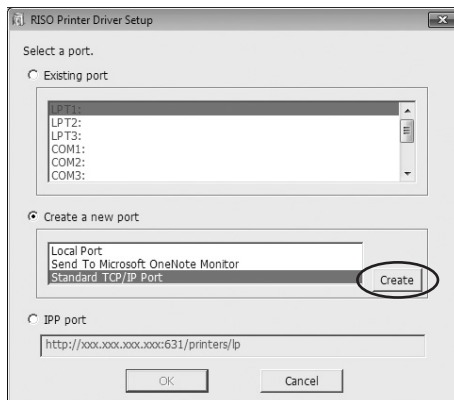
The following procedure shows how to create a Standard TCP/IP Port.

- 1) Select [Create a new port], and then [Standard TCP/IP Port].

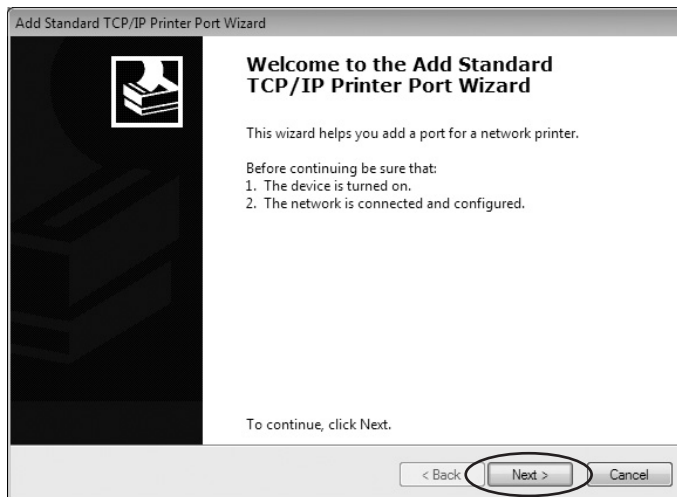


- 2) Click [Create].

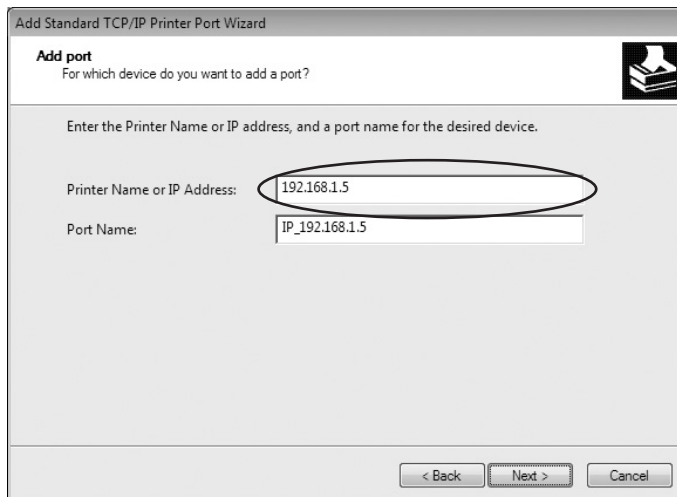
The [Add Standard TCP/IP Printer Port Wizard] dialog box appears.



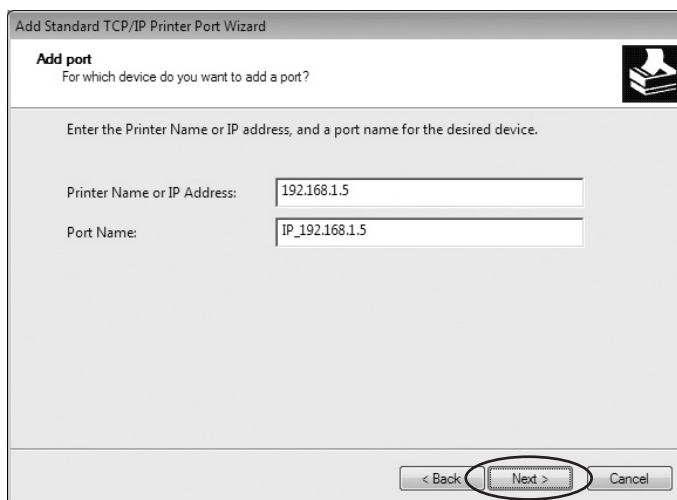
3) Click [Next].



4) Enter the IP address of your printer.
Port name will be entered automatically.



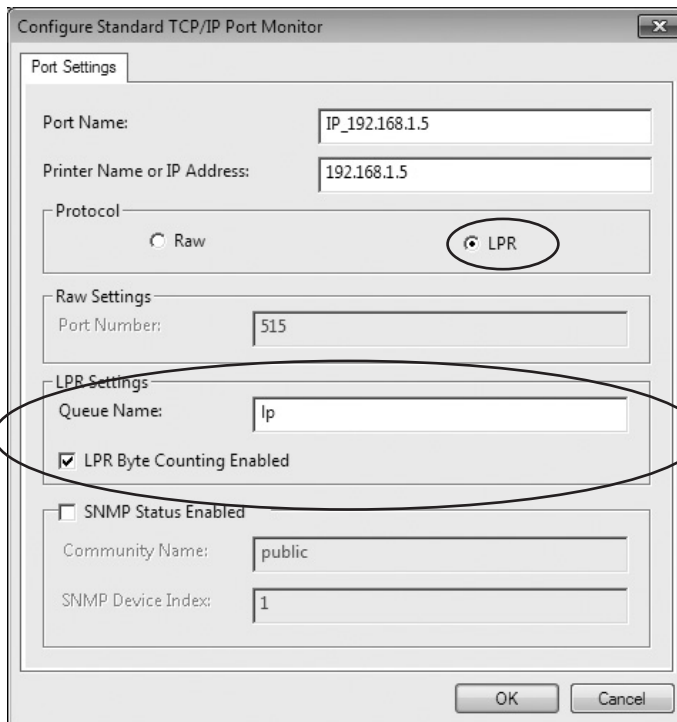
5) Click [Next].



6) Select [Custom] and click [Settings].



7) Select [LPR] for [Protocol], input "lp" as the [Queue Name] under [LPR settings], and place a checkmark in the [LPR Byte Counting Enabled] checkbox.



► After the LPR function is added, your computer requires restarting. Therefore, be sure to store the necessary data in your computer before carrying out the operation. Follow the instruction manual of Windows or Help for details.



► The images may not be printed properly if [LPR Byte Counting Enabled] is not selected.

8) Click [OK].

Configure Standard TCP/IP Port Monitor

Port Settings

Port Name: IP_192.168.1.5

Printer Name or IP Address: 192.168.1.5

Protocol

Raw LPR

Raw Settings

Port Number: 515

LPR Settings

Queue Name: lp

LPR Byte Counting Enabled

SNMP Status Enabled

Community Name: public

SNMP Device Index: 1

OK Cancel

9) Click [Next].

Add Standard TCP/IP Printer Port Wizard

Additional port information required
The device could not be identified.

The device is not found on the network. Be sure that:

1. The device is turned on.
2. The network is connected.
3. The device is properly configured.
4. The address on the previous page is correct.

If you think the address is not correct, click Back to return to the previous page. Then correct the address and perform another search on the network. If you are sure the address is correct, select the device type below.

Device Type

Standard Generic Network Card

Custom Settings...

< Back Next > Cancel

10) Click [Finish].

Add Standard TCP/IP Printer Port Wizard

Completing the Add Standard TCP/IP Printer Port Wizard

You have selected a port with the following characteristics.

SNMP: No

Protocol: LPR, lp

Device: 192.168.1.5

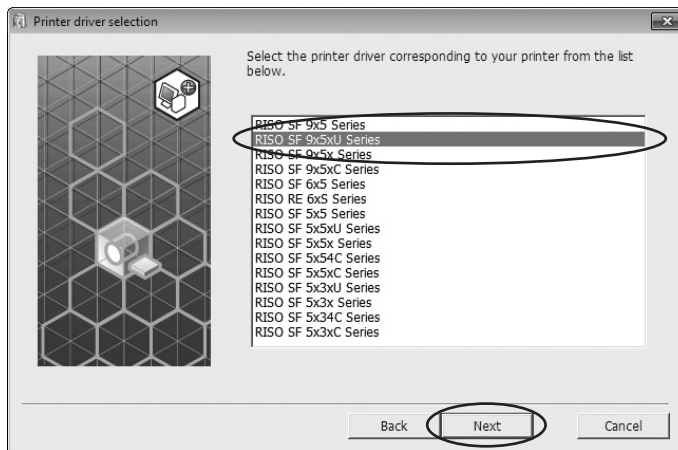
Port Name: IP_192.168.1.5

Adapter Type:

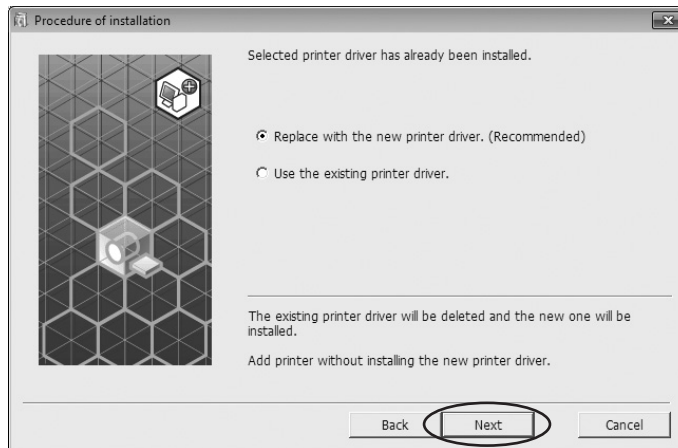
To complete this wizard, click Finish.

< Back Finish Cancel

6 Select the printer name to use and click [Next].

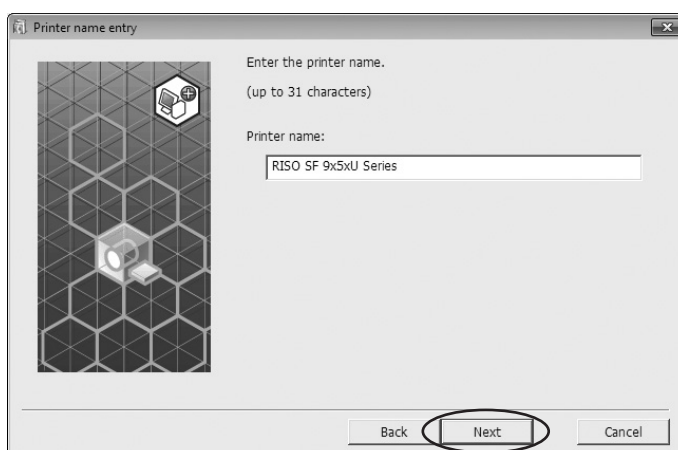


▶ When the selected Printer Driver is already installed, [Procedure of installation] dialog box appears, click [Next].



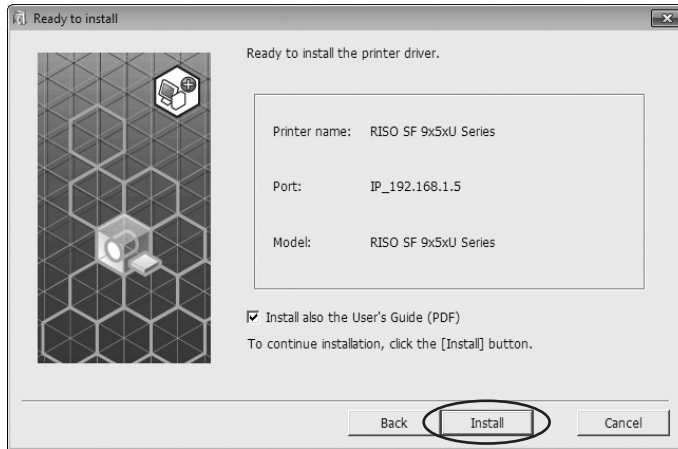
7 Click [Next].

You can also change the name of the printer.



8 Click [Install].

When you place a checkmark in the [Install also the User's Guide (PDF)] checkbox, the User's Guide (PDF) will also be installed.



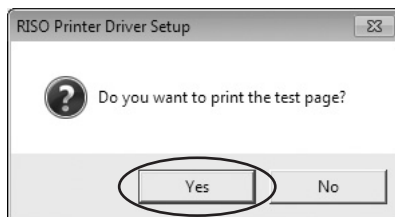
▶ When the [Windows Security] dialog appears, continue with installation.

9 [Do you want to print a test page?] appears, then click [Yes].

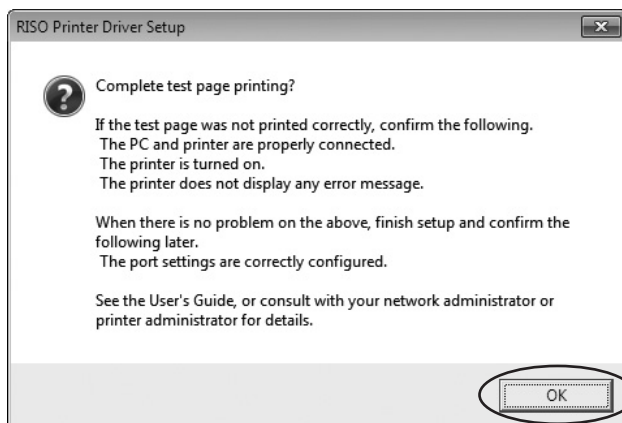
Set A4/Letter paper in the printer beforehand.



▶ Load paper with the short edge first.

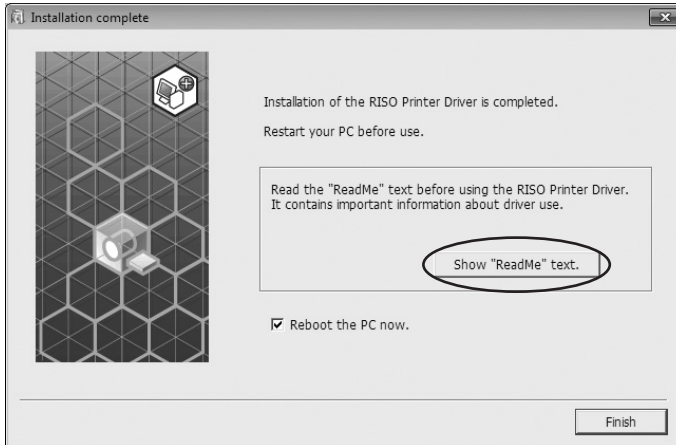


10 Check the test print was properly printed and click [OK].



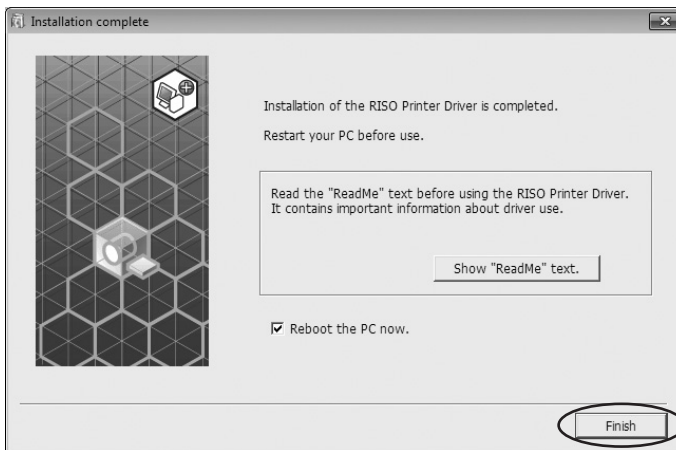
11 Click [Show “ReadMe” text].

The ReadMe file is opened. Be sure to read all the instructions and notes on it.



12 Click [Finish].

Be sure to restart the computer before using the Printer Driver. If you have checked [Reboot the PC now.], the computer will be shut down and restarted when you click [Finish].



13 Then remove the [RISO Printer Driver] DVD-ROM from the DVD-ROM drive of your computer.



► Keep the DVD-ROM at hand.

Printer driver installation is now completed.

USB Flash Drive Output

About USB Flash Drive

- Use USB Flash Drive compatible with Mass Storage Class. Depending on the type of USB Flash Drive, the Printer Driver may not work properly.
- Use a FAT-formatted USB Flash Drive.
- USB Flash Drives with security features are not supported.
- When connecting or removing USB Flash Drive, insert it or pull it out slowly by using the correct method.
- When USB Flash Drive data is damaged by natural disaster or contingency, the data saved in the USB Flash Drive cannot be guaranteed. It is recommended to back up important data with your computer with which the data has been created.

Installing the USB flash-via-Printer Driver

This section describes how to install the USB flash-via-Printer Driver when using a USB Flash Drive to print. (Regarding the procedure for manual installation, see [66](#).)



- ▶ You are required to have the administrator's privilege to install the Printer Driver program in your computer.
- ▶ This Printer Driver does not support server OS or printer sharing.

1

Insert the [RISO Printer Driver] DVD-ROM into your computer's DVD-ROM drive.

The installer is started. If the installer does not start up, double-click on the [Setup(.exe)] file in the folder below.

For a 32-bit OS:

(DVD-ROM):[Windows 32-bit] folder

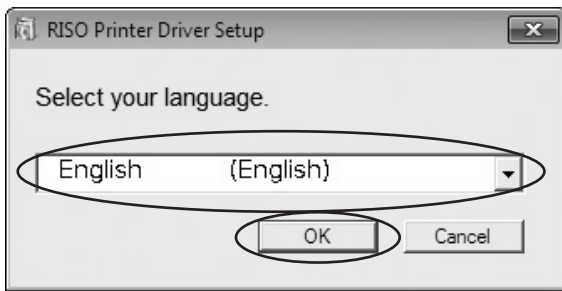
For a 64-bit OS:

(DVD-ROM):[Windows 64-bit] folder



- ▶ If the [User Account Control] dialog appears, click [Yes] or [Allow] (for Windows Vista).

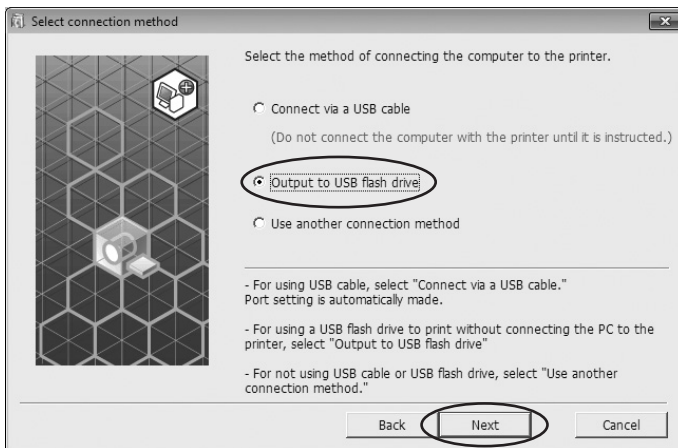
2 Select your language from the drop-down list, then click [OK].



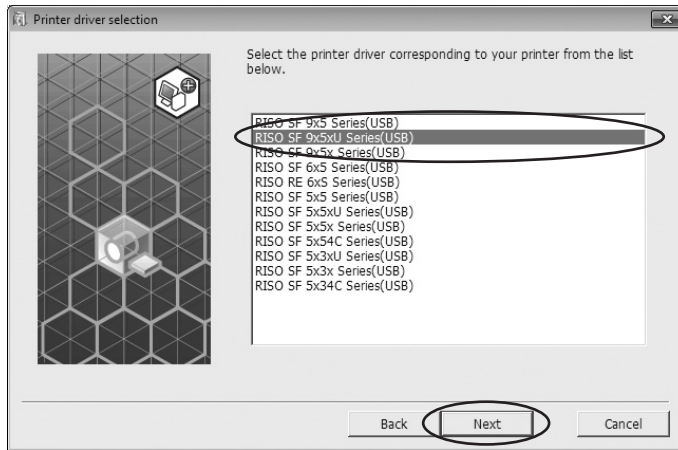
3 Click [Next].



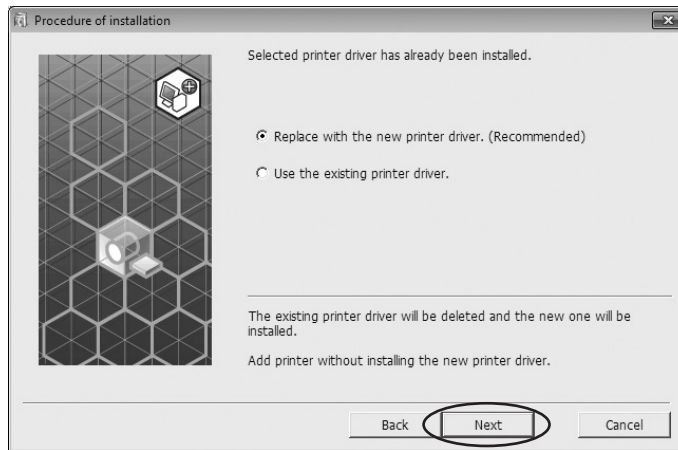
4 Select [Output to USB flash drive] and click [Next].



5 Select the printer name that has the part “USB” at the end and click [Next].



- ▶ When the selected Printer Driver is already installed, [Procedure of installation] dialog box appears, click [Next].

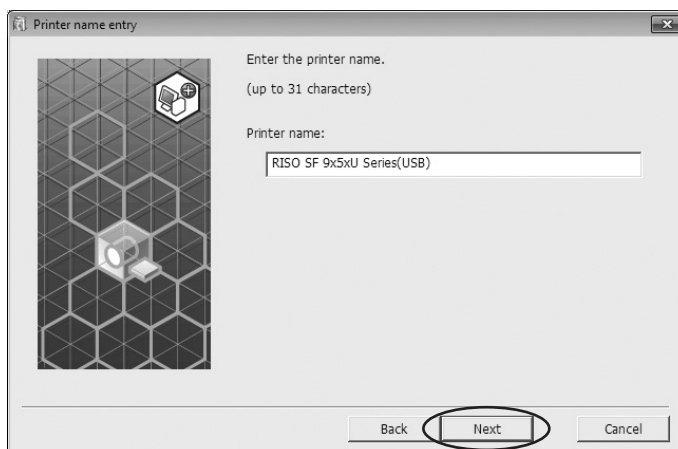


6 Click [Next].

You can also change the printer name.

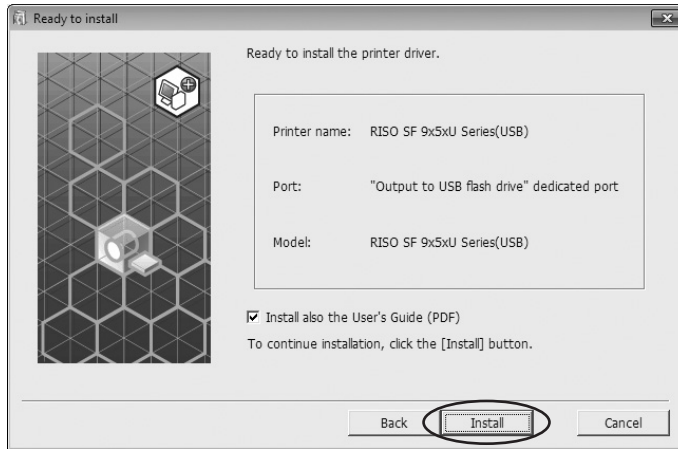


- ▶ When changing the printer's name, we recommend to leave (USB) in the name.



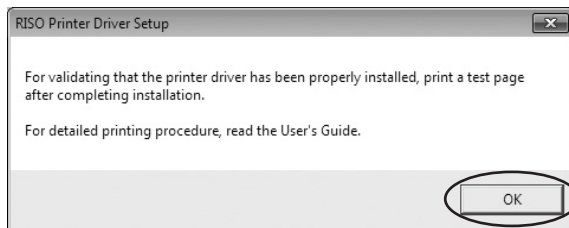
7 Click [Install].

When you place a checkmark in the [Install also the User's Guide (PDF)] checkbox, the User's Guide (PDF) will also be installed.



▶ When the [Windows Security] dialog appears, continue with the installation.

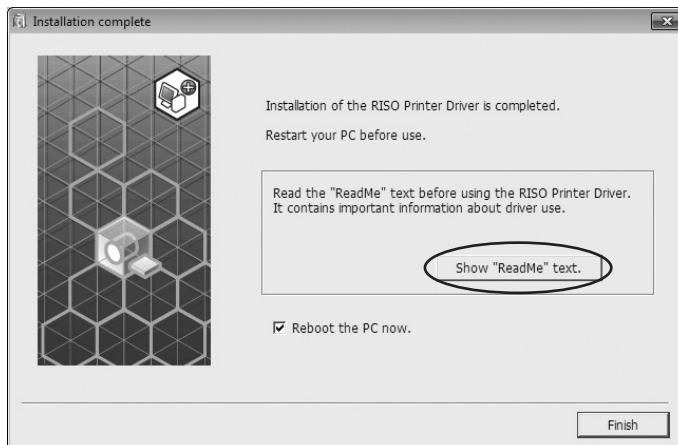
8 The following message appears, then click [OK].



▶ Please refer to "Create a Folder" and "Printing a test page" for output of test page on USB Flash Drive.

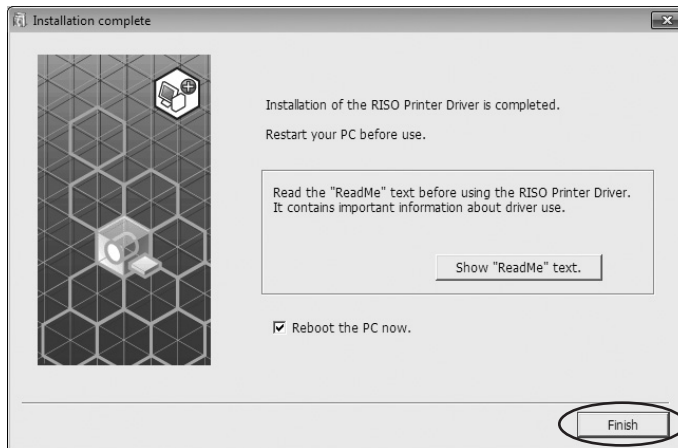
9 Click [Show "ReadMe" text].

The ReadMe file is opened. Be sure to read all the instructions and notes on it.



10 Click [Finish].

Be sure to restart the computer before using the Printer Driver. If you have checked [Reboot the PC now.], the computer will be shut down and restarted when you click [Finish].



11 Then remove the [RISO Printer Driver] DVD-ROM from the DVD-ROM drive of your computer.



► Keep the removed DVD-ROM at hand.

Printer driver installation is now completed.
Create a dedicated folder in USB Flash Drive continuously. (📖 28)

Create a Folder

The procedure of creating a dedicated folder in USB Flash Drive is described here.



▶ **When printing by using USB Flash Drive, be sure to create a dedicated folder in USB Flash Drive. Printing is disabled from the USB Flash Drive for which a dedicated folder has not been created.**



▶ Instead of the following procedure, you can create a dedicated folder by connecting USB Flash Drive to the printer.

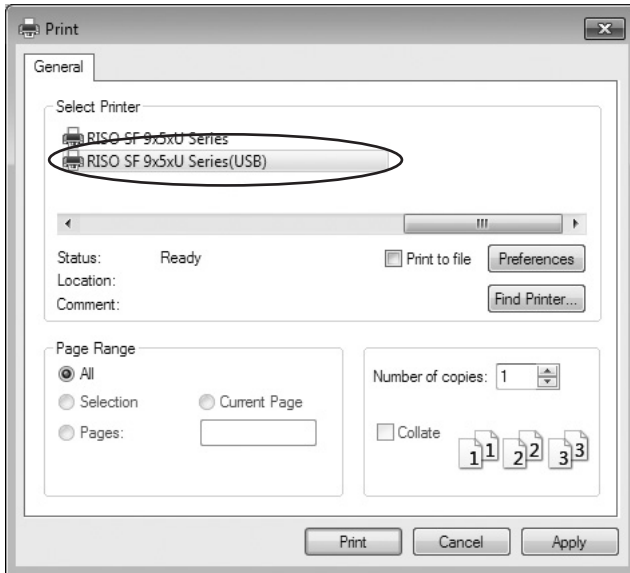
1 Connect the USB Flash Drive to the computer.

2 Display the [Print] dialog box.

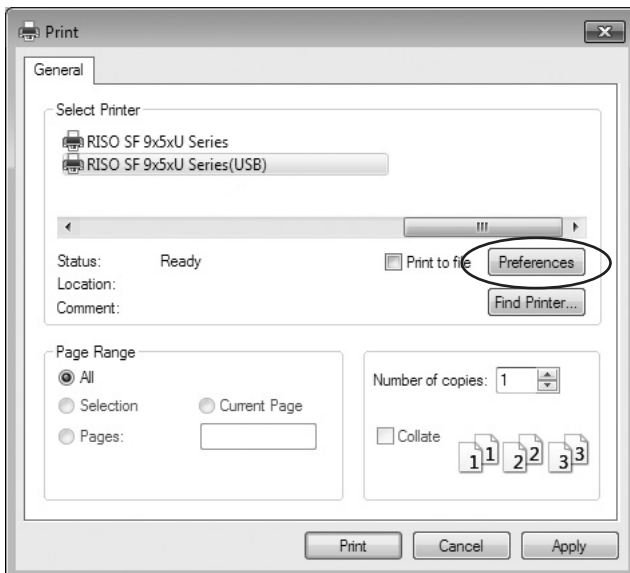
Open the original data to print on your computer, select [Print] from the [File] menu.

3 Select the printer to which the Printer Driver has been installed.

Be sure to select the USB flash-via-Printer Driver.



4 Display the printer's properties.

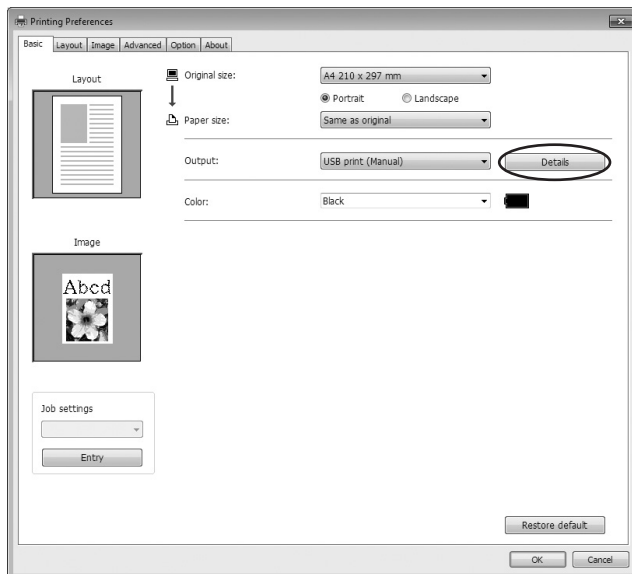


5 ■ For the SF5 Series

Click the [Layout] tab.

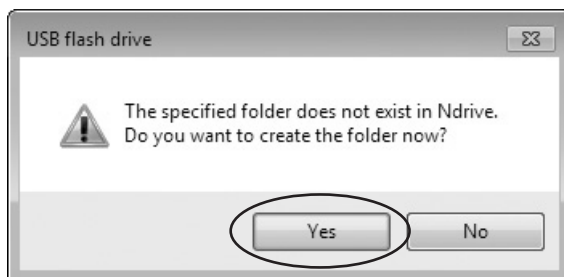
■ For the SF9 Series

Click [Details] in [Output].



6 When a message appears, click [Yes].

The dedicated folder is created in the USB Flash Drive.



7 Click [OK].



- ▶ The screen in step 7 is not displayed in the SF5 Series.
- ▶ For descriptions about each item, refer to [45](#).

Next, print a test page.



- ▶ **When changing the name of the folders in USB Flash Drive or moving the original data, use the RISO USB PRINT MANAGER. For details, see the “RISO Utility Software User’s Guide”**

Printing a test page

This section describes the procedures for printing a test page by using the USB flash-via-Printer Driver.



- ▶ **Use the USB Flash Drive for which a dedicated folder ([48](#)) has been created in advance.**

1 Open the print folder.

For Windows Vista:

Click on the [Start] icon-[Control Panel]-[Hardware and Sound]-[Printers] and open the [Printers] folder.

For Windows 7:

Click on the [Start] icon-[Control Panel]-[Hardware and Sound]-[Devices and Printers] and open the [Devices and Printers] folder.

For Windows 8.1:

Open the “Apps” screen and click [Control Panel]-[Hardware and Sound]-[Devices and Printers] and open the [Devices and Printers] folder.

For Windows 10:

Right-click on the [Start] icon and click [Control Panel]-[Hardware and Sound]-[Devices and Printers] and open the [Devices and Printers] folder.

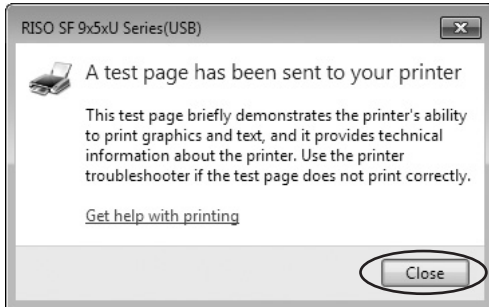
2 Open the properties of the printer to which the USB flash-via-Printer Driver has been installed.

Right-click on the icon of the printer (USB), and select [Printer Properties] or [Properties] (for Windows Vista) in the displayed menu.

3 Click [Print Test Page].

4 When a message appears, click [Close].

The data of the test page is saved in USB Flash Drive.



5 Remove the USB Flash Drive from the computer, and connect it to the printer.

■ For the SF5 Series

The printer starts receiving data from the USB Flash Drive.

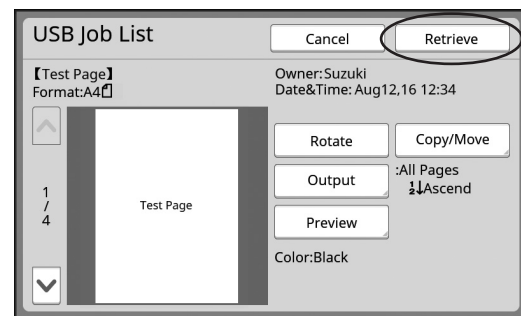
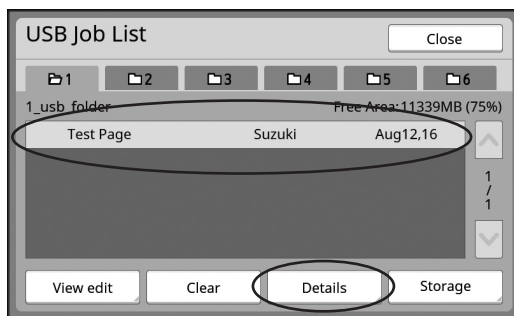
When the printer finishes receiving the data, it automatically starts printing.

Set A4/Letter paper in the printer beforehand.

After printing, the data in the USB Flash Drive is automatically deleted.

■ For the SF9 Series

- ① On the touch panel of the printer, touch [USB Job List].
- ② Select [Test Page] of [1_usb_folder], and touch [Details].
- ③ Touch [Retrieve].



- ④ Press the Start key.
Set A4/Letter paper in the printer beforehand.
A test page is printed.



Chapter 2

Working with the Printer Driver

Changing the Printer Driver Configuration	33
Sending and Printing Data	37
Setting the Print Conditions	41
▪ [Basic] Tab	42
▪ [Layout] Tab	47
▪ [Image] Tab	50
▪ [Advanced] Tab	53
▪ [Option] Tab	57
▪ [About] Tab	58
Creating a RISORINC-format file	59
▪ Adding a Local Port for RISORINC Files	59
▪ Selecting a Local Port for RISORINC Files	61
▪ Outputting RISORINC Files	62

Changing the Printer Driver Configuration

For customized use, register optional devices, frequently-used custom paper size, print color, and color information. If you do not change the Printer Driver configuration, you will not be able to select the corresponding option when specifying the print conditions of your print job.



► The screen shots of the Printer Driver shown here are taken from Printer Driver. (Not USB flash-via-Printer Driver)

1 Open the printer folder.

For Windows Vista:

Click on the [Start] icon-[Control Panel]-[Hardware and Sound]-[Printers] and open the [Printers] folder.

For Windows 7:

Click on the [Start] icon-[Control Panel]-[Hardware and Sound]-[Devices and Printers] and open the [Devices and Printers] folder.

For Windows 8.1:

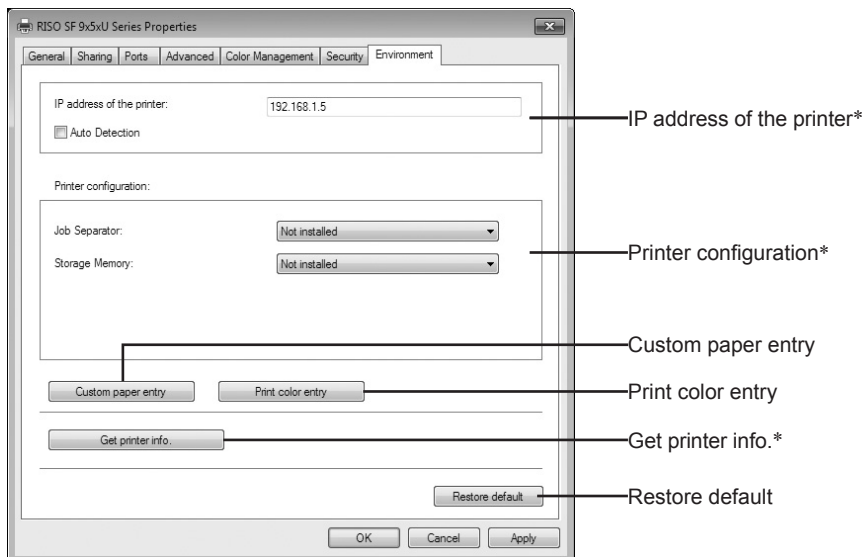
Open the “Apps” screen and click [Control Panel]-[Hardware and Sound]-[Devices and Printers] and open the [Devices and Printers] folder.

For Windows 10:

Right-click on the [Start] icon and click [Control Panel]-[Hardware and Sound]-[Devices and Printers] and open the [Devices and Printers] folder.

2 Open the [Environment] tab of the [Properties] dialog box.

Click the right-hand mouse key on the corresponding RISO printer icon in the printer folder and select [Printer properties] or [Properties] (for Windows Vista) or in the displayed menu. Then click [Environment] in the [Properties] dialog box.



* [IP address of the printer], [Storage Memory] under [Printer configuration] and [Get printer info.] do not appear in the USB flash-via-Printer Driver.

3 Register the options if needed.

■ Registering the IP address (Only in the case of network connection)

Make settings for acquiring the printer information (ink colors and optional devices).

IP Address of the printer

Enter the IP address of your RISO printer which is connected.

Auto Detection

Check box selected : Detection of the color information of the print color mounted on the printer is made every time you open the printer's properties to reflect the information on the [Color] for the Printer Driver.

For printing process without opening the printer's properties, detection of color information is made prior to printing process, and the data is output with the print color mounted on the printer by temporarily reflecting the printer drive settings.

Check box not selected : Color information is updated only when you click [Refresh] of the [Image] tab.

■ Registering optional devices

Select [Installed] when the optional devices are connected.

Job Separator

Select [Installed] if your RISO printer is equipped with the Job Separator.

Storage Memory* (USB flash-via-Printer Driver is not available)

Select [Installed] if your RISO printer is equipped with the Document Storage Card.

* Not displayed in the SF5 Series.

■ Registering Custom Paper Size as Standard

You can register custom paper sizes as standard in the [Custom paper entry] dialog box, which can be opened by clicking [Custom paper entry] in the [Environment] tab of the [Properties] dialog box. The custom paper sizes can be named and displayed in the [Original size] of the [Basic] tab.

1) Click [Custom paper entry] to display the [Custom paper entry] dialog box.

2) Enter the width, length and name and click [Add].

The registered name appears in the dialog box.



- ▶ The length of the name can be up to 30 characters.
- ▶ You can change the unit of length from "mm" to "inch".

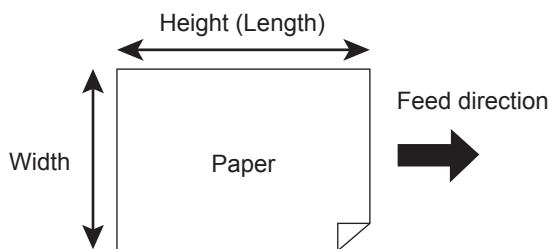
Custom paper entry

Width: 8.50 inch [0.39 - 13.39]

Length: 11.00 inch [0.39 - 17.32]

Name: 8.5 x 11 inch

C4 229 x 324 mm
 C5 162 x 229 mm
 C5-R 229 x 162 mm
 C6 114 x 162 mm
 DL-R 110 x 220 mm
 Executive 190 x 254 mm
 Executive-R 254 x 190 mm
 Envelope 9 x 12 inch
 Envelope 10 x 13 inch
 No.10 envelope 4.13 x 9.5 inch
 8K 271 x 390 mm
 16K 195 x 271 mm
 16K-R 271 x 195 mm



3) Click [Close] in the [Custom paper entry] dialog box.



- ▶ Even if you use the paper that are registered in the Custom paper entry, it may not pass through the machine depending on such factors as the paper quality, ambient conditions and storage conditions.



- ▶ You can save the information of your customer paper size as a Custom paper entry information file (.udp extension) by clicking [Export]. If you want to register the custom paper size from the Custom Paper Entry information file, click [Import] to select the file.
- ▶ When registering the paper using with horizontal direction, enter the size of long edge in [Width] and enter the size of short edge in [Length].
- ▶ Entry of the name and dimensions will help you when you select the paper size. The length of the name can be up to 30 characters.
- ▶ The registrable paper size varies with the printer you use. For details, see the user's guide of your printer.
- ▶ When deleting a custom paper size, select the corresponding name from the list and click [Clear].

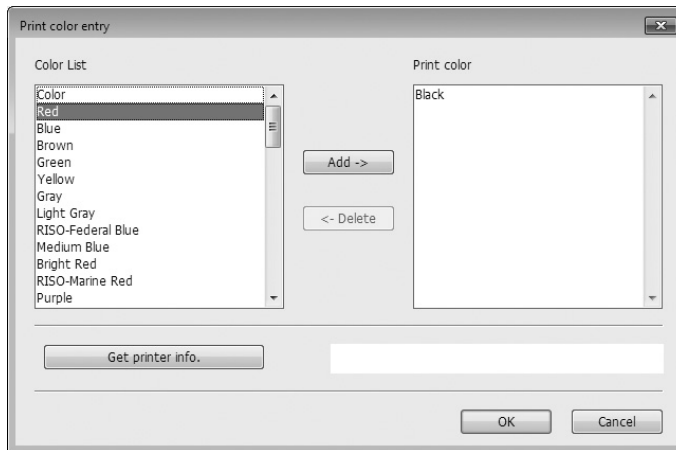
■ Register the Print Colors

Register the all print colors which your RISO printer can provide.

The print colors registered are displayed in the [Color] drop-down list in the [Basic] tab (42).

1) Click [Print color entry] to open the [Print color entry] dialog box.

2) Select the colors you have on your RISO printer from the [Color List] in the [Print color entry] dialog box, and click [Add].



3) Click [OK].



▶ Clicking [Get printer info.] when the IP address has been set acquires the ink color and adds it to the list. (Only in the case of a network connection)

■ Acquiring information from the printer (Only in the case of network connection)

Clicking [Get printer info.] when the printer IP address has been registered acquires the printer information (ink colors and optional devices) and reflects it in the settings.

■ Changing the settings back to their defaults

Change the settings under the [Environment] tab back to normal.

4 Complete the setting.

Click [OK] on the [Environment] tab.

Sending and Printing Data

Follow the procedures given below to print out document data directly on your RISO printer.

If the corresponding RISO Printer Driver has not been installed in your computer yet, install it first, referring to the section “Installing the Printer Driver” (7).



- ▶ The maximum print area is different depending on the model of RISO printer. If you want to know the maximum print area of your document, consult the user’s guide of your RISO printer.
- ▶ For other limitations, also read the user’s guide of your RISO printer.

1

Turn on your RISO printer and load paper.

Load the proper paper to be printed.

2

Specify the print job in the [Print] dialog box.

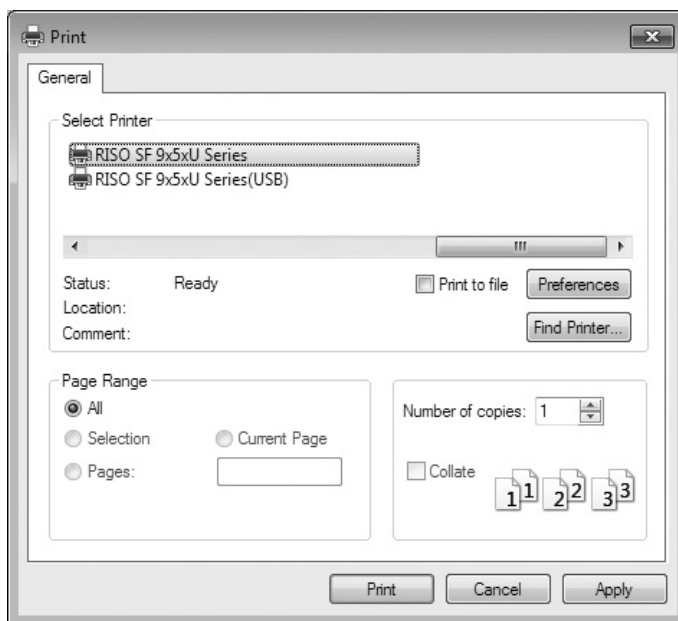
Turn on your computer and start Windows.

Open the document file to be printed, select [Print] in the [File] menu to open the [Print] dialog box.

3

Select a Printer Driver.

Select a Printer Driver that supports your printer from the [Select Printer] list.

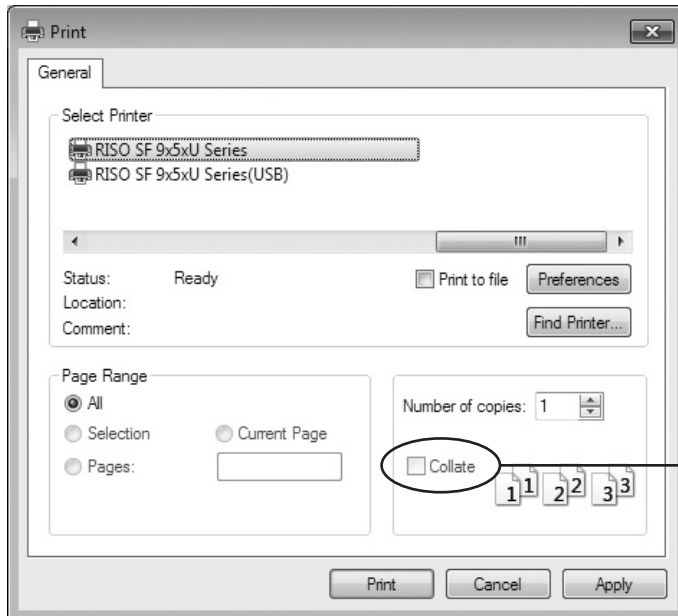


To print from a USB Flash Drive, select [Printer Name (USB)] and connect the USB Flash Drive to your computer.

4 Check print conditions.

- Specify the number of copies to be printed within the following range : 1 to 9,999.
- Never fail to deselect the [Collate] box. If it is selected, the master-making operation will be repeated for every copy.

The displayed items in the [Print] dialog box vary depending on the application software.



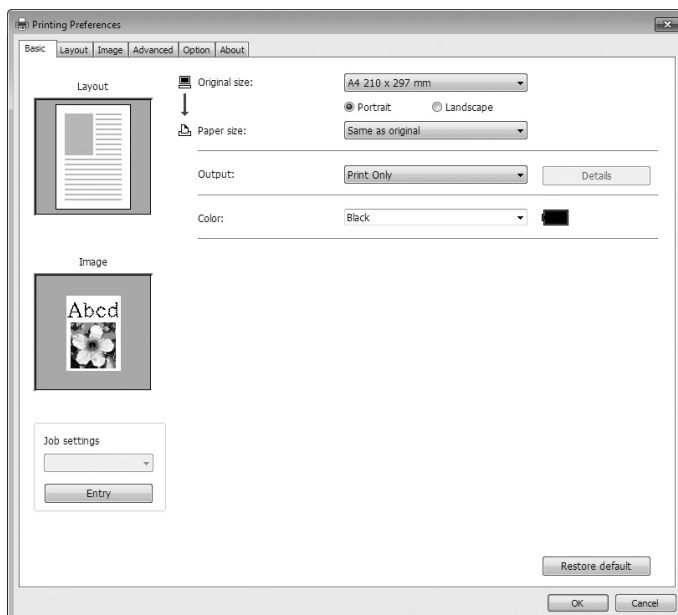
Remove the check mark for [Collate].

- ! ▶ If you want to print a file consisting of several pages, and the file include different paper sizes or page directions, printing may fail when you choose [All] for the paper range. Specify page numbers to print for those of same page size or direction.

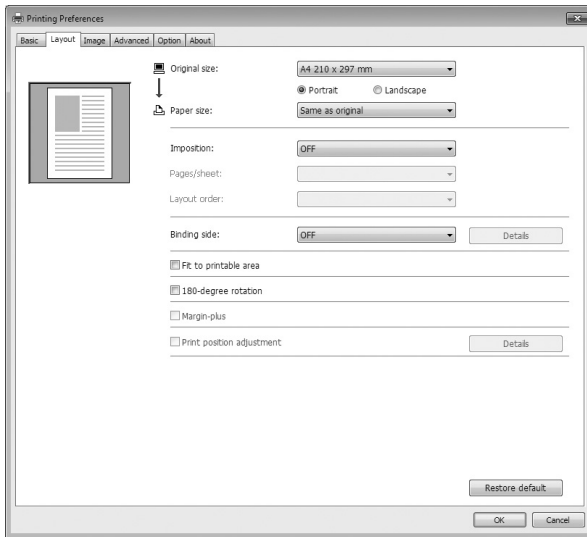
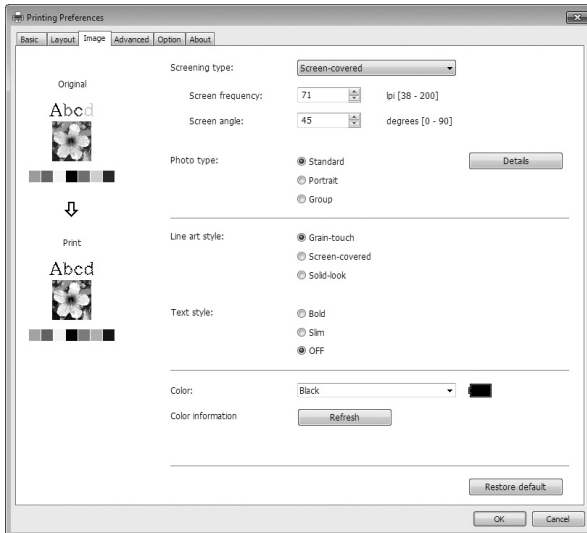
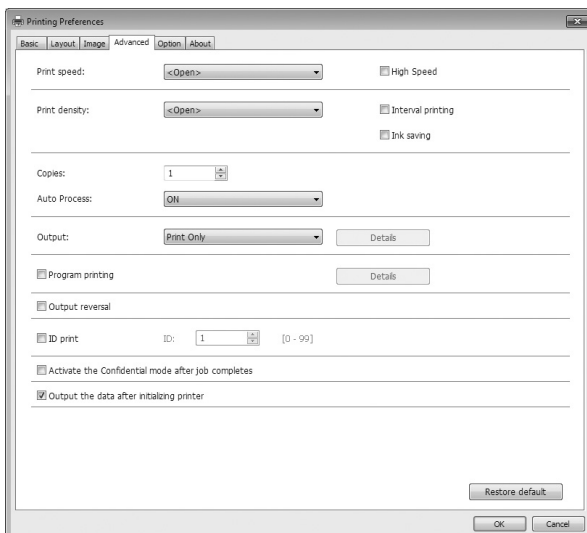
If you want to set additional print conditions for the current print job ;
Open the [Properties] dialog box by clicking [Properties] in the [Print] dialog box.

- ! ▶ Some printer settings are not available depending on access privileges.

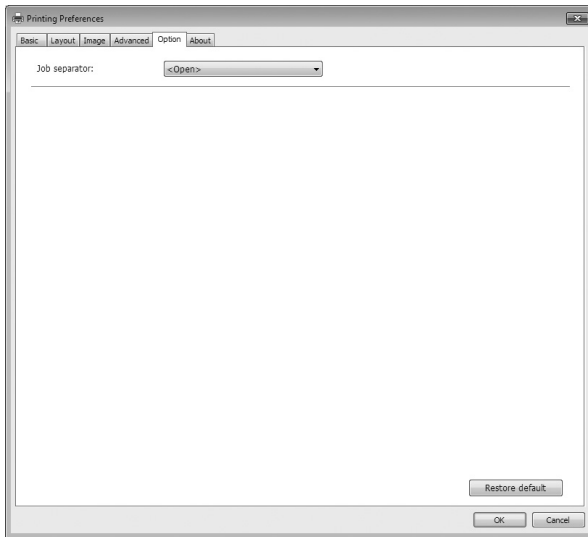
[Basic] Tab (refer to 42 for detailed settings)



- ! ▶ Settings of paper size and page direction for this tab should be identical with those in the application software to be used.

[Layout] Tab (refer to [47](#) for detailed settings)**[Image] Tab** (refer to [50](#) for detailed settings)**[Advanced] Tab** (refer to [53](#) for detailed settings)

[Option] Tab (refer to [57](#) for detailed settings)



5 Start printing.

Click [OK] in the [Print] dialog box.

The selected document file data is then transmitted to your RISO printer and printed out there as specified in the previous step.

When using a USB Flash Drive, data is output to the USB Flash Drive. Disconnect the USB Flash Drive from the computer, connect it to the printer and print the data. For printing procedures, see the User's Guide of your RISO printer.

Setting the Print Conditions

You can set various print conditions over the tabs in the [Properties] dialog box. To open this dialog box, click [Properties] in the [Print] dialog box.



► Some Printer Driver settings are disabled by the settings.

Printer Driver Settings		Printer Driver		USB flash-via-Printer Driver	
		Print Only	Storage Only ¹	USB print (Manual) ¹	USB print (Auto process)
[Advanced] Tab	Copies	Enable	Disable	Disable	Enable
	Auto-process	Enable	Disable	Disable	Enable
[Layout] Tab	180-degree rotation	Enable	Disable	Disable	Enable
[Advanced] Tab	Print speed	Enable	Disable	Disable	Enable
	Print density	Enable	Disable	Disable	Enable
	High Speed ²	Enable	Disable	Disable	Enable
	Ink saving	Enable	Enable	Enable	Enable
	Interval printing ¹	Enable	Disable	Disable	Enable
	Program printing ¹	Enable	Disable	Disable	Enable
	ID print ¹	Enable	Enable	Enable	Disable
	Activate the Confidential mode after job completes	Enable	Disable	Disable	Enable
Output the data after initializing printer	Enable	Disable	Disable	Enable	
[Option] Tab	Job separator	Enable	Disable	Disable	Enable

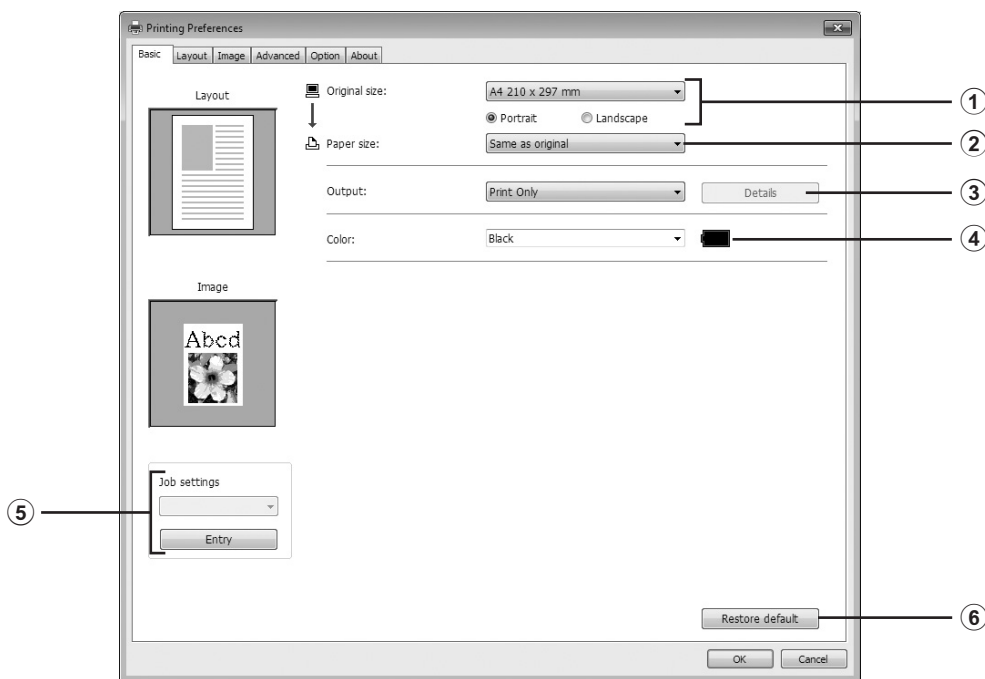
Enable : Printer Driver's setting is active.

Disable : Printer Driver's setting is disabled (or cannot be set.) Set with printer's control panel when printing.

¹ Not displayed in the SF5 Series.

² Not displayed in the SF5x3 Series.

[Basic] Tab



- ① Original size
- ② Paper size
- ③ Output*
- ④ Color
- ⑤ Job settings
- ⑥ Restore default

* Not displayed in the SF5 Series.

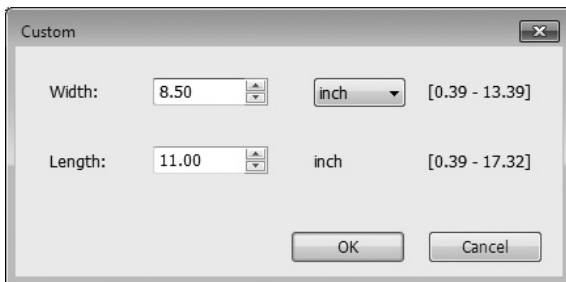
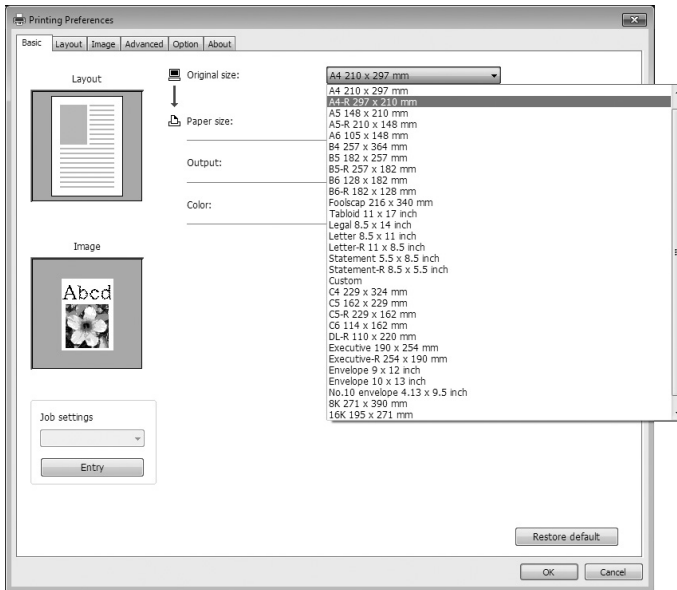
① Original size

Setting the original size and paper direction.



- ▶ Be sure to specify the same page direction which was set in the application software used when creating the document data.
When paper is fed with the long edge first, select the paper size whose name contains the word “-R”.

When using any other custom-size paper than the displayed one, select [Custom] and enter its width and length in the boxes.



- ▶ You can select custom-size paper from the drop-down list by registering it beforehand. (📖 34)
- ▶ The range of paper sizes that can be entered in the [Custom] dialog box depends on your RISO printer. For details, see the User's Guide of your RISO printer.
- ▶ You can select the unit of size from [mm] and [inch].

[Portrait] [Landscape]

This option is used for matching the page direction with the feed direction. Specify the page direction.



- ▶ **Be sure to specify the same page direction** which was set in the application software used when creating the document data.

② Paper size

Select the paper size for printing.

If you do not use scaling, select [Same as original].

If you select a paper size that is different from the original text, the image will be scaled to fit the selected paper size.



- ▶ If you select [Print position adjustment] (📖 49), scaling will not be done.

③ Output

- Not displayed in the SF5 Series.

■ This item appears when [Storage Memory] on the [Environment] tab is set to “Installed”.

Print Only

Send the data to your RISO printer, and start printing in the [Auto-process].

Print & Storage

The print job is processed and the data is stored in the printer. You can reactivate the stored data on your RISO printer at anytime you like.

Storage Only

Send the data to your RISO printer to be stored. You can reactivate the stored data on your RISO printer at anytime you like.

For the USB flash-via-Printer Driver

USB print (Manual)

Data is output to the USB Flash Drive. You can specify a folder for storing the data in the USB Flash Drive. (45)

USB print (Auto process)

Data is sent to the USB Flash Drive. It is printed according to the [Auto-process] setting. After a master-making, the data in the USB Flash Drive is automatically deleted.

(A folder for storing the data in the USB Flash Drive cannot be selected. Data is stored in the [Auto process] folder.)

[Details]

Set additional information necessary for storing data and output of USB Flash Drive. The information below will be stored together with the document data. Such information can be used to identify the data.

– For the Printer Driver

Selecting [Print & Storage] or [Storage Only] for [Output] enables you to click [Details]. Click [Details] to open the [Storage Tag] dialog box.

Storage tag

Use an original file name

Job name:

Owner name:

Folder:

Display a message before deleting data

OK Cancel

– For the USB flash-via-Printer Driver

Clicking [Details] opens the [USB print tag] dialog.



Use an original file name:

Select the check box to automatically use an original file name for identification on the application software on which the document was created.

Job name:

Enter ID name if you want to have any name different from one specified on the application software on which the document was created.

Owner name:

Input the name of the administrator of the data to be stored or output to the USB Flash Drive. The default is the name of the user logged into the computer.

Folder:

Select a folder (1-6) to use for storing or printing from the USB Flash Drive.

Drive (Only for USB flash-via-Printer Driver):

Select the drive that the USB Flash Drive is connected to. The drive detected as the USB Flash Drive appears in the drop-down list.

Display a message before deleting data:

Select the check box to display a confirmation message on the control panel of your RISO printer before deleting stored data.



- ▶ You are not allowed to use the prohibited characters as follows for [Job name] and [Owner name].

Prohibited characters : \ / ; , * ? " < > |



- ▶ With the Printer Driver for USB Flash Drive, when [USB print (Auto process)] is selected for [Output] (44), the data is automatically deleted after printing is finished.

4 Color

After [Color information] ([Image] tab) is refreshed and the information on ink colors is obtained, ink colors are automatically selected from the ink colors mounted on the printer and the selected ink color is indicated in blue. If the information cannot be obtained, manually select the print colors mounted on the printer.

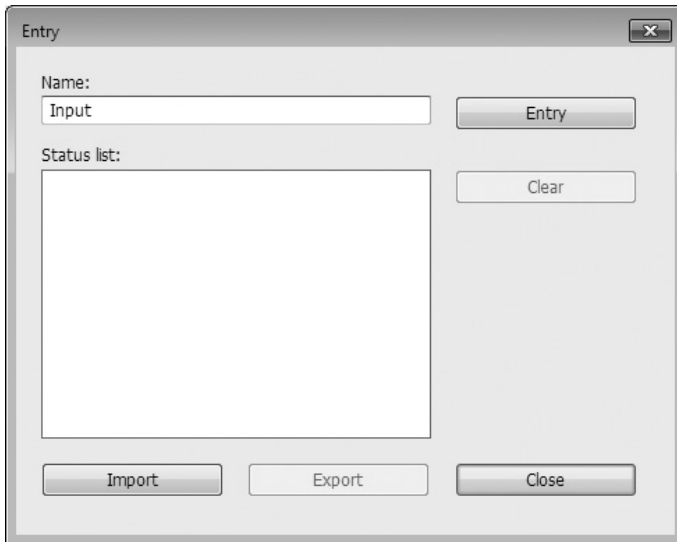
5 Job settings

You can name and register the printer settings you often use.
The registered printer settings can be called up.



► To register/delete the printer settings, you are required to have administrator's privileges to log in to Windows.

- 1) Make the printer settings in the [Property] dialog box.
- 2) Clicking [Entry] displays the [Entry] dialog box.
- 3) The name registered appears in the [Status list:] by entering the name in the column under [Name:] and clicking [Entry].



- 4) Click [Close].



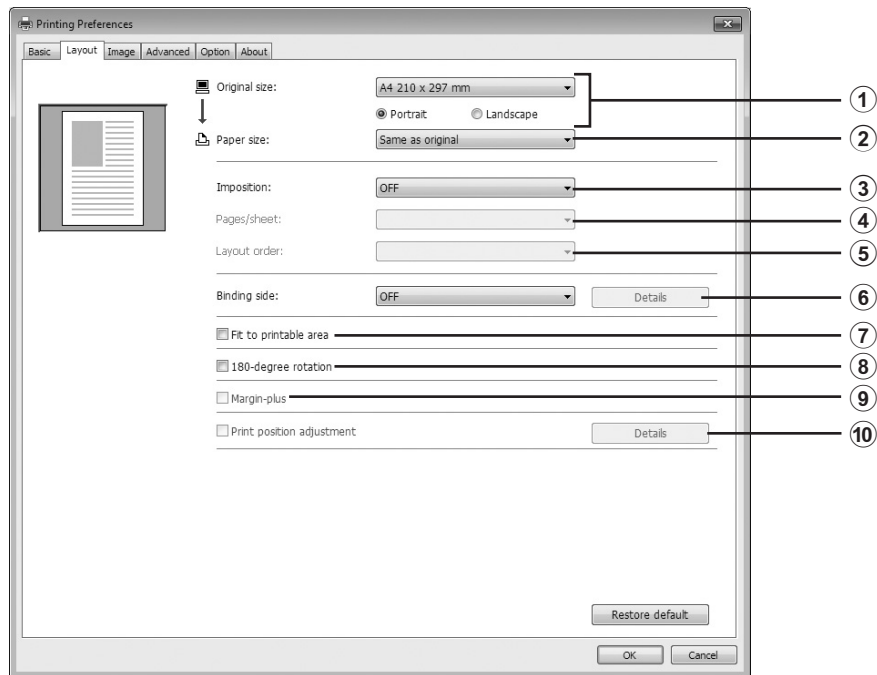
- The registered printer settings can be saved as a printer settings entry file by clicking [Export].
- To register the printer settings from the printer settings entry file, click [Import] and specify the file.
- To delete the registered printer settings, select the name to be deleted and click [Clear].

6 Restore default

Clicking [Restore default] changes the settings in the [Property] dialog box back to their defaults.



- This is also displayed on the [Layout], [Image], [Advanced] and [Option] tabs.

[Layout] Tab

- | | |
|------------------|-----------------------------|
| ① Original size* | ⑥ Binding side |
| ② Paper size* | ⑦ Fit to printable area |
| ③ Imposition | ⑧ 180-degree rotation |
| ④ Pages/sheet | ⑨ Margin-plus |
| ⑤ Layout order | ⑩ Print position adjustment |

* The settings are made depending on the settings in the [Basic] tab. (📖 42)

① Original size

[Basic] Tab - [Original size] (📖 42)

② Paper size

[Basic] Tab - [Paper size] (📖 43)

③ Imposition

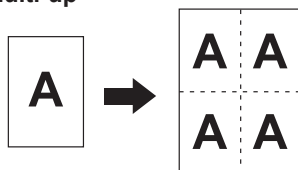
You can impose multiple originals on one page and print them.

OFF : Nomal printing (one page original par sheet).

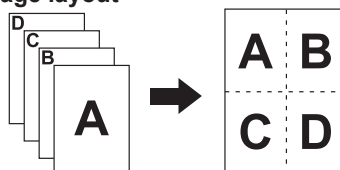
Multi-up : The same original is imposed multiple times on one sheet of paper.

Page layout : Different original pages are imposed on one sheet of paper.

Multi-up



Page layout



④ **Pages/sheet**

When [Multi-up] or [Page layout] is selected, select the number of pages.

2 pages : Imposes 2 original pages on a sheet.

4 pages : Imposes 4 original pages on a sheet.

⑤ **Layout order**

When [Page layout] is selected, select the imposition order and opening direction.

Page layout (2 pages)

Left to right (Top to bottom) : Original pages are imposed from left to right or from top to bottom.

Right to left (Bottom to top) : Original pages are imposed from right to left or from bottom to top.

Page layout (4 pages)

Left top to right : Original pages are imposed from left top to right.

Left top to bottom : Original pages are imposed from left top to bottom.

Right top to left : Original pages are imposed from right top to left.

Right top to bottom : Original pages are imposed from right top to bottom.

⑥ **Binding side**

Setting the binding margin.

OFF : A binding margin is not set.

Left : The binding margin is set on the left side of the sheet of paper.

Right : The binding margin is set on the right side of the sheet of paper.

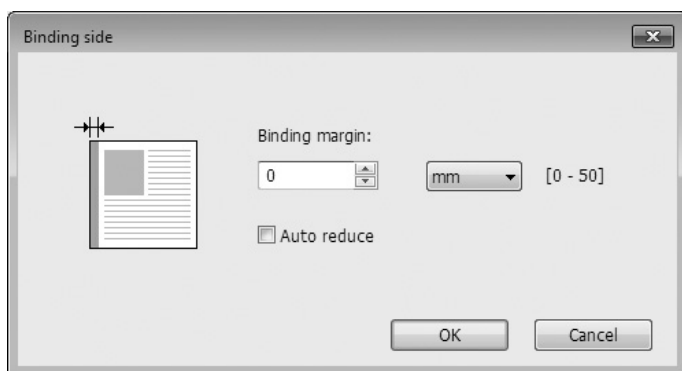
Top : The binding margin is set on the top of the sheet of paper.

Bottom : The binding margin is set on the bottom of the sheet of paper.

Details : Clicking [Details] opens the [Binding side] dialog box.

Set the binding margin and the unit.

When a checkmark is placed in the [Auto reduce] checkbox, the page size is automatically reduced if the original page size is not within the print paper.



⑦ Fit to printable area

If the original page does not have enough margin for printing, it is normally printed as it is without page size reduction. If the original page has a smaller margin, the part that exceeds the effective print range is not printed out. In such case, if you place a checkmark here, the whole page is printed out by adding a margin (changing the reduction rate) and preventing the edge of the paper from being removed.



- ▶ This option is not available when [Margin-plus] is selected.

⑧ 180-degree rotation

You can rotate print images by 180 degrees by activating this option.



- ▶ You can set 180-degree rotation from your printer. If you set it both from your printer driver and printer, the print images do not rotate by 180 degrees.

⑨ Margin-plus

If you select this check box, printing will be done in a 95% scaling.



- ▶ If [Fit to printable area] is not selected, this option is not available.
- ▶ If [Print position adjustment] is selected, this option is not available.

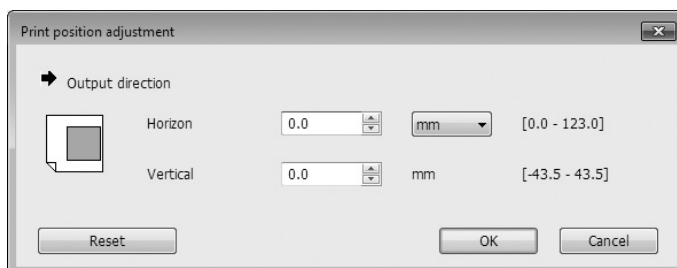
⑩ Print position adjustment

When you print the original on a sheet of paper that is larger than the original, this option adjusts the printed position without changing the printed original size.

Placing a checkmark and clicking [Details] opens the [Print position adjustment] dialog box. Set the position and the unit.

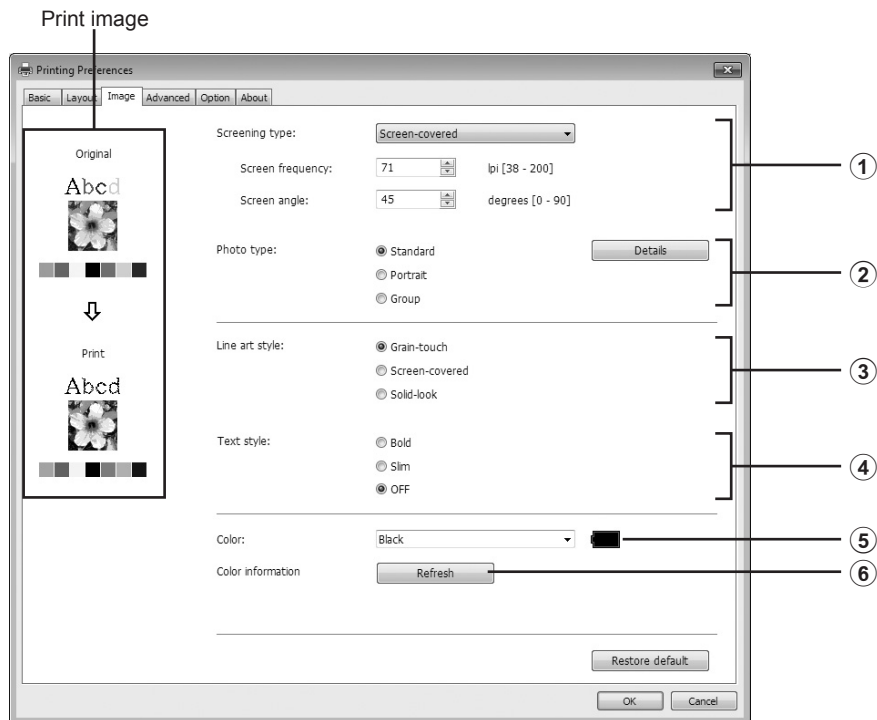
The settable range varies depending on the original size and the print paper size.

Reset : Clicking [Reset] returns to the original position.



- ▶ If [Margin-plus] is selected, this option is not available.
- ▶ If you set [Imposition] to other than OFF, this option is not available.
- ▶ You can select the unit of size from [mm] and [inch].

[Image] Tab



- | | |
|---|---|
| <p>① Screening type
 Grain-touch
 Screen-covered
 Screen frequency
 Screen angle</p> | <p>③ Line art style
 Grain-touch
 Screen-covered
 Solid-look</p> |
| <p>② Photo type
 Standard
 Portrait
 Group</p> | <p>④ Text style
 Bold
 Slim
 OFF</p> |
| | <p>⑤ Color*</p> |
| | <p>⑥ Color information</p> |

* The settings are made depending on the settings in the [Basic] tab. (42)

① Screening type

You can select either of the following two styles in printing out photo images in your document data. The print result of the selected style of photo images is seen on the left side of the screen.

Grain-touch:

Various tones of photo images are reproduced by changing the number of dots in an area according to original density. The printed-out photo images will have grain-touch appearance.

Screen-covered:

Various tones of photo images are reproduced by changing the size of dots according to original density. The printed-out photo images will be covered with a dot screen.

Though the wide range of tone levels in original photo images can be kept in this style, their fineness will be lowered. When you select [Screen-covered], you can set the screen-covered parameter.

Screen frequency

You can select the frequency of dots per inch (25.4 mm). You can select the value from 38 to 200. The default value is 71.

Screen angle

You can select the angle of dot direction so as to make adjustments against moire or other problems. You can select the value from 0 to 90. The default value is 45.

② Photo type

Select the type of photo and set image finishing.

Standard

Clicking [Details] enables settings to be made for brightness and contrast.

Clicking [Details] opens the [Photo adjustment] dialog box.

Portrait

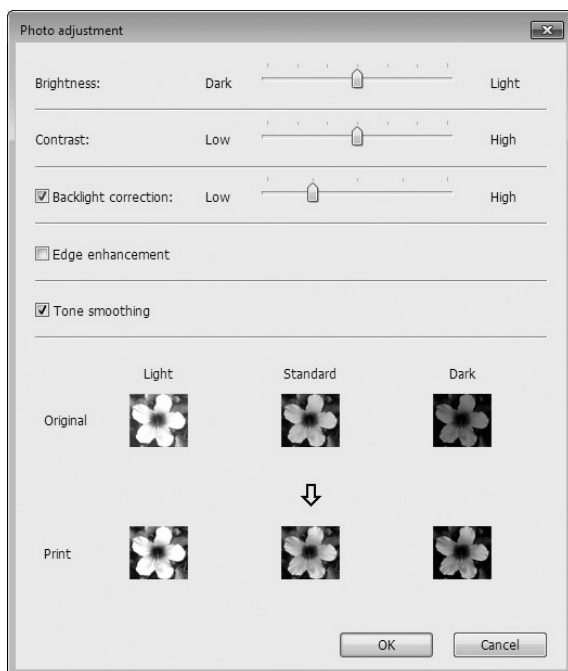
Use this setting for pictures of one or two individuals from the bust up. This type of image processing is particularly good for printing photos of faces.

Group

This setting is for group photos that are over-exposed. This process is effective for restoring facial features that have become washed out by a flash.



- ▶ When either [Portrait] or [Group] is selected, the "Photo adjustment" settings made for [Standard] are returned to their defaults.

Photo adjustment

Brightness : The brightness of photo images can be adjusted to 7 levels.

Contrast : The contrast of the overall image can be adjusted to 7 levels.

Backlight correction : When a check mark is placed in the check box, back light correction is applied to the image to make it sharper.

Edge enhancement : When a check mark is placed in the check box, edge enhancement is applied to the image to accent contours.

Tone smoothing : This setting is available when [Screen-covered] is selected for [Screening type]. When a check mark is placed in the check box, the tonal expressions used in screen-covered processing are smooth.

③ Line art style

Specifies the expression method of the line (text).

Grain-touch : This mode displays the color gradation. The bright color is printed out in light tone and the dark color is printed out in deep tone.

Screen-covered : The text sections are displayed with halftone dots. This mode is unsuitable for small sized text.

Solid-look : This mode makes all text solid-look. You can use this mode to express the text clearly. The difference of each text color cannot be expressed.

④ Text style

You can adjust the thickness of text in this mode.

Bold : makes the text thicker and print out (to prevent patchiness).

Slim : makes the text slimmer and print out (to prevent crushed lines).

OFF : doesn't adjust the text volume.

⑤ Color

[Basic] Tab - [Color] (📖 45)

⑥ Color information

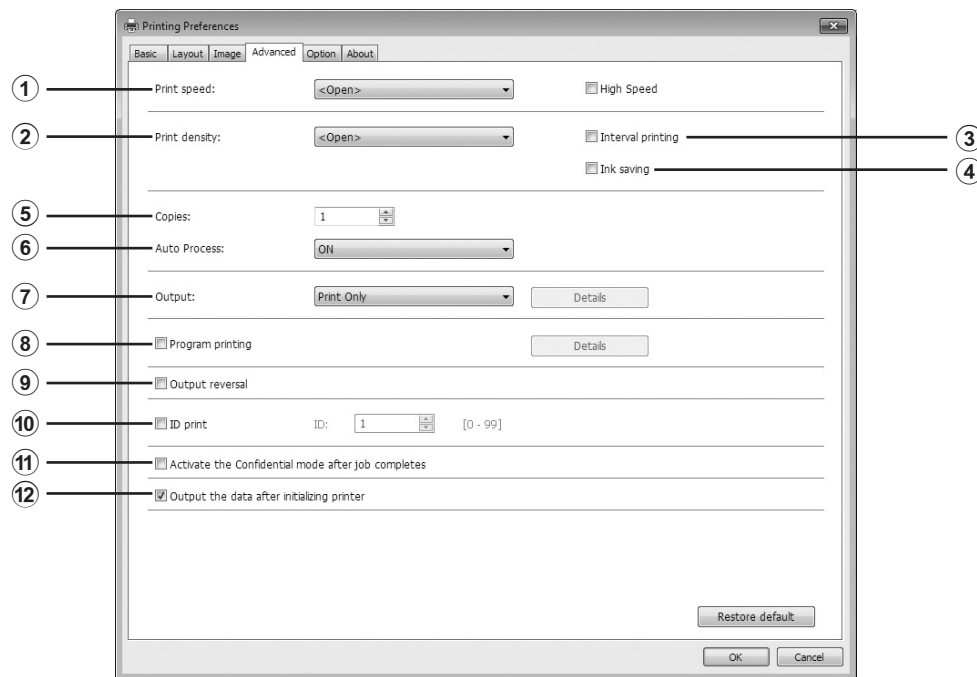
[IP address of the printer] on the [Environment] tab (📖 33) must be set.

By clicking on the [Refresh] button the color information of the Drums mounted in your RISO printer will be reflected in the RISO Printer Driver. The acquisition status (Complete/Error) of color information is displayed. In case of "Complete", the letters in the Ink Color of the printer driver will be indicated in blue.



- ▶ Print image: According to the settings of each [Photo type], [Line art style] and [Text style], the image of the documentation data and print will be displayed.
The actual documentation data and prints are different from the displayed images.

[Advanced] Tab



- | | |
|---|---|
| ① Print speed
High Speed ¹ | ⑦ Output ^{2,3} |
| ② Print density | ⑧ Program printing ² |
| ③ Interval printing ² | ⑨ Output reversal |
| ④ Ink saving | ⑩ ID print ²
ID |
| ⑤ Copies | ⑪ Activate the Confidential mode after job completes |
| ⑥ Auto Process | ⑫ Output the data after initializing printer |

¹ Not displayed in the SF5x3 Series.

² Not displayed in the SF5 Series.

³ The settings are made depending on the settings in the [Basic] tab. (42)

① Print speed

Selects the print speed of the printer from 5 levels.
If it remains [Open], the original is printed at the speed set on the printer side.

High Speed

- Not displayed in the SF5x3 Series.
Print at high speed (150ppm).

② Print density

Selects the print density of the printer from 5 levels.
If it remains [Open], the original is printed at the density set on the printer.

③ Interval printing

- Not displayed in the SF5 Series.
By allowing the printer to skip a paper feeding during printing, the ink has time to dry, preventing it from leaving marks on the back of the next sheet.

④ Ink saving

The ink saving function of the printer is activated when this check box is selected. The volume of ink used for printing will be reduced compared with normal operation.



- ▶ In case of selecting [Ink saving], the printing image might be lighter or erased depending on darkness of the original image.

⑤ Copies

You can use this field to specify the number of copies if no field is prepared for print quantity entry in your application software. When the number of copies can be specified in the [Print] dialog box of the application software, on the other hand, you can ignore this setting because it has no effect on printing operation.

⑥ Auto Process

You can specify how to process your print jobs on your RISO printer, i.e. to complete them without interruption or to interrupt them after a specified process step. By interrupting your print jobs, you can check print position and quality with test prints before printing process or change the print job flow according to your print requirements. The available process flows are as follows.

ON:

To complete print jobs without operator involvement on your RISO printer. No pause is made between master-making and printing processes until the end of print jobs.

Pause before “Master-making”:

To interrupt print jobs before each master-making process, thus allowing you to handle a stack of printed copies.

Pause before “Print”:

To interrupt print jobs before each printing process, thus allowing you to check a sample print.

OFF:

To interrupt print jobs before each process step, i.e. both master-making and printing processes.



- ▶ For the SF9 Series Printer Driver, [Auto-process] is available only when you select [Print Only]. (44) (The setting is not valid for [Storage Only].) For stored data, set the [Auto-process] mode from the printer display when the data is retrieved.
- ▶ For the SF9 Series USB flash-via-Printer Driver, master-making/printing is executed according to the [Auto-process] setting made here when [Output] (44) is set to [USB print (Auto process)]. For that reason, when [Pause before “Master-making”] or [OFF] is selected, master-making does not start automatically.

⑦ Output

[Basic] Tab - [Output] (44)

⑧ Program printing

- Not displayed in the SF5 Series.

Printing jobs are conducted in sets of copies. One set should contain at least one page. By selecting program printing, you can click [Details]. Click [Details] to open [Program printing] dialog box.

Group	Copies	Cps. x	Sets
1	1	Cps. x	1
2	0	Cps. x	1
3	0	Cps. x	1
4	0	Cps. x	1
5	0	Cps. x	1
6	0	Cps. x	1

Job separation

Tape OFF

OK Cancel

Copies : Enter the value for number of pages per set to be printed.

Sets : Enter the value for number of sets to be printed.

Reset : Returns Copies and Sets to their defaults.

Job separation

Tape : Tape is inserted into each group.

OFF : No job separation is performed.

To use the job separator mode, the optional job separator is required.

⑨ Output reversal

Placing a checkmark here outputs copies in reverse order.

⑩ ID print

- Not displayed in the SF5 Series.

The data will be output as “ID print” when this check box is selected. For ID print, the input of PIN code is required when printing the data from the printer. Use this setting to print documents you do not want others to read, such as confidential documents.

Though the job is sent to the printer, the master or prints are not made until authorization is input from the printer’s control panel.



- ▶ With the Printer Driver for USB Flash Drive, placing a check mark in the [USB print] check box automatically sets [USB print (Manual)] for [Output] (44). [USB print (Auto process)] cannot be selected.
- ▶ Before setting [ID print], make the authorization settings in the printer. For details, see the printer user’s guide.

ID

Input your ID Number registered with the printer.



- ▶ IDs are allocated to each individual user in the range from 0 to 99. For details, ask the administrator of the printer.

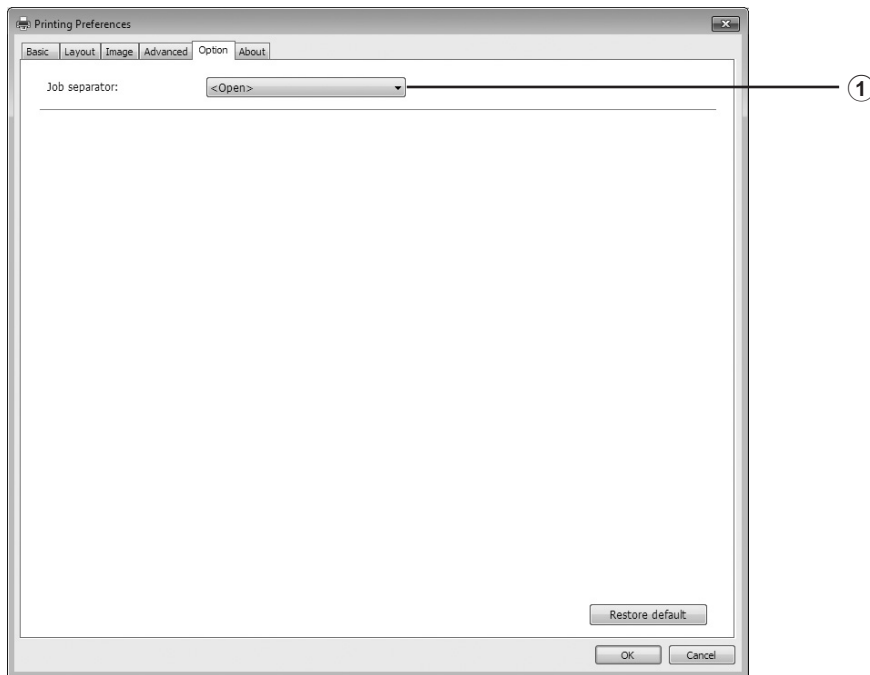
⑪ Activate the Confidential mode after job completes

You can prevent your confidential documents from being duplicated without your knowledge by selecting this check box. When this check box is selected, the remaining master is automatically replaced with a blank one after all specified print jobs are finished.

⑫ Output the data after initializing printer

Your RISO printer is initialized before receiving print data when this check box is selected. It is recommended to select this check box in most cases.

[Option] Tab



① Job separator

The optional settings are displayed if your RISO printer is equipped with optional devices, which are selected in the [Environment] tab. (📖 33)

① Job separator

You can activate the job separator on your RISO printer and select the timing of separation tape insertion.

<Open> : Follow the present setting of your RISO printer.

OFF : No separation tape inserted.

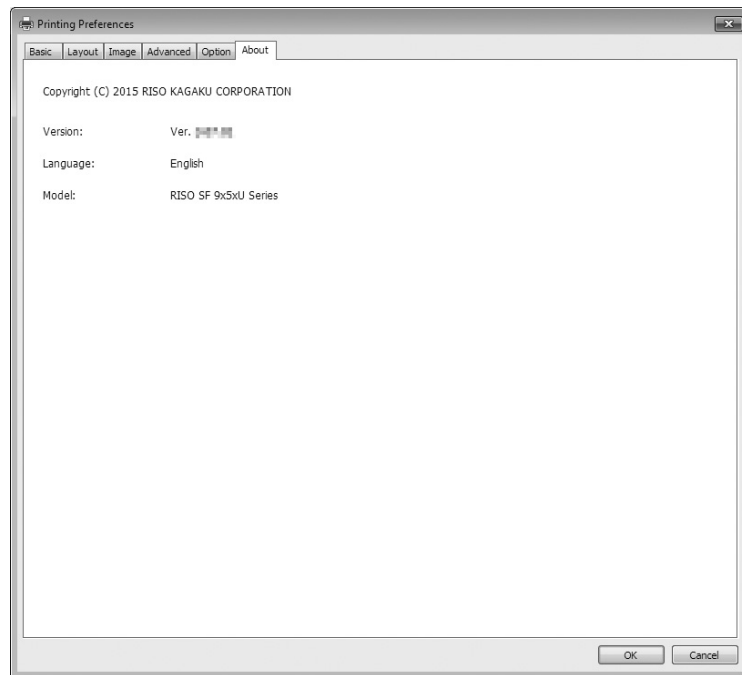
ON-Between jobs : Insert separation tapes per job.

ON-Between Pages : Insert separation tapes per page.



► Refer to the user's guide of the job separator for its functions and operations.

[About] Tab



This tab shows the version number, language and model name of your Printer Driver. In case you contact your service representative because of function errors, check this version number and so on beforehand.

Creating a RISORINC-format file

It is necessary to create a RISORINC-format file before sending data via FTP.



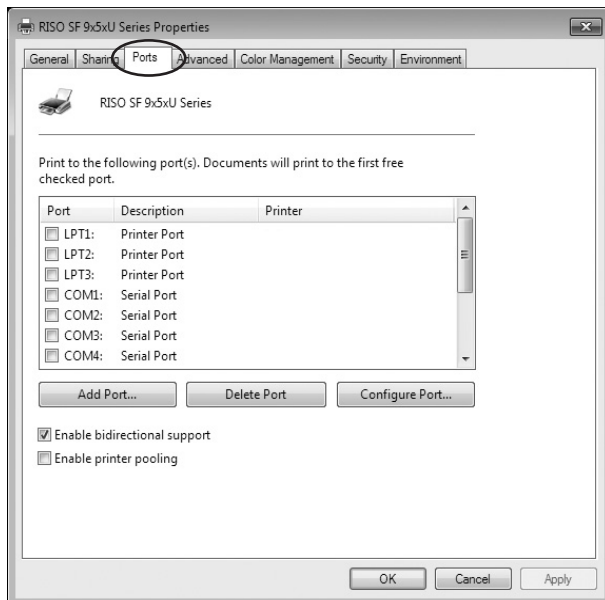
- ▶ A RISORINC-format file can only be used with RISO printers.
All settings made in the Printer Driver are saved with the file.

Adding a Local Port for RISORINC Files

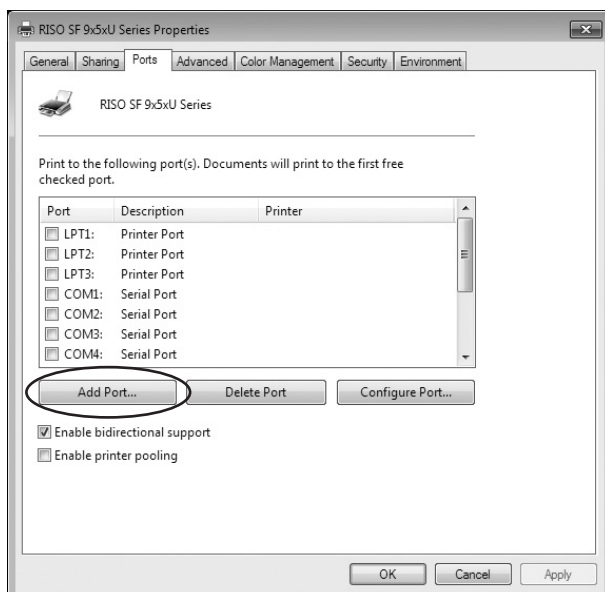
1 Open the Properties dialog box.

See Steps 1 and 2 on [page 33](#).

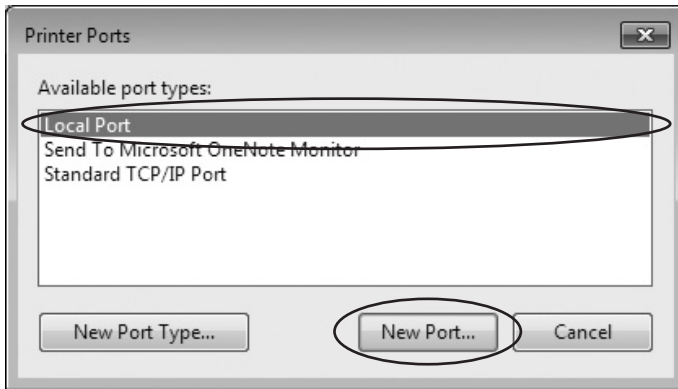
2 Open the [Ports] tab.



3 Click [Add Port].

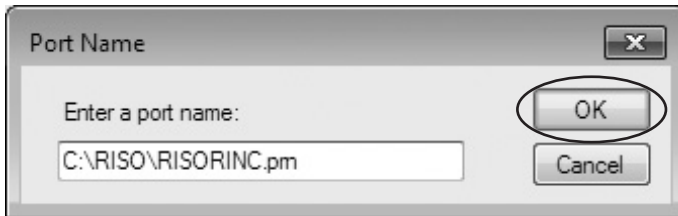


4 Select [Local Port] and click [New Port].



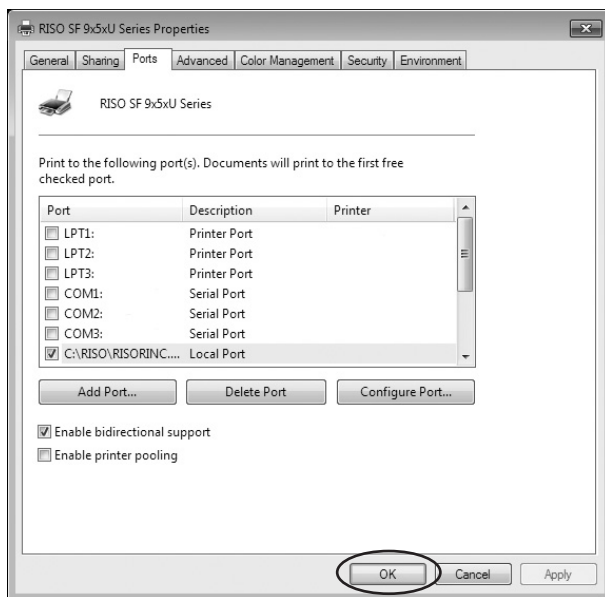
5 The [Port Name] dialog box opens, therefore input the drive and folder name where to store the RISORINC file (i.e., C:\RISO) and the file name (i.e., RISORINC.prn), and click [OK].


If "C:\RISO\RISORINC.prn" is input for [Port Name], the file named "RISORINC.prn" is saved in the "RISO" folder of the C drive.




Selecting a Local Port for RISORINC Files

- 1 **Open the Properties dialog box.**
See Steps 1 and 2 on [33](#).
- 2 **Open the [Ports] tab.**
- 3 **Place a check mark in the check box of the Local Port for RISORINC files that was added under [Print Port], and [OK].**



- 

▶ After creating the RISORINC file using the [Layout] feature, restore the usual print port in the same way you set the Local Port.
- 

▶ It is convenient to install two RISO Printer Drivers and register one for printer output and the other for RISORINC Files.

Outputting RISORINC Files

1 Open the [Print] dialog box.

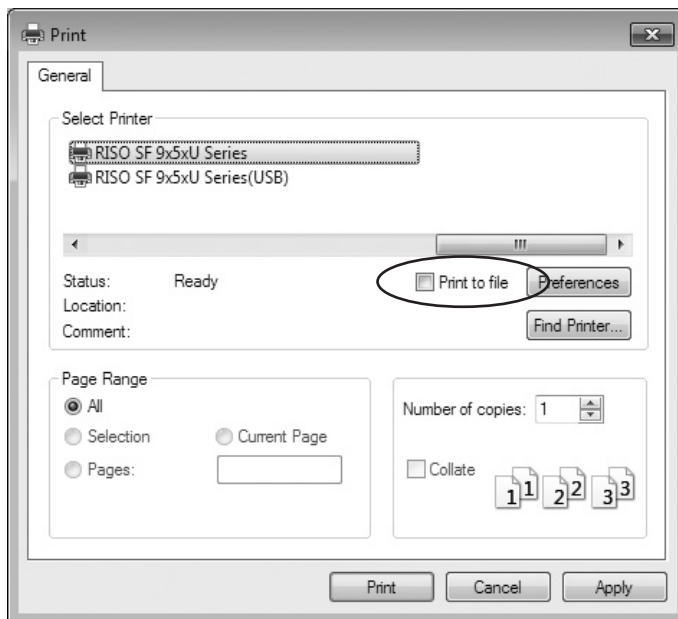
Open the original data to convert to RISORINC format, and select [Print] from the [File] menu.

2 Check print conditions.

Check that the RISO Printer Driver in which the Local Port has been selected for RISORINC files appears in the [Select Printer] list.

3 Output to file.

Remove the check mark from the [Print to file] check box and click [Print]. The file is saved under the name and folder set for the Local Port.



- ▶ Remove the check mark from the [Print to file] check box. Data is automatically output to a file.
- ▶ To output other original data, either move or rename the currently saved RISORINC file. If output as is, the saved file is overwritten.



Chapter 3

Uninstalling the Printer Driver

The procedure of uninstalling the Printer Driver by using the uninstaller is described here.

In the case of uninstallation using the uninstaller, the driver package cannot be deleted. When the driver package needs to be deleted, in such cases as for re-installation of the Printer Driver, uninstall the Printer Driver manually.

Uninstall the Printer Driver64

Uninstall the Printer Driver

The procedure of uninstalling the Printer Driver is described here.
(Regarding the procedure of manual uninstallation, see [46](#) 66.)



► To uninstall the Printer Driver, it is necessary to log on to Windows by the account with the authority to change the system setting (administrator, etc.).

1

Start the Uninstaller.

For Windows Vista/Windows 7:

Click [Start]-[All Programs]-[RISO]-[(Your printer model, XX Series)]-[Uninstaller] in this order.

For Windows 8.1:

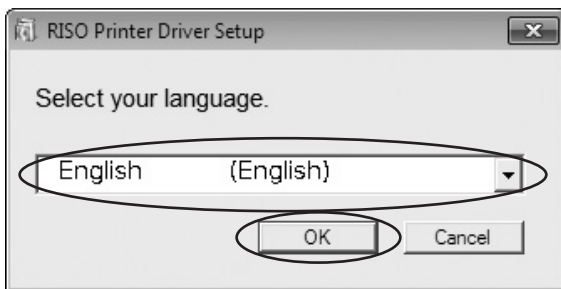
Open the “Apps” screen and click [Uninstaller] in the [RISO (Your printer model, XX Series)] group.

For Windows 10:

Click [Start]-[All apps]-[RISO (Your printer model, XX Series)]-[Uninstaller] in this order.

2

Select your language from the drop-down list, then click [OK].

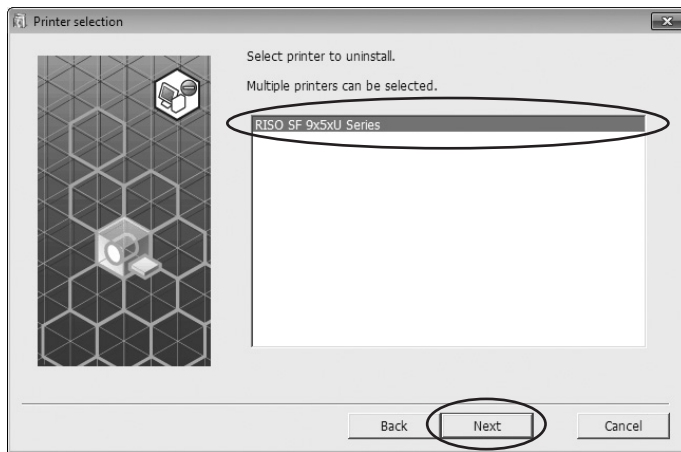


3

Click [Next].

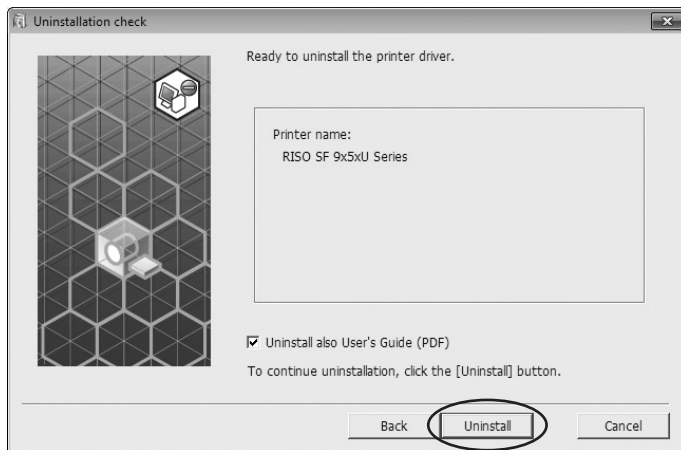


4 Select the printer for which the Printer Driver needs to be uninstalled and click [Next].



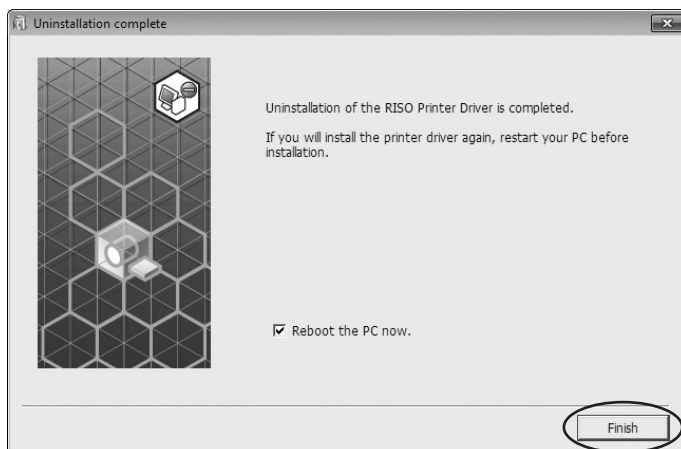
5 Click [Uninstall].

When you place a checkmark in the [Uninstall also User's Guide (PDF)] checkbox, the User's Guide (PDF) will also be uninstalled.



6 Click [Finish].

When the Printer Driver has been uninstalled, be sure to restart your computer. When [Reboot the PC now.] is checked, your computer is restarted after [Finish] is clicked.





Chapter 4

Manually installing / uninstalling the Printer Driver

The procedure of installing / uninstalling the Printer Driver without using the installer / uninstaller is described here.

Windows Vista: Manual installation/uninstallation	67
▪ Manual installation with a USB Cable Connection	67
▪ Manual Installation with a Network Connection/USB Flash Drive Output	69
▪ Manual uninstallation	70
Windows 7: Manual installation/uninstallation	71
▪ Manual installation with a USB Cable Connection	71
▪ Manual Installation with a Network Connection/USB Flash Drive Output	73
▪ Manual uninstallation	74
Windows 8.1: Manual installation/uninstallation	75
▪ Manual installation with a USB Cable Connection	75
▪ Manual Installation with a Network Connection/USB Flash Drive Output	77
▪ Manual uninstallation	78
Windows 10: Manual installation/uninstallation	79
▪ Manual installation with a USB Cable Connection	79
▪ Manual Installation with a Network Connection/USB Flash Drive Output	81
▪ Manual uninstallation	82

Windows Vista: Manual installation/uninstallation



- ▶ To install the Printer Driver, it is necessary to log on to Windows by the account with the authority to change the system setting (administrator etc.).
- ▶ Printer sharing is not supported.

Manual installation with a USB Cable Connection

- 1** Turn the power of the printer on, and connect the **USB** cable to the printer.
- 2** Start your computer.
- 3** Connect the **USB** cable to your computer.
- 4** In the **[Found New Hardware]** window, select **[Locate and install driver software]** and then **[Don't search online]**.
- 5** Select **[I don't have the disk. Show me other options.]**, and then **[Browse my computer for driver software]**.
- 6** Insert the **[RISO Printer Driver]** DVD-ROM into your computer.
- 7** In the **[Browse]** window, select the **inf** file of the driver to install.
For a 32-bit OS:
(DVD-ROM): **[Windows 32-bit]-[Driver]-[Windows]-[English]-RISODRV.INF**
For a 64-bit OS:
(DVD-ROM): **[Windows 64-bit]-[Driver]-[Windows]-[English]-RISODRV.INF**
- 8** Select the printer in use and click **[Next]**.
- 9** Restart your computer.
- 10** Open **[Control Panel]-[Hardware and Sound]-[Printers]** in this order, and open the properties of the printer in which the Printer Driver has been installed.
- 11** Click **[Print processor]** of the **[Details]** tab.

12 Select the following print processor from the list and click it.

For a 32-bit OS:

R36V8PP

For a 64-bit OS:


R36V6PP

13 Select [NT EMF 1.008] from the list of default data types, and click [OK].

14 Print the test page.

Manual Installation with a Network Connection/USB Flash Drive Output

- 1** Open [Control Panel]-[Hardware and Sound]-[Printers] in this order, and select [Add a Printer] for starting.
- 2** Click [Add a local printer] of the [Add a Printer] dialog box.
- 3** Create the port.
In the case of network connection : Create TCP/IP port or LPR port.
In the case of USB Flash Drive output : Create the local port (C:\RISO\RISORINC.prn, etc.).

 **▶ You cannot create the local port in the route of the startup drive.
Create any folder, and then create the local port in the folder.**
- 4** Click [Have Disk], and select the inf file of the driver to install.
In the case of network connection:
For a 32-bit OS: (DVD-ROM):[Windows 32-bit]-[Driver]-[Windows]-[English]-RISODRV.INF
For a 64-bit OS: (DVD-ROM):[Windows 64-bit]-[Driver]-[Windows]-[English]-RISODRV.INF
In the case of USB Flash Drive output:
For a 32-bit OS: (DVD-ROM):[Windows 32-bit]-[Driver]-[Windows]-[English]-[USB flash]-RISODRV.INF
For a 64-bit OS: (DVD-ROM):[Windows 64-bit]-[Driver]-[Windows]-[English]-[USB flash]-RISODRV.INF
- 5** Select the printer in use, and click [Next].
- 6** In the case of network connection, print the test page.
- 7** Restart your computer.

Manual uninstallation


- 1** Open [Control Panel]-[Hardware and Sound]-[Printers] in this order, and delete the printer to uninstall.
- 2** From the menu that will be displayed by right-clicking on the margin of the [Printers] folder, select [Run as administrator] and then [Server properties].
- 3** From the [Driver] tab, select the Printer Driver to uninstall, and click [Delete].
- 4** When the [Delete driver and package] dialog opens, select [Delete driver and driver package] to delete the driver and driver package.

Windows 7: Manual installation/uninstallation



- ▶ To install the Printer Driver, it is necessary to log on to Windows by the account with the authority to change the system setting (administrator etc.).
- ▶ Printer sharing is not supported.

Manual installation with a USB Cable Connection

- 1** Turn the power of the printer on, and connect the USB cable to the printer.
- 2** Start your computer.
- 3** Connect the USB cable to your computer.
 -  ▶ Do not proceed to the following steps until [Device driver software was not successfully installed] appears in the task tray.
- 4** Activate [Device Manager].
Click [Start] icon-[Control Panel]-[Hardware and Sound]-[Device Manager].
- 5** Right-click [Other devices]-[(Your printer name)] and then click [Update Driver Software] from the menu that appears.
- 6** Click [Browse my computer for driver software].
- 7** Insert the [RISO Printer Driver] DVD-ROM into your computer.
- 8** Click [Browse], select the folder shown below and click [OK].
 For a 32-bit OS:
 (DVD-ROM):[Windows 32-bit]-[Driver]-[Windows]-[English]
 For a 64-bit OS:
 (DVD-ROM):[Windows 64-bit]-[Driver]-[Windows]-[English]
- 9** Select [(Your printer name)] from the list and click [Next].
- 10** Click [Close] and restart your computer.
- 11** Open [Control Panel]-[Hardware and Sound]-[Devices and Printers] in this order, right-click on the installed printer and click [Printer properties] from the menu that appears.

12 Click [Print processor] of the [Advanced] tab.

13 Select the following print processor from the list and click it.

For a 32-bit OS:

R36V8PP

For a 64-bit OS:

R36V6PP


14 Select [NT EMF 1.008] from the list of default data types, and click [OK].

15 Print a test page from the [General] tab.

16 Click [OK] to close the window.

Manual Installation with a Network Connection/USB Flash Drive Output

- 1** Open [Control Panel]-[Hardware and Sound]-[Devices and Printers] in this order, and select [Add a Printer] for starting.
- 2** Click [Add a local printer] of the [Add a Printer] dialog box.
- 3** Create the port.
In the case of network connection : Create TCP/IP port or LPR port.
In the case of USB Flash Drive output : Create the local port (C:\RISO\RISORINC.prn, etc.).

 **▶ You cannot create the local port in the route of the startup drive.
Create any folder, and then create the local port in the folder.**

Create a folder (e.g., C:\RISO) in the C drive, and create a local port (e.g., RISORINC.prn) in that folder. You cannot create a local port in the root of the startup drive.
- 4** Insert the [RISO Printer Driver] DVD-ROM into your computer.
- 5** Click [Have Disk].
- 6** In the [Browse] window, select the following inf file and click [OK].
In the case of a network connection:
For a 32-bit OS: (DVD-ROM):[Windows 32-bit]-[Driver]-[Windows]-[English]-RISODRV.INF
For a 64-bit OS: (DVD-ROM):[Windows 64-bit]-[Driver]-[Windows]-[English]-RISODRV.INF
In the case of a USB Flash Drive output:
For a 32-bit OS: (DVD-ROM):[Windows 32-bit]-[Driver]-[Windows]-[English]-[USB flash]-RISODRV.INF
For a 64-bit OS: (DVD-ROM):[Windows 64-bit]-[Driver]-[Windows]-[English]-[USB flash]-RISODRV.INF
- 7** Select [(Your printer name)] from the list and click [Next].
- 8** Enter the [Printer name] and click [Next].
- 9** In the case of network connection, print the test page.
- 10** Click [Finish] to close the window.
- 11** Restart your computer.

Manual uninstallation


- 1** Open [Control Panel]-[Hardware and Sound]-[Devices and Printers] in this order, and delete the printer to uninstall from the printer folder.
- 2** Click on the existent printer and click [Print server properties] at the top of the window.
- 3** In the [Drivers] tab, click [Change driver settings].
- 4** Select the Printer Driver you want to uninstall, and click the [Delete] button.
- 5** When the [Remove Driver And Package] dialog opens, select [Remove driver and driver package.] to delete the driver and driver package.

Windows 8.1: Manual installation/uninstallation



- ▶ To install the Printer Driver, it is necessary to log on to Windows by the account with the authority to change the system setting (administrator etc.).
- ▶ Printer sharing is not supported.

Manual installation with a USB Cable Connection

- 1** Turn the power of the printer on, and connect the **USB** cable to the printer.
- 2** Start your computer.
- 3** Connect the **USB** cable to your computer.
- 4** **Activate [Device Manager].**
Open the “Apps” screen and click [Control Panel]-[Hardware and Sound]-[Device Manager].
- 5** **Right-click [Other devices]-[(Your printer name)] and then click [Update Driver Software] from the menu that appears.**
 -  ▶ If your printer name is not displayed, click [Action]-[Scan for hardware changes].
- 6** Click [**Browse my computer for driver software**].
- 7** Insert the [**RISO Printer Driver**] DVD-ROM into your computer.
- 8** Click [**Browse**], select the folder shown below and click [**OK**].
For a 32-bit OS:
 (DVD-ROM):[Windows 32-bit]-[Driver]-[Windows]-[English]
For a 64-bit OS:
 (DVD-ROM):[Windows 64-bit]-[Driver]-[Windows]-[English]
- 9** Select [(Your printer name)] from the list and click [**Next**].
- 10** Click [**Close**] and restart your computer.
- 11** Open [Control Panel]-[Hardware and Sound]-[Devices and Printers] in this order, right-click on the installed printer and click [**Printer properties**] from the menu that appears.

12 Click [Print processor] of the [Advanced] tab.

13 Select the following print processor from the list and click it.

For a 32-bit OS:

R36V8PP

For a 64-bit OS:

R36V6PP


14 Select [NT EMF 1.008] from the list of default data types, and click [OK].

15 Print a test page from the [General] tab.

16 Click [OK] to close the window.

Manual Installation with a Network Connection/USB Flash Drive Output

- 1** Open [Control Panel]-[Hardware and Sound]-[Devices and Printers] in this order, and select [Add a Printer] for starting.
- 2** Click [Add a local printer] of the [Add a Printer] dialog box.
- 3** Create the port.
In the case of network connection : Create TCP/IP port or LPR port.
In the case of USB Flash Drive output : Create the local port (C:\RISO\RISORINC.prn, etc.).

 **▶ You cannot create the local port in the route of the startup drive.
Create any folder, and then create the local port in the folder.**

Create a folder (e.g., C:\RISO) in the C drive, and create a local port (e.g., RISORINC.prn) in that folder. You cannot create a local port in the root of the startup drive.
- 4** Insert the [RISO Printer Driver] DVD-ROM into your computer.
- 5** Click [Have Disk].
- 6** In the [Browse] window, select the following inf file and click [OK].
In the case of a network connection:
For a 32-bit OS: (DVD-ROM):[Windows 32-bit]-[Driver]-[Windows]-[English]-RISODRV.INF
For a 64-bit OS: (DVD-ROM):[Windows 64-bit]-[Driver]-[Windows]-[English]-RISODRV.INF
In the case of a USB Flash Drive output:
For a 32-bit OS: (DVD-ROM):[Windows 32-bit]-[Driver]-[Windows]-[English]-[USB flash]-RISODRV.INF
For a 64-bit OS: (DVD-ROM):[Windows 64-bit]-[Driver]-[Windows]-[English]-[USB flash]-RISODRV.INF
- 7** Select [(Your printer name)] from the list and click [Next].
- 8** Enter the [Printer name] and click [Next].
- 9** In the case of network connection, print the test page.
- 10** Click [Finish] to close the window.
- 11** Restart your computer.

Manual uninstallation


- 1** Open [Control Panel]-[Hardware and Sound]-[Devices and Printers] in this order, and delete the printer to uninstall from the printer folder.
- 2** Click on the existent printer and click [Print server properties] at the top of the window.
- 3** In the [Drivers] tab, click [Change driver settings].
- 4** Select the Printer Driver you want to uninstall, and click the [Delete] button.
- 5** When the [Remove Driver And Package] dialog opens, select [Remove driver and driver package.] to delete the driver and driver package.

Windows 10: Manual installation/uninstallation



- ▶ To install the Printer Driver, it is necessary to log on to Windows by the account with the authority to change the system setting (administrator etc.).
- ▶ Printer sharing is not supported.

Manual installation with a USB Cable Connection

- 1** Turn the power of the printer on, and connect the **USB** cable to the printer.
- 2** Start your computer.
- 3** Connect the **USB** cable to your computer.
- 4** **Activate [Device Manager].**
Right-click on the [Start] icon and click [Control Panel]-[Hardware and Sound]-[Device Manager].
- 5** **Right-click [Other devices]-[(Your printer name)] and then click [Update Driver Software] from the menu that appears.**
 -  ▶ If your printer name is not displayed, click [Action]-[Scan for hardware changes].
- 6** Click [**Browse my computer for driver software**].
- 7** Insert the [**RISO Printer Driver**] DVD-ROM into your computer.
- 8** Click [**Browse**], select the folder shown below and click [**OK**].
For a 32-bit OS:
 (DVD-ROM):[Windows 32-bit]-[Driver]-[Windows]-[English]
For a 64-bit OS:
 (DVD-ROM):[Windows 64-bit]-[Driver]-[Windows]-[English]
- 9** Select [(Your printer name)] from the list and click [**Next**].
- 10** Click [**Close**] and restart your computer.
- 11** Open [Control Panel]-[Hardware and Sound]-[Devices and Printers] in this order, right-click on the installed printer and click [**Printer properties**] from the menu that appears.

12 Click [Print processor] of the [Advanced] tab.

13 Select the following print processor from the list and click it.

For a 32-bit OS:

R36V8PP

For a 64-bit OS:

R36V6PP


14 Select [NT EMF 1.008] from the list of default data types, and click [OK].

15 Print a test page from the [General] tab.

16 Click [OK] to close the window.

Manual Installation with a Network Connection/USB Flash Drive Output

- 1** Open [Control Panel]-[Hardware and Sound]-[Devices and Printers] in this order, and select [Add a Printer] for starting.
- 2** Click [Add a local printer] of the [Add a Printer] dialog box.
- 3** Create the port.
In the case of network connection : Create TCP/IP port or LPR port.
In the case of USB Flash Drive output : Create the local port (C:\RISO\RISORINC.prn, etc.).

 **▶ You cannot create the local port in the route of the startup drive.
Create any folder, and then create the local port in the folder.**

Create a folder (e.g., C:\RISO) in the C drive, and create a local port (e.g., RISORINC.prn) in that folder. You cannot create a local port in the root of the startup drive.
- 4** Insert the [RISO Printer Driver] DVD-ROM into your computer.
- 5** Click [Have Disk].
- 6** In the [Browse] window, select the following inf file and click [OK].
In the case of a network connection:
For a 32-bit OS: (DVD-ROM):[Windows 32-bit]-[Driver]-[Windows]-[English]-RISODRV.INF
For a 64-bit OS: (DVD-ROM):[Windows 64-bit]-[Driver]-[Windows]-[English]-RISODRV.INF
In the case of a USB Flash Drive output:
For a 32-bit OS: (DVD-ROM):[Windows 32-bit]-[Driver]-[Windows]-[English]-[USB flash]-RISODRV.INF
For a 64-bit OS: (DVD-ROM):[Windows 64-bit]-[Driver]-[Windows]-[English]-[USB flash]-RISODRV.INF
- 7** Select [(Your printer name)] from the list and click [Next].
- 8** Enter the [Printer name] and click [Next].
- 9** In the case of network connection, print the test page.
- 10** Click [Finish] to close the window.
- 11** Restart your computer.

Manual uninstallation

- 1** Open [Control Panel]-[Hardware and Sound]-[Devices and Printers] in this order, and delete the printer to uninstall from the printer folder.
- 2** Click on the existent printer and click [Print server properties] at the top of the window.
- 3** In the [Drivers] tab, click [Change driver settings].
- 4** Select the Printer Driver you want to uninstall, and click the [Delete] button.
- 5** When the [Remove Driver And Package] dialog opens, select [Remove driver and driver package.] to delete the driver and driver package.



Chapter 5

Appendix

Error Message on PC's Display	84
Operation Problems	85
▪ No Printout	85
▪ Unexpected Print Result.....	86
▪ Unexpected Action	87
▪ Unable to Specify Settings	87

Error Message on PC's Display

Take actions as given below if the following error messages appear in the PC's display.

Message	Description	Action
The printer is not ready for printing. (The device is not ready.)	This message appears when your RISO printer requires paper or it is not connected to your computer properly.	Replenish paper or check your RISO printer and the printer cable for poor connection, and then restart printing.
	This message also appears when the memory of your RISO printer becomes full during data transmission because the size of the document data concerned is too large.	Reduce the file size of the document data concerned or increase the value of the [Timeout] setting in your computer system, and then restart printing.
Cannot print because an error is found in the current printer settings.	This message appears if the printer settings (paper size, print orientation, etc.) in the application software and the Printer Driver do not match.	Change the printer settings in the application software to make them identical with those in the Printer Driver or vice versa.

Operation Problems

Check your system setup as given below if you encounter the following operation problems. Contact your service representative for help if you cannot solve the problem.

No Printout

Problem	Cause / Condition	Action
Your RISO printer is not receiving data from your computer even after the print job finishes in the application software.	Your computer is not securely connected to your RISO printer.	Connect the printer cable (or network cable) to both your computer and your RISO printer securely.
	The [RISO...] Printer Driver is not selected.	Select it and reprint.
	[Printing] is displayed as the printer status when you open the [RISO...] printer monitor window.	Wait until the printer status display changes in the [RISO...] printer monitor window.
Your RISO printer cannot finish processing the current document data.	The printer cable (or network cable) was removed just after a print job started in the application software. ([Printing] is displayed when you open the [RISO...] printer monitor window in this case.)	Reconnect the cable and cancel the current job in the [RISO...] printer monitor window. Then turn off the main power switch of your RISO printer. After approximately 10 seconds, turn it on again.
	[Pause] is displayed as the printer status when you open the [RISO...] printer monitor window.	Click [Restart] in the [Document] menu in the [RISO...] printer monitor window.
	The printer settings (paper size, print orientation, etc.) in the application software and in the Printer Driver do not match.	Change the printer settings in the application software to make them identical with those in the Printer Driver or vice versa, and repeat the print job from the application software.
	The print job has been canceled before completion in the application software on your computer.	Turn off the main power switch of your RISO printer. After approximately 10 seconds, turn it on again.
Your RISO printer won't start making master when the documentation data is transmitted from your computer or your RISO printer won't start printing after making master.	If you set the [Auto-process] to a setting other than "ON", the process stops in operation in order to wait for instructions.	Press Start key on your RISO printer. The next process starts.

Unexpected Print Result

Problem	Cause / Condition	Action
Graphics cannot be printed properly.	The current [RISO...] printer driver was not selected as active when editing graphics.	Select the current [RISO...] Printer Driver and edit graphics again because graphics may not be printed properly if they are edited with another Printer Driver selected.
	The specified custom paper size was so large that unexpected margins were assigned on a page.	Select another paper size or specify the custom paper size within the valid range.
Images are reduced unexpectedly.	Do you use the Printer Driver corresponding to your RISO printer?	If the name of your RISO printer is different from the model name of your Printer Driver, the document data cannot be printed out correctly.
Some fonts cannot be printed properly.	The [Use Printer Font] option is selected in the application software.	Cancel the [Use Printer Font] option in the application software.
The page image is not centered or is clipped at an edge.	The paper size setting in the application software is not identical with that in the Printer Driver.	Make both paper size setting identical.
	The print area specified in the application software is beyond the maximum print area of your RISO printer.	Increase the border margins in the application software to contain the page image within the printable area of your RISO printer.
	There is something wrong with the Drum in your RISO printer.	Check your RISO printer, referring to the dedicated user's guide.

Unexpected Action

Problem	Cause / Condition	Action
Your RISO printer repeats the master-making process for each copy of the identical page.	The [Collated] check box is selected in the [Print] dialog box in the application software.	Cancel the current print job on your computer and turn off the main power switch of your RISO printer. After approximately 10 seconds, turn it on again. Always cancel the [Collate Copies] or [Collated] option in the [Print] dialog box when starting a print job.
Your RISO printer does not operate as specified in the [Sorter control] option in the Printer Driver.	The finishing job specified in the [Sorter control] option is not available for the current combination of your RISO printer and an optional sorter.	Refer to the dedicated user's guides of your RISO printer and the optional sorter.
Original data cannot be output to the USB Flash Drive.	Are you using the Printer Driver for USB Flash Drive?	There are two types of Printer Drivers. To output to a USB Flash Drive, install the USB flash-via-Printer Driver. Data cannot be output to a USB Flash Drive using an ordinary Printer Driver. (📖 23)
	Are you using a USB Flash Drive formatted for RISO folders?	Create a folder just for RISO files in the USB Flash Drive. (📖 28)

Unable to Specify Settings

Problem	Cause / Condition	Action
A name cannot be entered in the dialog box to register the custom paper size.	The name is too long for the corresponding field.	Valid range of the length is 30 characters.
A desired value cannot be entered in the corresponding fields to register the custom paper size.	The value does not fall within the range.	Enter the value within the valid ranges into the relevant fields.
The custom paper size cannot be registered in the [RISO...] printer driver.	The relevant dialog box was not closed correctly.	Click [OK] on [Environment] tab after closing the [Custom paper entry] dialog box. (📖 34)
The specified custom paper size cannot be selected in the application	[Custom] is not selected in the [Paper Size] option in the [Properties] dialog box of the Printer Driver.	Select [Custom] in the [Paper Size] option.
	[Paper Size: Custom] cannot be selected in the [Printer Setup] dialog box in the application software.	Specify a standard paper size which is larger than the specified custom one.

