
RISO Printer Driver

USER'S GUIDE
**for MZ10/MZ8/RZ10/EZ5x1/
EZ3x1/EZ2x1 Series**

The RISO logo, consisting of the word "RISO" in a stylized, bold, sans-serif font. The letters are interconnected, with the 'R' and 'I' sharing a vertical stroke, and the 'S' and 'O' sharing a vertical stroke. The logo is located in the bottom left corner of the page.

RISO

Ms6011-15E

This document is intended for use by RISO, its authorized dealers and purchasers of the equipment described herein. While every effort has been made to insure the accuracy of information contained in this document, RISO, its authorized dealers and their employees shall not be held responsible for any inaccuracies it may contain.

ALL SPECIFICATIONS ARE SUBJECT TO CHANGE WITHOUT NOTICE.

The screens used in this manual are now under development. Therefore, they might be different from the actual screens.

Reproduction or copying of this manual or any parts without permission is strictly prohibited.

Although every effort has been made to ensure that the contents of this manual are error-free, please contact us if you notice any errors or other points which should be brought to the company's attention.

Copyright © 2014 RISO KAGAKU CORPORATION

- Windows and Windows Vista are trademarks of Microsoft Corporation in the U.S.A. and other countries.
- Product names and company names that are referenced in this guide are (registered) trademarks of respective companies.
- The screens and content appearing in this manual may differ from the actual product.
- The screens and messages appear in procedures may differ depending on the type of computer and application.

Preface

Welcome to the high-speed PC printing field presented by RISO printers through RISO Printer Drivers.

The RISO printers, which are designed to operate as a high-speed GDI printer, enable you to print various documents you create on different computer platforms very speedily, only if an appropriate RISO Printer Driver is installed in your computer.

The GDI printer, as you know, uses the bit-mapped image data developed on your PC monitor screen as print data source, enabling you to print the exactly same image as of what you see on your PC monitor screen in most cases. Besides, it requires no printer font to print document, thus relieving you of the restrictions on the use of fonts when you create documents on your PC.

The RISO printers can also operate as a network printer under various LAN environments, with an additional network interface card embedded inside.

About the Guide Signs

The following advice signs are given to the descriptions which will help a user to avoid unexpected troubles and obtain the optimum performance of this product.

- **IMPORTANT !**

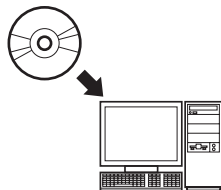
Gives you helpful advice for trouble-free operation.

- **NOTE** Gives you tips for more effective use of this product.

Procedure before printing

Before you use the printer at the first time, carry out the installation procedure below. After installation, follow the basic operation procedure. Then, you can print out the documentation data.

Installation (When the printer is used at the first time)



Installing the Printer Driver

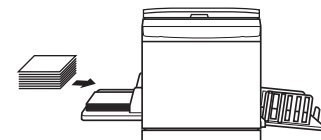
Install the RISO Printer Driver into your computer. [Page 8](#)

- Depending on the connecting method, your computer needs to be connected to the printer in advance.

OS Support

This Printer Driver supports following OS:
Windows® XP (32-bit)/Windows Vista® (32-bit/64-bit)/
Windows® 7 (32-bit/64-bit)/Windows® 8 (32-bit/64-bit)*/
Windows® 8.1 (32-bit/64-bit)*

* Only compatible with desktop app

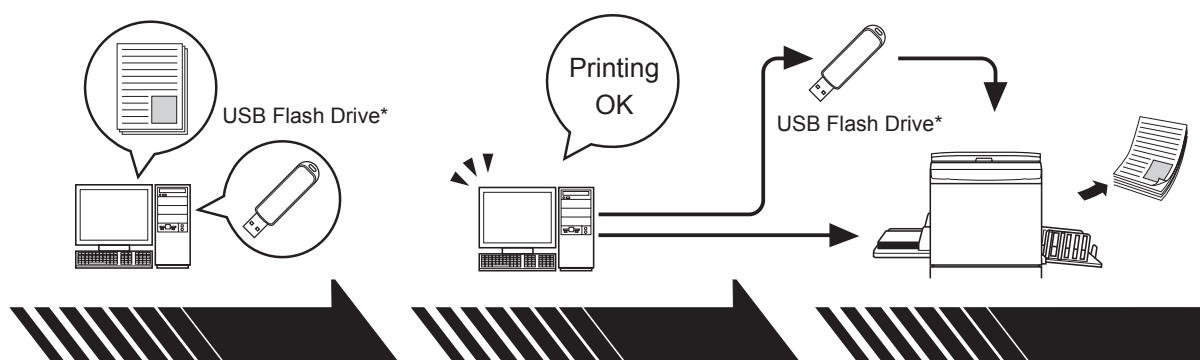


1. Preparing for the printer

Prepare for the printer and put the print paper suitable for the original data to be printed out onto the standard tray.

- For the preparation method for the printer, read the user's guide of the RISO printer.

Basic operation



2. Setting

Open the data you want to print out with your computer, select your Printer Driver (or the USB flash-via-Printer Driver) and make settings for printing.

To print from a USB Flash Drive*, connect the USB Flash Drive to your computer.

3. Printing

Open the [Print] dialog box on your PC and click [OK]. The data is transmitted to the printer or stored in the USB Flash Drive.

4. Completion of printing

The printer receives the data and makes master and prints out the data.

To print from a USB Flash Drive*, connect the USB Flash Drive to the printer.

* With the EZ3x1/EZ2x1 Series, printing cannot be done from USB Flash Drives.

Connecting Methods and Printer Driver types

The types of Printer Drivers are as follows:

Printer Driver

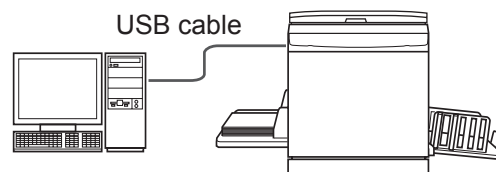
USB flash-via-Printer Driver

Choose the Printer Driver to install according to your environment.

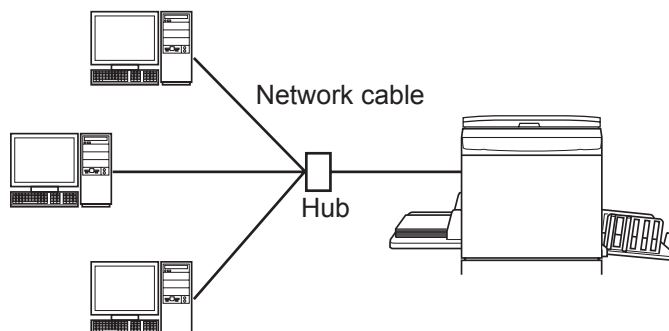
■ The environment for being connected via cable

In the following environment, the Printer Driver should be used.

● When connected via USB cable [Page 9](#)

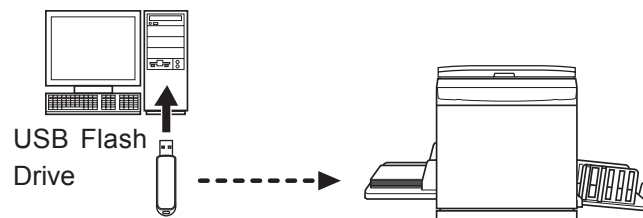


● When connected via network [Page 25](#)



■ The environment for not being connected via cable [Page 35](#)

Save the data to the USB Flash Drive by using the USB flash-via-Printer Driver. Connect the USB Flash Drive to the printer to print out the data.



- NOTE**
- Even in the environment where the printer and your computer are connected via cable, the data can be printed by using USB Flash Drive.
 - USB Flash Drive cannot be used for the EZ3x1/EZ2x1 series.

Table of Contents

Preface	2
Procedure before printing	3
Connecting Methods and Printer Driver types.....	5
Table of Contents.....	6

Installing the Printer Driver

■ USB Connection	9
Installing the Printer Driver	9
Creating a USB port	23
USB Device Association	24
■ Network Connection	25
Connecting with PC	25
Installing the Printer Driver	26
■ USB Flash Drive Output	35
About USB Flash Drive.....	35
Installing the USB flash-via-Printer Driver	35
Create a Folder.....	41
Printing a test page.....	42

Working with the Printer Driver

■ Changing the Printer Driver Configuration	45
■ Sending and Printing Data	49
■ Setting the Print Conditions	53
[Basic] Tab	54
[Layout] Tab	59
[Coloring] Tab.....	63
[Image] Tab	68
[Advanced] Tab	71
[Option] Tab	75
[About] Tab.....	77
■ Creating a RISORINC-format file	78
Creating RISORINC Files When Using the [Layout] Tab Setting	80

Preview and Edit

■ Preview and Edit	82
Preview and Edit Window	82

Uninstalling the Printer Driver

■ Uninstall the Printer Driver	90
---	-----------

Manually installing / uninstalling the Printer Driver

For Windows XP	94
■ Manual installation	94
In the case of USB cable connection.....	94
In the case of network connection / USB Flash Drive output	95
■ Manual uninstallation	96
For Windows Vista	97
■ Manual installation	97
In the case of USB cable connection.....	97
In the case of network connection / USB Flash Drive output	99
■ Manual uninstallation	100
For Windows 7	101
■ Manual installation	101
In the case of USB cable connection.....	101
In the case of network connection / USB Flash Drive output	102
■ Manual uninstallation	104
For Windows 8/Windows 8.1	105
■ Manual installation	105
In the case of USB cable connection.....	105
In the case of network connection / USB Flash Drive output	106
■ Manual uninstallation	108

Appendix

Troubleshooting Tips	110
Error Message on PC's Display	110
Operation Problems	111

Installing the Printer Driver

The method of installing the Printer Driver using the installer is described here.

■ USB Connection	9
Installing the Printer Driver	9
Creating a USB port	23
USB Device Association	24
■ Network Connection	25
Connecting with PC	25
Installing the Printer Driver	26
■ USB Flash Drive Output	35
About USB Flash Drive	35
Installing the USB flash-via-Printer Driver	35
Create a Folder	41
Printing a test page	42

■ USB Connection

Installing the Printer Driver

This section describes how to install the Printer Driver for windows supporting the Plug&Play installation when your computer and the RISO printer are connected via USB cable.

(Regarding the procedure for manual installation, see [page 93](#).)

IMPORTANT!

- You are required to have the administrator's privilege to install the printer driver program in your computer.
- This Printer Driver does not support server OS or printer sharing.
- Use a commercially available USB cable (Hi-speed USB, 3m or less).

For Windows Vista/Windows 7/Windows 8/Windows 8.1

To update the Printer Driver, change cable connections or reinstall a Printer Driver of the same series, deletion of the driver package is required. Uninstall the installed Printer Driver manually before new installation. "Manual uninstallation" ([Page 93](#))

0

Make sure that the printer is turned off and that the computer and printer are not connected by a USB cable.

IMPORTANT!

At some point during the installation procedure (step 6/7) you will need to connect the USB cable and turn the printer on.

For Windows Vista(64-bit)/Windows 7(64-bit), create a USB port ([Page 23](#)) in advance.

1

Insert the [RISO Printer Driver] CD-ROM into your computer's CD-ROM drive.

The installer is started. If the installer does not start up, double-click on the [Setup(.exe)] file in the folder below.

For Windows XP/Windows Vista(32-bit)/Windows 7(32-bit)/

Windows 8(32-bit)/Windows 8.1(32-bit):

(CD-ROM):[Windows 32-bit] folder

For Windows Vista(64-bit)/Windows 7(64-bit)/Windows 8(64-bit)/

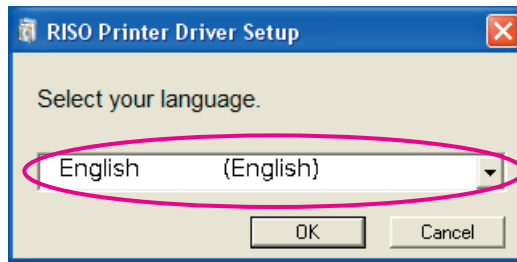
Windows 8.1(64-bit):

(CD-ROM):[Windows 64-bit] folder

NOTE If the [User Account Control] dialog appears, click [Allow] (for Windows Vista) or [Yes] (for Windows 7/Windows 8/Windows 8.1).

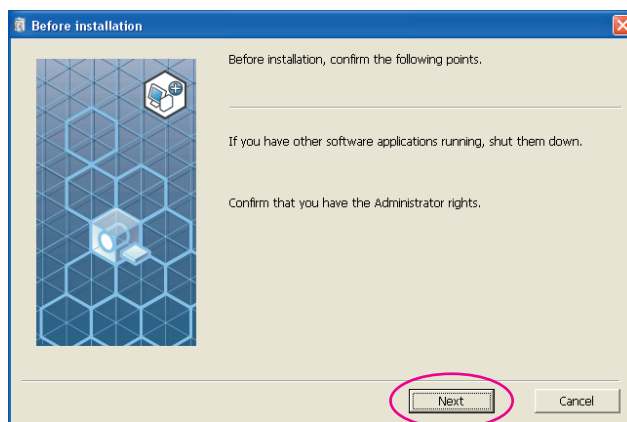
2

Select your language from the drop-down list, then click [OK].



3

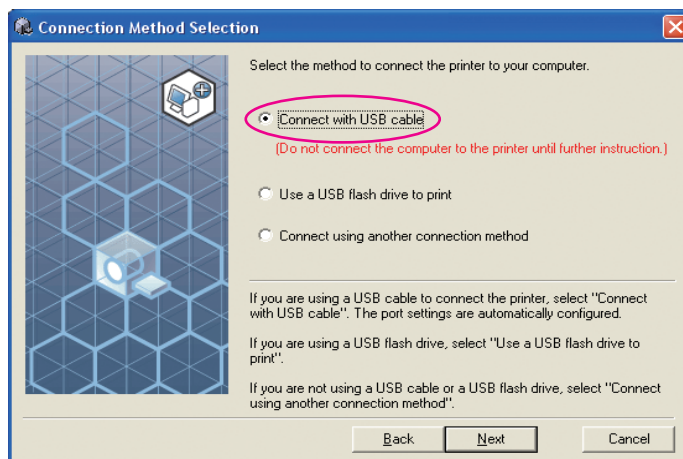
Click [Next].



For Windows Vista(64-bit) or Windows 7(64-bit), go to Step 17 (Page 16).

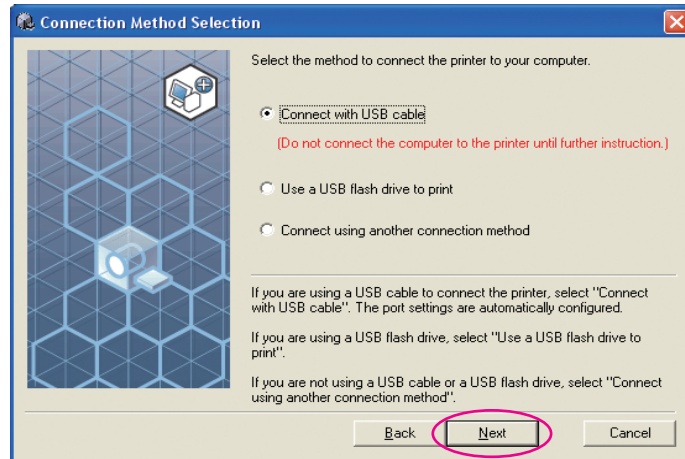
4

Select [Connect with USB cable].



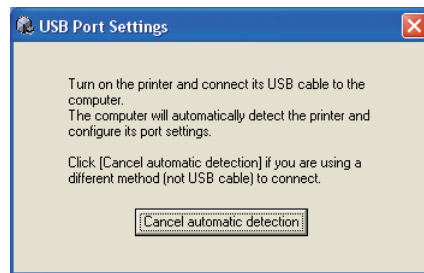
5

Click [Next].



For Windows 8/Windows 8.1, go to Step [25](#) (Page 19).

The [USB Port Settings] dialog box appears.

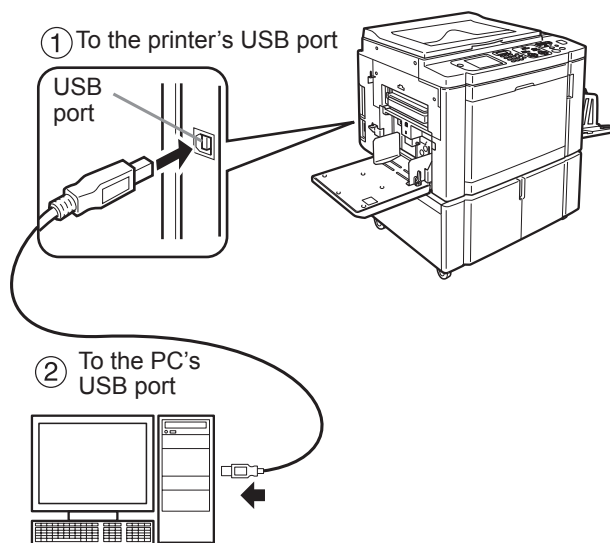


6

Turn on the RISO printer.

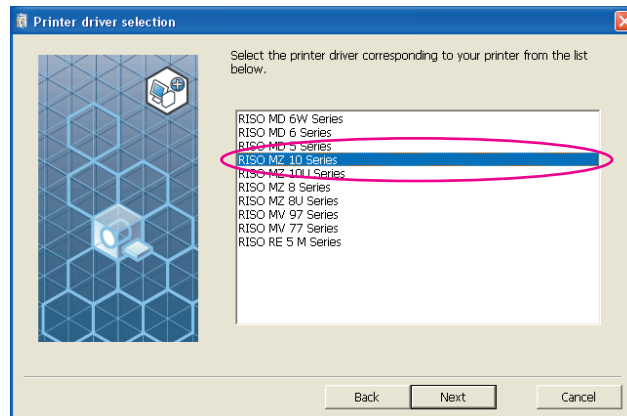
7

Connect the computer to the RISO printer with an USB cable (Hi-Speed USB, 3 m or less).



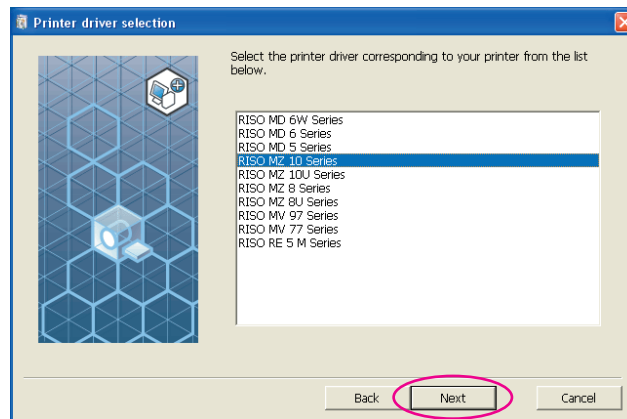
8

Select the printer name you just connected.

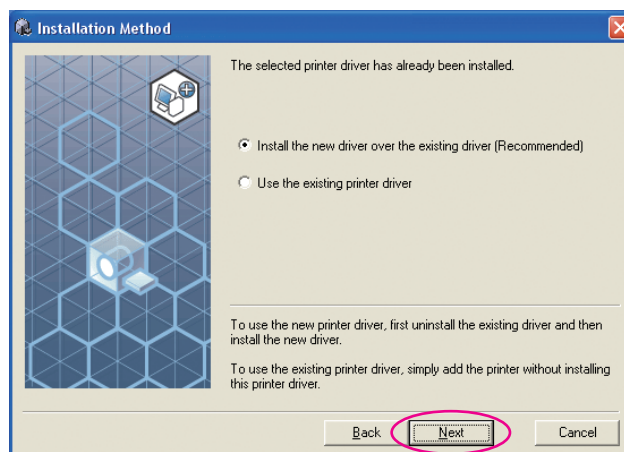


9

Click [Next].

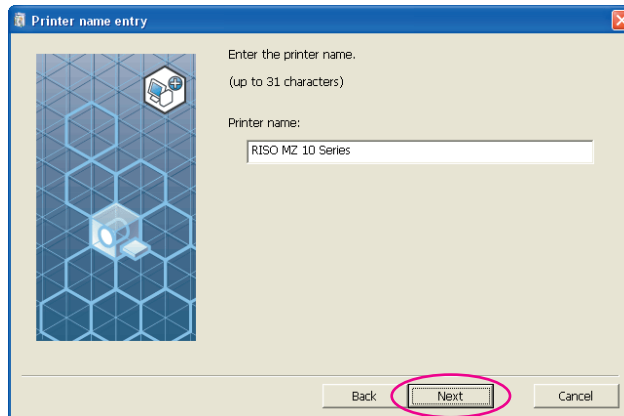


NOTE When selected Printer Driver has already been installed in Windows XP, [Installation Method] dialog appears. Click [Next].

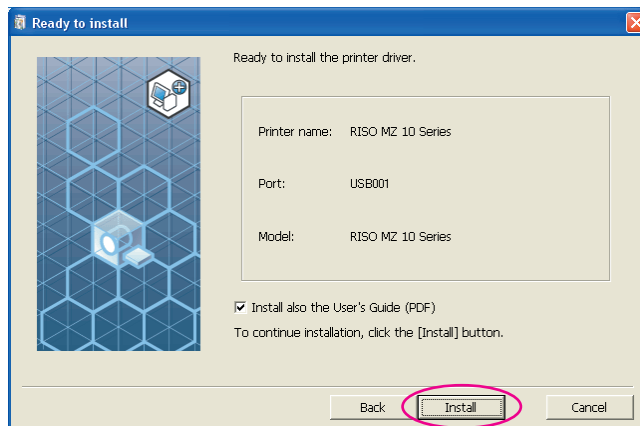


10**Click [Next].**

You can also change the name of the printer.

**11****Click [Install].**

When you place a checkmark in the [Install also the User's Guide (PDF)] checkbox, the User's Guide (PDF) will also be installed.

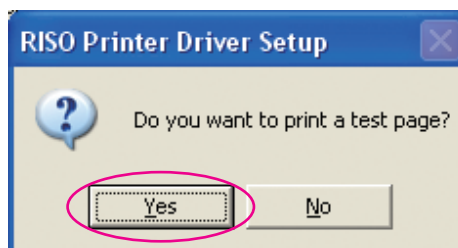


NOTE When the [Windows Logo Approval Test] (for Windows XP) or [Windows Security] (for Windows Vista/Windows 7) dialog appears, continue with installation.

12**[Do you want to print a test page?] appears, then click [Yes].**

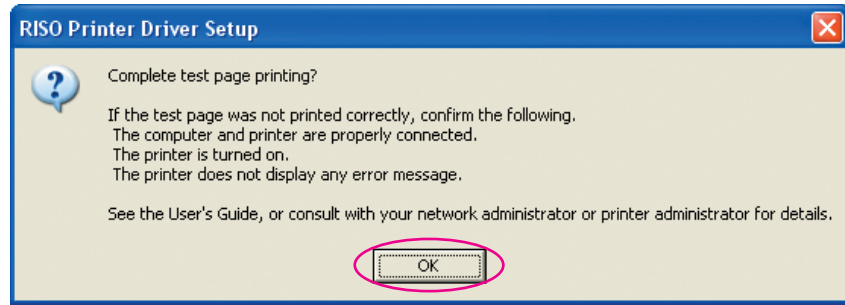
Set A4/Letter paper in the printer beforehand.

NOTE Load paper with the short edge first.



13

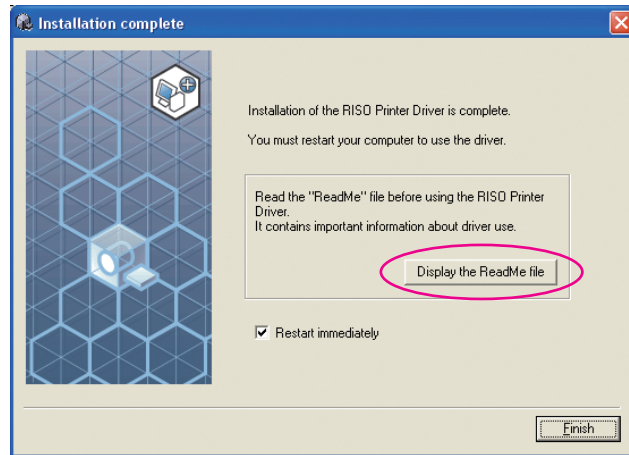
Check the test print was properly printed and click [OK].



14

Click [Display the ReadMe file].

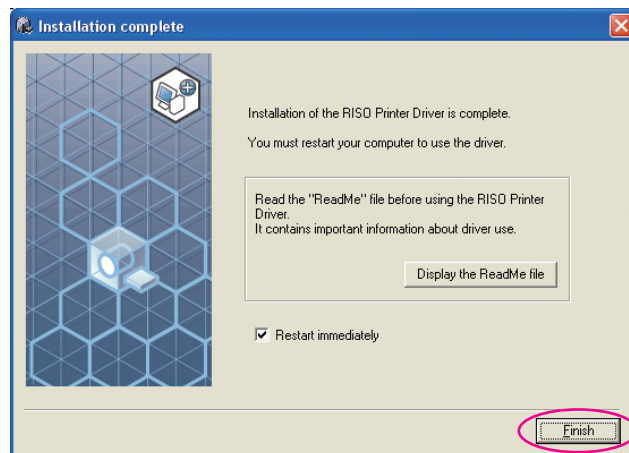
The ReadMe file is opened. Be sure to read all the instructions and notes on it.



15

Click [Finish].

Be sure to restart the computer before using the Printer Driver. If you have checked [Restart immediately], the computer will be shut down and restarted when you click [Finish].



NOTE When [Found New Hardware Wizard] is displayed, click [Cancel].

16

Then remove the [RISO Printer Driver] CD-ROM from the CD-ROM drive of your computer.

IMPORTANT!

Keep the removed CD-ROM at hand.

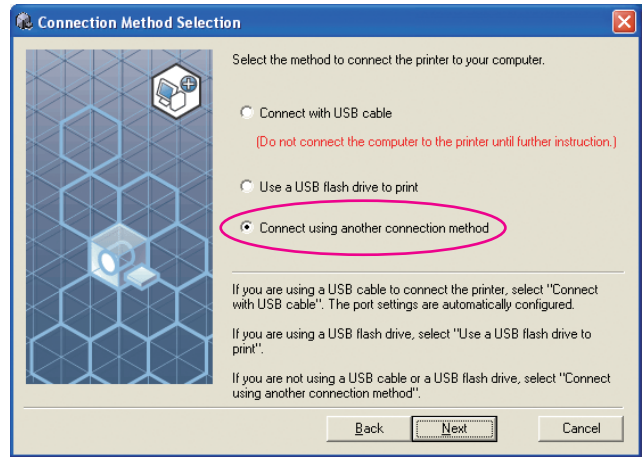
Printer driver installation is now completed.

If using Windows Vista(64-bit)/Windows 7(64-bit), associate USB Devices ([Page 24](#)) continuously.

For Windows Vista(64-bit) or Windows 7(64-bit)

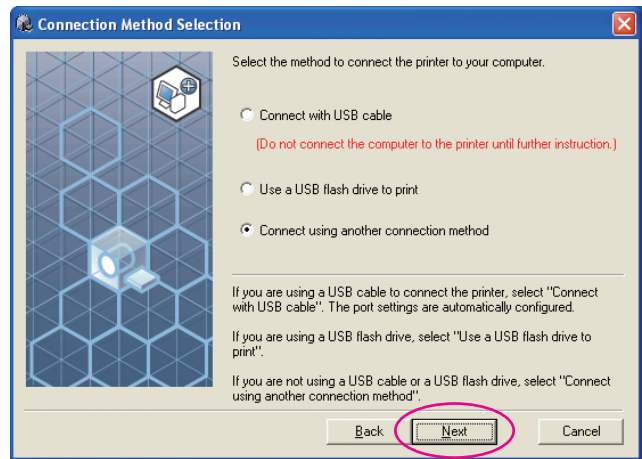
17

Select [Connect using another connection method].



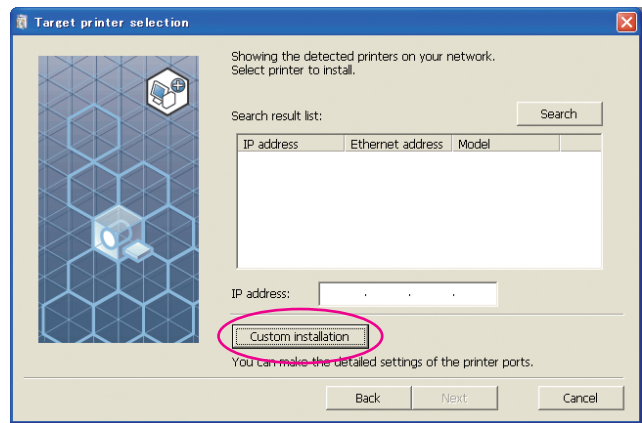
18

Click [Next].



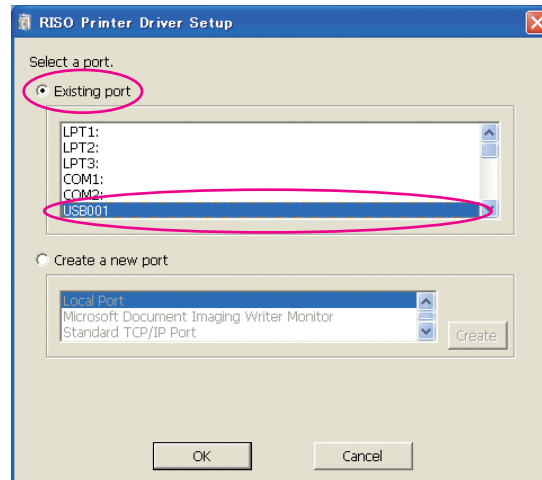
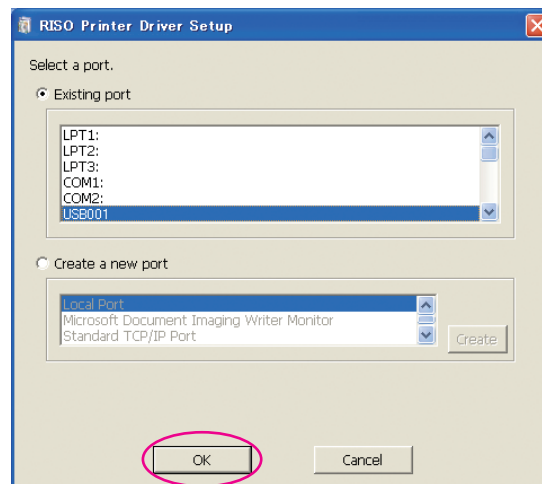
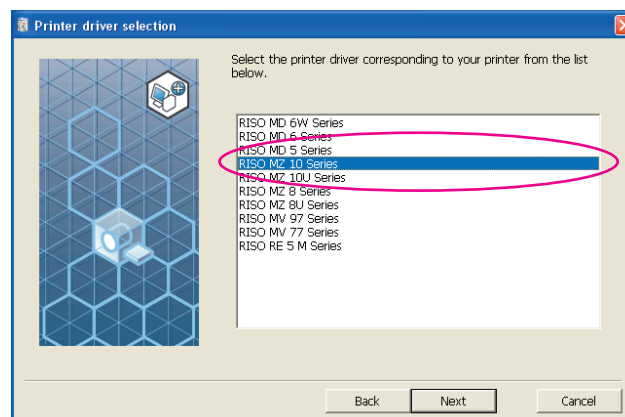
19

Click [Custom installation].



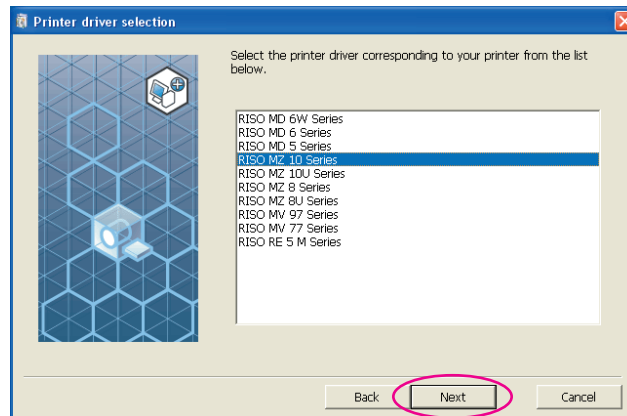
20**Select a USB port.**

Select [Existing port], and then [USB***].

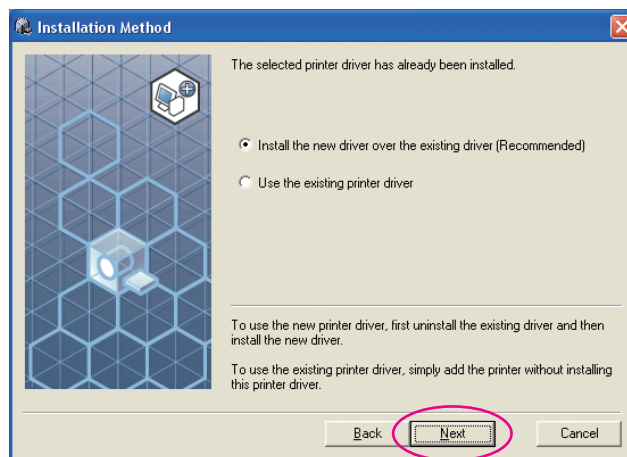
**21****Click [OK].****22****Select the printer name you just connected.**

23

Click [Next].



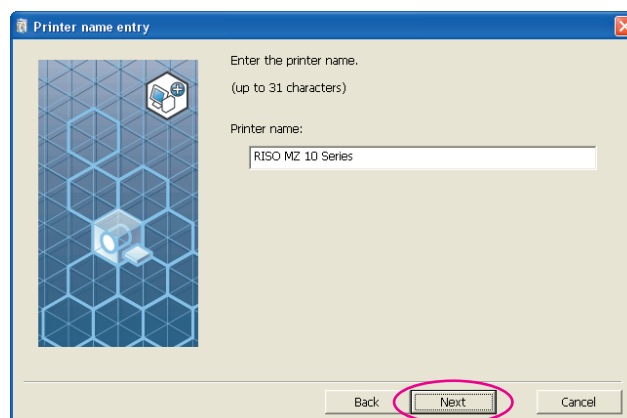
NOTE When selected Printer Driver has already been installed, [Installation Method] dialog appears. Click [Next].



24

Click [Next].

You can also change the name of the printer.

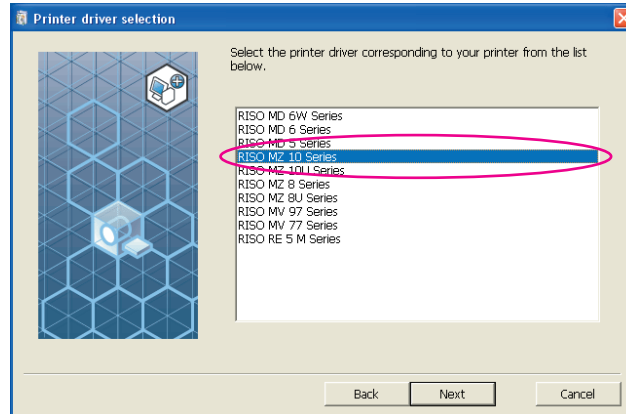


Return to Step 11 (Page 13).

For Windows 8/Windows 8.1

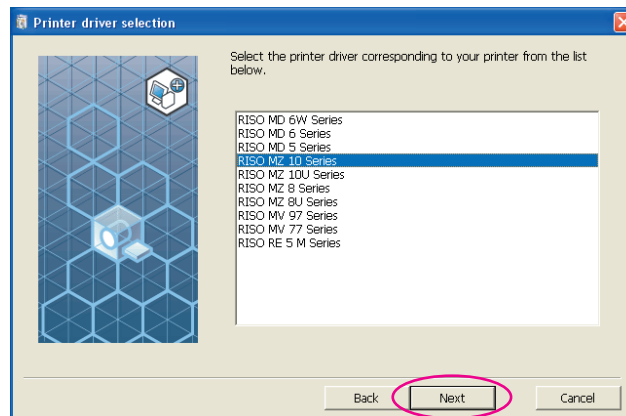
25

Select the printer name you just connected.



26

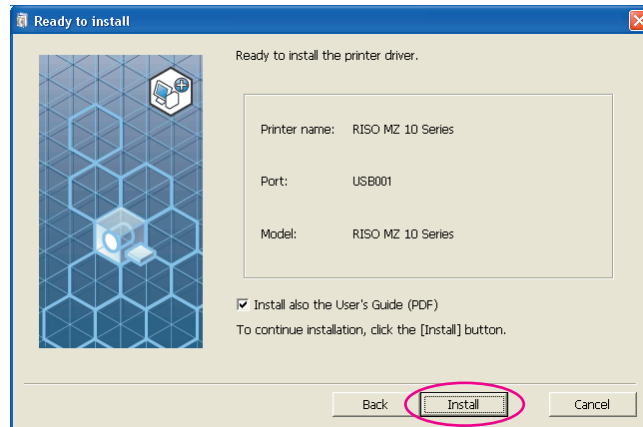
Click [Next].



27

Click [Install].

When you place a checkmark in the [Install also the User's Guide (PDF)] checkbox, the User's Guide (PDF) will also be installed.

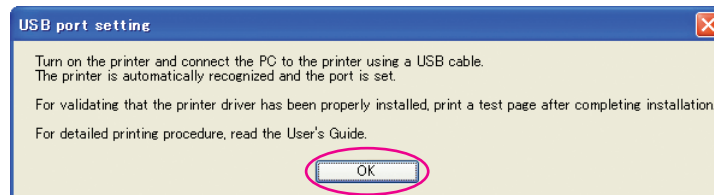


NOTE [Windows Security] dialog appears, continue with installation.

The [USB Port Settings] dialog box appears.

28

Click [OK].

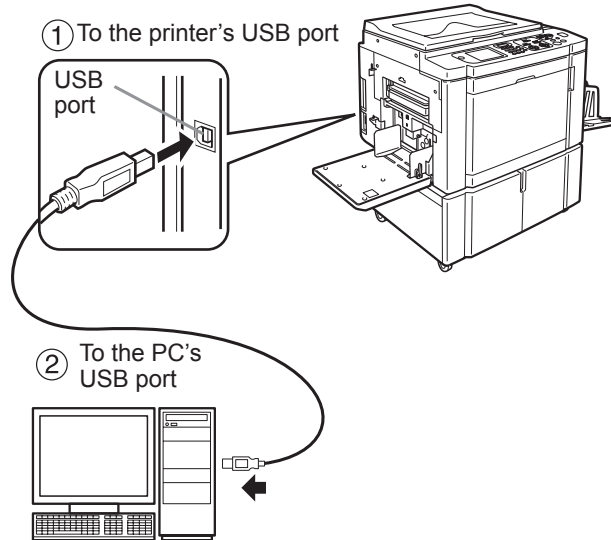


29

Turn on the RISO printer.

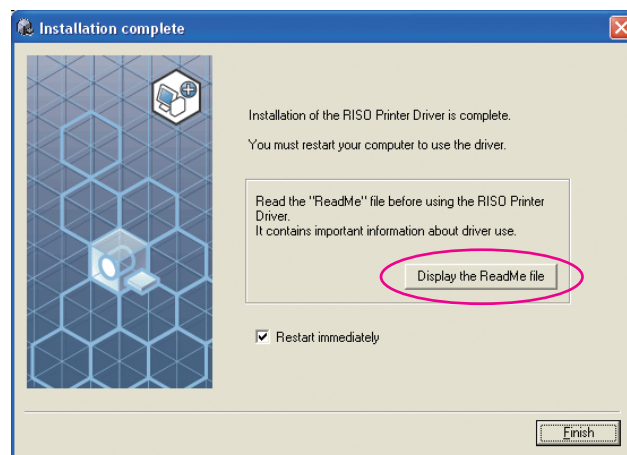
30

Connect the computer to the RISO printer with an USB cable (Hi-Speed USB, 3 m or less).

**31**

Click [Display the ReadMe file].

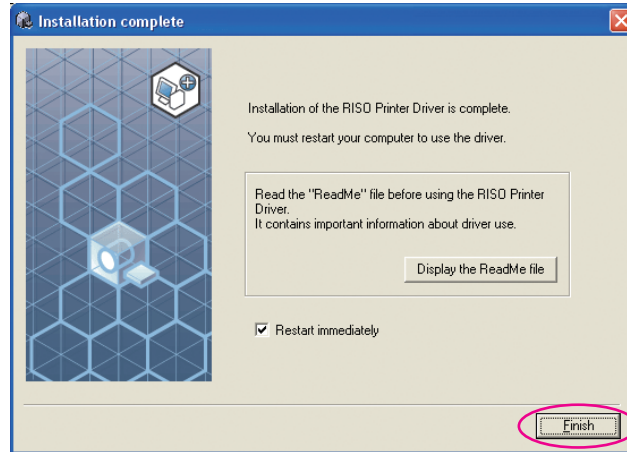
The ReadMe file is opened. Be sure to read all the instructions and notes on it.



32

Click [Finish].

Be sure to restart the computer before using the Printer Driver. If you have checked [Restart immediately], the computer will be shut down and restarted when you click [Finish].



33

Open the print folder.

Open the “Apps” screen and click [Control Panel]-[Hardware and Sound]-[Devices and Printers].

34

Open the properties of the printer to which the Printer Driver has been installed.

Right-click on the icon of the printer, and select [Printer Properties] in the displayed menu.

35

Click [Print Test Page].

36

When a message appears, wait for a few seconds and click [Close].

37

Then remove the [RISO Printer Driver] CD-ROM from the CD-ROM drive of your computer.

IMPORTANT!

Keep the removed CD-ROM at hand.

Printer driver installation is now completed.

Creating a USB port

To install the printer driver in Windows Vista(64-bit) or Windows 7(64-bit) with the USB cable, it is necessary to create a USB Port and associate USB Devices.

IMPORTANT!

Create a USB port before installing the printer driver.

1 Turn the power of the printer on, and connect the USB cable to the printer.

2 Start your computer.

3 Connect the USB cable to your computer.

A USB port is automatically created. Check the USB port in Step **4** and after.

IMPORTANT!

Make sure that the message “Device driver software was not successfully installed” appears. This message appears in the dialog box for Windows Vista and in the task tray of Windows 7.

NOTE When “Found New Hardware Wizard” appears in Windows Vista, select “I’ll recheck later.”

4 Open [Print Server Property].

For Windows Vista:

- ① Click on the [Start] icon-[Control Panel]-[Hardware and Sound] and [Printers] to open the [Printers] folder.
- ② Right-click on a blank area in the folder to display the menu and select [Run as administrator] - [Server properties] from the menu.

For Windows 7:

- ① Click on the [Start] icon-[Control Panel]-[Hardware and Sound] and [Devices and Printers] to open the [Devices and Printers] folder.
- ② Click on the existent printer and click [Print server properties] at the top of the window.

5 Click on the [Ports] tab and make sure that the [USB***] port is located in the [Ports on this server].

Record this port name because the name should be selected to install the printer driver.

6 Disconnect the USB cable from your computer.

USB Device Association

IMPORTANT!

Associate the USB device after installing the printer driver.

1

Connect the printer and your computer with a USB cable.

The USB device is automatically associated with your computer. Check the result of the USB device association in Step **2** and after.

2

Activate [Device Manager].

Click [Start] icon-[Control Panel]-[Hardware and Sound]-[Device Manager].

3

Click [View] in the menu and place a checkmark in the [Show hidden devices] checkbox.

4

Click [Printers] in the list and check that the newly installed printer is registered.

5

Open [Devices and Printers] and check that the newly installed printer is registered.

■ Network Connection

Connecting with PC

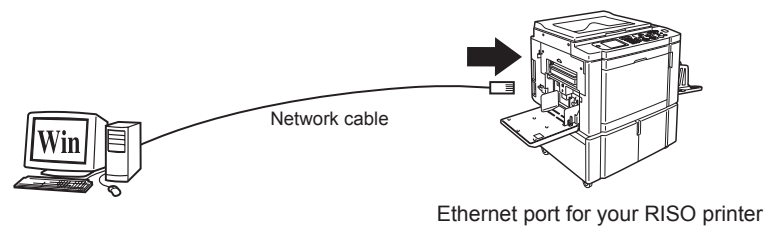
Optional network interface card, "RISO Network Card" is required when connecting the computer to the RISO printer through network to use as a network printer.

In advance, connect the RISO printer to the network and configure printer network settings (ex. IP address). For details, see RISO Network Card User's Guide (contained in RISO Network Card SOFTWARE CD-ROM). Use a commercially available Ethernet cable (10BASE-T or 100BASE-TX) appropriate for your network environment.

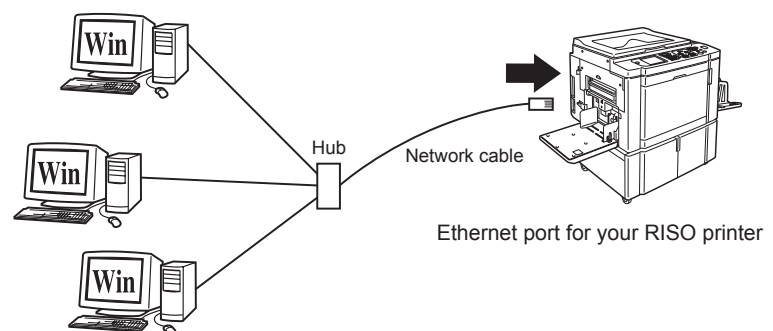
IMPORTANT!

Use an Ethernet cable specified with category 5 or more.

■ When your RISO printer is connected with one PC



■ When your RISO printer is connected on network



Installing the Printer Driver

This section describes how to install the RISO Printer Driver when the computer is connected to the RISO printer through network.
(Regarding the procedure for manual installation, see [page 93](#).)

IMPORTANT!

- You are required to have the administrator’s privilege to install the Printer Driver program in your computer.
- This Printer Driver does not support server OS or printer sharing.

1

Insert the [RISO Printer Driver] CD-ROM into your computer’s CD-ROM drive.

The installer is started. If the installer does not start up, double-click on the [Setup(.exe)] file in the folder below.

For Windows XP/Windows Vista(32-bit)/Windows 7(32-bit)/Windows 8(32-bit)/Windows 8.1(32-bit):

(CD-ROM):[Windows 32-bit] folder

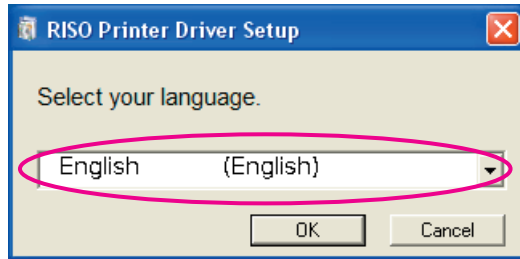
For Windows Vista(64-bit)/Windows 7(64-bit)/Windows 8(64-bit)/Windows 8.1(64-bit):

(CD-ROM):[Windows 64-bit] folder

NOTE If the [User Account Control] dialog appears, click [Allow] (for Windows Vista) or [Yes] (for Windows 7/Windows 8/Windows 8.1).

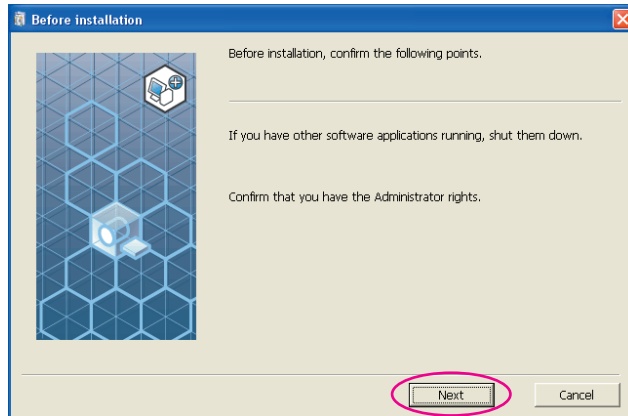
2

Select your language from the drop-down list, then click [OK].

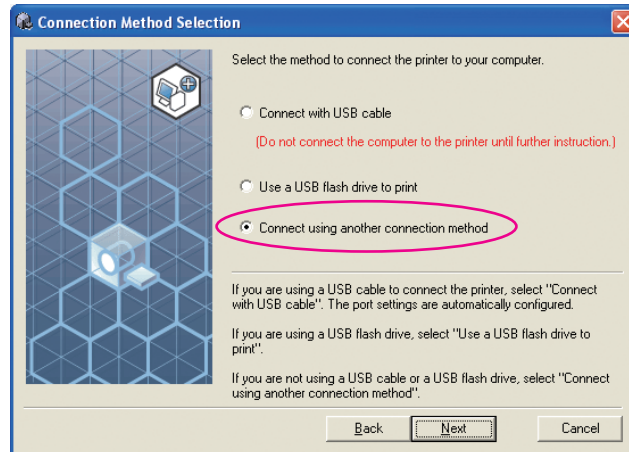


3

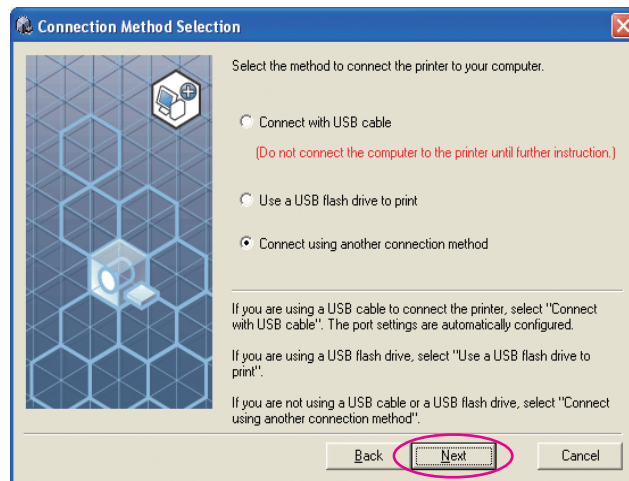
Click [Next].



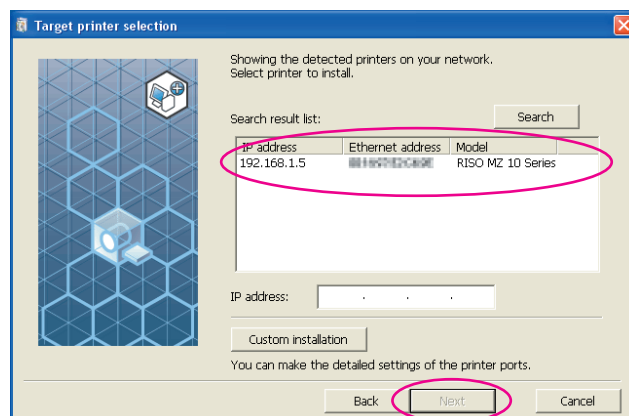
4

Select [Connect using another connection method].

5

Click [Next].

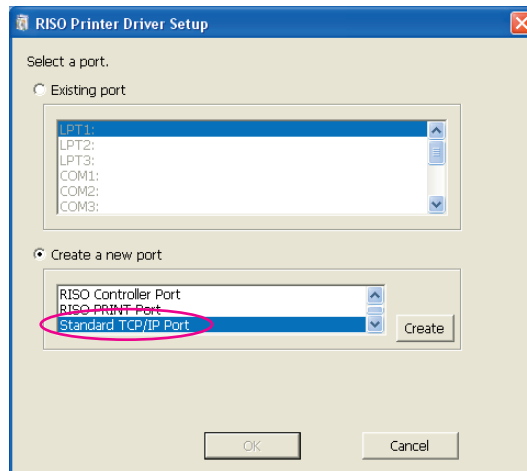
6

Select the printer and click [Next].

- NOTE**
- You can also enter the IP address manually.
 - When you set a transmission system or port optionally, click [Custom installation] and select an existing port or create a new port.

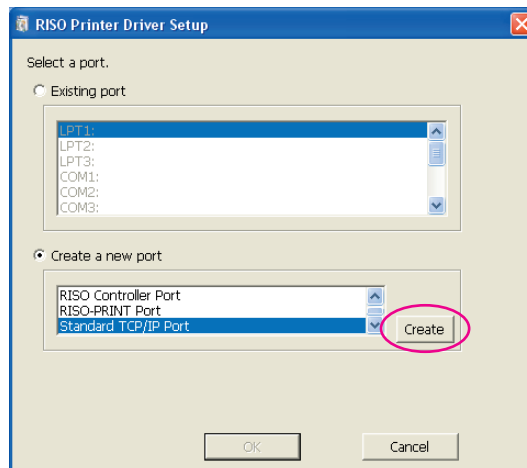
The following procedure shows how to create a Standard TCP/IP Port.

1) Select [Create a new port], and then [Standard TCP/IP Port].

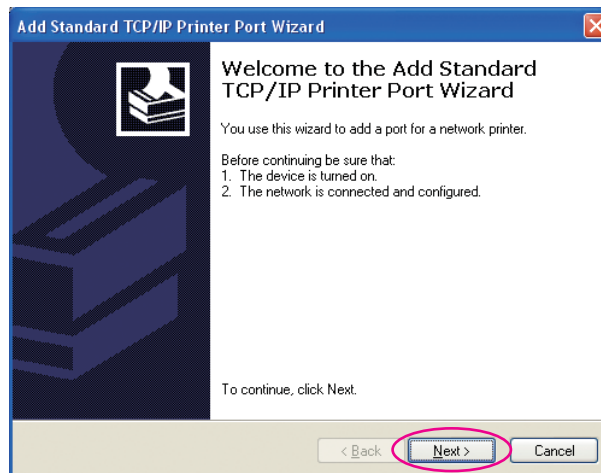


2) Click [Create].

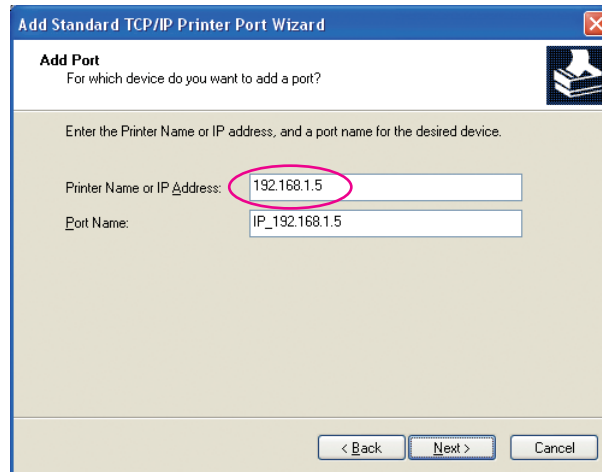
The [Add Standard TCP/IP Printer Port Wizard] dialog box appears.



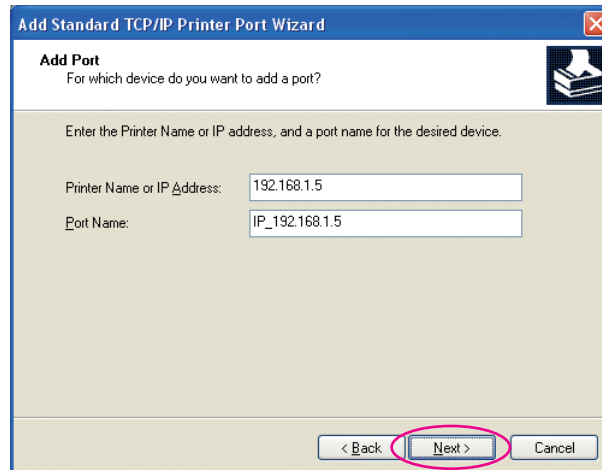
3) Click [Next].



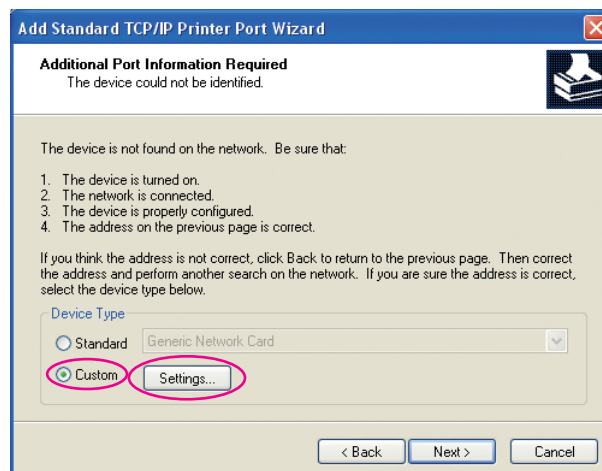
- 4) Enter the IP address of your printer.
Port name will be entered automatically.



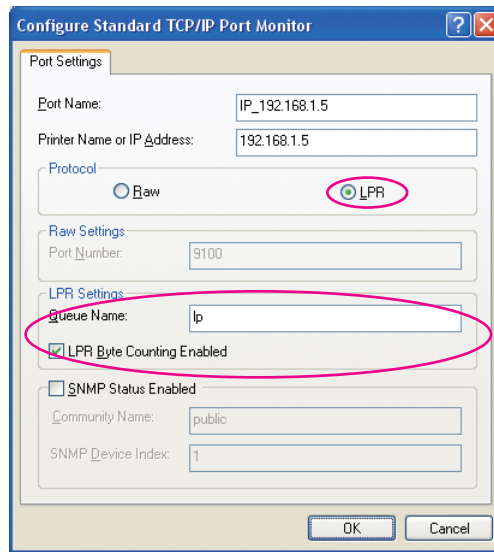
- 5) Click [Next].



- 6) Select [Custom] and click [Settings].



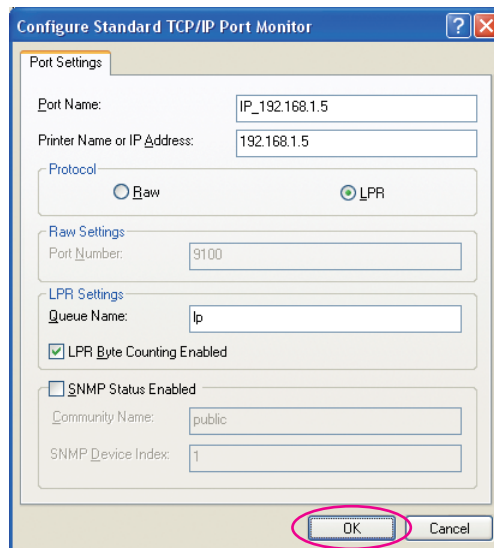
7) Select [LPR] for [Protocol], input “lp” as the [Queue Name] under [LPR settings], and place a checkmark in the [LPR Byte Counting Enabled] checkbox.



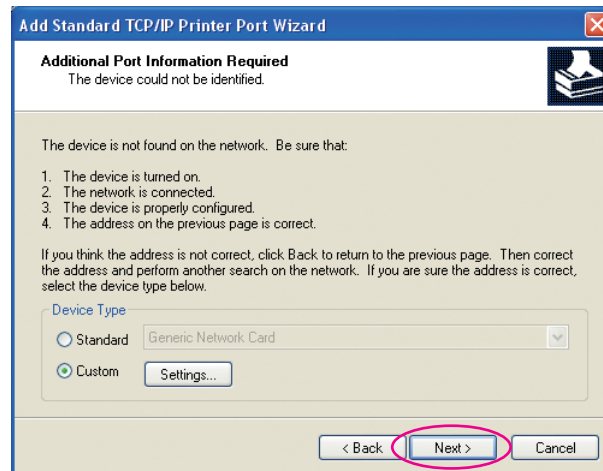
NOTE This installation procedure assumes that the RISO printer is connected to the network using the dedicated network interface card, RISO Network Card (option). When connecting to a commercial print server etc. on the network, refer to the instruction manual provided by the manufacturer. After the LPR function is added, your computer requires restarting. Therefore, be sure to store the necessary data in your computer before carrying out the operation. Follow the instruction manual of Windows XP/Windows Vista/Windows 7/Windows 8/Windows 8.1 or Help for details.

IMPORTANT!
The images may not be printed properly if [LPR Byte Counting Enabled] is not selected.

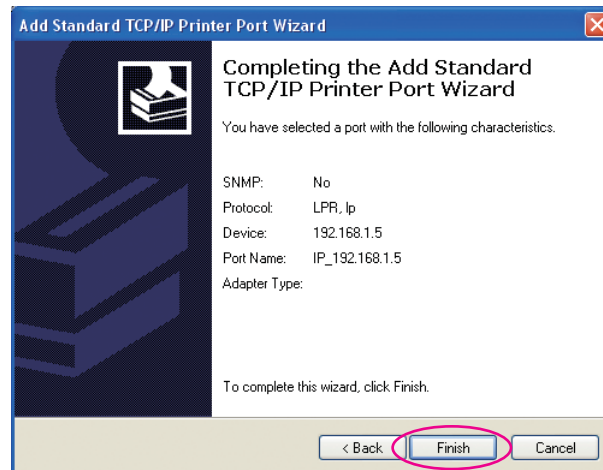
8) Click [OK].



9) Click [Next].

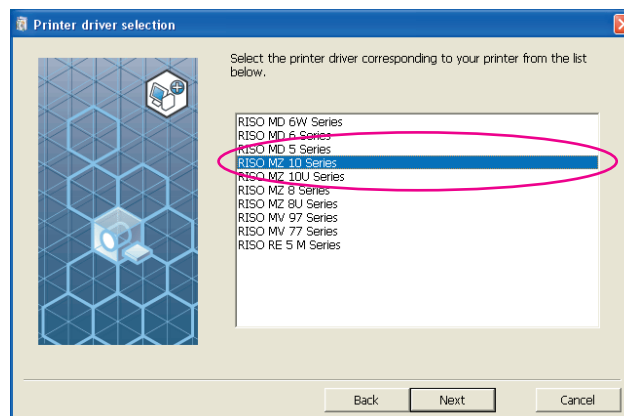


10) Click [Finish].



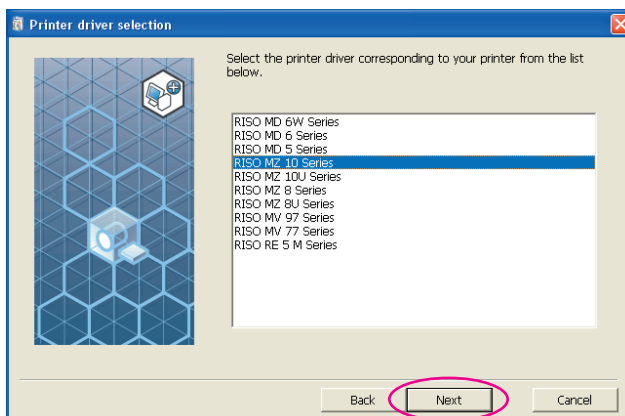
7

Select the printer name to use.

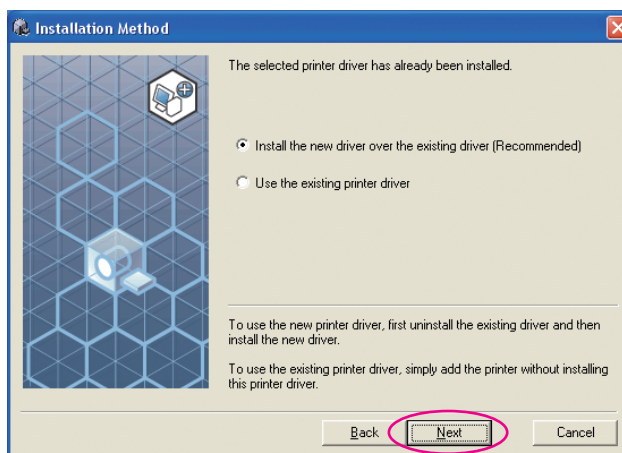


8

Click [Next].



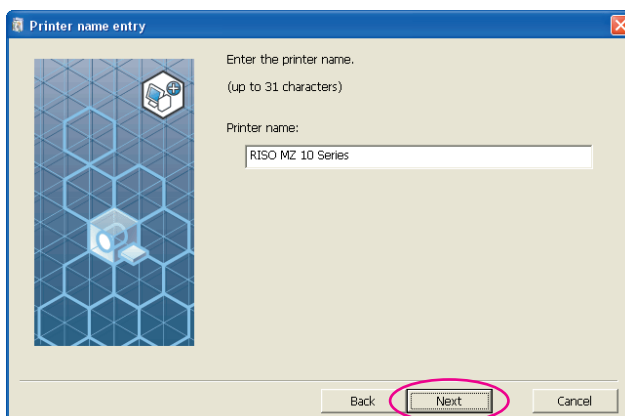
NOTE When selected Printer Driver has already been installed, [Installation Method] dialog appears. Click [Next].



9

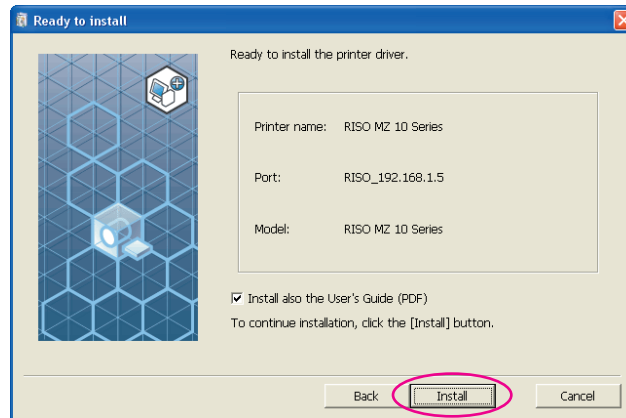
Click [Next].

You can also change the name of the printer.



10**Click [Install].**

When you place a checkmark in the [Install also the User's Guide (PDF)] checkbox, the User's Guide (PDF) will also be installed.

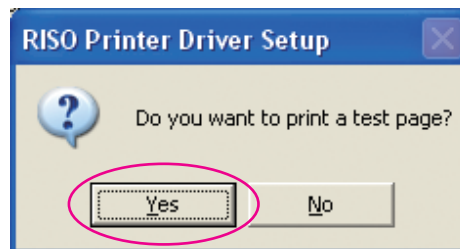
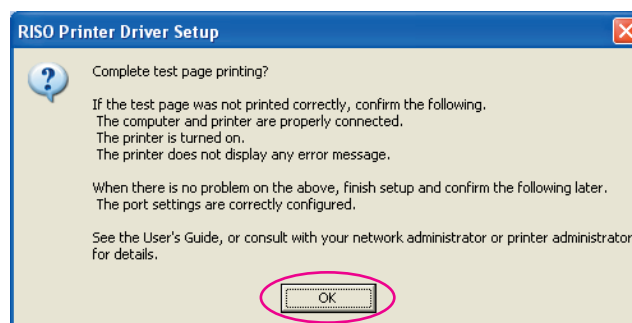


NOTE When the [Windows Logo Approval Test] (for Windows XP) or [Windows Security] (for Windows Vista/Windows 7/Windows 8/Windows 8.1) dialog appears, continue with installation.

11**[Do you want to print a test page?] appears, then click [Yes].**

Set A4/Letter paper in the printer beforehand.

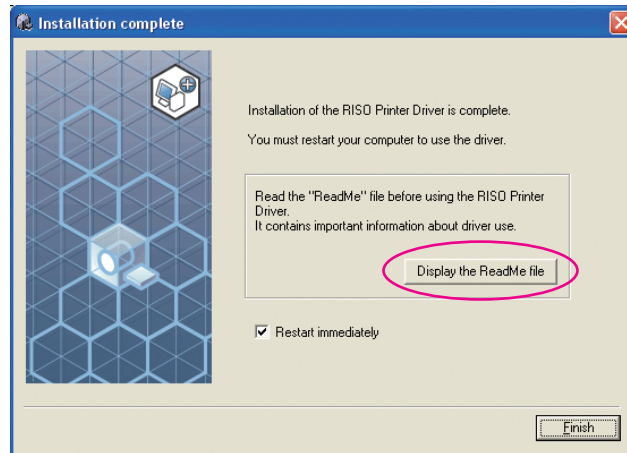
NOTE Load paper with the short edge first.

**12****Check the test print was properly printed and click [OK].**

13

Click [Display the ReadMe file].

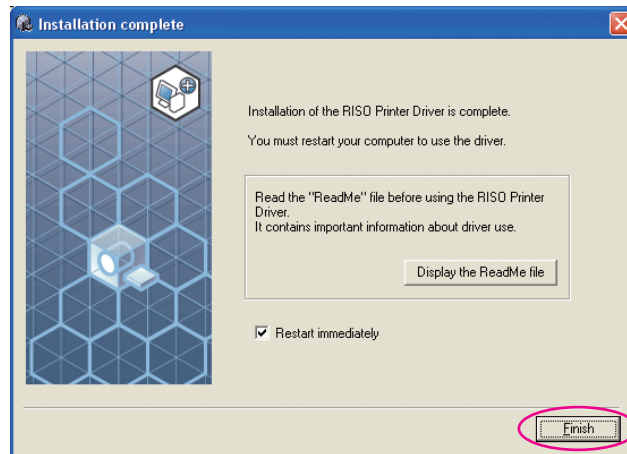
The ReadMe file is opened. Be sure to read all the instructions and notes on it.



14

Click [Finish].

Be sure to restart the computer before using the Printer Driver. If you have checked [Restart immediately], the computer will be shut down and restarted when you click [Finish].



15

Then remove the [RISO Printer Driver] CD-ROM from the CD-ROM drive of your computer.

IMPORTANT!
Keep the CD-ROM at hand.

■ USB Flash Drive Output

(Not available for EZ3x1/EZ2x1 series)

About USB Flash Drive

- Use USB Flash Drive compatible with Mass Storage Class. Depending on the type of USB Flash Drive, the Printer Driver may not work properly.
- When connecting or removing USB Flash Drive, insert it or pull it out slowly by using the correct method.
- When USB Flash Drive data is damaged by natural disaster or contingency, the data saved in the USB Flash Drive cannot be guaranteed. It is recommended to back up important data with your computer with which the data has been created.

Installing the USB flash-via-Printer Driver

This section describes how to install the USB flash-via-Printer Driver when using a USB Flash Drive to print.

(Regarding the procedure for manual installation, see [page 93](#).)

IMPORTANT!

- You are required to have the administrator's privilege to install the Printer Driver program in your computer.
- This Printer Driver does not support server OS or printer sharing.

1

Insert the [RISO Printer Driver] CD-ROM into your computer's CD-ROM drive.

The installer is started. If the installer does not start up, double-click on the [Setup(.exe)] file in the folder below.

For Windows XP/Windows Vista(32-bit)/Windows 7(32-bit)/

Windows 8(32-bit)/Windows 8.1(32-bit):

(CD-ROM):[Windows 32-bit] folder

For Windows Vista(64-bit)/Windows 7(64-bit)/Windows 8(64-bit)/

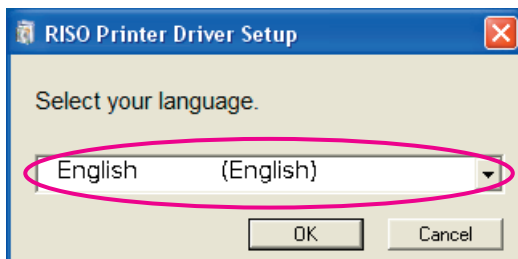
Windows 8.1(64-bit):

(CD-ROM):[Windows 64-bit] folder

NOTE If the [User Account Control] dialog appears, click [Allow] (for Windows Vista) or [Yes] (for Windows 7/Windows 8/Windows 8.1).

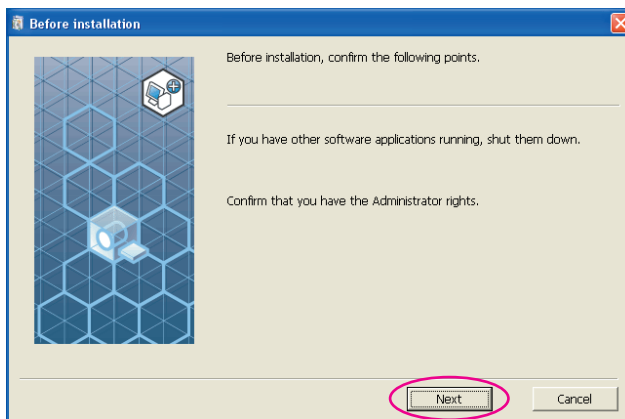
2

Select your language from the drop-down list, then click [OK].



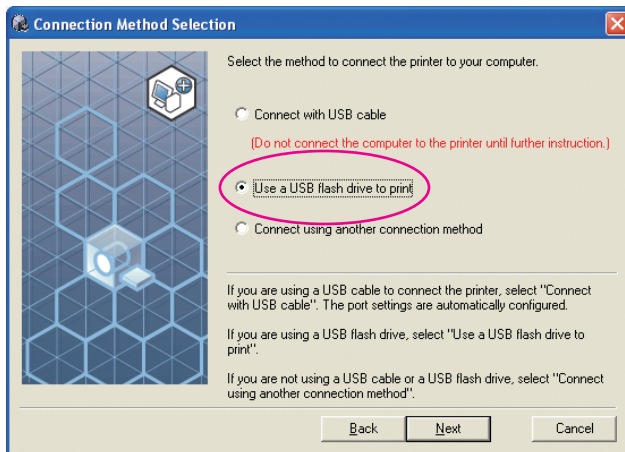
3

Click [Next].



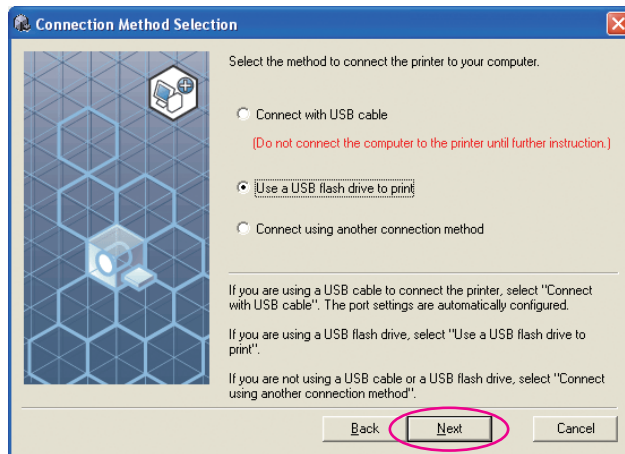
4

Select [Use a USB flash drive to print].



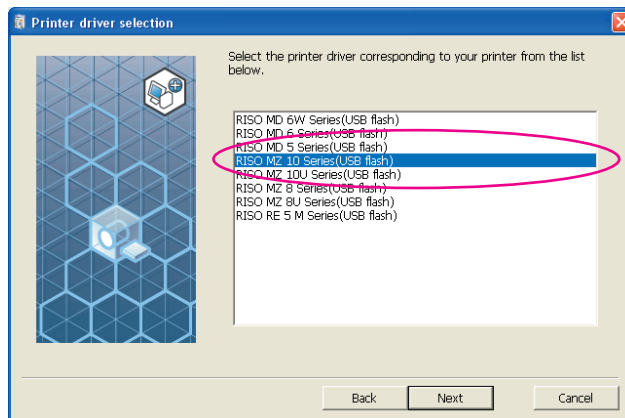
5

Click [Next].



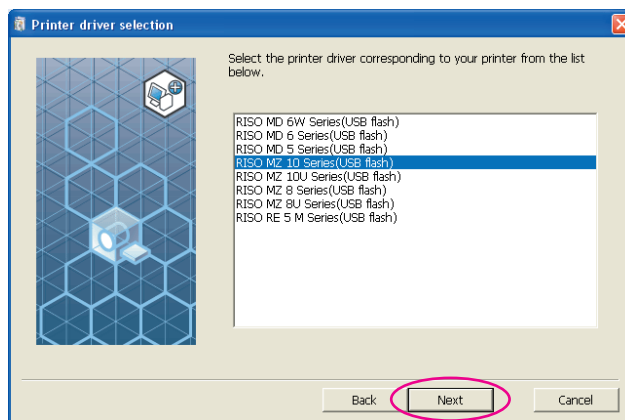
6

Select the printer name that has the part “USB flash” at the end.

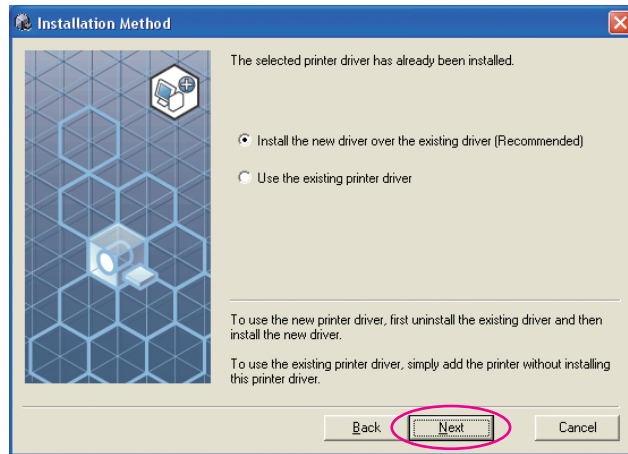


7

Click [Next].



NOTE When the selected Printer Driver is already installed, “Installation Method” dialog box appears, click [Next].

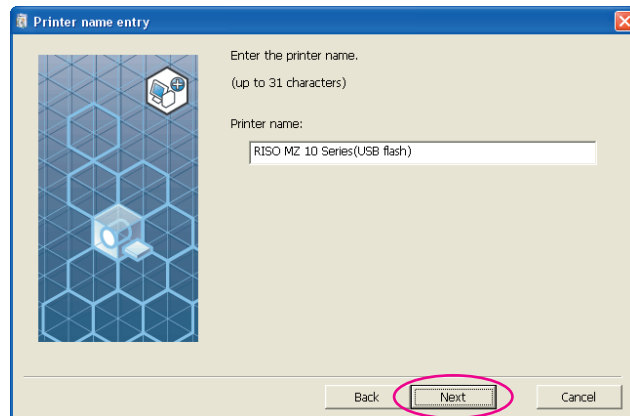


8

Click [Next].

You can also change the printer name.

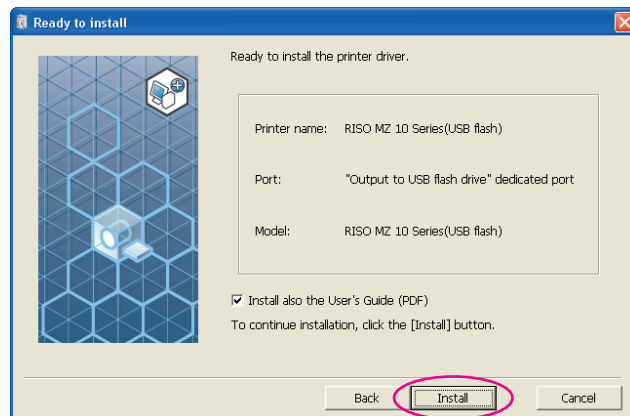
NOTE When changing the printer’s name, we recommend to leave (USB flash) in the name.



9

Click [Install].

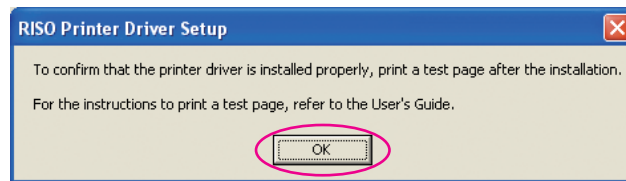
When you place a checkmark in the [Install also the User’s Guide (PDF)] checkbox, the User’s Guide (PDF) will also be installed.



NOTE When the [Windows Logo Approval Test] (for Windows XP) or [Windows Security] (for Windows Vista/Windows 7/Windows 8/Windows 8.1) dialog appears, continue with installation.

10

The following message appears, click [OK].

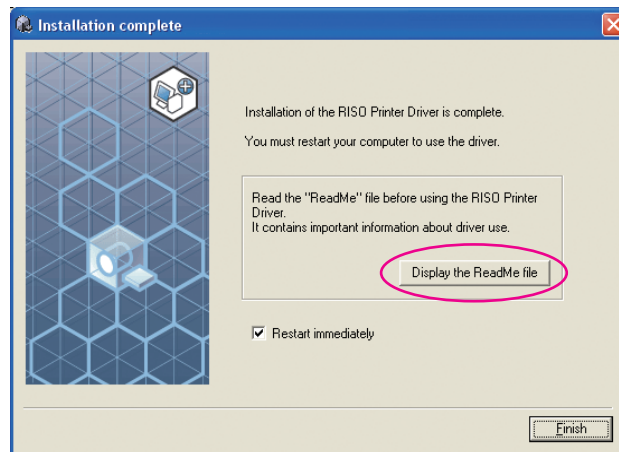


NOTE Please refer to “Create a Folder” and “Printing a test page” for output of test page on USB Flash Drive.

11

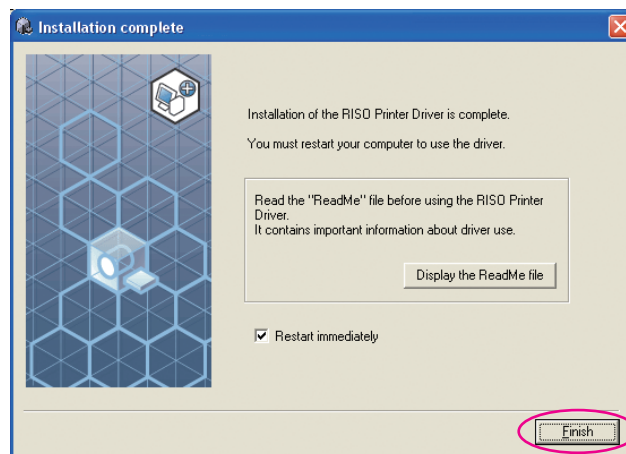
Click [Display the ReadMe file].

The ReadMe file is opened. Be sure to read all the instructions and notes on it.

**12**

Click [Finish].

Be sure to restart the computer before using the Printer Driver. If you have checked [Restart immediately], the computer will be shut down and restarted when you click [Finish].



13

Then remove the [RISO Printer Driver] CD-ROM from the CD-ROM drive of your computer.

IMPORTANT!

Keep the removed CD-ROM at hand.

Printer driver installation is now completed.

Create a dedicated folder in USB Flash Drive continuously. ([Page 41](#))

Create a Folder

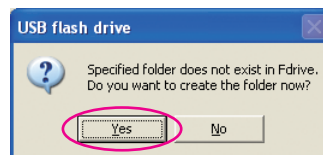
The procedure of creating a dedicated folder in USB Flash Drive is described here.

IMPORTANT!

When printing by using USB Flash Drive, be sure to create a dedicated folder in USB Flash Drive. Printing is disabled from the USB Flash Drive for which a dedicated folder has not been created.

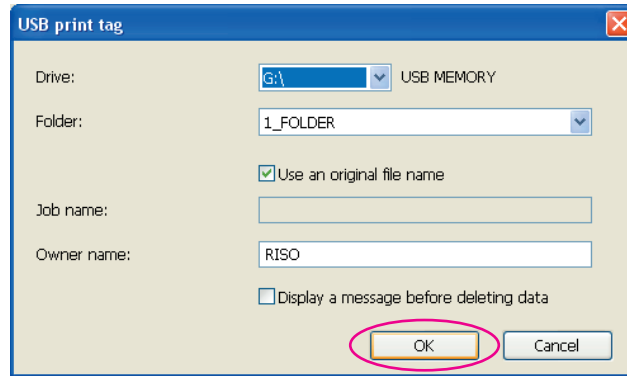
NOTE Instead of the following procedure, you can create a dedicated folder by connecting USB Flash Drive to the printer.

- 1** **Connect the USB Flash Drive to the computer.**
- 2** **Display the [Print] dialog box.**
Open the original data to print on your computer, select [Print] from the [File] menu.
- 3** **Select the printer to which the Printer Driver has been installed.**
Be sure to select the USB flash-via-Printer Driver.
- 4** **Click [Properties].**
- 5** **Check that [USB print] has been selected in [Output], and click [Details].**
- 6** **When a message appears, click [Yes].**
The dedicated folder is created in the USB Flash Drive.



7

Click [OK].



Next, print a test page.

IMPORTANT!

When changing the name of the folders in USB Flash Drive or moving the original data, use the RISO USB PRINT MANAGER. For details, see the “RISO Utility Software User’s Guide”.

Printing a test page

This section describes the procedures for printing a test page by using the USB flash-via-Printer Driver.

IMPORTANT!

Use the USB Flash Drive for which a dedicated folder (Page 41) has been created in advance.

1

Open the print folder.

For Windows XP:

Select [Printers and Faxes] from the [Start] menu and open the [Printers and Faxes] folder.

For Windows Vista:

Click on the [Start] icon-[Control Panel]-[Hardware and Sound]-[Printers] and open the [Printers] folder.

For Windows 7:

Click on the [Start] icon-[Control Panel]-[Hardware and Sound]-[Devices and Printers] and open the [Devices and Printers] folder.

For Windows 8/Windows 8.1:

Open the “Apps” screen and click [Control Panel]-[Hardware and Sound]-[Devices and Printers] and open the [Devices and Printers] folder.

2

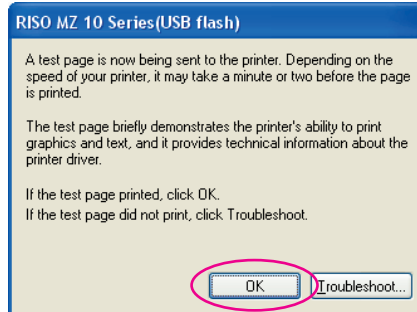
Open the properties of the printer to which the USB flash-via-Printer Driver has been installed.

Right-click on the icon of the printer (USB flash), and select [Properties] (for Windows XP/Windows Vista) or [Printer Properties] (for Windows 7/Windows 8/Windows 8.1) in the displayed menu.

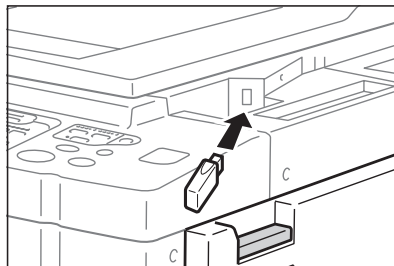
3 Click [Print Test Page].

4 When a message appears, wait for a few seconds and click [OK].

The data of the test page is saved in USB Flash Drive.

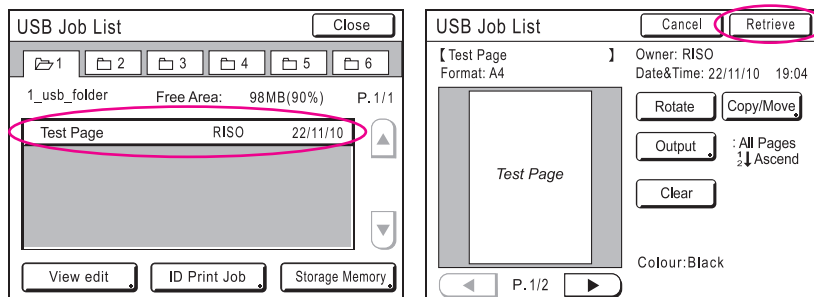


5 Remove the USB Flash Drive from your computer, and connect it to the printer.



6 On the touch panel of the printer, touch [USB Job List].

7 Select [Test Page] of [1_usb_folder], and touch [Retrieve].



8 Press the Start key.

Set A4/Letter paper in the printer beforehand.

A test page is printed.

NOTE Load paper with the short edge first.

Working with the Printer Driver

■ Changing the Printer Driver	
Configuration	45
■ Sending and Printing Data	49
■ Setting the Print Conditions	53
[Basic] Tab	54
[Layout] Tab	59
[Coloring] Tab	63
[Image] Tab	68
[Advanced] Tab	71
[Option] Tab	75
[About] Tab	77
■ Creating a RISORINC-format file	78
Creating RISORINC Files When Using the [Layout] Tab Setting	80

■ Changing the Printer Driver Configuration

For customized use, register optional devices, frequently-used custom paper size, print color, and color information. If you do not change the Printer Driver configuration, you will not be able to select the corresponding option when specifying the print conditions of your print job.

NOTE The screen shots of the Printer Driver shown here are taken from Printer Driver. (Not USB flash-via-Printer Driver)

1

Open the printer folder.

For Windows XP:

Select [Printers and Faxes] from the [Start] menu and open the [Printers and Faxes] folder.

For Windows Vista:

Click on the [Start] icon-[Control Panel]-[Hardware and Sound]-[Printers] and open the [Printers] folder.

For Windows 7:

Click on the [Start] icon-[Control Panel]-[Hardware and Sound]-[Devices and Printers] and open the [Devices and Printers] folder.

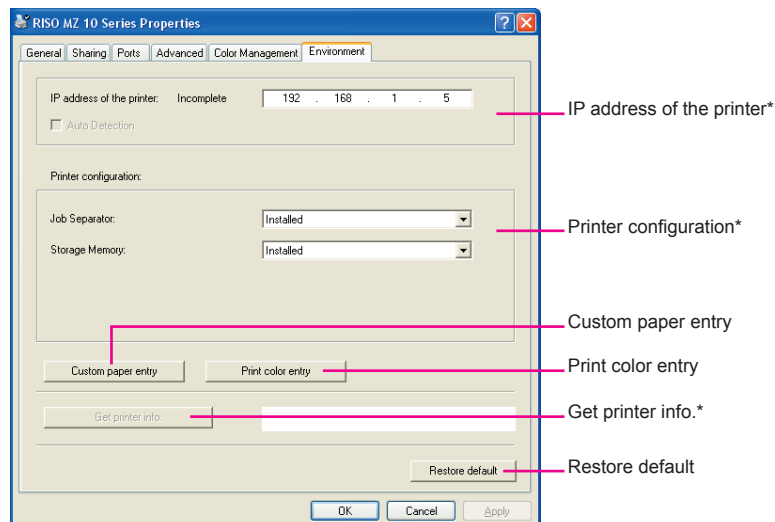
For Windows 8/Windows 8.1:

Open the “Apps” screen and click [Control Panel]-[Hardware and Sound]-[Devices and Printers] and open the [Devices and Printers] folder.

2

Open the [Environment] tab of the [Properties] dialog box.

Click the right-hand mouse key on the corresponding RISO printer icon in the printer folder and select [Properties] (for Windows XP/Windows Vista) or [Printer properties] (for Windows 7/Windows 8/Windows 8.1) in the displayed menu. Then click [Environment] in the [Properties] dialog box.



* [IP address of the printer], [Storage Memory] under [Printer configuration] and [Get printer info.] do not appear in the USB flash-via-Printer Driver.

3

Register the options if needed.

● Registering the IP address (Only in the case of network connection)

Make settings for acquiring the printer information (ink colors and optional devices).

IP Address

Enter the IP address of your RISO printer which is connected.

Auto Detection

Check box selected : Detection of the color information of the print color mounted on the printer is made every time you open the printer's properties to reflect the information on the [Color Label] for the Printer Driver.

For printing process without opening the printer's properties, detection of color information is made prior to printing process, and the data is output with the print color mounted on the printer by temporarily reflecting the printer drive settings.

Check box not selected : Color information is updated only when you click [Refresh] of the [Image] tab (for the mono-color printers) or [Coloring] tab (for the dual-color printers).

● Registering optional devices

Select [Installed] when the optional devices are connected.

Sorter

Select your sorter.

Job Separator

Select [Installed] if your RISO printer is equipped with the Job Separator.

Storage Memory (USB flash-via-Printer Driver is not available)

Select [Installed] if your RISO printer is equipped with the Document Storage Card.

● Registering Custom Paper Size as Standard

You can register custom paper sizes as standard in the [Custom paper entry] dialog box, which can be opened by clicking [Custom paper entry] in the [Environment] tab of the [Properties] dialog box. The custom paper sizes can be named and displayed in the [Original size] of the [Basic] tab.

1) Click [Custom paper entry] to display the [Custom paper entry] dialog box.

2) Enter the width, length and name and click [Add].

The registered name appears in the dialog box.

- NOTE**
- The length of the name can be up to 30 characters.
 - You can change the unit of length from “mm” to “inch”.

Custom paper entry

Width: 210 mm [10 - 340]

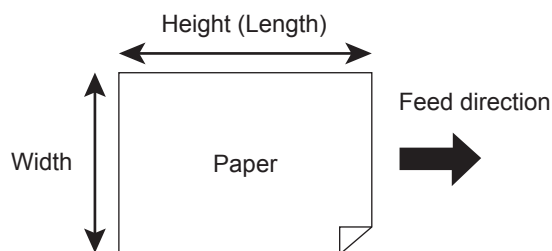
Length: 297 mm [10 - 440]

Name: A4 210 x 297 mm

Buttons: Add, Clear, Move Up, Move Down, Import, Export, Close

List of paper sizes:

- C4 229 x 324 mm
- C5 162 x 229 mm
- C5-R 229 x 162 mm
- C6 114 x 162 mm
- DL-R 110 x 220 mm
- Executive 190 x 254 mm
- Executive-R 254 x 190 mm
- Envelope 9 x 12 inch
- Envelope 10 x 13 inch
- No.10 envelope 4.13 x 9.5 inch
- 8K 271 x 390 mm
- 16K 195 x 271 mm
- 16K-R 271 x 195 mm

**3) Click [Close] in the [Custom paper entry] dialog box.****IMPORTANT!**

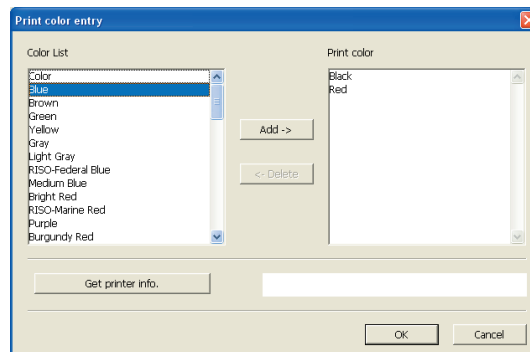
Even if you use the paper that are registered in the Custom paper entry, it may not pass through the machine depending on such factors as the paper quality, ambient conditions and storage conditions.

- NOTE**
- You can save the information of your customer paper size as a Custom paper entry information file (.udp extension) by clicking [Export]. If you want to register the custom paper size from the Custom Paper Entry information file, click [Import] to select the file.
 - When registering the paper using with horizontal direction, enter the size of long edge in [Width] and enter the size of short edge in [Length].
 - Entry of the name and dimensions will help you when you select the paper size. The length of the name can be up to 30 characters.
 - The registrable paper size varies with the printer you use. For details, see the user's guide of your printer.
 - When deleting a custom paper size, select the corresponding name from the list and click [Clear].

● **Register the Print Colors**

Register the all print colors which your RISO printer can provide. The print colors registered are displayed in the [Color] drop-down list in the [Basic] tab (See [page 54](#)).

- 1) Click [Print color entry] to open the [Print color entry] dialog box.
- 2) Select the colors you have on your RISO printer from the [Color List] in the [Print color entry] dialog box, and click [Add].



- 3) Click [OK].

NOTE Clicking [Get printer info.] when the IP address has been set acquires the ink color and adds it to the list. (Only in the case of a network connection)

● **Acquiring information from the printer (Only in the case of network connection)**

Clicking [Get printer info.] when the printer IP address has been registered acquires the printer information (ink colors and optional devices) and reflects it in the settings.

● **Changing the settings back to their defaults**

Change the settings under the [Environment] tab back to normal.

4

Complete the setting.

Click [OK] on the [Environment] tab.

■ Sending and Printing Data

Follow the procedures given below to print out document data directly on your RISO printer.

If the corresponding RISO Printer Driver has not been installed in your computer yet, install it first, referring to the section “Installing the Printer Driver” on [page 8](#).

IMPORTANT!

- The maximum print area is different depending on the model of RISO printer. If you want to know the maximum print area of your document, consult the user’s guide of your RISO printer.
- For other limitations, also read the user’s guide of your RISO printer.

1

Turn on your RISO printer and load paper.

Load the proper paper to be printed.

2

Specify the print job in the [Print] dialog box.

Turn on your computer and start Windows.

Open the document file to be printed, select [Print] in the [File] menu to open the [Print] dialog box.

3

Select a Printer Driver.

Select a Printer Driver that supports your printer from the [Printer Name] list.

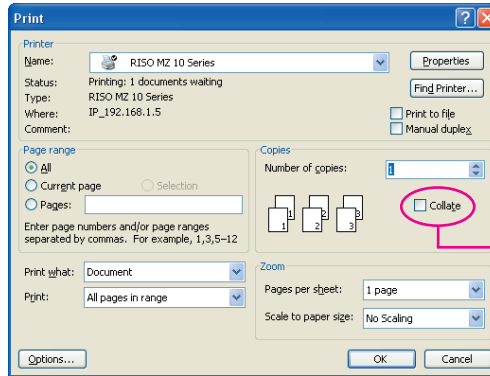
To print from a USB Flash Drive, select [Printer Name (USB flash)] and connect the USB Flash Drive to your computer. (Not available for EZ3x1/EZ2x1 series)

4

Check print conditions.

- Specify the number of copies to be printed within the following range : 1 to 9,999.
- Never fail to deselect the [Collate] box. If it is selected, the master-making operation will be repeated for every copy.

The displayed items in the [Print] dialog box vary depending on the application software.



Remove the check mark for [Collate].

IMPORTANT!

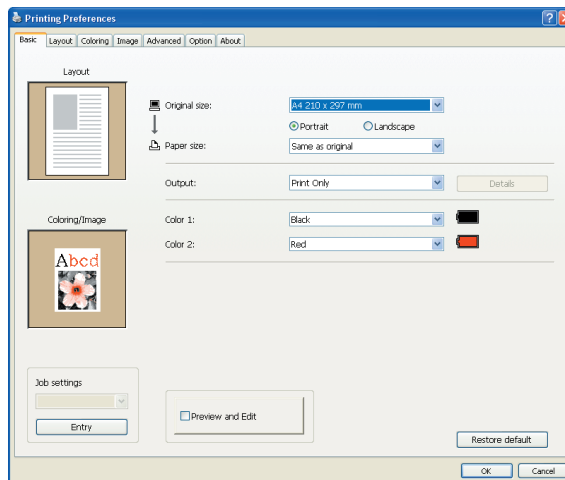
If you want to print a file consisting of several pages, and the file include different paper sizes or page directions, printing may fail when you choose [All] for the paper range. Specify page numbers to print for those of same page size or direction.

If you want to set additional print conditions for the current print job ; Open the [Properties] dialog box by clicking [Properties] in the [Print] dialog box.

IMPORTANT!

Some printer settings are not available depending on access privileges.

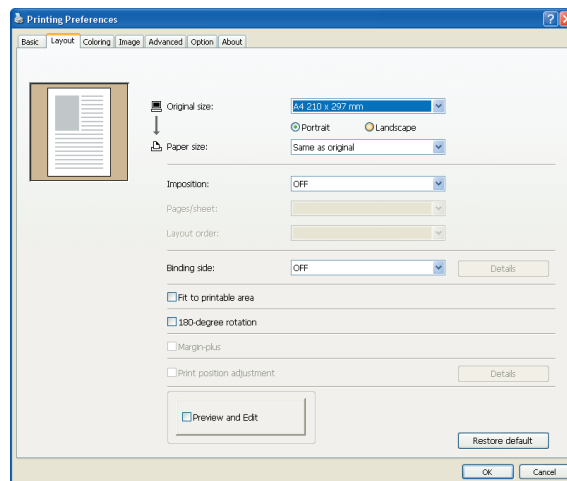
[Basic] Tab (refer to [page 54](#) for detailed settings)



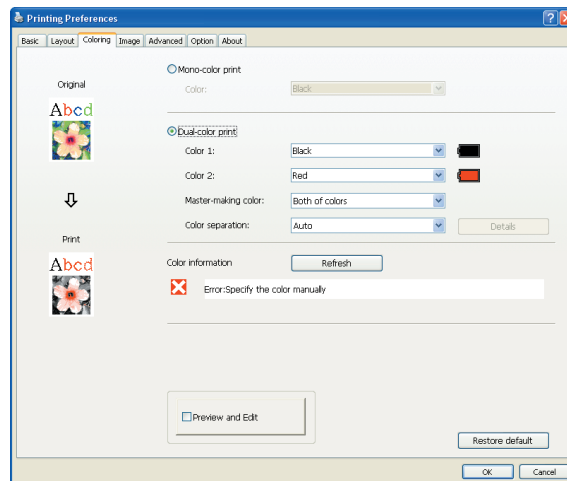
IMPORTANT!

Settings of paper size and page direction for this tab should be identical with those in the application software to be used.

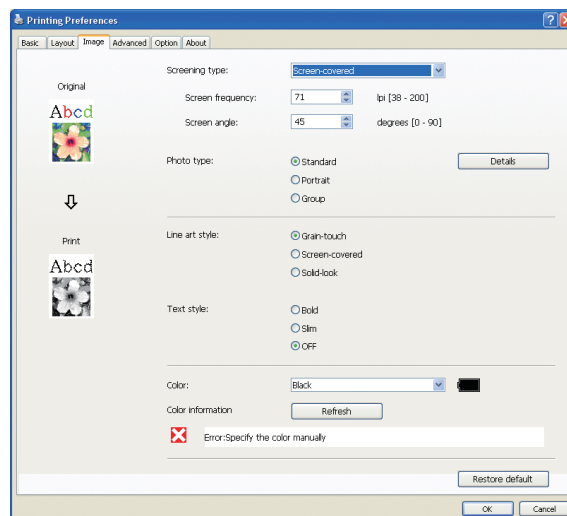
[Layout] Tab (refer to [page 59](#) for detailed settings)



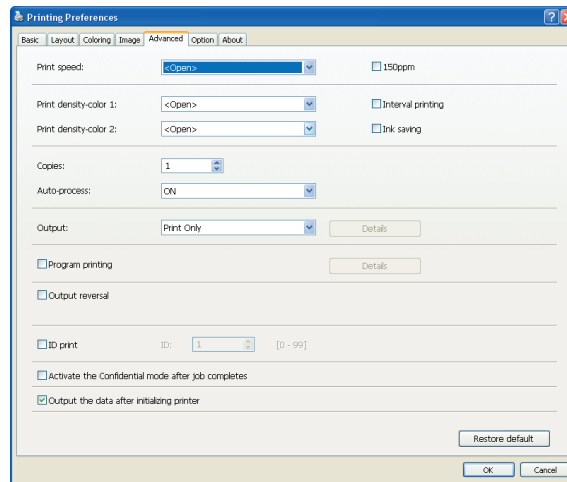
[Coloring] Tab (refer to [page 63](#) for detailed settings)



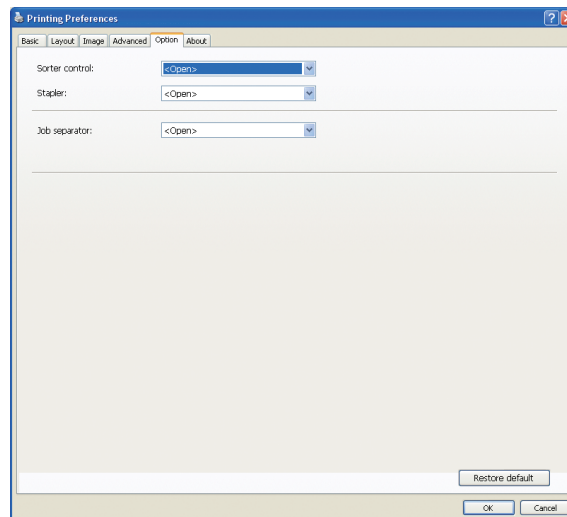
[Image] Tab (refer to [page 68](#) for detailed settings)



[Advanced] Tab (refer to [page 71](#) for detailed settings)



[Option] Tab (refer to [page 75](#) for detailed settings)



5

Start printing.

Click [OK] in the [Print] dialog box.

The selected document file data is then transmitted to your RISO printer and printed out there as specified in the previous step.

When using a USB Flash Drive, data is output to the USB Flash Drive. Disconnect the USB Flash Drive from the computer, connect it to the printer and print the data. For printing procedures, see the User's Guide of your RISO printer.

■ Setting the Print Conditions

You can set various print conditions over the tabs in the [Properties] dialog box.

To open this dialog box, click [Properties] in the [Print] dialog box.

IMPORTANT!

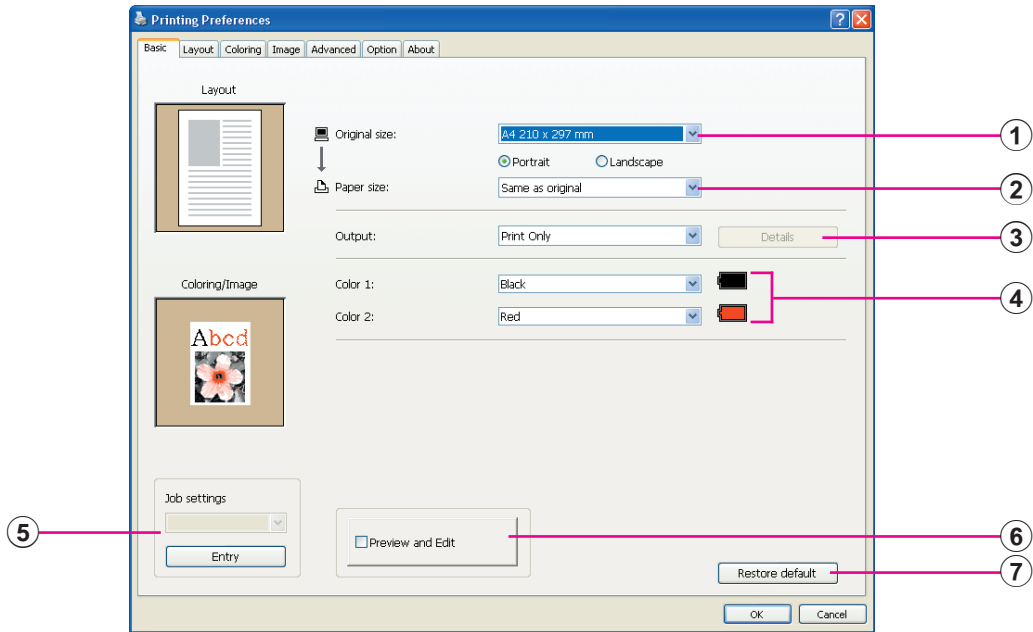
Some Printer Driver settings are disabled by the settings.

Printer Driver Settings		Printer Driver		USB flash-via-Printer Driver	
		Print Only	Storage Only	USB print (Manual)	USB print (Auto process)
[Advanced] Tab	Copies	Enable	Disable	Disable	Enable
	Auto-process	Enable	Disable	Disable	Enable
[Layout] Tab	180-degree rotation	Enable	Disable	Disable	Enable
[Advanced] Tab	Print speed	Enable	Disable	Disable	Enable
	Print density	Enable	Disable	Disable	Enable
	150ppm/180ppm	Enable	Disable	Disable	Enable
	Ink saving	Enable	Enable	Enable	Enable
	Interval printing	Enable	Disable	Disable	Enable
	Program printing	Enable	Disable	Disable	Enable
	ID print	Enable	Enable	Enable	Disable
	Activate the Confidential mode after job completes	Enable	Disable	Disable	Enable
	Output the data after initializing printer	Enable	Disable	Disable	Enable
[Option] Tab	Sorter control	Enable	Disable	Disable	Enable
	Stapler	Enable	Disable	Disable	Enable
	Job separator	Enable	Disable	Disable	Enable

Enable : Printer Driver's setting is active.

Disable : Printer Driver's setting is disabled (or cannot be set.) Set with printer's control panel when printing.

[Basic] Tab



Settings

- ① Original size
- ② Paper size
- ③ Output
- ④ Color
- ⑤ Job settings
- ⑥ Preview and Edit*
- ⑦ Restore default

* This option is not available for the mono-color printers.

① Original size

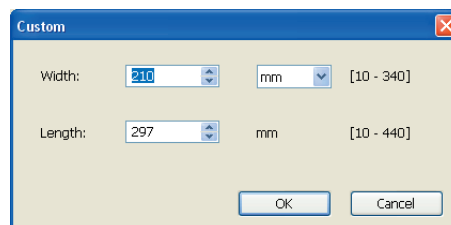
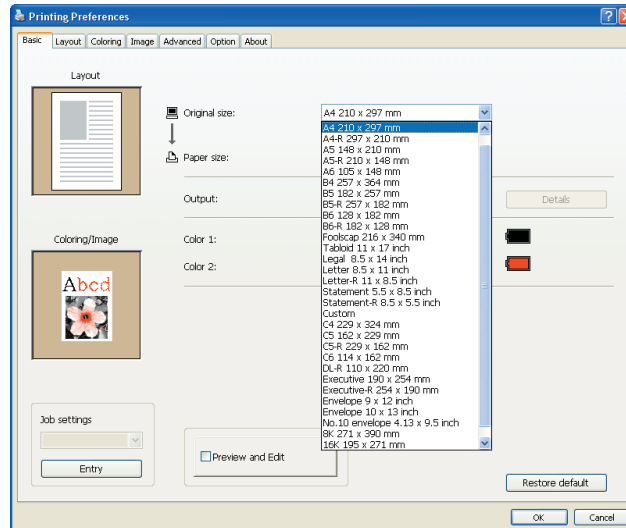
Setting the original size and paper direction.

IMPORTANT!

Be sure to specify the same page direction which was set in the application software used when creating the document data.

When paper is fed with the long edge first, select the paper size whose name contains the word “-R”.

When using any other custom-size paper than the displayed one, select [Custom] and enter its width and length in the boxes.



- NOTE**
- You can select custom-size paper from the drop-down list by registering it beforehand. (Page 46)
 - The range of paper sizes that can be entered in the [Custom] dialog box depends on your RISO printer. For details, see the User's Guide of your RISO printer.
 - You can select the unit of size from [mm] and [inch].

[Portrait] [Landscape]

This option is used for matching the page direction with the feed direction. Specify the page direction.

IMPORTANT!

Be sure to specify the same page direction which was set in the application software used when creating the document data.

② Paper size

Select the paper size for printing.

If you do not use scaling, select [Same as original].

If you select a paper size that is different from the original text, the image will be scaled to fit the selected paper size.

IMPORTANT!

If you select [Print position adjustment] (Page 62), scaling will not be done.

③ Output

For the Printer Driver

■ This item appears when [Storage Memory] on the [Environment] tab is set to “Installed”.

Print Only

Send the data to your RISO printer, and start printing in the [Auto-process].

Print & Storage

The print job is processed and the data is stored in the printer. You can reactivate the stored data on your RISO printer at anytime you like.

Storage Only

Send the data to your RISO printer to be stored. You can reactivate the stored data on your RISO printer at anytime you like.

For the USB flash-via-Printer Driver

USB print (Manual)

Data is output to the USB Flash Drive. You can specify a folder for storing the data in the USB Flash Drive. (Page 57)

USB print (Auto process)

Data is sent to the USB Flash Drive. It is printed according to the [Auto-process] setting. After a master-making, the data in the USB Flash Drive is automatically deleted.

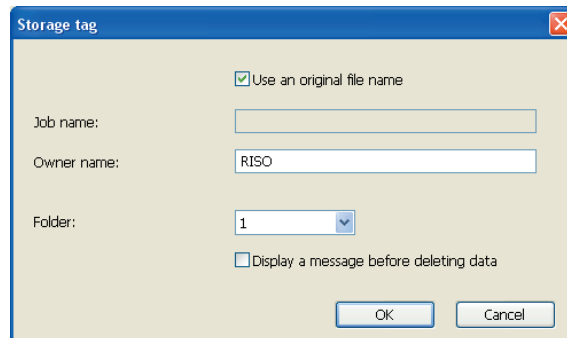
(A folder for storing the data in the USB Flash Drive cannot be selected. Data is stored in the [Auto process] folder.)

[Details]

Set additional information necessary for storing data and output of USB Flash Drive. The information below will be stored together with the document data. Such information can be used to identify the data.

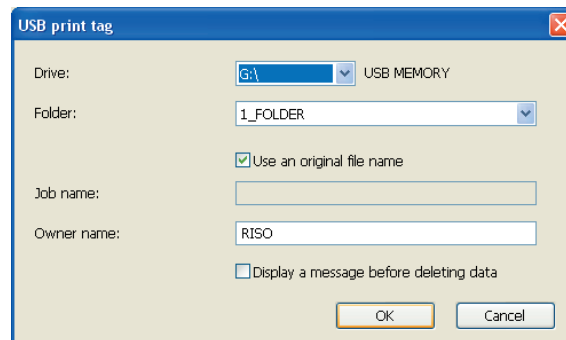
– For the Printer Driver

Selecting [Print & Storage] or [Storage Only] for [Output] enables you to click [Details]. Click [Details] to open the [Storage Tag] dialog box.



– For the USB flash-via-Printer Driver

Clicking [Details] opens the [USB print tag] dialog.



Use an original file name:

Select the check box to automatically use an original file name for identification on the application software on which the document was created.

Job name:

Enter ID name if you want to have any name different from one specified on the application software on which the document was created.

Owner name:

Input the name of the administrator of the data to be stored or output to the USB Flash Drive. The default is the name of the user logged into the computer.

Folder:

Select a folder (1-6) to use for storing or printing from the USB Flash Drive.

Drive (Only for USB flash-via-Printer Driver):

Select the drive that the USB Flash Drive is connected to. The drive detected as the USB Flash Drive appears in the drop-down list.

Display a message before deleting data:

Select the check box to display a confirmation message on the control panel of your RISO printer before deleting stored data.

IMPORTANT!

You are not allowed to use the prohibited characters as follows for [Job name] and [Owner name].

Prohibited characters : \ / : , ; * ? " < > |

NOTE With the Printer Driver for USB Flash Drive, when [USB print (Auto process)] is selected for [Output](Page 56), the data is automatically deleted after printing is finished.

④ **Color**

After [Color information] ([Image] tab on single-color printers; [Coloring] tab on two-color printers) is refreshed and the information on ink colors is obtained, ink colors are automatically selected from the ink colors mounted on the printer and the selected ink color is indicated in blue.

If the information cannot be obtained, manually select the print colors mounted on the printer.

⑤ **Job settings**

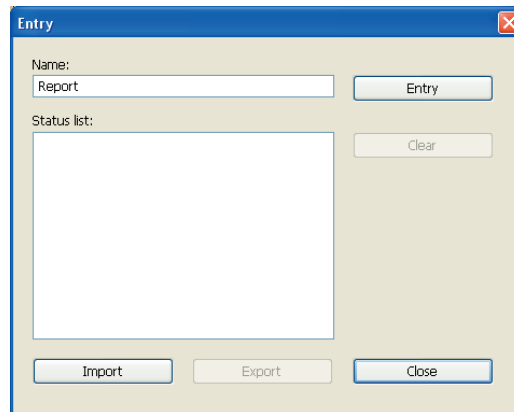
You can name and register the printer settings you often use.

The registered printer settings can be called up.

IMPORTANT!

To register/delete the printer settings, you are required to have administrator's privileges to log in to Windows.

- 1) Make the printer settings in the [Property] dialog box.
- 2) Clicking [Entry] displays the [Entry] dialog box.
- 3) The name registered appears in the [Status list:] by entering the name in the column under [Name:] and clicking [Entry].



4) Click [Close].

- NOTE** • The registered printer settings can be saved as a printer settings entry file by clicking [Export].
To register the printer settings from the printer settings entry file, click [Import] and specify the file.
- To delete the registered printer settings, select the name to be deleted and click [Clear].

⑥ **Preview and Edit**

■ **This option is not available for the mono-color printers.**

When a checkmark is placed in the checkbox, using the application software for printing automatically starts up "Preview and Edit". In the "Preview and Edit" mode, you can edit and check the color separation before printing.

For details, see [Page 81](#).

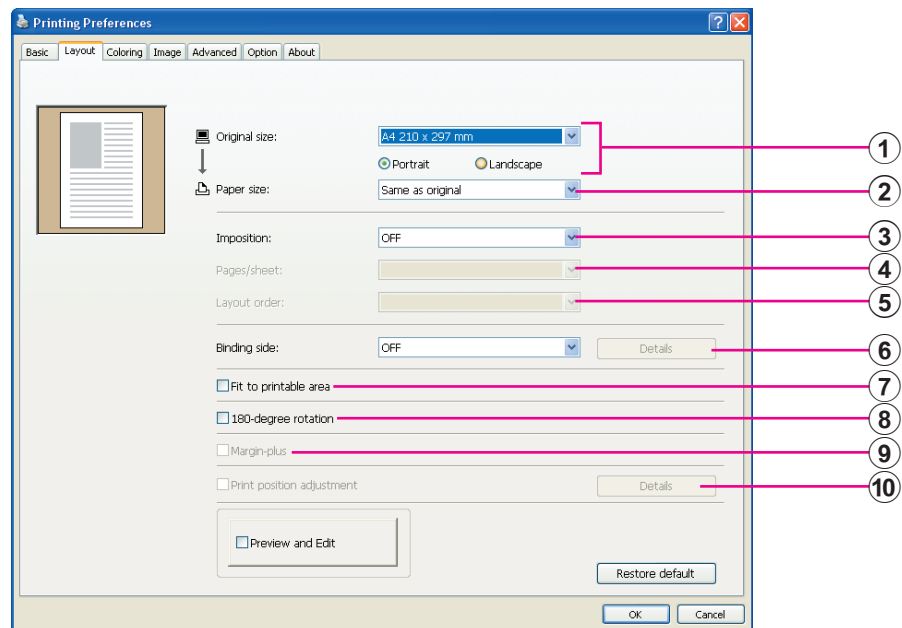
NOTE This is also displayed on the [Layout], [Coloring] and [Image] tabs.

⑦ **Restore default**

Clicking [Restore default] changes the settings in the [Property] dialog box back to their defaults.

NOTE This is also displayed on the [Layout], [Coloring], [Image], [Advanced] and [Option] tabs.

[Layout] Tab



Settings

- | | |
|------------------|-----------------------------|
| ① Original size* | ⑥ Binding side |
| ② Paper size* | ⑦ Fit to printable area |
| ③ Imposition | ⑧ 180-degree rotation |
| ④ Pages/sheet | ⑨ Margin-plus |
| ⑤ Layout order | ⑩ Print position adjustment |

* The settings are made depending on the settings in the [Basic] tab. ([Page 54](#))

① Original size

[Basic] Tab - [Original size] ([Page 54](#))

② Paper size

[Basic] Tab - [Paper size] ([Page 55](#))

③ Imposition

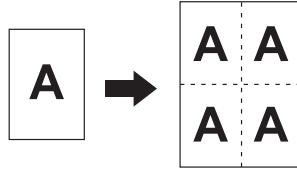
You can impose multiple originals on one page and print them.

OFF : Nomal printing (one page original par sheet).

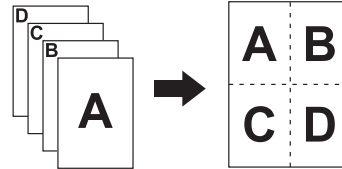
Multi-up : The same original is imposed multiple times on one sheet of paper.

Page layout : Different original pages are imposed on one sheet of paper.

Multi-up



Page layout



④ Pages/sheet

When [Multi-up] or [Page layout] is selected, select the number of pages.

2 pages : Imposes 2 original pages on a sheet.

4 pages : Imposes 4 original pages on a sheet.

⑤ Layout order

When [Page layout] is selected, select the imposition order and opening direction.

● **Page layout (2 pages)**

Left to right (Top to bottom) : Original pages are imposed from left to right or from top to bottom.

Right to left (Bottom to top) : Original pages are imposed from right to left or from bottom to top.

● **Page layout (4 pages)**

Left top to right : Original pages are imposed from left top to right.

Left top to bottom : Original pages are imposed from left top to bottom.

Right top to left : Original pages are imposed from right top to left.

Right top to bottom : Original pages are imposed from right top to bottom.

⑥ Binding side

Setting the binding margin.

OFF : A binding margin is not set.

Left : The binding margin is set on the left side of the sheet of paper.

Right : The binding margin is set on the right side of the sheet of paper.

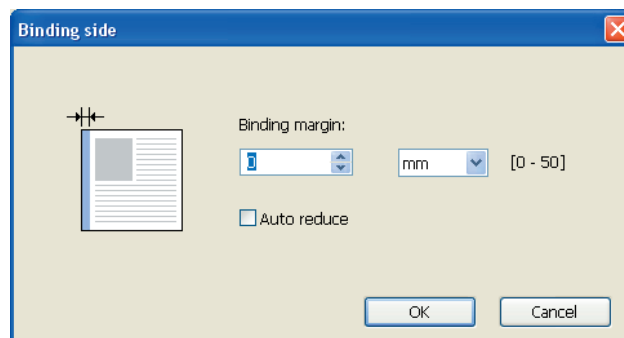
Top : The binding margin is set on the top of the sheet of paper.

Bottom : The binding margin is set on the bottom of the sheet of paper.

Details : Clicking [Details] opens the [Binding side] dialog box.

Set the binding margin and the unit.

When a checkmark is placed in the [Auto reduce] checkbox, the page size is automatically reduced if the original page size is not within the print paper.



⑦ Fit to printable area

If the original page does not have enough margin for printing, it is normally printed as it is without page size reduction.

If the original page has a smaller margin, the part that exceeds the effective print range is not printed out.

In such case, if you place a checkmark here, the whole page is printed out by adding a margin (changing the reduction rate) and preventing the edge of the paper from being removed.

NOTE This option is not available when [Margin-plus] is selected.

⑧ 180-degree rotation

You can rotate print images by 180 degrees by activating this option.

IMPORTANT!

You can set 180-degree rotation from your printer. If you set it both from your printer driver and printer, the print images do not rotate by 180 degrees.

⑨ Margin-plus

If you select this check box, printing will be done in a 95% scaling.

- NOTE**
- If [Fit to printable area] is not selected, this option is not available.
 - If [Print position adjustment] is selected, this option is not available.

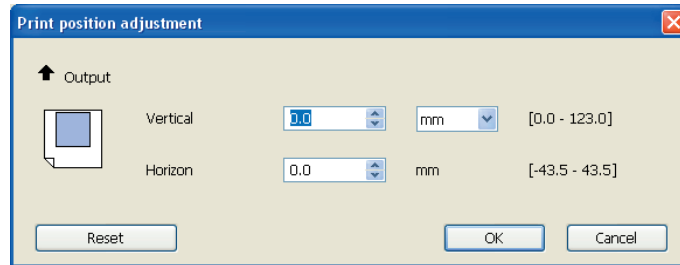
⑩ Print position adjustment

When you print the original on a sheet of paper that is larger than the original, this option adjusts the printed position without changing the printed original size.

Placing a checkmark and clicking [Details] opens the [Print position adjustment] dialog box. Set the position and the unit.

The settable range varies depending on the original size and the print paper size.

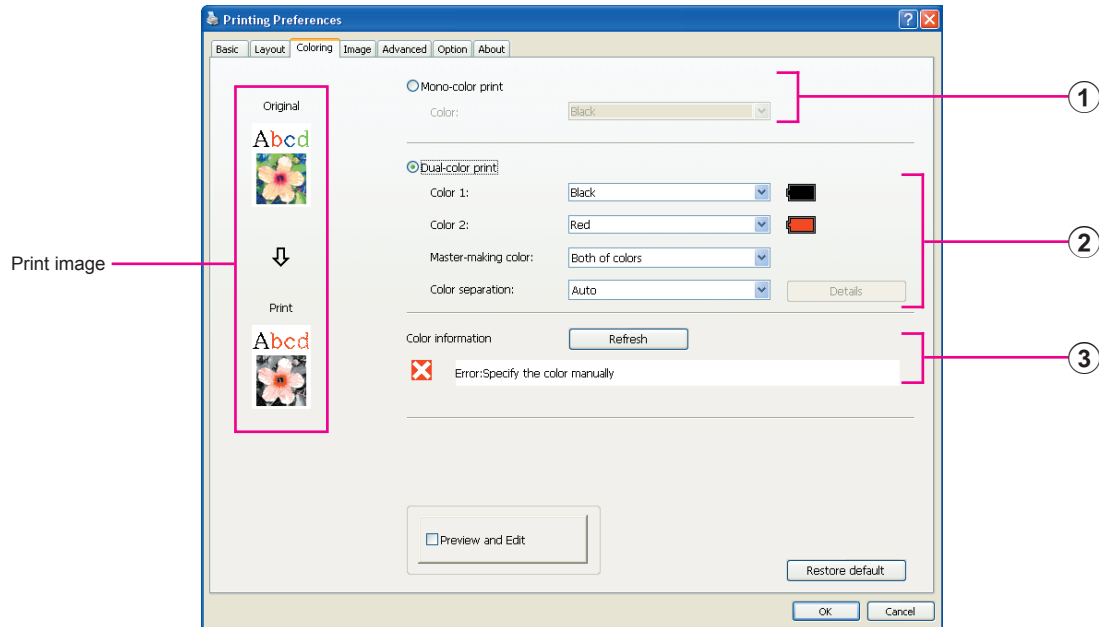
Reset : Clicking [Reset] returns to the original position.



- NOTE**
- If [Margin-plus] is selected, this option is not available.
 - If you set [Imposition] to other than OFF, this option is not available.
 - You can select the unit of size from [mm] and [inch].

[Coloring] Tab

- This window appears only on dual-color printers.



Settings

① Mono-color print

Color

② Dual-color print

Color 1*

Color 2*

Master-making color

Color separation

③ Color information

* The settings are made depending on the settings in the [Basic] tab. (Page 54)

① Mono-color print

When Mono-color print is selected, printing is done by only one Print Drum (Cylinder).

Color

Select the print color from the drop-down list.

- NOTE**
- When the printer is connected on the network, the color information for Color 1 mounted on your RISO printer can be acquired by clicking [Refresh]. When information is completely acquired, the color of Color 1 will be displayed next to "Color" in blue letters. If letters are not changed to blue or you want to use the color of Color 2, manually select the print color.
 - For mono-color print, it is recommended to use the Color 1. However, if the selected color is set to Color 2 side, use the Color 2 for printing.

② Dual-color print

When dual-color print is selected, each of text/line art section and photo images in the document data will be printed out respectively with dual coloring.

IMPORTANT!

- **As for characters, numeral figures, and drawings, create the data using colors on fonts and lines.**
You do not have to select same colors as those mounted on your printer, but the data will be printed in two colors even if you use more than two colors on your document.
- **As for photo images, only color photos can be printed in two colors. If you want to print black-and-white photos, specify either the color 1 or 2.**

Color 1

Color 2

Select the print color from the drop-down list.

NOTE When the printer is connected on the network, the color information on your RISO printer can be acquired by clicking [Refresh].

When information is completely acquired, the color of drum will be displayed next to "Color 1" and "Color 2" in blue letters.

If letters are not changed to blue, manually select the print color.

Master-making color

In using dual-color print, select the color of Drum (Cylinder) to carry out the "Master-making".

Color 1 only : Master making is carried out only in color (Drum (Cylinder)) 1.

Color 2 only : Master making is carried out only in color (Drum (Cylinder)) 2.

Both of colors : Master making is carried out with both Drums (Cylinders).

Color separation

Set the method and the conditions for separating an original into two colors.

[Auto]

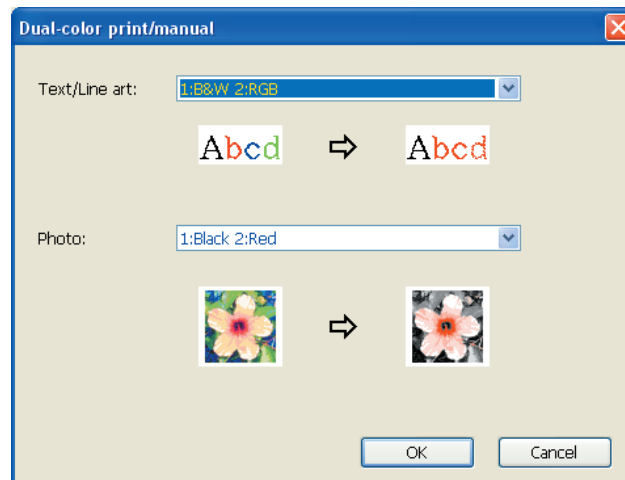
Matching the set Drum (Cylinder) colors, set the coloring of [Text/Line Art] and [Photo] to appropriate parameters.

When the settings can be completed, selected parameters will be displayed in blue letters on the [Manual] dialog box.

[Manual]

The [Dual-color print/manual] dialog box is displayed by clicking on the [Details] button.

Different conditions for color separation can be set for the “Text/Line art” areas and the “Photo” areas separately.

**[Text/Line Art]**

- 1: All : Text and line art are printed out in color 1.
- 2: All : Text and line art are printed out in color 2.
- 1:RGB 2:B&W : The colored sections of the text/line art are printed out in color 1 and the black (gray) sections are printed out in color 2.
- 1:Red 2:Blue/Black : Red, yellow and magenta sections of the text/line art are printed out in color 1 and blue, green and black sections are printed out in color 2.
- 1:B&W 2:RGB : The colored sections of the text/line art are printed out in color 2 and the black (gray) sections are printed out in color 1.
- 1:Blue/Black 2:Red : Red, yellow and magenta sections of the text/line art are printed out in color 2 and blue, green and black sections are printed out in color 1.

- 1:Red 2:Others
 - 1:Blue 2:Others
 - 1:Green 2:Others
 - 1:Black 2:Others
 - 1:Others 2:Red
 - 1:Others 2:Blue
 - 1:Others 2:Green
 - 1:Others 2:Black
- } : Text and line art are expressed as spot colors so that the ink color of Drum (Cylinder) 1 and Drum (Cylinder) 2 do not overlap with each other. Select the colors according to the ink colors at the time of printing.

[Photo]

1: All : Photo images are printed out in color 1.

2: All : Photo images are printed out in color 2.

1:Red 2:Black

1:Red 2:Blue

1:Red 2:Green

1:Black 2:Red

1:Blue 2:Red

1:Green 2:Red

} : Separate the colors of a color photo by assuming the ink colors set for Drum (Cylinder) 1 and Drum (Cylinder) 2. Overlap the ink color of Drum (Cylinder) 1 and Drum (Cylinder) 2 with each other and express it as a Dual-tone color.
Select the colors according to the ink colors at the time of printing.

1:Red 2:Others

1:Blue 2:Others

1:Green 2:Others

1:Black 2:Others

1:Gray 2:Others

1:Others 2:Red

1:Others 2:Blue

1:Others 2:Green

1:Others 2:Black

1:Others 2:Gray

} : Separate the colors of a color photo by assuming the ink colors set for Drum (Cylinder) 1 and Drum (Cylinder) 2. The colors are displayed as spot colors so that the ink color of Drum (Cylinder) 1 and Drum (Cylinder) 2 do not overlap with each other.
Select the colors according to the ink colors at the time of printing.

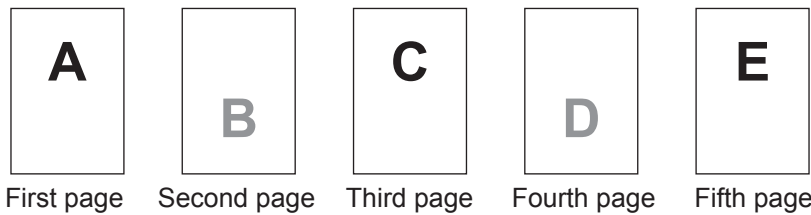
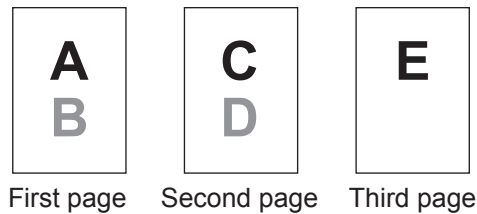
NOTE Separate the colors by assuming the ink colors set respectively for Drum (Cylinder) 1 and Drum (Cylinder) 2. You do not need to select the same coloring as the actually set ink colors. When printed in the selected colors, however, the colors are separated so as to make the colors closer to the colors of the original photo.

[Combination print]

With combination print, the original data is automatically colored in two (on the assumption: color 1 of black and color 2 of red), the data is transmitted to your RISO printer and the master making is carried out. The printer will stop after master making is carried out. Use the Combination print screen in the printer control panel to set the number of the copies and to press the start key.

[Use color separated data]

[Use color separated data] uses the original color-separated data and prints it. This option makes masters of odd pages with Drum (Cylinder) 1 and even pages with Drum (Cylinder) 2, therefore the first and second pages of the original are printed on the first copy, and the third and fourth pages of the original are printed on the second copy. When the total number of the original pages is odd, the master of the last page is made with Drum (Cylinder) 1 and no master is made with Drum (Cylinder) 2.

Original**Print****③ Color information**

■ **[IP address of the printer] on the [Environment] tab (Page 45) must be set.**

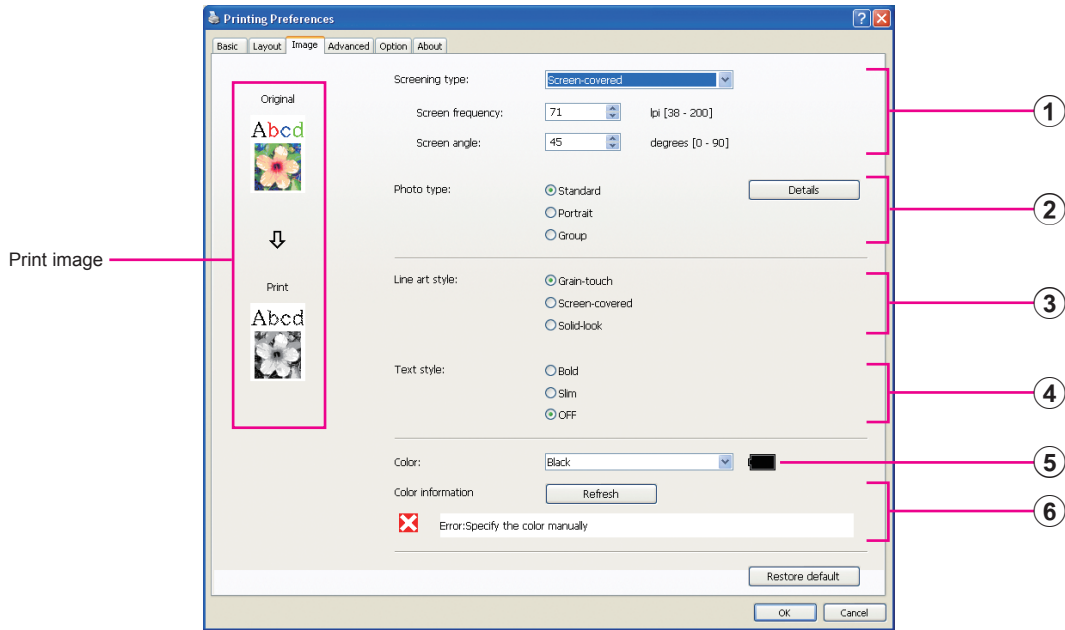
By clicking on the [Refresh] button the color information of the Drums (Cylinders) mounted in your RISO printer will be reflected in the RISO Printer Driver. The acquisition status (Complete/Error) of color information is displayed. In case of "Complete", the letters in the Ink Color of the printer driver will be indicated in blue.

NOTE Print image:

Following the settings in the [Coloring] tab, the image of the documentation data and print will be displayed.

The images are different from the actual documentation data and prints.

[Image] Tab



Settings

① Screening type*1

- Grain-touch
- Screen-covered
- Screen frequency
- Screen angle

② Photo type*1

- Standard
- Portrait
- Group

③ Line art style

- Grain-touch
- Screen-covered
- Solid-look

④ Text style

- Bold
- Slim
- OFF

⑤ Color*2*3

⑥ Color information*3

*1 It may not be changed depending on the settings of [Color separation/Manual]. (Page 64)

*2 The settings are made depending on the settings in the [Basic] tab. (Page 54)

*3 This option is available for the mono-color printers.

① Screening type

You can select either of the following two styles in printing out photo images in your document data. The print result of the selected style of photo images is seen on the left side of the screen.

Grain-touch:

Various tones of photo images are reproduced by changing the number of dots in an area according to original density. The printed-out photo images will have grain-touch appearance.

② Photo type

Screen-covered:

Various tones of photo images are reproduced by changing the size of dots according to original density. The printed-out photo images will be covered with a dot screen.

Though the wide range of tone levels in original photo images can be kept in this style, their fineness will be lowered.

When you select [Screen-covered], you can set the screen-covered parameter.

Screen frequency

You can select the frequency of dots per inch (25.4 mm). You can select the value from 38 to 200. The default value is 71.

Screen angle

You can select the angle of dot direction so as to make adjustments against moire or other problems. You can select the value from 0 to 90. The default value is 45.

Select the type of photo and set image finishing.

Standard

Clicking [Details] enables settings to be made for brightness and contrast.

Clicking [Details] opens the [Photo adjustment] dialog box.

Portrait

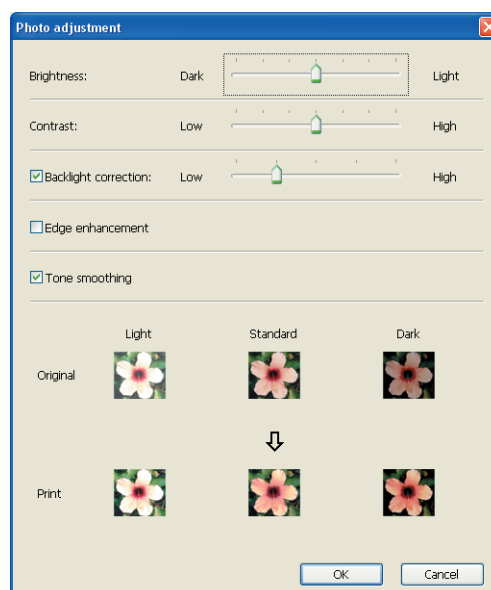
Use this setting for pictures of one or two individuals from the bust up. This type of image processing is particularly good for printing photos of faces.

Group

This setting is for group photos that are over-exposed. This process is effective for restoring facial features that have become washed out by a flash.

NOTE When either [Portrait] or [Group] is selected, the "Photo adjustment" settings made for [Standard] are returned to their defaults.

Photo adjustment



③ Line art style

- Brightness** : The brightness of photo images can be adjusted to 7 levels.
- Contrast** : The contrast of the overall image can be adjusted to 7 levels.
- Backlight correction** : When a check mark is placed in the check box, backlight correction is applied to the image to make it sharper.
- Edge enhancement** : When a check mark is placed in the check box, edge enhancement is applied to the image to accent contours.
- Tone smoothing** : This setting is available when [Screen-covered] is selected for [Photo]. When a check mark is placed in the check box, the tonal expressions used in screen-covered processing are smooth.

Specifies the expression method of the line (text).

- Grain-touch** : This mode displays the color gradation. The bright color is printed out in light tone and the dark color is printed out in deep tone.
- Screen-covered** : The text sections are displayed with halftone dots. This mode is unsuitable for small sized text.
- Solid-look** : This mode makes all text solid-look. You can use this mode to express the text clearly. The difference of each text color cannot be expressed.

④ Text style

You can adjust the thickness of text in this mode.

- Bold** : makes the text thicker and print out (to prevent patchiness).
- Slim** : makes the text slimmer and print out (to prevent crushed lines).
- OFF** : doesn't adjust the text volume.

⑤ Color

[Basic] Tab - [Color] (Page 54)

⑥ Color information

- This option is available for the mono-color printers.
- [IP address of the printer] on the [Environment] tab (Page 45) must be set.

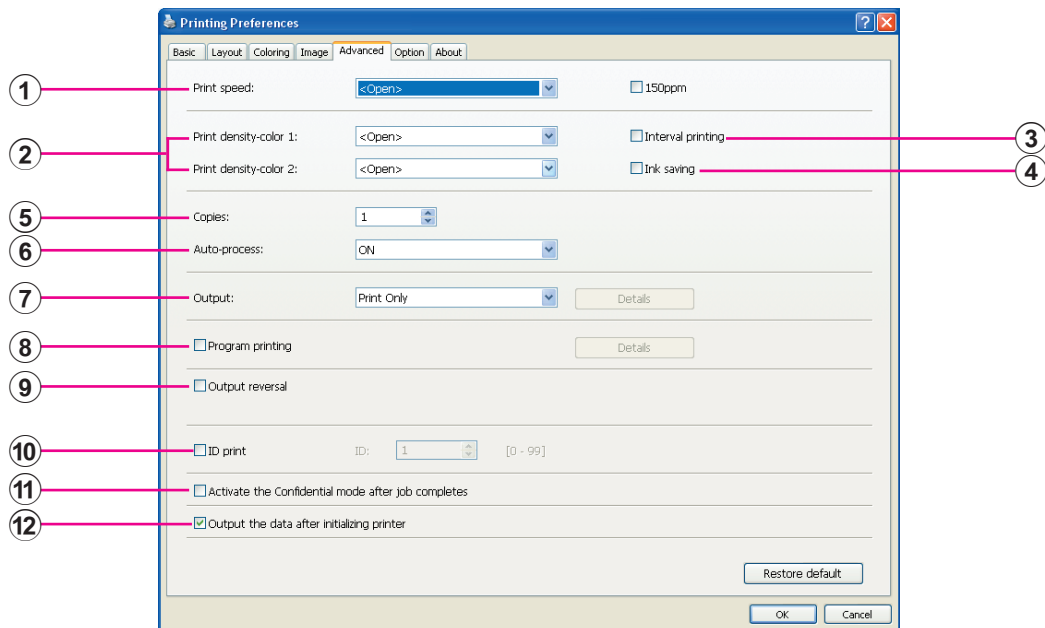
By clicking on the [Refresh] button the color information of the Drums (Cylinders) mounted in your RISO printer will be reflected in the RISO Printer Driver. The acquisition status (Complete/Error) of color information is displayed. In case of "Complete", the letters in the Ink Color of the printer driver will be indicated in blue.

NOTE Print image:

According to the settings of each [Photo type], [Line art style] and [Text style], the image of the documentation data and print will be displayed.

The actual documentation data and prints are different from the displayed images.

[Advanced] Tab



Settings

- | | |
|--|---|
| ① Print speed
150ppm/180ppm | ⑦ Output ^{*3} |
| ② Print density ^{*1} | ⑧ Program printing ^{*2} |
| ③ Interval printing ^{*2} | ⑨ Output reversal |
| ④ Ink saving | ⑩ ID print ^{*2}
ID |
| ⑤ Copies | ⑪ Activate the Confidential mode after job completes |
| ⑥ Auto-process | ⑫ Output the data after initializing printer |

*1 This option is not available for EZ2x1 series.

*2 This option is not available for EZ3x1/EZ2x1 series.

*3 The settings are made depending on the settings in the [Basic] tab. ([Page 54](#))

① Print speed

Selects the print speed of the printer from 5 levels.
If it remains [Open], the original is printed at the speed set on the printer side.

150ppm

■ **This option is available only for dual-color printers.**
Print at high speed (150ppm).

180ppm

■ **This option is available only for RZ10 series.**
Print at high speed (180ppm).

② **Print density**

■ **This option is not available for EZ2x1 series.**

Selects the print density of the printer from 5 levels.
The print density can be set for each Drum 1 and Drum 2.
If it remains [Open], the original is printed at the density set on the printer.

③ **Interval printing**

■ **This option is not available for EZ3x1/EZ2x1 series.**

By allowing the printer to skip a paper feeding during printing, the ink has time to dry, preventing it from leaving marks on the back of the next sheet.

④ **Ink saving**

The ink saving function of the printer is activated when this check box is selected. The volume of ink used for printing will be reduced compared with normal operation.

NOTE In case of selecting “Ink saving mode” printing image might be lighter or erased depending on darkness of the original image.

⑤ **Copies**

You can use this field to specify the number of copies if no field is prepared for print quantity entry in your application software. When the number of copies can be specified in the [Print] dialog box of the application software, on the other hand, you can ignore this setting because it has no effect on printing operation.

⑥ **Auto-process**

You can specify how to process your print jobs on your RISO printer, i.e. to complete them without interruption or to interrupt them after a specified process step. By interrupting your print jobs, you can check print position and quality with test prints before printing process or change the print job flow according to your print requirements. The available process flows are as follows.

ON:

To complete print jobs without operator involvement on your RISO printer. No pause is made between master-making and printing processes until the end of print jobs.

Pause before “Master-making”:

To interrupt print jobs before each master-making process, thus allowing you to handle a stack of printed copies, especially for duplex printing. You can view the page image on the LCD of the printer to check what you are about to print.

Pause before “Print”:

To interrupt print jobs before each printing process, thus allowing you to check a sample print.

OFF:

To interrupt print jobs before each process step, i.e. both master-making and printing processes.

⑦ Output

⑧ Program printing

IMPORTANT!

- For the Printer Driver, [Auto-process] is available only when you select [Print Only]. (See [Page 56](#)) (The setting is not valid for [Storage Only].) For stored data, set the [Auto-process] mode from the printer display when the data is retrieved.
- For the USB flash-via-Printer Driver, master-making/printing is executed according to the [Auto-process] setting made here when [Output] ([Page 56](#)) is set to [USB print (Auto process)]. For that reason, when [Pause before “Master-making”] or [OFF] is selected, master-making does not start automatically.

[Basic] Tab - [Output] ([Page 56](#))

■ This option is not available for EZ3x1/EZ2x1 series.

Printing jobs are conducted in sets of copies. One set should contain at least one page. By selecting program printing, you can click [Details]. Click [Details] to open [Program printing] dialog box.

Group	Copies	Cps. x	Sets
1	1	1	1
2	0	1	1
3	0	1	1
4	0	1	1
5	0	1	1
6	0	1	1

Job separation:
 Tape OFF

Copies : Enter the value for number of pages per set to be printed.

Sets : Enter the value for number of sets to be printed.

Reset : Returns Copies and Sets to their defaults.

Job separation

Tape : Tape is inserted into each group.

OFF : No job separation is performed.

■ To use the job separator mode, the optional job separator is required.

⑨ **Output reversal**

Placing a checkmark here outputs copies in reverse order.

⑩ **ID print**

■ **This option is not available for EZ3x1/EZ2x1 series.**

The data will be output as “ID print” when this check box is selected. For ID print, the input of PIN code is required when printing the data from the printer. Use this setting to print documents you do not want others to read, such as confidential documents.

Though the job is sent to the printer, the master or prints are not made until authorization is input from the printer’s control panel.

IMPORTANT!

- With the Printer Driver for USB Flash Drive, placing a check mark in the [USB print] check box automatically sets [USB print (Manual)] for [Output] (Page 56). [USB print (Auto process)] cannot be selected.
- Before setting [ID print], make the authorization settings in the printer. For details, see the printer user’s guide.

ID

Input your ID Number registered with the printer.

NOTE IDs are allocated to each individual user in the range from 0 to 99. For details, ask the administrator of the printer.

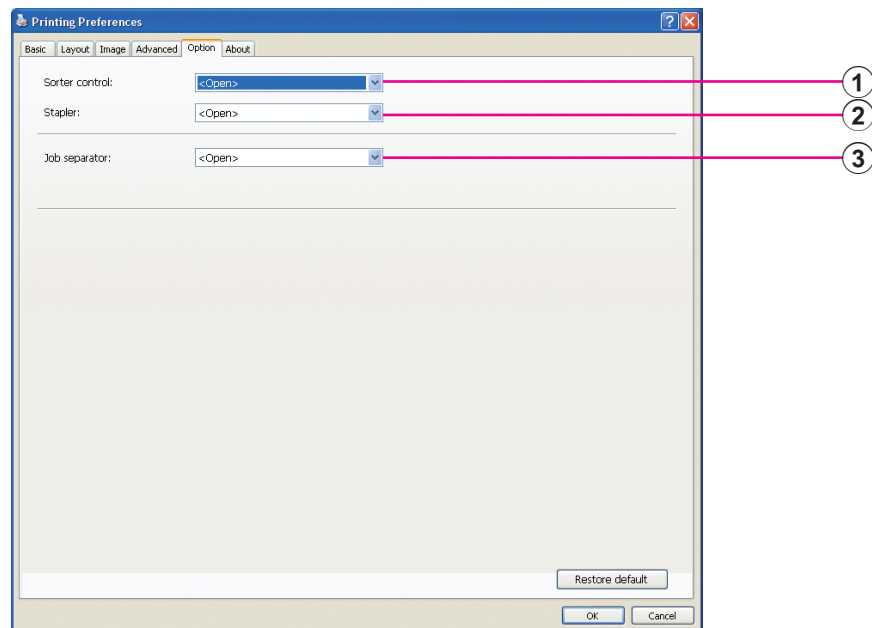
⑪ **Activate the Confidential mode after job completes**

You can prevent your confidential documents from being duplicated without your knowledge by selecting this check box. When this check box is selected, the remaining master is automatically replaced with a blank one after all specified print jobs are finished.

⑫ **Output the data after initializing printer**

Your RISO printer is initialized before receiving print data when this check box is selected. It is recommended to select this check box in most cases.

[Option] Tab



Settings

- ① Sorter control
- ② Stapler
- ③ Job separator

■ The optional settings are displayed if your RISO printer is equipped with optional devices, which are selected in the [Environment] tab. (Page 45)

① Sorter control

You can select an operation mode of the optional sorter which is connected to your RISO printer.

<Open> : The connected sorter operates as specified on the control panel of your RISO printer.

NonSort : Printed sheets are delivered into the Nonsort tray as if no sorter was installed, thus enabling you to process a large-volume print job speedily.

Sort : Printed sheets are sorted in order to produce a desired number of copies of a multiple-page document.

Group : Printed sheets are distributed into different groups of bins for different document pages.

Stack : Printed sheets are distributed into a series of separate bins repeatedly, thus enabling you to secure ink-smudge-free prints.

NOTE Refer to the user's guide of the sorter for its functions and operations.

② Stapler

You can activate the stapler built in the sorter connected to your RISO printer and select the stapling position.

- <Open>** : The built-in stapler operates as specified on the control panel of your RISO printer.
- OFF** : The stapler is not performed.
- ON-At Front Corner** : Single vertical staple at right-side corner of the paper tail in the feed direction.
- ON-At 2 Points in Center** : Dual vertical staple at paper tail corners in the feed direction.
- ON-At Rear Corner** : Single vertical staple at left-side corner of the paper tail in the feed direction.

NOTE Refer to the user's guide of the sorter equipped with the stapler for its functions and operations.

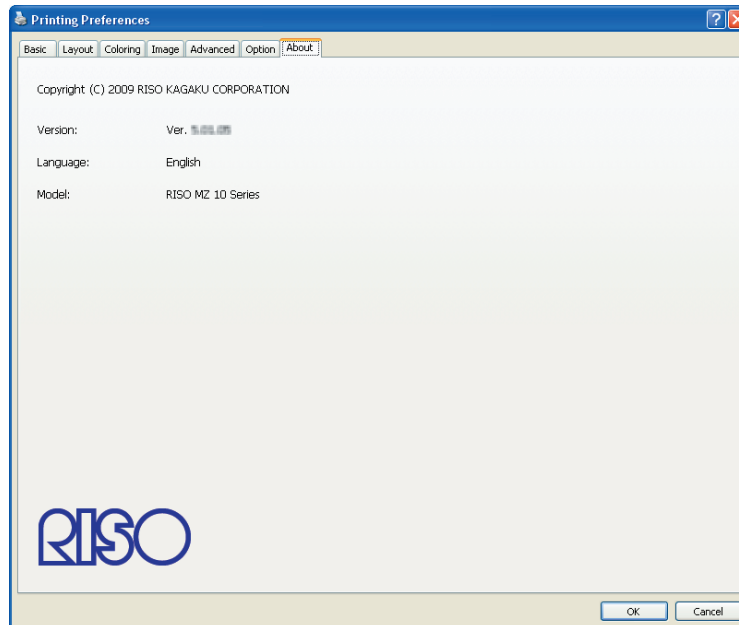
③ Job separator

You can activate the job separator on your RISO printer and select the timing of separation tape insertion.

- <Open>** : Follow the present setting of your RISO printer.
- OFF** : No separation tape inserted.
- ON-Between jobs** : Insert separation tapes per job.
- ON-Between Pages** : Insert separation tapes per page.

NOTE Refer to the user's guide of the job separator for its functions and operations.

[About] Tab



This tab shows the version number, language and model name of your Printer Driver.

In case you contact your service representative because of function errors, check this version number and so on beforehand.

■ Creating a RISORINC-format file

It is necessary to create a RISORINC-format file before sending data via FTP with RISO Network Card.

NOTE A RISORINC-format file can only be used with RISO printers.
All settings made in the Printer Driver are saved with the file.

IMPORTANT!

The procedure for creating RISORINC files differs when using the ③ to ⑩ settings of the [Layout] Tab (Page 59). See “Creating RISORINC Files When Using the [Layout] Tab Setting” (Page 80).

1

Open a document file and specify the print job in the [Print] dialog box.

Select [Print] in the [File] menu to open the [Print] dialog box.

2

Confirm that [RISO...] is selected in the [Printer] field in the [Print] dialog box.

The selected [RISO...] should correspond to the RISO printer model to which your document file is to be transmitted. Otherwise, the transmitted document data may not be printed out correctly on the target RISO printer.

IMPORTANT!

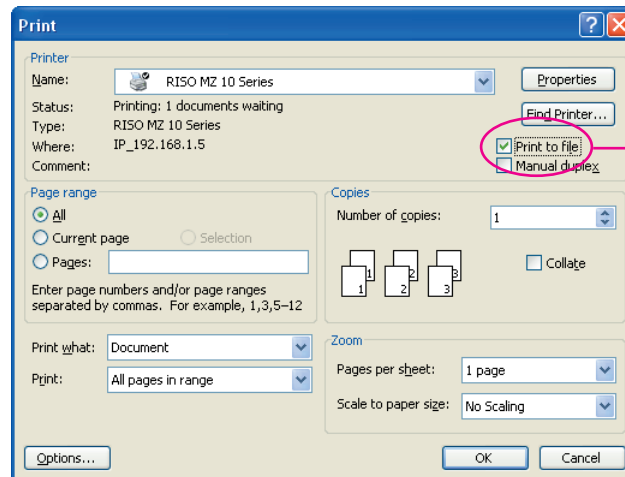
- The RISORINC-type file should be created with the RISO Printer Driver corresponding to your RISO printer. If the Printer Driver does not correspond to your RISO Printer Driver, the transmitted document may not be printed out correctly.
- USB flash-via-Printer Driver cannot be used.

3**Output the document data to a file.**

Select the corresponding check box, ex. [Print to file], and click [OK]. Then specify the name and the destination for the RISORINC-format file to be created in the displayed dialog box and click [OK] or [Save].

NOTE If the corresponding check box does not exist in the [Print] dialog box, change the Printer Driver configuration.

Open the [Properties] dialog box from the [Printers] folder and select “File” in the [Print to the following port] list in the [Details] or [Ports] tab. Then open the [Print] dialog box and click [OK].



Mark the check box of the [Print to file]

Creating RISORINC Files When Using the [Layout] Tab Setting

When using the ③ to ⑩ settings of the [Layout] Tab (Page 59), files cannot be properly created in the usual way. Create RISORINC files from a Local Port.

■ Adding a Local Port for RISORINC Files

- ① **Open the Properties dialog box.**

See Steps ① and ② on page 45.

- ② **Open the [Ports] tab.**

- ③ **Click [Add Port].**

- ④ **Select [Local Port] and click [New Port].**

- ⑤ **The [Name Port] dialog box opens, therefore input the drive and folder name where to store the RISORINC file (i.e., C:\RISO) and the file name (i.e., RISORINC.prn), and click [OK].**

If "C:\RISO\RISORINC.prn" is input for [Port Name], the file named "RISORINC.prn" is saved in the "RISO" folder of the C drive.

■ Selecting a Local Port for RISORINC Files

- ① **Open the Properties dialog box.**

See Steps ① and ② on page 45.

- ② **Open the [Ports] tab.**

- ③ **Place a check mark in the check box of the Local Port for RISORINC files that was added under [Print Port], and [OK].**

IMPORTANT!

After creating the RISORINC file using the [Layout] feature, restore the usual print port in the same way you set the Local Port.

NOTE It is convenient to install two RISO Printer Drivers and register one for printer output and the other for RISORINC Files.

■ Outputting RISORINC Files

- ① **Open the [Print] dialog box.**

Open the original data to convert to RISORINC format, and select [Print] from the [File] menu.

- ② **Check print conditions.**

Check that the RISO Printer Driver in which the Local Port has been selected for RISORINC files appears in the [Printer Name] list.

- ③ **Output to file.**

Remove the check mark from the [Print to file] check box and click [OK]. The file is saved under the name and folder set for the Local Port.

IMPORTANT!

- Remove the check mark from the [Print to file] check box. Data is automatically output to a file.
- To output other original data, either move or rename the currently saved RISORINC file. If output as is, the saved file is overwritten.



Preview and Edit

Preview and Edit is a special utility software for the dual-color printer driver.

The software cannot be used with the mono-color printer driver.

■ Preview and Edit	82
Preview and Edit Window	82

Preview and Edit

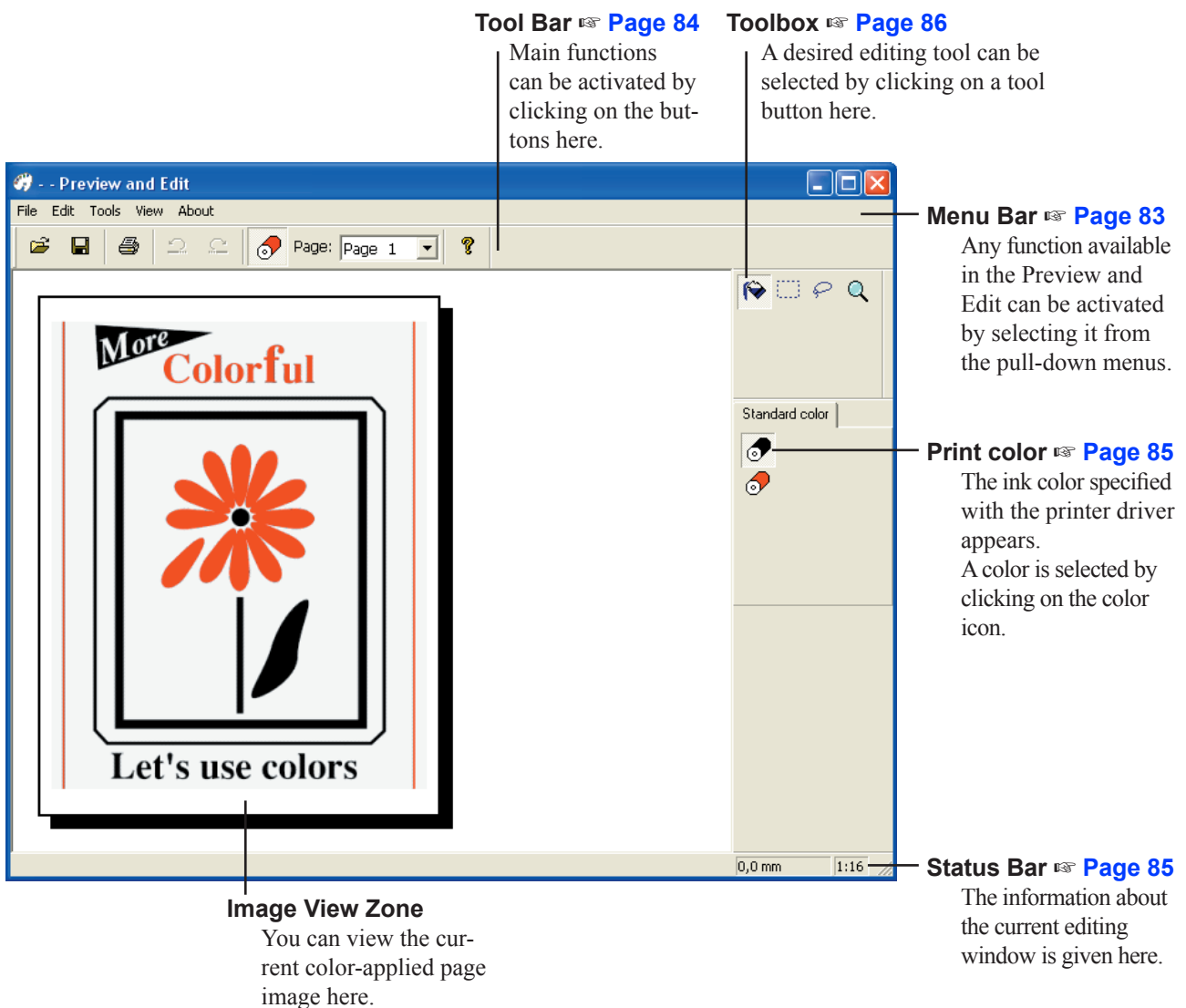
Before printing, you can preview the printing result obtained from the settings for color separations conditions on your PC monitor screen with Preview and Edit.

To preview the print image and change the print colors with Preview and Edit, place a checkmark in the Preview and Edit checkbox on the RISO Printer Driver and click Print. (Page 58)

Preview and Edit automatically starts up and the print image appears.

If the displayed Preview doesn't show the coloring you expected, you can partially change colors on this screen.

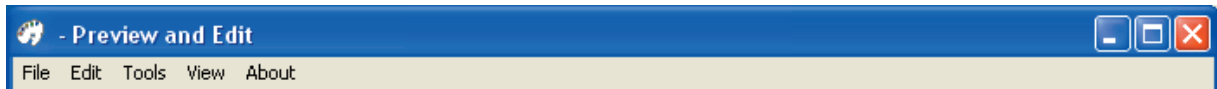
Preview and Edit Window



- NOTE**
- To exit Preview and Edit, select [File] and then [Exit] from the Menu Bar, or click [x] at the top right.
 - To save the edited file once and then continue the operation, you can start up "Preview and Edit" separately. Select [Start]-[All Programs]-[RISO]-[MZ10_MZ8 Series]-[Preview and Edit] of Windows in this order. For Windows 8/Windows 8.1, open the "Apps" screen and click [Preview and Edit] in the [RISO MZ10_MZ8 Series] group.

Menu Bar

Any function available in the Preview and Edit can be activated by selecting it from the pull-down menus.



File

Open
Save
Save As

Print
Recent File
Exit

☞ [Page 84](#)

☞ [Page 84](#)

Saves the currently-edited job file as a new color document file, keeping the original job file.

☞ [Page 84](#)

The files that you recently used appear.

Exits the Preview and Edit program.

Edit

Undo
Redo

☞ [Page 84](#)

☞ [Page 84](#)

Tools

Object Fill
Rectangle Fill
Free Hand Fill
Zoom

☞ [Page 86](#)

☞ [Page 86](#)

☞ [Page 86](#)

☞ [Page 86](#)

View

Toolbar
Status Bar
Toolbox
Print color
Zoom

☞ [Page 84](#)

☞ [Page 85](#)

☞ [Page 86](#)

☞ [Page 85](#)

☞ [Page 86](#)

About

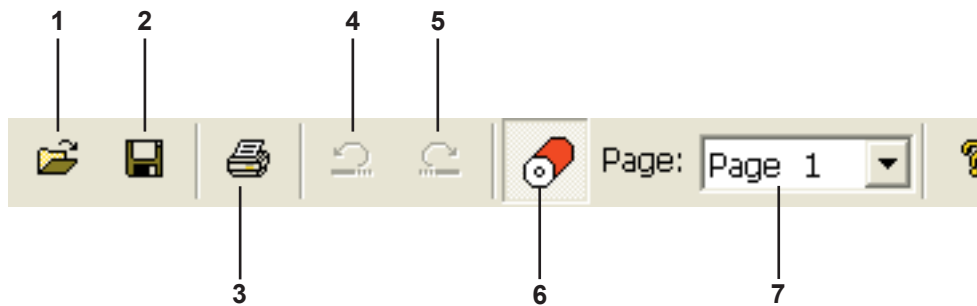
About ...

Indicates the version of the current Preview and Edit program.

Tool Bar

Main functions can be instantly activated by clicking on the tool buttons arranged in this bar.

The following functions are assigned to the respective tool buttons.



1. Open



Opens the [Open] dialog box, in which you can select a color document file to be printed or modified (**.rcs).

2. Save



Overwrites the original job file with the current one to save changes. If you want to keep the original job file, select [Save as] in the [File] menu and save the currently-edited job file as a new color document file.

3. Print



Opens the [Print] dialog box, in which you can specify the print job of the color document file created in the Preview and Edit. ([Page 87](#))

4. Undo



Cancels the operation which has just been performed to recover the previous condition. You can undo [Object Fill] operations only 10 times.

5. Redo



Performs the operation which has been cancelled by the “Undo” function once more.

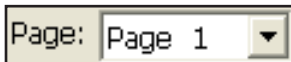
6. Print color



Opens/closes the [Print color], from which you can select an ink color desired to be applied to the images on the page displayed on the screen. To select an ink color desired to be applied to the images, click on it in the [Print color].

NOTE The displayed ink colors are only the ones that were set with the printer driver.

7. Paper Palette



Change the page to be displayed. Click [▼] to select a page.

Status Bar

The following information is given here;
- the current operation in progress



1. Mouse Pointer Location

The current location of the mouse pointer is displayed here. (0.0mm) indicates the upper left corner of the page.

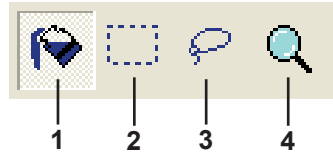
2. Zoom Ratio

The current page view size in the Image view zone is displayed here.

Toolbox

A desired editing tool can be selected by clicking on a tool button arranged in this box.

The following functions are assigned to the respective tool buttons.



1. Object Fill



Selects the [Object Fill] icon, which appears on the screen in place of the mouse pointer when it is placed on the page.

With this tool, you can fill an object with a color selected from the Ink color palette.

To apply a selected color to a specified object, place this icon inside the object and then click on it. The specified object is then painted in the selected ink color.

2. Rectangle Fill



Selects the [Rectangle Fill] icon, which appears on the screen in place of the mouse pointer when it is placed on the page.

You can paint all images placed within the rectangle developed by clicking and dragging this icon in a color selected from the Ink color palette.

To apply a selected color to the images, place the mouse pointer inside the rectangle and then click on it. The mouse pointer is changed to the [Object Fill] icon when it is placed inside the rectangle.

3. Free Hand Fill



Selects the [Free Hand Fill] icon, which appears on the screen in place of the mouse pointer when it is placed on the page.

You can paint all images placed within the free-hand-drawn closed line developed by clicking and dragging this icon in a color selected from the [Print color].

To apply a selected color to the images, place the mouse pointer inside the closed line and then click on it. The mouse pointer is changed to the [Object Fill] icon when it is placed inside the closed line.

4. Zoom



Selects the [Zoom] icon, which appears on the screen in place of the mouse pointer when it is placed on the page.

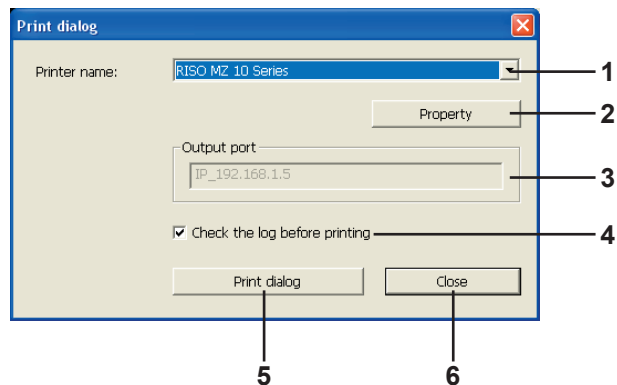
You can zoom in or out the page image by clicking this icon on the page.

To zoom in, simply click the left mouse button. To zoom out, on the other hand, click the left mouse button while pressing the [Ctrl] key. The page image can be zoomed in and out at any of six scales, i.e. 1:1, 1:2, 1:4, 1:8, 1:16 and 1:32.

You can also select a scale from [Zoom] in the [View] menu on the Menu Bar.

Print dialog box

[Print] dialog box appears when clicking on the [Print] icon on the Tool Bar or selecting [File]-[Print] from Menu Bar.



1. Printer name

When Preview and Edit startup is set with the printer driver, the printer name for the printer driver is shown.

When you start up Preview and Edit from the Start menu, the name of your installed printer appears. Select the printer name used for creating the edited color document file (*.rcs).

2. Property

The [Property] dialog box appears. ([Page 88](#))

Click here to change the settings conducted with the printer driver.

3. Output port

The printer port whose name appears.

4. Check the log before printing

The Color separation dialog box appears before printing. ([Page 88](#))

5. Print dialog

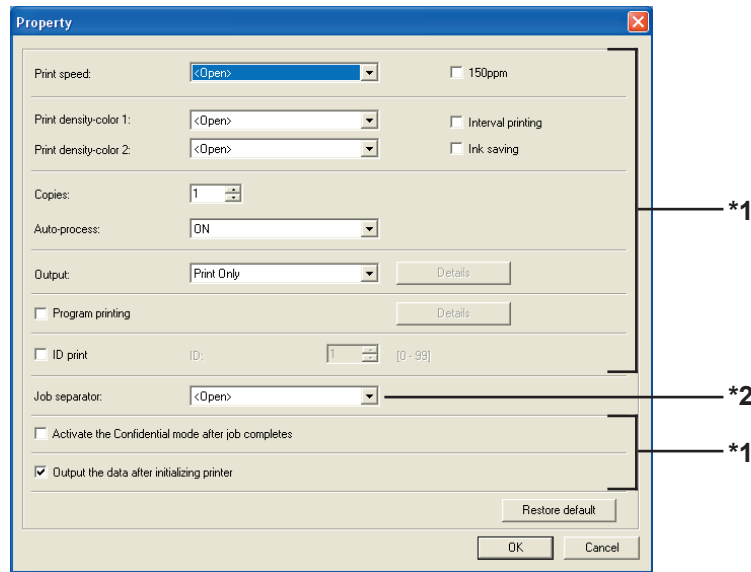
Clicking here starts printing.

6. Close

Closes the Print dialog box.

Property dialog box

The following settings made with the printer driver can be changed.

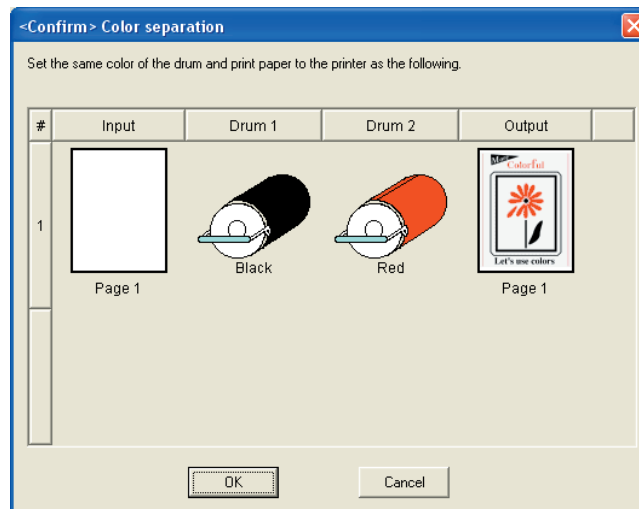


*1 Refer to the [Advanced] tab of the printer driver. (Page 71)

*2 Refer to the [Option] tab of the printer driver. (Page 75)

Color separation dialog box

The set position of the Drums (Cylinders) to be used for printing appears. Clicking [OK] starts printing.



Uninstalling the Printer Driver

The procedure of uninstalling the Printer Driver by using the uninstaller is described here.

For Windows Vista/Windows 7/Windows 8/Windows 8.1
In the case of uninstallation using the uninstaller, the driver package cannot be deleted. When the driver package needs to be deleted, in such cases as for re-installation of the Printer Driver, uninstall the Printer Driver manually.

■ Uninstall the Printer Driver90

■ Uninstall the Printer Driver

The procedure of uninstalling the Printer Driver is described here. (Regarding the procedure of manual uninstallation, see [Page 93](#).)

IMPORTANT!

To uninstall the Printer Driver, it is necessary to log on to Windows by the account with the authority to change the system setting (administrator, etc.).

1

Start the Uninstaller.

For Windows XP/Windows Vista/Windows 7:

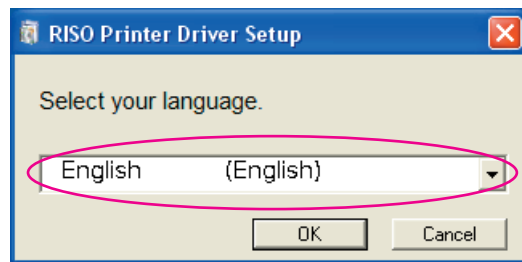
Click [Start]-[All Programs]-[RISO]-[(Your printer model, XX Series)]-[Uninstaller] in this order.

For Windows 8/Windows 8.1:

Open the “Apps” screen and click [Uninstaller] in the (Your printer model, XX Series) group.

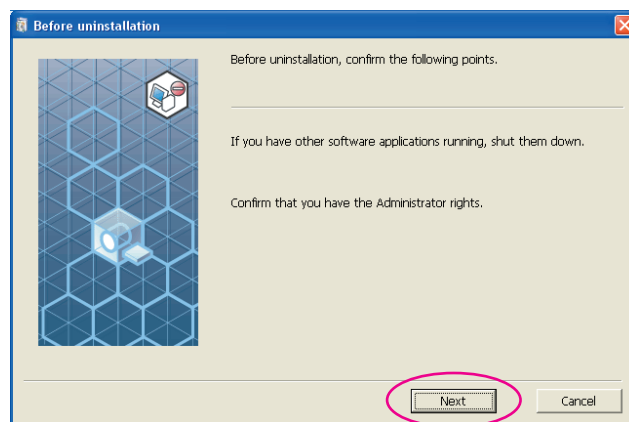
2

Select your language from the drop-down list, then click [OK].



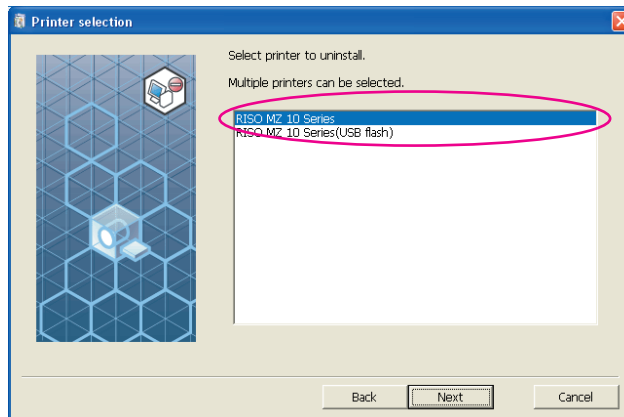
3

Click [Next].

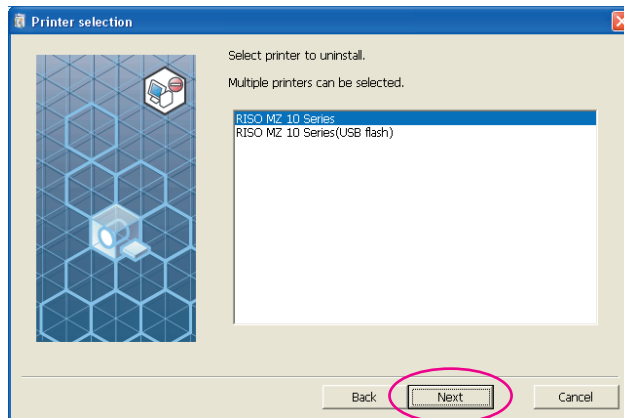


4

Select the printer for which the Printer Driver needs to be uninstalled.

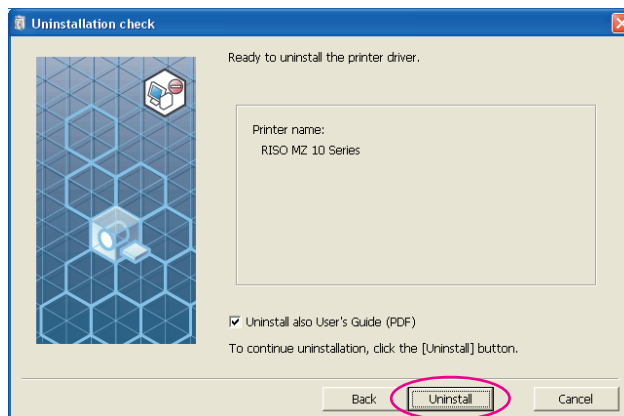
**5**

Click [Next].

**6**

Click [Uninstall].

When you place a checkmark in the [Uninstall also User's Guide (PDF)] checkbox, the User's Guide (PDF) will also be uninstalled.

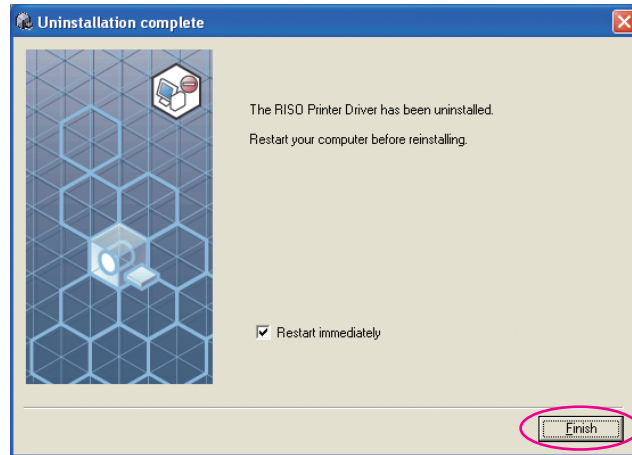


7

Click [Finish].

When the Printer Driver has been uninstalled, be sure to restart your computer.

When [Restart immediately] is checked, your computer is restarted after [Finish] is clicked.



Manually installing / uninstalling the Printer Driver

The procedure of installing / uninstalling the Printer Driver without using the installer / uninstaller is described here.

For Windows XP	94
■ Manual installation	94
In the case of USB cable connection	94
In the case of network connection /	
USB Flash Drive output.....	95
■ Manual uninstallation	96
For Windows Vista	97
■ Manual installation	97
In the case of USB cable connection	97
In the case of network connection /	
USB Flash Drive output.....	99
■ Manual uninstallation	100
For Windows 7	101
■ Manual installation	101
In the case of USB cable connection	101
In the case of network connection /	
USB Flash Drive output.....	102
■ Manual uninstallation	104
For Windows 8/Windows 8.1	105
■ Manual installation	105
In the case of USB cable connection	105
In the case of network connection /	
USB Flash Drive output.....	106
■ Manual uninstallation	108

For Windows XP

■ Manual installation

IMPORTANT!

- To install the Printer Driver, it is necessary to log on to Windows by the account with the authority to change the system setting (administrator, etc.).
- Server OS and printer sharing are not supported.

In the case of USB cable connection

1

Turn the power of the printer on, and connect the USB cable to the printer.

2

Start your computer, and insert the [RISO Printer Driver] CD-ROM into your computer.

3

Connect the USB cable to your computer.

4

Install the Printer Driver according to the instructions on the [Found New Hardware Wizard] window.

- ① Select [Install from a list or specified location], and [Don't search. I will choose the driver to install.], and then click [Next].
- ② Click [Have Disk], and select the inf file of the driver to install.
(CD-ROM): [Windows 32-bit]-[Driver]-[WinXP]-[English]-RISODRV.INF
- ③ Select the printer in use, and click [Next].
- ④ Complete the Wizard window.

5

Restart your computer.

6

Open [Control Panel]-[Printers and Fax] in this order, and open the properties of the printer in which the Printer Driver has been installed.

7

Click [Print processor] of the [Details] tab.

8

Select the following print processor from the list and click it.

For MZ10, MZ8 series : R35X8WP
For RZ10 series : R35X8ZP
For EZ5x1/EZ3x1/EZ2x1 series : R35X8GP

9

Select [NT EMF 1.008] from the list of default data types, and click [OK].

10 | Print the test page.

In the case of network connection / USB Flash Drive output

- 1** Open [Control Panel]-[Printers and Fax] in this order, and select [Add a Printer] for starting.
- 2** Select [Local printer] and click [Next].
- 3** Create the port.
In the case of network connection:
Create TCP/IP port or LPR port.
In the case of USB Flash Drive output:
Create the local port (C:\RISO\RISORINC.prn, etc.).
- 4** Click [Have Disk], and select the inf file of the driver to install.
In the case of network connection:
(CD-ROM):[Windows 32-bit]-[Driver]-[WinXP]-[English]-RISODRV.INF
In the case of USB Flash Drive output:
(CD-ROM):[Windows 32-bit]-[Driver]-[WinXP]-[English]-[USB flash]-RISODRV.INF
- 5** Select the printer in use and click [Next].
- 6** In the case of network connection, print the test page.
- 7** Restart your computer.

■ Manual uninstallation

- 1** Open [Control Panel]-[Printers and Fax] in this order, and delete the printer to uninstall.
- 2** From the menu of the [Printers and Fax] folder, open [File] and then [Server properties].
- 3** From the [Driver] tab, select the Printer Driver to uninstall, and click [Delete].

For Windows Vista

■ Manual installation

IMPORTANT!

- To install the Printer Driver, it is necessary to log on to Windows by the account with the authority to change the system setting (administrator etc.).
- Printer sharing is not supported.

In the case of USB cable connection

- 1** Turn the power of the printer on, and connect the USB cable to the printer.
- 2** Start your computer.
- 3** Connect the USB cable to your computer.
- 4** In the [Found New Hardware] window, select [Locate and install driver software] and then [Don't search online].
- 5** Select [I don't have the disk. Show me other options.], and then [Browse my computer for driver software].
- 6** Insert the [RISO Printer Driver] CD-ROM into your computer.
- 7** In the [Browse] window, select the inf file of the driver to install.
For Windows Vista (32-bit):(CD-ROM): [Windows 32-bit]-[Driver]-[WinVista_8]-[English]-RISODRV.INF
For Windows Vista (64-bit):(CD-ROM): [Windows 64-bit]-[Driver]-[WinVista_8]-[English]-RISODRV.INF
- 8** Select the printer in use and click [Next].
- 9** Restart your computer.
- 10** Open [Control Panel]-[Hardware and Sound]-[Printers] in this order, and open the properties of the printer in which the Printer Driver has been installed.

11

Click **[Print processor]** of the **[Details]** tab.

12

Select the following print processor from the list and click it.

In the case of a Windows Vista (32-bit):

For MZ10, MZ8 seriesR35V8WP

For RZ10 series.....R35V8ZP

For EZ5x1/EZ3x1/EZ2x1 series ...R35V8GP

In the case of a Windows Vista (64-bit):

For MZ10, MZ8 seriesR35V6WP

For RZ10 series.....R35V6ZP

For EZ5x1/EZ3x1/EZ2x1 series ...R35V6GP

13

Select **[NT EMF 1.008]** from the list of default data types, and click **[OK]**.

14

Print the test page.

In the case of network connection / USB Flash Drive output

- 1** Open [Control Panel]-[Hardware and Sound]-[Printers] in this order, and select [Add a Printer] for starting.
- 2** Click [Add a local printer] of the [Add a Printer] dialog box.
- 3** Create the port.
In the case of network connection:
Create TCP/IP port or LPR port.
In the case of USB Flash Drive output:
Create the local port (C:\RISO\RISORINC.prn, etc.).
IMPORTANT!
You cannot create the local port in the route of the startup drive.
Create any folder, and then create the local port in the folder.
- 4** Click [Have Disk], and select the inf file of the driver to install.
In the case of network connection:
For Windows Vista (32-bit):(CD-ROM):[Windows 32-bit]-[Driver]-[WinVista_8]-[English]-RISODRV.INF
For Windows Vista (64-bit):(CD-ROM):[Windows 64-bit]-[Driver]-[WinVista_8]-[English]-RISODRV.INF
In the case of USB Flash Drive output:
For Windows Vista (32-bit):(CD-ROM):[Windows 32-bit]-[Driver]-[WinVista_8]-[English]-[USB flash]-RISODRV.INF
For Windows Vista (64-bit):(CD-ROM):[Windows 64-bit]-[Driver]-[WinVista_8]-[English]-[USB flash]-RISODRV.INF
- 5** Select the printer in use, and click [Next].
- 6** In the case of network connection, print the test page.
- 7** Restart your computer.

■ Manual uninstallation

- 1** Open [Control Panel]-[Hardware and Sound]-[Printers] in this order, and delete the printer to uninstall.
- 2** From the menu that will be displayed by right-clicking on the margin of the [Printers] folder, select [Run as administrator] and then [Server properties].
- 3** From the [Driver] tab, select the Printer Driver to uninstall, and click [Delete].
- 4** When the [Delete driver and package] dialog opens, select [Delete driver and driver package] to delete the driver and driver package.

For Windows 7

Manual installation

IMPORTANT!

- To install the Printer Driver, it is necessary to log on to Windows by the account with the authority to change the system setting (administrator etc.).
- Printer sharing is not supported.

In the case of USB cable connection

- 1** Turn the power of the printer on, and connect the USB cable to the printer.
- 2** Start your computer.
- 3** Connect the USB cable to your computer.
IMPORTANT!
Do not proceed to the following steps until [Device driver software was not successfully installed] appears in the task tray.
- 4** Activate [Device Manager].
Click [Start] icon-[Control Panel]-[Hardware and Sound]-[Device Manager].
- 5** Right-click [Other devices]-[(Your printer name)] and then click [Update Driver Software] from the menu that appears.
- 6** Click [Browse my computer for driver software].
- 7** Insert the [RISO Printer Driver] CD-ROM into your computer.
- 8** Click [Browse], select the folder shown below and click [OK].
For Windows 7 (32-bit):(CD-ROM):[Windows 32-bit]-[Driver]-[WinVista_8]-[English]
For Windows 7 (64-bit):(CD-ROM):[Windows 64-bit]-[Driver]-[WinVista_8]-[English]
- 9** Select [(Your printer name)] from the list and click [Next].
- 10** Click [Close] and restart your computer.

- 11** Open [Control Panel]-[Hardware and Sound]-[Devices and Printers] in this order, right-click on the installed printer and click [Printer properties] from the menu that appears.
- 12** Click [Print processor] of the [Advanced] tab.
- 13** Select the following print processor from the list and click it.
In the case of a Windows 7 (32-bit):
For MZ10, MZ8 seriesR35V8WP
For RZ10 series.....R35V8ZP
For EZ5x1/EZ3x1/EZ2x1 series ...R35V8GP
In the case of a Windows 7 (64-bit):
For MZ10, MZ8 seriesR35V6WP
For RZ10 series.....R35V6ZP
For EZ5x1/EZ3x1/EZ2x1 series ...R35V6GP
- 14** Select [NT EMF 1.008] from the list of default data types, and click [OK].
- 15** Print a test page from the [General] tab.
- 16** Click [OK] to close the window.

In the case of network connection / USB Flash Drive output

- 1** Open [Control Panel]-[Hardware and Sound]-[Devices and Printers] in this order, and select [Add a Printer] for starting.
- 2** Click [Add a local printer] of the [Add a Printer] dialog box.
- 3** Create the port.
In the case of network connection:
Create TCP/IP port or LPR port.
In the case of USB Flash Drive output:
Create the local port (C:\RISO\RISORINC.prn, etc.).
IMPORTANT!
You cannot create the local port in the route of the startup drive.
Create any folder, and then create the local port in the folder.

- 4** Insert the [RISO Printer Driver] CD-ROM into your computer.
- 5** Click [Have Disk].
- 6** In the [Browse] window, select the following inf file and click [OK].
In the case of a network connection:
For Windows 7(32-bit):(CD-ROM):[Windows 32-bit]-[Driver]-[WinVista_8]-[English]-RISODRV.INF
For Windows 7(64-bit):(CD-ROM):[Windows 64-bit]-[Driver]-[WinVista_8]-[English]-RISODRV.INF
In the case of a USB Flash Drive output:
For Windows 7(32-bit):(CD-ROM):[Windows 32-bit]-[Driver]-[WinVista_8]-[English]-[USB flash]-RISODRV.INF
For Windows 7(64-bit):(CD-ROM):[Windows 64-bit]-[Driver]-[WinVista_8]-[English]-[USB flash]-RISODRV.INF
- 7** Select [(Your printer name)] from the list and click [Next].
- 8** Enter the [Printer name] and click [Next].
- 9** In the case of network connection, print the test page.
- 10** Click [Finish] to close the window.
- 11** Restart your computer.

■ Manual uninstallation

- 1** Open [Control Panel]-[Hardware and Sound]-[Devices and Printers] in this order, and delete the printer to uninstall from the printer folder.
- 2** Click on the existent printer and click [Print server properties] at the top of the window.
- 3** From the [Drivers] tab, select the Printer Driver to uninstall, and click [Remove].
- 4** When the [Remove Driver And Package] dialog opens, select [Remove driver and driver package.] to delete the driver and driver package.

For Windows 8/Windows 8.1

Manual installation

IMPORTANT!

- To install the Printer Driver, it is necessary to log on to Windows by the account with the authority to change the system setting (administrator etc.).
- Printer sharing is not supported.

In the case of USB cable connection

- 1** Turn the power of the printer on, and connect the USB cable to the printer.
- 2** Start your computer.
- 3** Connect the USB cable to your computer.
- 4** Activate [Device Manager].
Open the “Apps” screen and click [Control Panel]-[Hardware and Sound]-[Device Manager].
- 5** Right-click [Other devices]-[(Your printer name)] and then click [Update Driver Software] from the menu that appears.
NOTE If your printer name is not displayed, click [Action]-[Scan for hardware changes].
- 6** Click [Browse my computer for driver software].
- 7** Insert the [RISO Printer Driver] CD-ROM into your computer.
- 8** Click [Browse], select the folder shown below and click [OK].
For Windows 8 (32-bit)/Windows 8.1 (32-bit):
(CD-ROM):[Windows 32-bit]-[Driver]-[WinVista_8]-[English]
For Windows 8 (64-bit)/Windows 8.1 (64-bit):
(CD-ROM):[Windows 64-bit]-[Driver]-[WinVista_8]-[English]
- 9** Select [(Your printer name)] from the list and click [Next].
- 10** Click [Close] and restart your computer.

- 11** Open [Control Panel]-[Hardware and Sound]-[Devices and Printers] in this order, right-click on the installed printer and click [Printer properties] from the menu that appears.
- 12** Click [Print processor] of the [Advanced] tab.
- 13** Select the following print processor from the list and click it.
In the case of a Windows 8 (32-bit)/Windows 8.1 (32-bit):
For MZ10, MZ8 seriesR35V8WP
For RZ10 series.....R35V8ZP
For EZ5x1/EZ3x1/EZ2x1 series ...R35V8GP
In the case of a Windows 8 (64-bit)/Windows 8.1 (64-bit):
For MZ10, MZ8 seriesR35V6WP
For RZ10 series.....R35V6ZP
For EZ5x1/EZ3x1/EZ2x1 series ...R35V6GP
- 14** Select [NT EMF 1.008] from the list of default data types, and click [OK].
- 15** Print a test page from the [General] tab.
- 16** Click [OK] to close the window.

In the case of network connection / USB Flash Drive output

- 1** Open [Control Panel]-[Hardware and Sound]-[Devices and Printers] in this order, and select [Add a Printer] for starting.
- 2** Click [Add a local printer] of the [Add a Printer] dialog box.
- 3** Create the port.
In the case of network connection:
Create TCP/IP port or LPR port.
In the case of USB Flash Drive output:
Create the local port (C:\RISO\RISORINC.prn, etc.).
IMPORTANT!
You cannot create the local port in the route of the startup drive.
Create any folder, and then create the local port in the folder.

- 4** Insert the **[RISO Printer Driver] CD-ROM** into your computer.
- 5** Click **[Have Disk]**.
- 6** In the **[Browse]** window, select the following inf file and click **[OK]**.
In the case of a network connection:
For Windows 8(32-bit)/Windows 8.1(32-bit):
(CD-ROM):[Windows 32-bit]-[Driver]-[WinVista_8]-[English]-RISODRV.INF
For Windows 8(64-bit)/Windows 8.1(64-bit):
(CD-ROM):[Windows 64-bit]-[Driver]-[WinVista_8]-[English]-RISODRV.INF
In the case of a USB Flash Drive output:
For Windows 8(32-bit)/Windows 8.1(32-bit):
(CD-ROM):[Windows 32-bit]-[Driver]-[WinVista_8]-[English]-[USB flash]-RISODRV.INF
For Windows 8(64-bit)/Windows 8.1(64-bit):
(CD-ROM):[Windows 64-bit]-[Driver]-[WinVista_8]-[English]-[USB flash]-RISODRV.INF
- 7** Select **[(Your printer name)]** from the list and click **[Next]**.
- 8** Enter the **[Printer name]** and click **[Next]**.
- 9** In the case of network connection, print the test page.
- 10** Click **[Finish]** to close the window.
- 11** Restart your computer.

■ Manual uninstallation

- 1** Open [Control Panel]-[Hardware and Sound]-[Devices and Printers] in this order, and delete the printer to uninstall from the printer folder.
- 2** Click on the existent printer and click [Print server properties] at the top of the window.
- 3** From the [Drivers] tab, select the Printer Driver to uninstall, and click [Remove].
- 4** When the [Remove Driver And Package] dialog opens, select [Remove driver and driver package.] to delete the driver and driver package.



Appendix

Troubleshooting Tips	110
Error Message on PC's Display	110
Operation Problems	111

Troubleshooting Tips

Error Message on PC's Display

Take actions as given below if the following error messages appear in the PC's display.

Message

The printer is not ready for printing.
(The device is not ready.)

Description and Action

This message appears when your RISO printer requires paper or it is not connected to your computer properly.

Action Replenish paper or check your RISO printer and the printer cable for poor connection, and then restart printing.

This message also appears when the memory of your RISO printer becomes full during data transmission because the size of the document data concerned is too large.

Action Reduce the file size of the document data concerned or increase the value of the [Timeout] setting in your computer system, and then restart printing.

Cannot print because an error is found in the current printer settings.

This message appears if the printer settings (paper size, print orientation, etc.) in the application software and the Printer Driver do not match.

Action Change the printer settings in the application software to make them identical with those in the Printer Driver or vice versa.

Operation Problems

Check your system setup as given below if you encounter the following operation problems. Contact your service representative for help if you cannot solve the problem.

No Printout

Problem

Your RISO printer is not receiving data from your computer even after the print job finishes in the application software.

Cause / Condition and Action

- Your computer is not securely connected to your RISO printer.

Action > Connect the printer cable (or network cable) to both your computer and your RISO printer securely.

- The [RISO...] Printer Driver is not selected.

Action > Select it and reprint.

- [Printing] is displayed as the printer status when you open the [RISO...] printer monitor window.

Action > Wait until the printer status display changes in the [RISO...] printer monitor window.

Problem

Your RISO printer cannot finish processing the current document data.

Cause / Condition and Action

- ❑ The printer cable (or network cable) was removed just after a print job started in the application software. ([Printing] is displayed when you open the [RISO...] printer monitor window in this case.)

Action ▶ Reconnect the cable and cancel the current job in the [RISO...] printer monitor window. Then turn off the main power switch of your RISO printer. After approximately 10 seconds, turn it on again.

- ❑ [Pause] is displayed as the printer status when you open the [RISO...] printer monitor window.

Action ▶ Click [Restart] in the [Document] menu in the [RISO...] printer monitor window.

- ❑ The printer settings (paper size, print orientation, etc.) in the application software and in the Printer Driver do not match.

Action ▶ Change the printer settings in the application software to make them identical with those in the Printer Driver or vice versa, and repeat the print job from the application software.

- ❑ The print job has been canceled before completion in the application software on your computer.

Action ▶ Turn off the main power switch of your RISO printer. After approximately 10 seconds, turn it on again.

Your RISO printer won't start making master when the documentation data is transmitted from your computer or your RISO printer won't start printing after making master.

- ❑ If you set the [Auto-process] to a setting other than "ON", the process stops in operation in order to wait for instructions.

Action ▶ Press Start key on your RISO printer. The next process starts.

Unexpected Print Result _____

Problem	Cause / Condition and Action
<p>Graphics cannot be printed properly.</p>	<p><input type="checkbox"/> The current [RISO...] printer driver was not selected as active when editing graphics.</p> <p>Action Select the current [RISO...] Printer Driver and edit graphics again because graphics may not be printed properly if they are edited with another Printer Driver selected.</p> <p><input type="checkbox"/> The specified custom paper size was so large that unexpected margins were assigned on a page.</p> <p>Action Select another paper size or specify the custom paper size within the valid range.</p>
<p>Images are reduced unexpectedly.</p>	<p><input type="checkbox"/> Do you use the Printer Driver corresponding to your RISO printer?</p> <p>Action If the name of your RISO printer is different from the model name of your Printer Driver, the document data cannot be printed out correctly.</p>
<p>Some fonts cannot be printed properly.</p>	<p><input type="checkbox"/> The [Use Printer Font] option is selected in the application software.</p> <p>Action Cancel the [Use Printer Font] option in the application software.</p>
<p>The page image is not centered or is clipped at an edge.</p>	<p><input type="checkbox"/> The paper size setting in the application software is not identical with that in the Printer Driver.</p> <p>Action Make both paper size setting identical.</p> <p><input type="checkbox"/> The print area specified in the application software is beyond the maximum print area of your RISO printer.</p> <p>Action Increase the border margins in the application software to contain the page image within the printable area of your RISO printer.</p> <p><input type="checkbox"/> There is something wrong with the Drum (Cylinder) in your RISO printer.</p> <p>Action Check your RISO printer, referring to the dedicated user's guide.</p>

Unexpected Action _____

Problem

Your RISO printer repeats the master-making process for each copy of the identical page.

Cause / Condition and Action

- The [Collated] check box is selected in the [Print] dialog box in the application software.

Action > Cancel the current print job on your computer and turn off the main power switch of your RISO printer. After approximately 10 seconds, turn it on again. Always cancel the [Collate Copies] or [Collated] option in the [Print] dialog box when starting a print job.

Your RISO printer does not operate as specified in the [Sorter control] option in the Printer Driver.

- The finishing job specified in the [Sorter control] option is not available for the current combination of your RISO printer and an optional sorter.

Action > Refer to the dedicated user's guides of your RISO printer and the optional sorter.

Original data cannot be output to the USB Flash Drive.

- Are you using the Printer Driver for USB Flash Drive?
There are two types of Printer Drivers. To output to a USB Flash Drive, install the USB flash-via-Printer Driver. Data cannot be output to a USB Flash Drive using an ordinary Printer Driver. ([Page 35](#))
 - Are you using a USB Flash Drive formatted for RISO folders?
Create a folder just for RISO files in the USB Flash Drive. ([Page 41](#))
-

Unable to Specify Settings _____

Problem	Cause / Condition and Action
A name cannot be entered in the dialog box to register the custom paper size.	<input type="checkbox"/> The name is too long for the corresponding field. Action Valid range of the length is 30 characters.
A desired value cannot be entered in the corresponding fields to register the custom paper size.	<input type="checkbox"/> The value does not fall within the range. Action Enter the value within the valid ranges into the relevant fields.
The custom paper size cannot be registered in the [RISO...] printer driver.	<input type="checkbox"/> The relevant dialog box was not closed correctly. Action Click [OK] on [Environment] tab after closing the [Custom paper entry] dialog box. (Page 46)
The specified custom paper size cannot be selected in the application software.	<input type="checkbox"/> [Custom] is not selected in the [Paper Size] option in the [Properties] dialog box of the Printer Driver. Action Select [Custom] in the [Paper Size] option. <input type="checkbox"/> [Paper Size: Custom] cannot be selected in the [Printer Setup] dialog box in the application software. Action Specify a standard paper size which is larger than the specified custom one.

RISO