
RISO Printer Driver

USER'S GUIDE for EZ5/EZ3/EZ2/KZ Series



This document is intended for use by RISO, its authorized dealers and purchasers of the equipment described herein. While every effort has been made to insure the accuracy of information contained in this document, RISO, its authorized dealers and their employees shall not be held responsible for any inaccuracies it may contain.

ALL SPECIFICATIONS ARE SUBJECT TO CHANGE WITHOUT NOTICE.

The screens used in this manual are now under development. Therefore, they might be different from the actual screens.

Reproduction or copying of this manual or any parts without permission is strictly prohibited. Although every effort has been made to ensure that the contents of this manual are error-free, please contact us if you notice any errors or other points which should be brought to the company's attention.

© Copyright 2016 RISO KAGAKU CORPORATION

- RISO and RISORINC are trademarks or registered trademarks of RISO KAGAKU CORPORATION in the United States and other countries.
- Microsoft, Windows and Windows Vista are either registered trademarks or trademarks of Microsoft Corporation in the United States and/or other countries.
- Other corporate names and/or trademarks are either registered trademarks or trademarks of each company, respectively.
- The screens and content appearing in this manual may differ from the actual product.
- The screens and messages appear in procedures may differ depending on the type of computer and application.

Preface

Welcome to the high-speed PC printing field presented by RISO printers through RISO Printer Drivers.

The RISO printers, which are designed to operate as a high-speed GDI printer, enable you to print various documents you create on different computer platforms very speedily, only if an appropriate RISO Printer Driver is installed in your computer.

The GDI printer, as you know, uses the bit-mapped image data developed on your PC monitor screen as print data source, enabling you to print the exactly same image as of what you see on your PC monitor screen in most cases. Besides, it requires no printer font to print document, thus relieving you of the restrictions on the use of fonts when you create documents on your PC.

The RISO printers can also operate as a network printer under various LAN environments, with an additional network interface card embedded inside.

KZ cannot be connected via network.

About the Guide Signs

The following advice signs are given to the descriptions which will help a user to avoid unexpected troubles and obtain the optimum performance of this product.

- **IMPORTANT !**

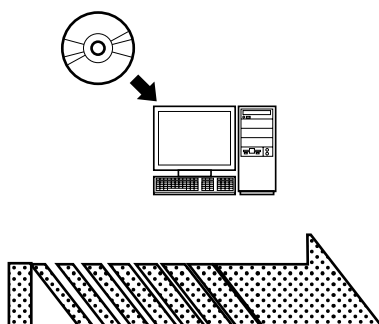
Gives you helpful advice for trouble-free operation.

- **NOTE** Gives you tips for more effective use of this product.

Procedure before printing

Before you use the printer at the first time, carry out the installation procedure below.
After installation, follow the basic operation procedure. Then, you can print out the documentation data.

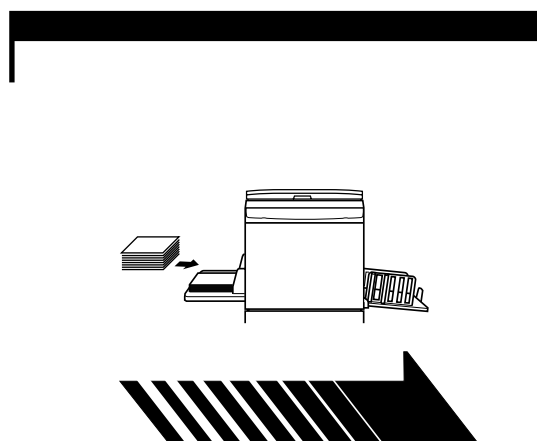
Installation (When the printer is used at the first time)



Installing the Printer Driver

Install the RISO Printer Driver into your computer. [Page 8](#)

- Depending on the connecting method, your computer needs to be connected to the printer in advance.



1. Preparing for the printer

Prepare for the printer and put the print paper suitable for the original data to be printed out onto the standard (multipurpose) tray.

- For the preparation method for the printer, read the user's guide of the RISO printer.

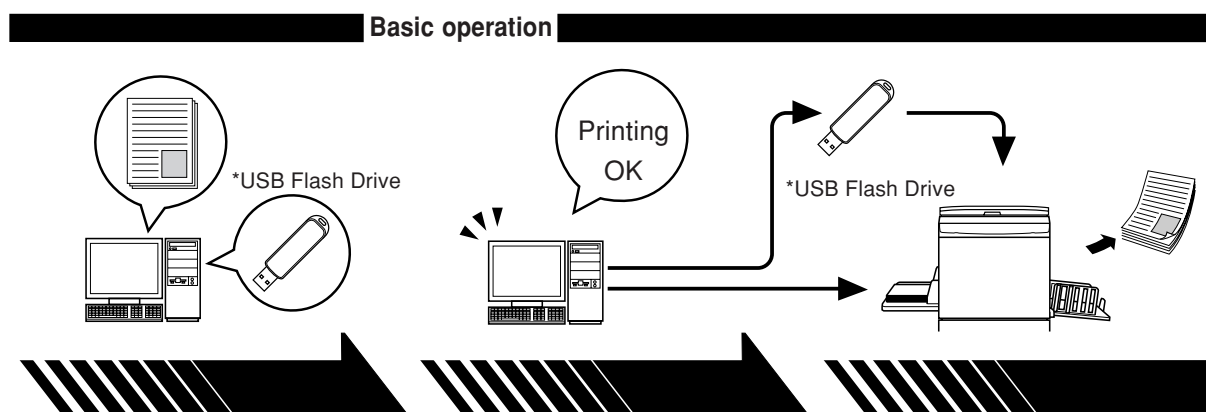
OS Support

This Printer Driver supports following OS:

Windows® 2000*¹/Windows® XP (32-bit)/Windows Vista® (32-bit/64-bit)/
Windows® 7 (32-bit/64-bit)/Windows® 8 (32-bit/64-bit)*²/
Windows® 8.1 (32-bit/64-bit)*²/Windows® 10 (32-bit/64-bit)*²

*¹ This operating system is not available for KZ.

*² Only compatible with desktop app.



2. Setting

Open the data you want to print out with your computer, select your Printer Driver (or the USB flash-via-Printer Driver) and make settings for printing.

To print from a *USB Flash Drive, connect the USB Flash Drive to your computer.

3. Printing

Open the [Print] dialog box on your PC and click [OK]. The data is transmitted to the printer or stored in the *USB Flash Drive.

4. Completion of printing

The printer receives the data and makes master and prints out the data.

To print from a *USB Flash Drive, connect the USB Flash Drive to the printer.

*Only EZ5 series has a feature of printing with USB Flash Drive.

Connecting Methods and Printer Driver types

The types of Printer Drivers are as follows:

Printer Driver

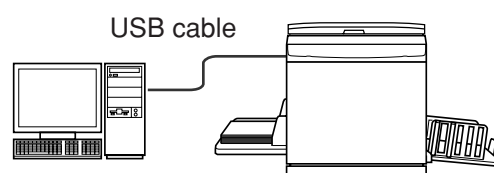
USB flash-via-Printer Driver

Choose the Printer Driver to install according to your environment.

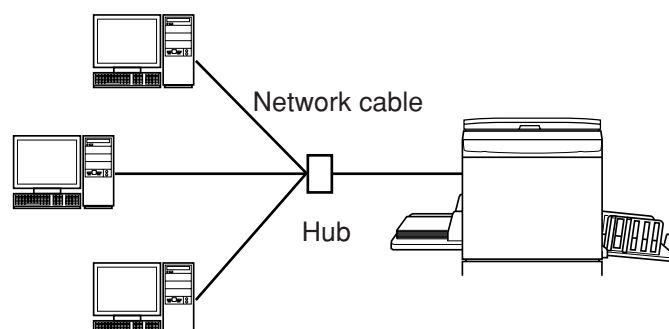
■ The environment for being connected via cable

In the following environment, the Printer Driver should be used.

● When connected via USB cable [Page 9](#)



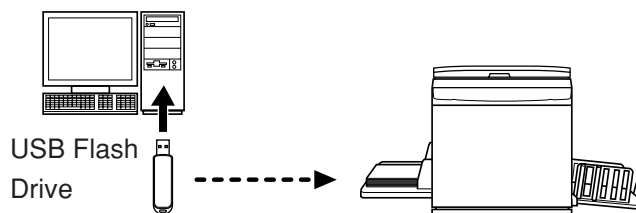
● When connected via network [Page 25](#)



This option is not available for KZ.

■ The environment for not being connected via cable [Page 36](#)

Save the data to the USB Flash Drive by using the USB flash-via-Printer Driver. Connect the USB Flash Drive to the printer to print out the data.



- NOTE**
- Even in the environment where the printer and your computer are connected via cable, the data can be printed by using USB Flash Drive.
 - USB Flash Drive cannot be used for the EZ3/EZ2/KZ series.

Table of Contents

Preface	2
Procedure before printing	3
Connecting Methods and Printer Driver types	5
Table of Contents	6

Installing the Printer Driver

■ USB Connection	9
Installing the Printer Driver	9
Creating a USB port	23
USB Device Association	24
■ Network Connection	25
Connecting with PC	25
Installing the Printer Driver	26
■ USB Flash Drive Output	36
About USB Flash Drive	36
Installing the USB flash-via-Printer Driver	36
Create a Folder	42
Printing a test page	43

Working with the Printer Driver

■ Changing the Printer Driver Configuration ...	46
■ Sending and Printing Data	51
■ Setting the Print Conditions	54
[Guide] Tab	55
[Image] Tab	63
[Extensions] Tab	66
■ Creating a RISORINC-format file	69
Creating RISORINC Files Using the Layout Feature	71

Uninstalling the Printer Driver

■ Uninstall the Printer Driver	73
---	-----------

Manually installing / uninstalling the Printer Driver

For Windows 2000 / Windows XP	
■ Manual installation	78
In the case of connection via USB cable	78
In the case of network connection / USB Flash Drive output	79
■ Manual uninstallation	80
For Windows Vista	
■ Manual installation	81
In the case of USB cable connection	81
In the case of network connection / USB Flash Drive output	82
■ Manual uninstallation	84

For Windows 7

■ Manual installation 85

In the case of USB cable connection 85

In the case of network connection /

USB Flash Drive output 86

■ Manual uninstallation 88

For Windows 8/Windows 8.1

■ Manual installation 89

In the case of USB cable connection 89

In the case of network connection /

USB Flash Drive output 90

■ Manual uninstallation 92

For Windows 10

■ Manual installation 93

In the case of USB cable connection 93

In the case of network connection /

USB Flash Drive output 94

■ Manual uninstallation 96

Appendix

Troubleshooting Tips 98

Error Message on PC's Display 98

Operation Problems 99

Installing the Printer Driver

The method of installing the Printer Driver using the installer is described here.

■ USB Connection	9
Installing the Printer Driver	9
Creating a USB port	23
USB Device Association	24
■ Network Connection	25
Connecting with PC	25
Installing the Printer Driver	26
■ USB Flash Drive Output	36
About USB Flash Drive	36
Installing the USB flash-via-Printer Driver ...	36
Create a Folder	42
Printing a test page	43

■ USB Connection

Installing the Printer Driver

This section describes how to install the Printer Driver for windows supporting the Plug&Play installation when your computer and the RISO printer are connected via USB cable.

IMPORTANT!

- You are required to have the administrator's privilege to install the printer driver program in your computer.
- This Printer Driver does not support server OS or printer sharing.
- Use a commercially available USB cable (Hi-speed USB, 3m or less).

For Windows Vista/Windows 7/Windows 8/Windows 8.1/Windows 10
To update the Printer Driver, change cable connections or reinstall a Printer Driver of the same series, deletion of the driver package is required. Uninstall the installed Printer Driver manually before new installation. "Manual uninstallation" ([Page 84](#))

0

Make sure that the printer is turned off and that the computer and printer are not connected by a USB cable.

IMPORTANT!

At some point during the installation procedure (step 7/8) you will need to connect the USB cable and turn the printer on.

For Windows Vista(64-bit)/Windows 7(64-bit), create a USB port ([Page 23](#)) in advance.

1

Insert the [RISO Printer Driver] CD-ROM into your computer's CD-ROM drive.

The installer is started. If the installer does not start up, double-click on the [Setup(.exe)] file in the folder below.

For Windows (32-bit):

(CD-ROM):[Windows 32-bit] folder

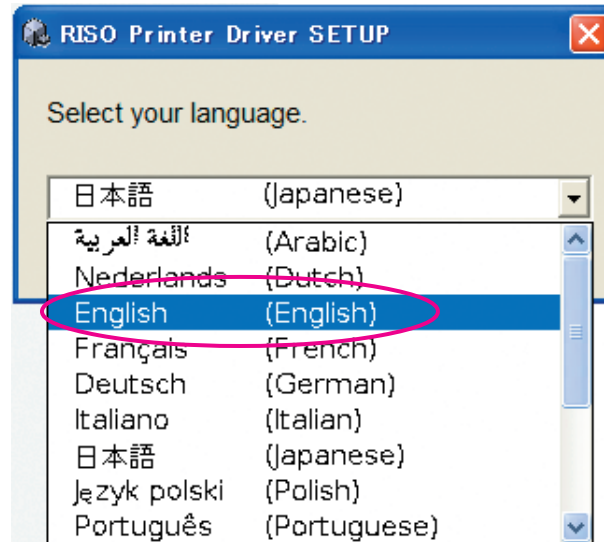
For Windows (64-bit):

(CD-ROM):[Windows 64-bit] folder

NOTE If the [User Account Control] dialog appears, click [Yes] or [Allow] (for Windows Vista).

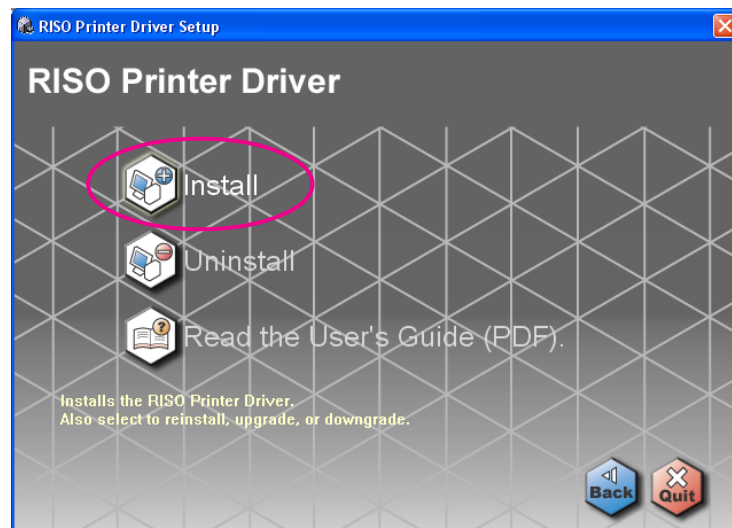
2

Select your language from the drop-down list, then click [OK].



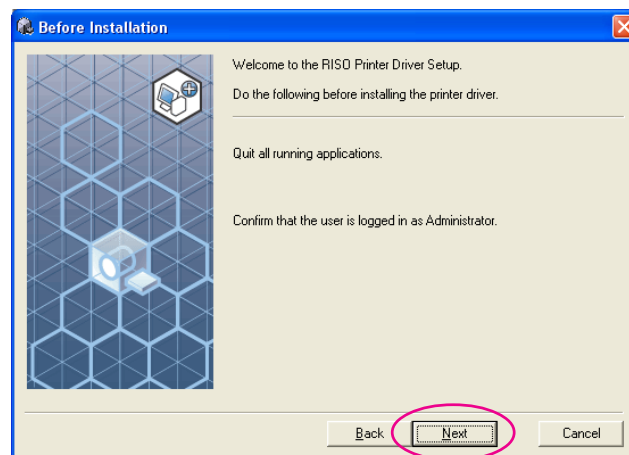
3

Click [Install].

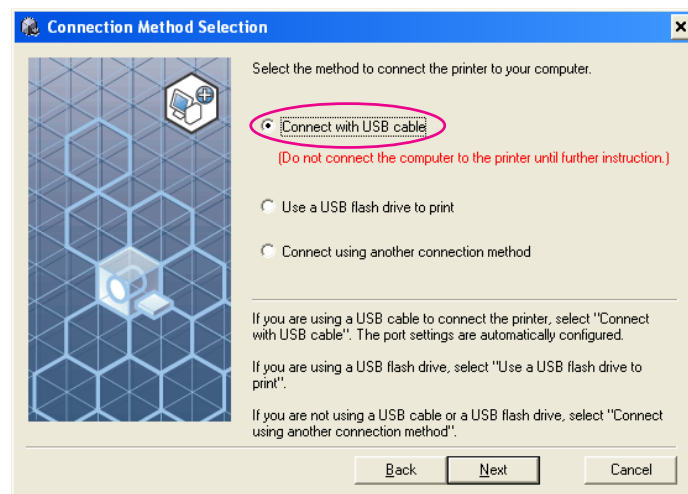
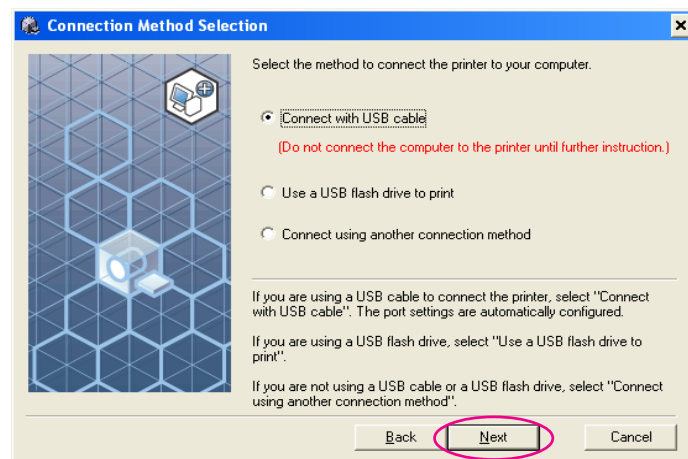


4

Click [Next].

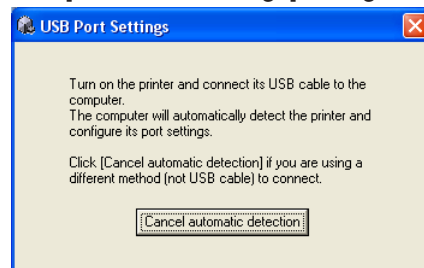


For Windows Vista(64-bit) or Windows 7(64-bit), go to Step 18 (Page 16).

5**Select [Connect with USB cable].****6****Click [Next].**

For Windows 8/Windows 8.1/Windows 10, go to Step [25](#) (Page 19).

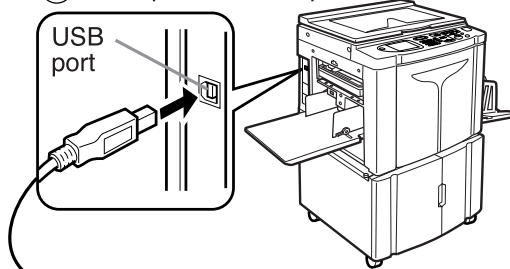
The [USB Port Settings] dialog box appears.

**7****Turn on the RISO printer.**

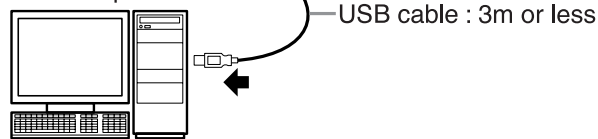
8

Connect the computer to the RISO printer with a USB cable (Hi-Speed USB, 3 m or less).

① To the printer's USB port

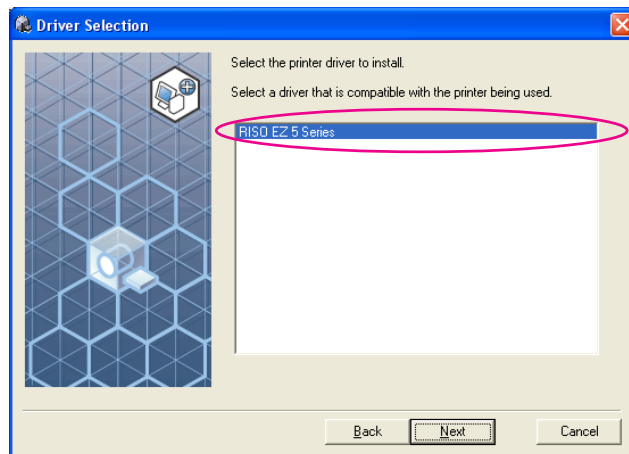


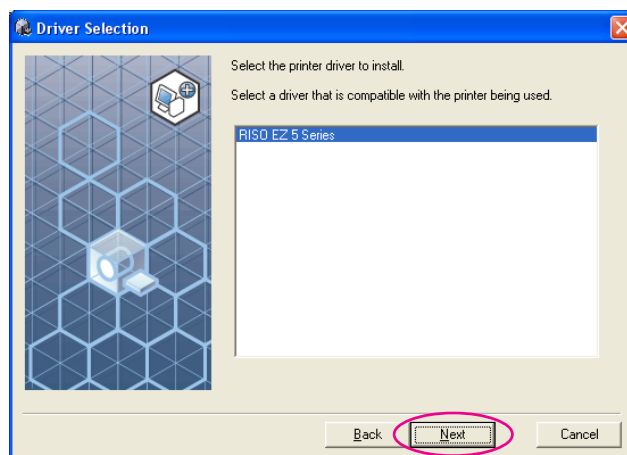
② To the PC's USB port



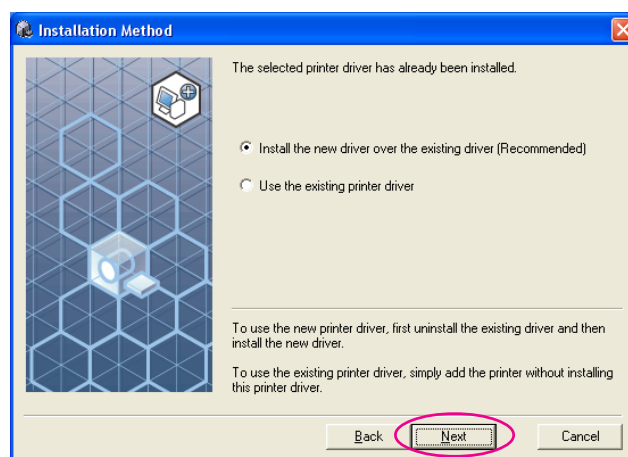
9

Select the printer name you just connected.

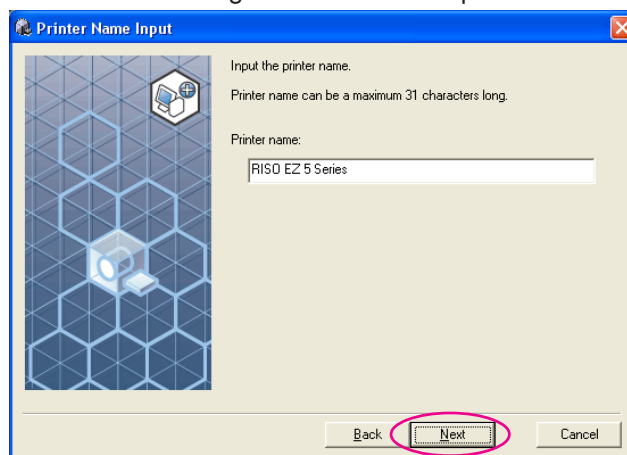


10**Click [Next].**

NOTE When selected Printer Driver has already been installed in Windows 2000/Windows XP, [Installation Method] dialog appears. Click [Next].

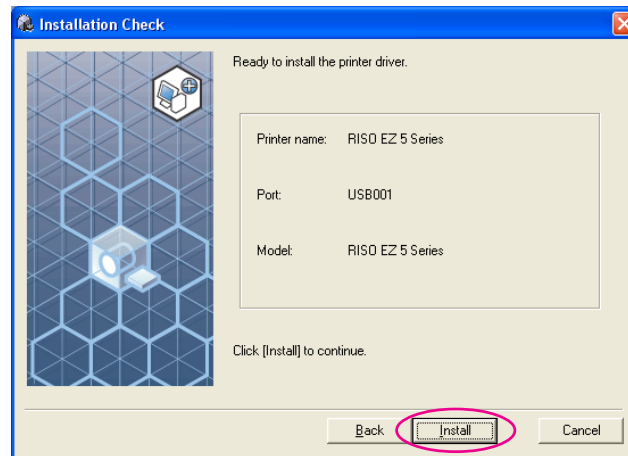
**11****Click [Next].**

You can also change the name of the printer.



12

Click [Install].

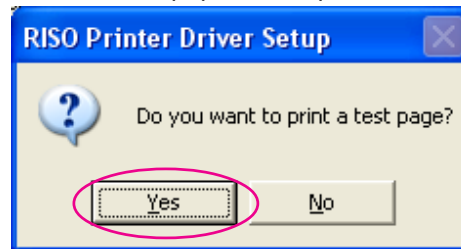


NOTE When the [Digital Signature Not Found], [Windows Logo Approval Test] or [Windows Security] dialog appears, continue with installation.

13

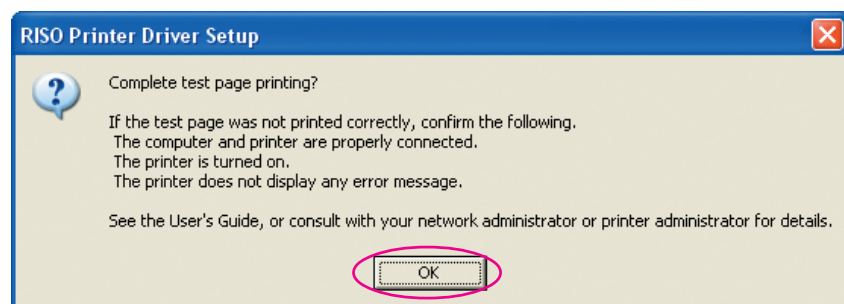
[Do you want to print a test page?] appears, then click [Yes].

Set A4/Letter paper in the printer beforehand.



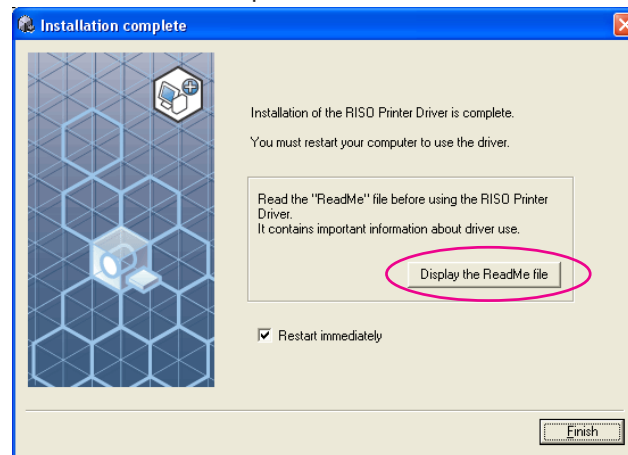
14

Check the test print was properly printed and click [OK].

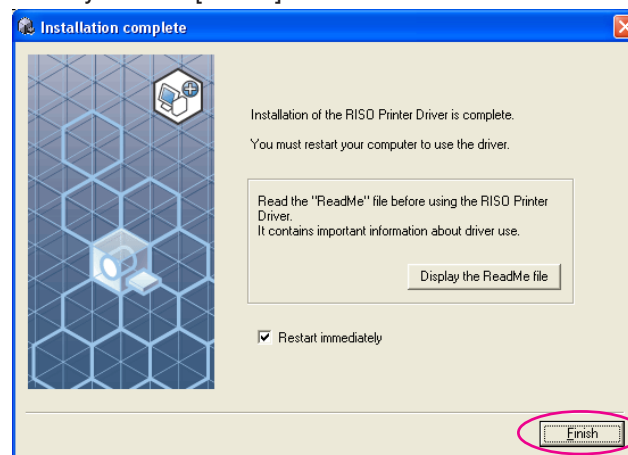


15**Click [Display the ReadMe file].**

The ReadMe file is opened. Be sure to read all the instructions and notes on it.

**16****Click [Finish].**

Be sure to restart the computer before using the Printer Driver. If you have checked [Restart immediately], the computer will be shut down and restarted when you click [Finish].



NOTE When [Found New Hardware Wizard] is displayed, click [Cancel].

17

Then remove the [RISO Printer Driver] CD-ROM from the CD-ROM drive of your computer.

IMPORTANT!

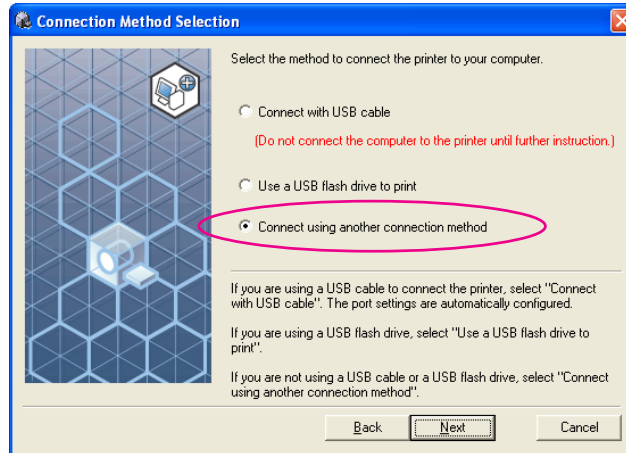
Keep the removed CD-ROM at hand.

Printer driver installation is now completed.
If using Windows Vista(64-bit)/Windows 7(64-bit), associate USB Devices
([Page 24](#)) continuously.

For Windows Vista(64-bit) or Windows 7(64-bit)

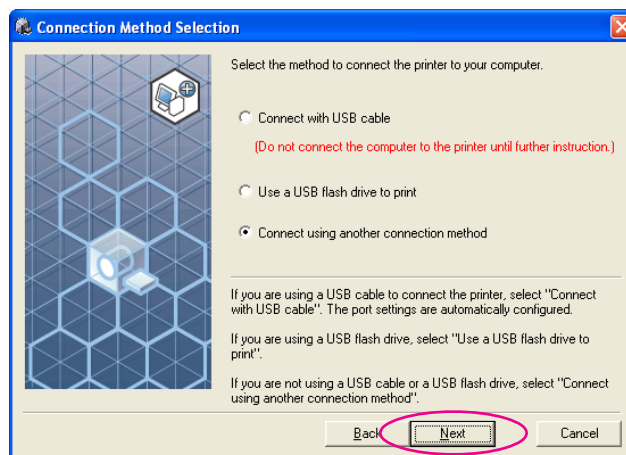
18

Select [Connect using another connection method].



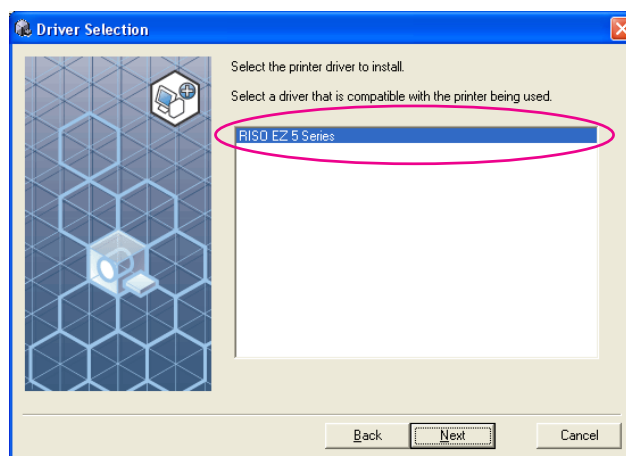
19

Click [Next].



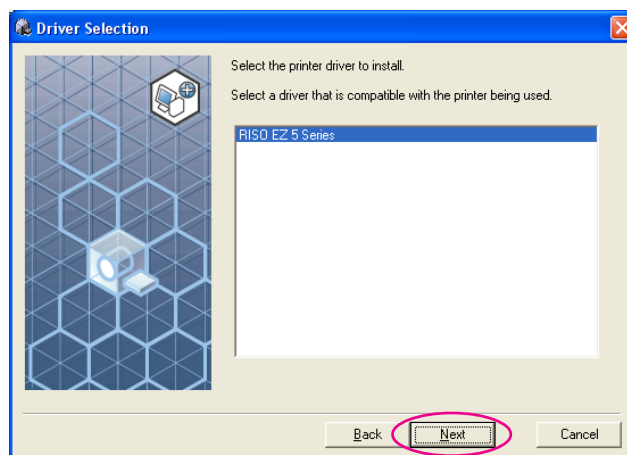
20

Select the printer name you just connected.

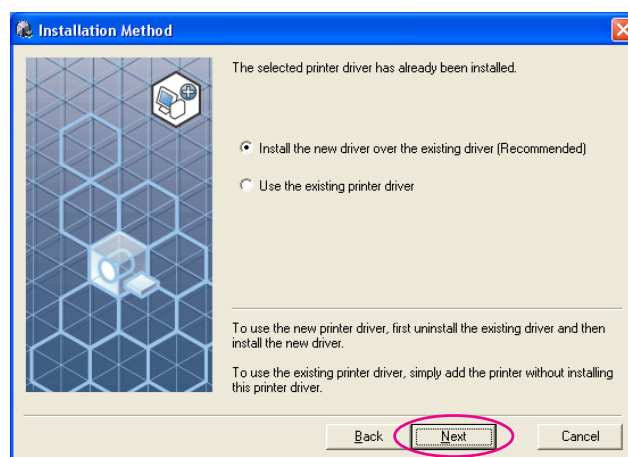


21

Click [Next].



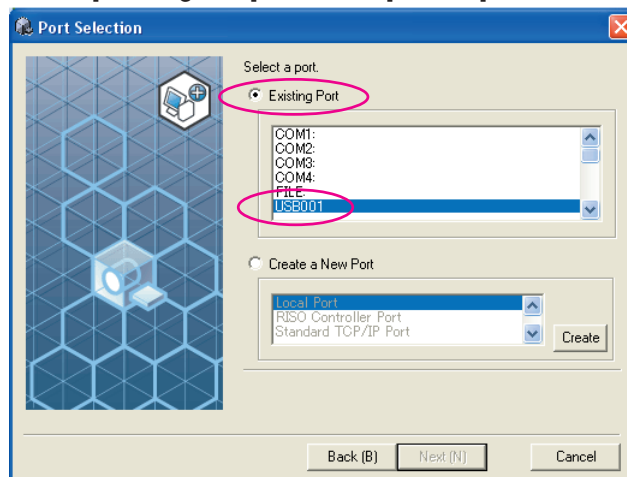
NOTE When selected Printer Driver has already been installed, [Installation Method] dialog appears. Click [Next].



22

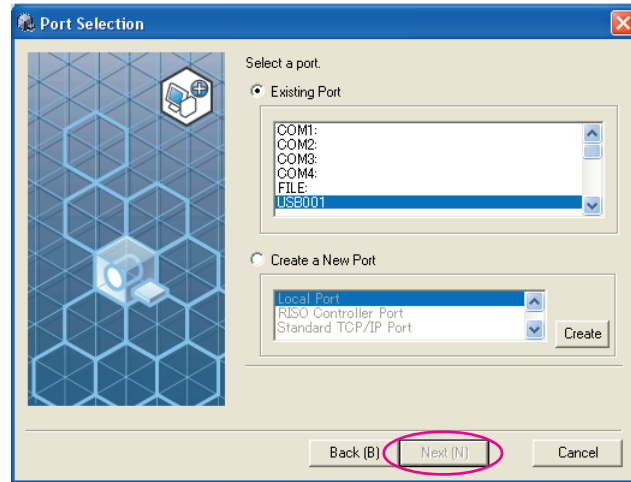
Select a USB port.

Select [Existing Port], and then [USB***].



23

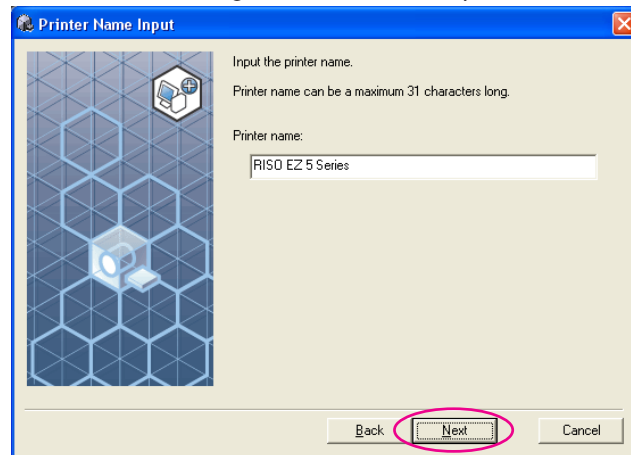
Click [Next].



24

Click [Next].

You can also change the name of the printer.

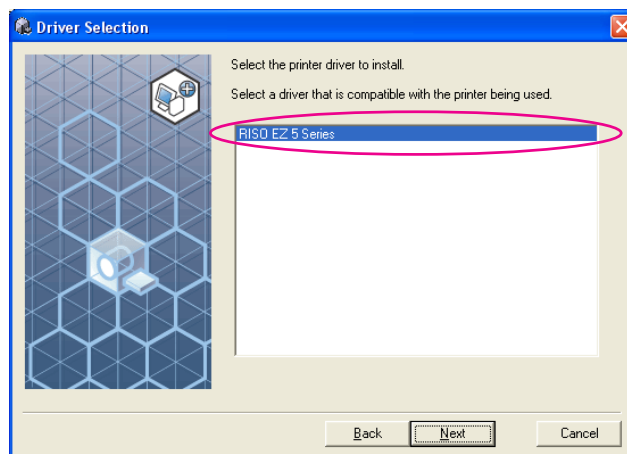


Return to Step **12** (Page 14).

For Windows 8/Windows 8.1/Windows 10

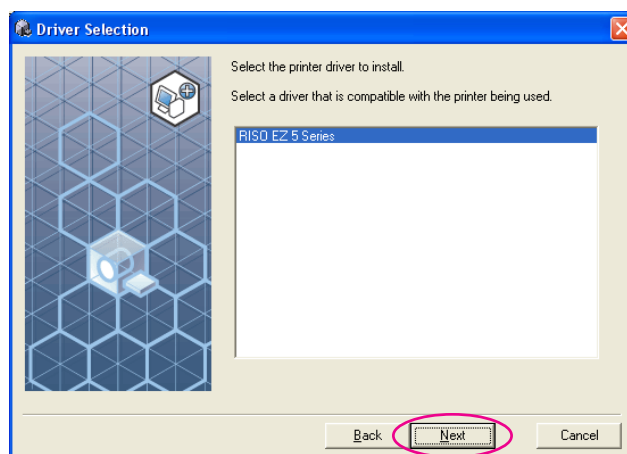
25

Select the printer name you just connected.



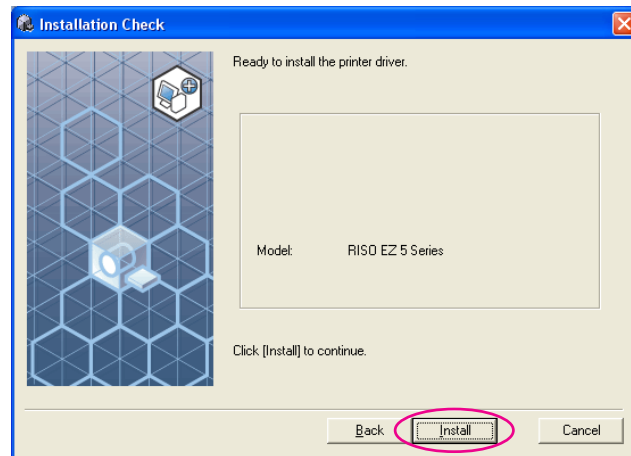
26

Click [Next].



27

Click [Install].

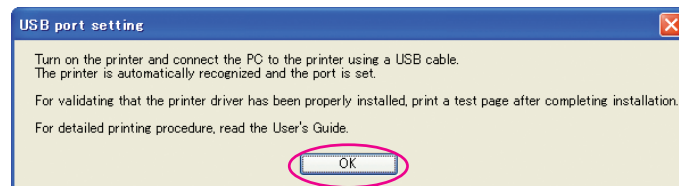


NOTE [Windows Security] dialog appears, continue with installation.

The [USB Port Settings] dialog box appears.

28

Click [OK].



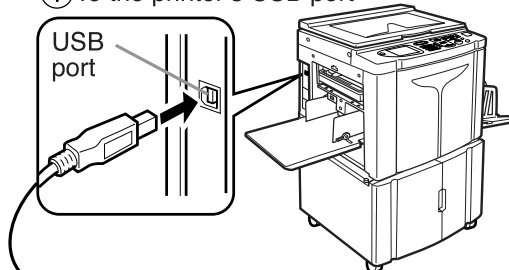
29

Turn on the RISO printer.

30

Connect the computer to the RISO printer with an USB cable (Hi-Speed USB, 3 m or less).

① To the printer's USB port



② To the PC's USB port

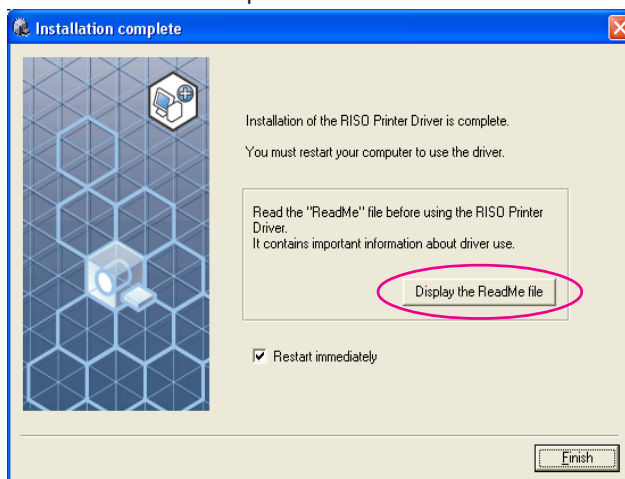


USB cable : 3m or less

31

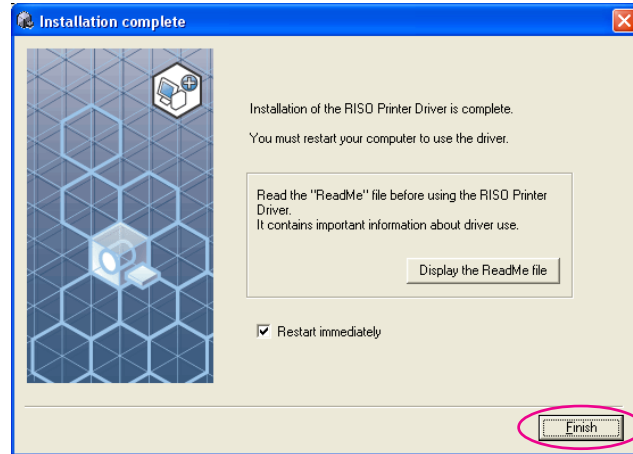
Click [Display the ReadMe file].

The ReadMe file is opened. Be sure to read all the instructions and notes on it.



32**Click [Finish].**

Be sure to restart the computer before using the Printer Driver. If you have checked [Restart immediately], the computer will be shut down and restarted when you click [Finish].

**33****Open the print folder.**

Open the “Apps” screen and click [Control Panel]-[Hardware and Sound]-[Devices and Printers].

34**Open the properties of the printer to which the Printer Driver has been installed.**

Right-click on the icon of the printer, and select [Printer Properties] in the displayed menu.

35**Click [Print Test Page].****36****When a message appears, wait for a few seconds and click [Close].****37****Then remove the [RISO Printer Driver] CD-ROM from the CD-ROM drive of your computer.****IMPORTANT!**

Keep the removed CD-ROM at hand.

Printer driver installation is now completed.

Creating a USB port

To install the printer driver in Windows Vista(64-bit) or Windows 7(64-bit) with the USB cable, it is necessary to create a USB Port and associate USB Devices.

IMPORTANT!

Create a USB port before installing the printer driver.

- 1** Turn the power of the printer on, and connect the USB cable to the printer.
- 2** Start your computer.
- 3** Connect the USB cable to your computer.
A USB port is automatically created. Check the USB port in Step **4** and after.

IMPORTANT!
Make sure that the message "Device driver software was not successfully installed" appears. This message appears in the dialog box for Windows Vista and in the task tray of Windows 7.

NOTE When "Found New Hardware Wizard" appears in Windows Vista, select "I'll recheck later."
- 4** Open [Print Server Property].
For Windows Vista:
 - ① Click on the [Start] icon-[Control Panel]-[Hardware and Sound] and [Printers] to open the [Printers] folder.
 - ② Right-click on a blank area in the folder to display the menu and select [Run as administrator] - [Server properties] from the menu.**For Windows 7:**
 - ① Click on the [Start] icon-[Control Panel]-[Hardware and Sound] and [Devices and Printers] to open the [Devices and Printers] folder.
 - ② Click on the existent printer and click [Print server properties] at the top of the window.
- 5** Click on the [Ports] tab and make sure that the [USB***] port is located in the [Ports on this server].
Record this port name because the name should be selected to install the printer driver.
- 6** Disconnect the USB cable from your computer.

USB Device Association

IMPORTANT!

Associate the USB device after installing the printer driver.

1

Connect the printer and your computer with a USB cable.

The USB device is automatically associated with your computer. Check the result of the USB device association in Step **2** and after.

2

Activate [Device Manager].

Click [Start] icon-[Control Panel]-[Hardware and Sound]-[Device Manager].

3

Click [View] in the menu and place a checkmark in the [Show hidden devices] checkbox.

4

Click [Printers] in the list and check that the newly installed printer is registered.

5

Open [Devices and Printers] and check that the newly installed printer is registered.

■ Network Connection

(This option is not available for KZ)

Connecting with PC

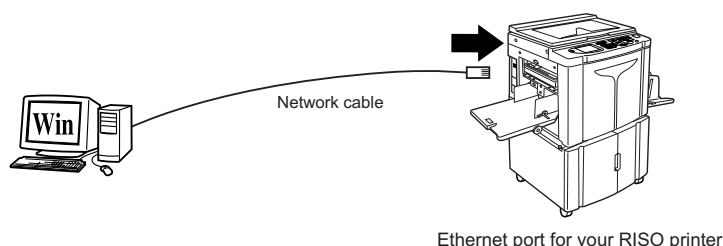
Optional network interface card, "RISO Network Card" is required when connecting the computer to the RISO printer through network to use as a network printer.

In advance, connect the RISO printer to the network and configure printer network settings (ex. IP address). For details, see RISO Network Card User's Guide (contained in RISO Network Card SOFTWARE CD-ROM). Use a commercially available Ethernet cable (10BASE-T or 100BASE-TX) appropriate for your network environment.

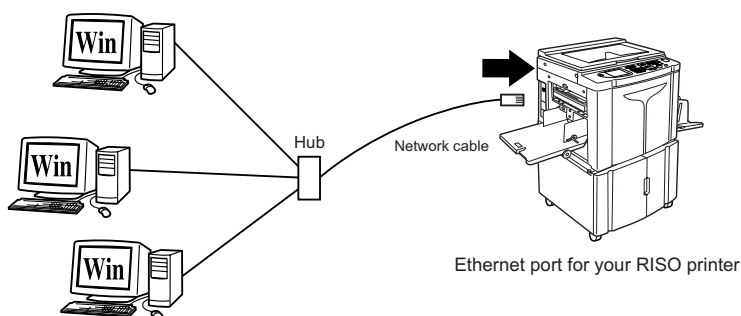
IMPORTANT!

Use an Ethernet cable specified with category 5 or more.

■ When your RISO printer is connected with one PC



■ When your RISO printer is connected on network



Installing the Printer Driver

This section describes how to install the RISO Printer Driver when the computer is connected to the RISO printer through network.

IMPORTANT!

- You are required to have the administrator's privilege to install the Printer Driver program in your computer.
- This Printer Driver does not support server OS or printer sharing.

1

Insert the [RISO Printer Driver] CD-ROM into your computer's CD-ROM drive.

The installer is started. If the installer does not start up, double-click on the [Setup(.exe)] file in the folder below.

For Windows (32-bit):

(CD-ROM):[Windows 32-bit] folder

For Windows (64-bit):

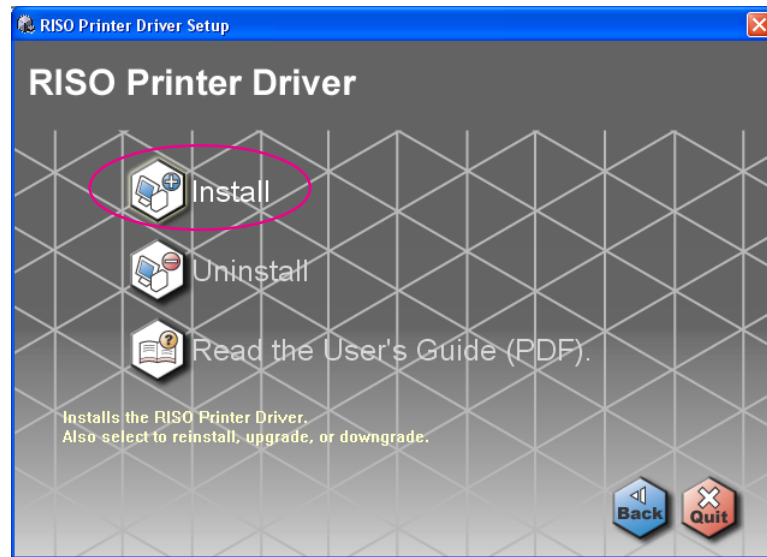
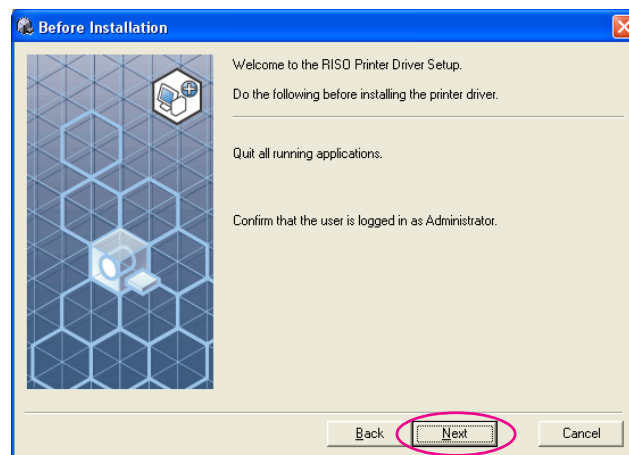
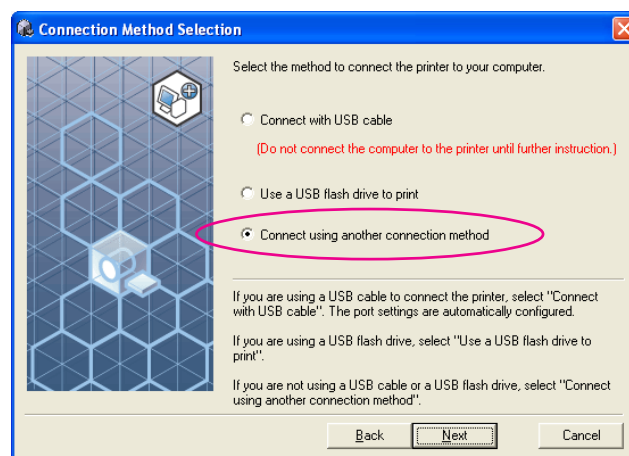
(CD-ROM):[Windows 64-bit] folder

NOTE If the [User Account Control] dialog appears, click [Yes] or [Allow] (for Windows Vista).

2

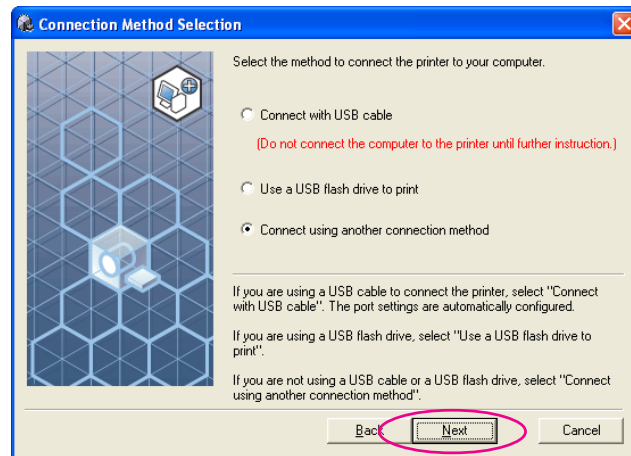
Select your language from the drop-down list, then click [OK].



3**Click [Install].****4****Click [Next].****5****Select [Connect using another connection method].**

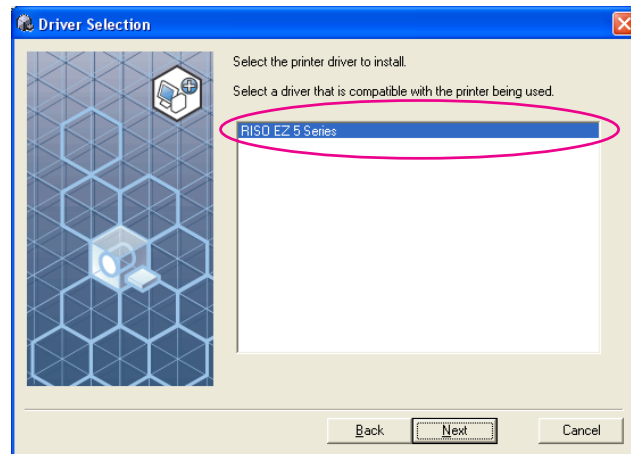
6

Click [Next].



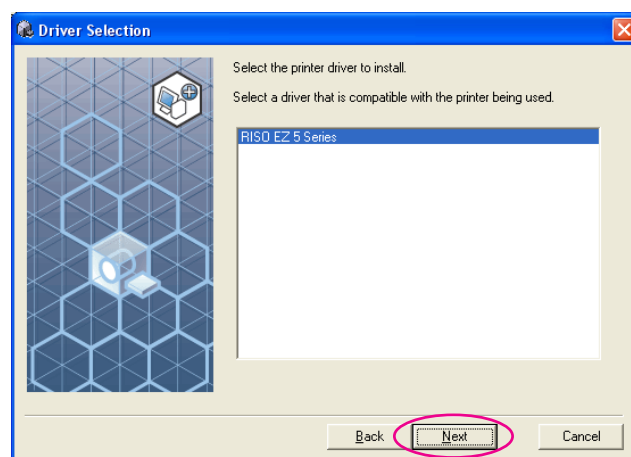
7

Select the printer name you just connected.

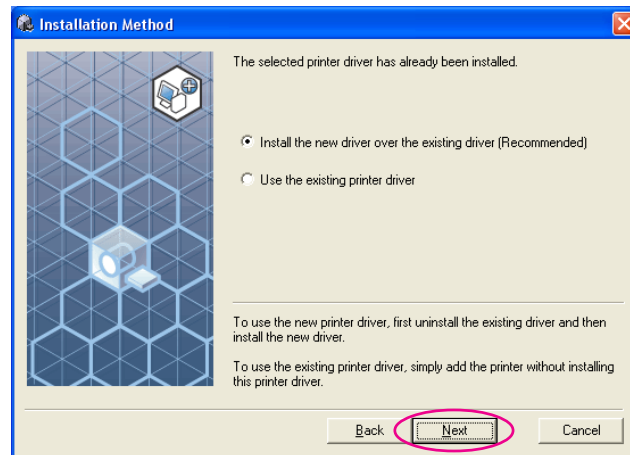


8

Click [Next].



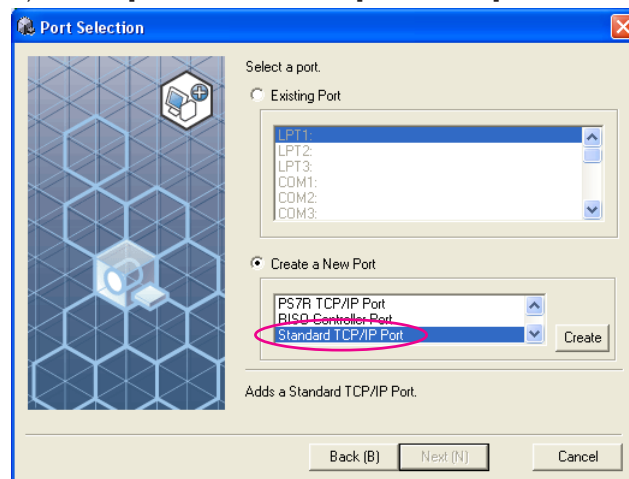
NOTE When selected Printer Driver has already been installed, [Installation Method] dialog appears. Click [Next].



9

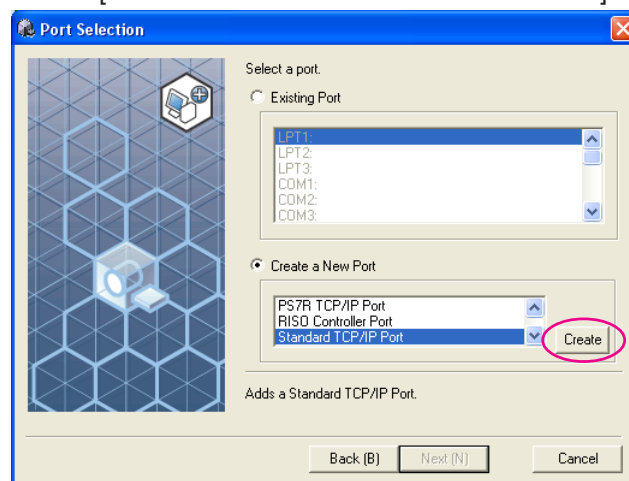
Add the network port.

1) Select [Create a New Port], and then [Standard TCP/IP Port].

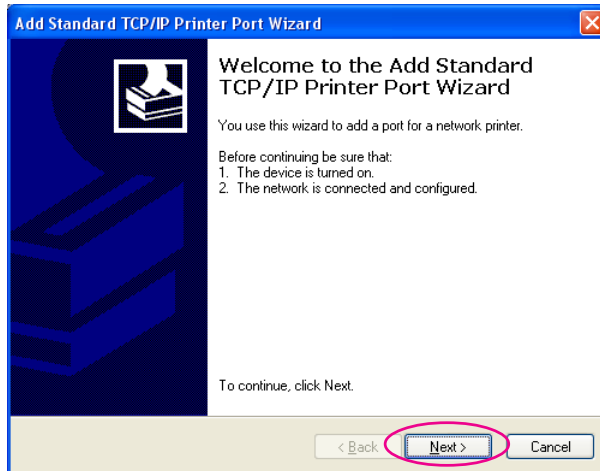


2) Click [Create].

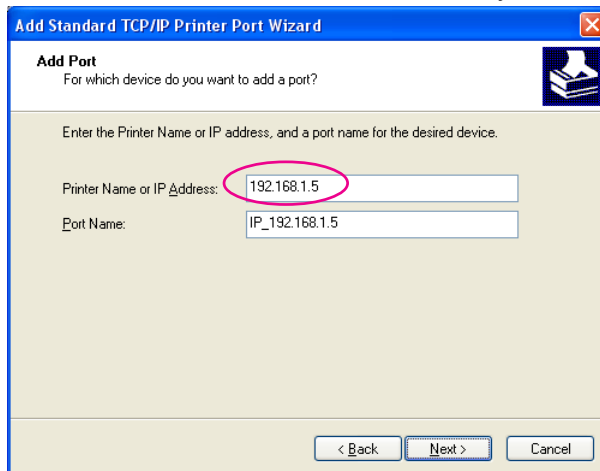
The [Add Standard TCP/IP Printer Port Wizard] dialog box appears.



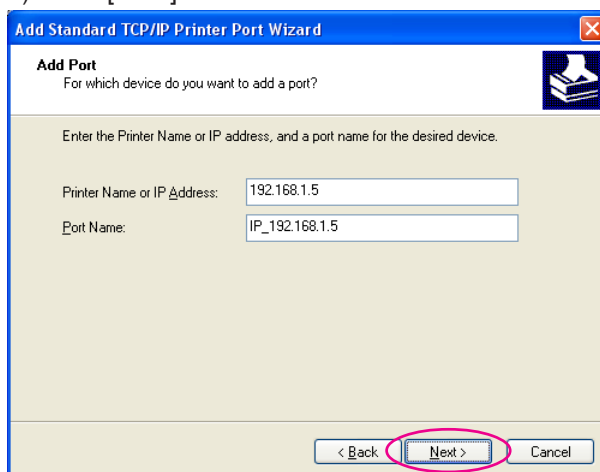
3) Click [Next].



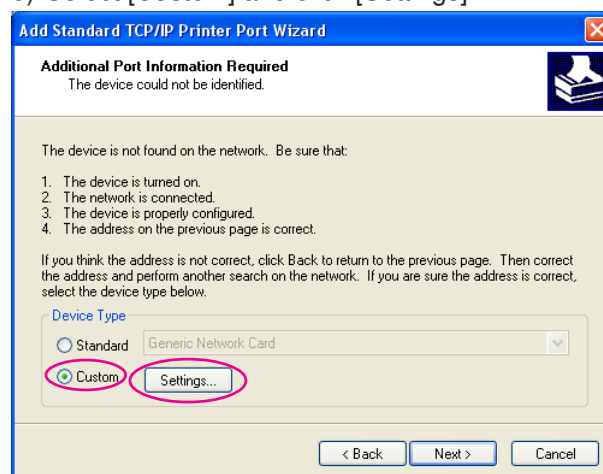
4) Enter the IP address of your printer.
Port name will be entered automatically.



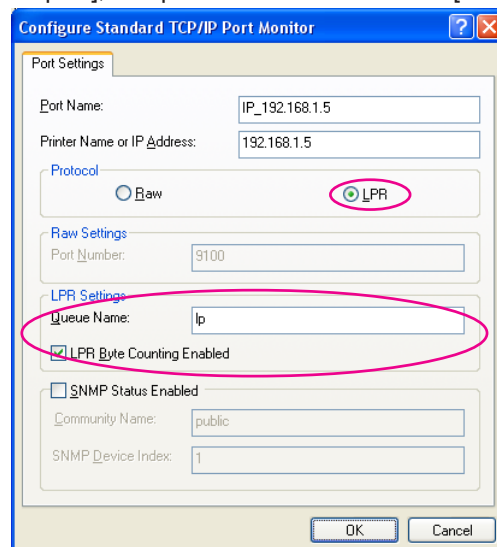
5) Click [Next].



6) Select [Custom] and click [Settings].



7) Select [LPR] for [Protocol], input "lp" as the [Queue Name] under [LPR port], and place a checkmark in the [LPR Byte Counting Enabled] checkbox.

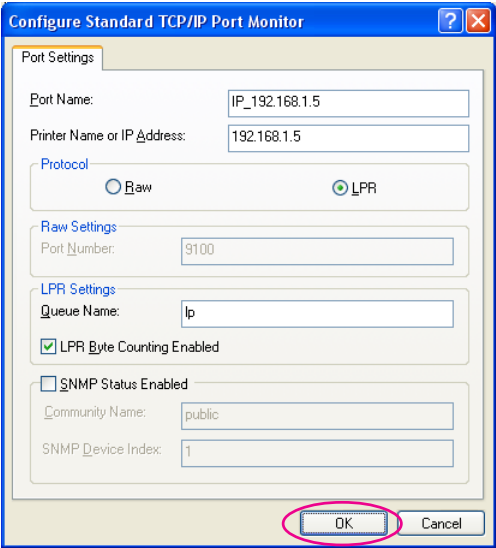


NOTE This installation procedure assumes that the RISO printer is connected to the network using the dedicated network interface card, RISO Network Card (option). When connecting to a commercial print server etc. on the network, refer to the instruction manual provided by the manufacturer. After the LPR function is added, your computer requires restarting. Therefore, be sure to store the necessary data in your computer before carrying out the operation. Follow the instruction manual of Windows OS or Help for details.

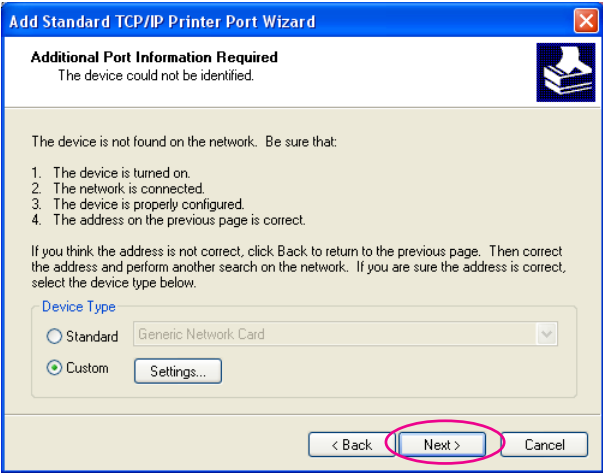
IMPORTANT!

The images may not be printed properly if [LPR Byte Counting Enabled] is not selected.

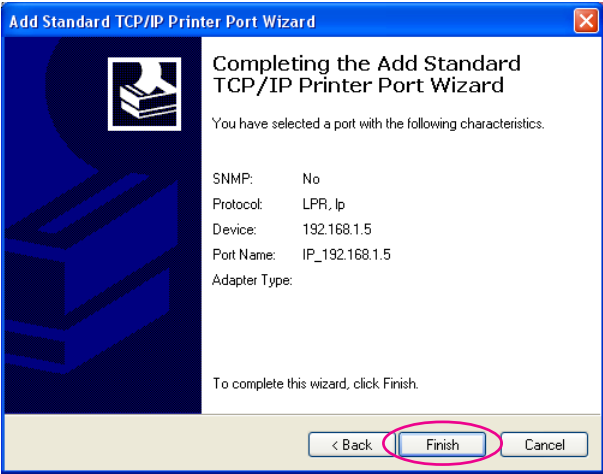
8) Click [OK].



9) Click [Next].

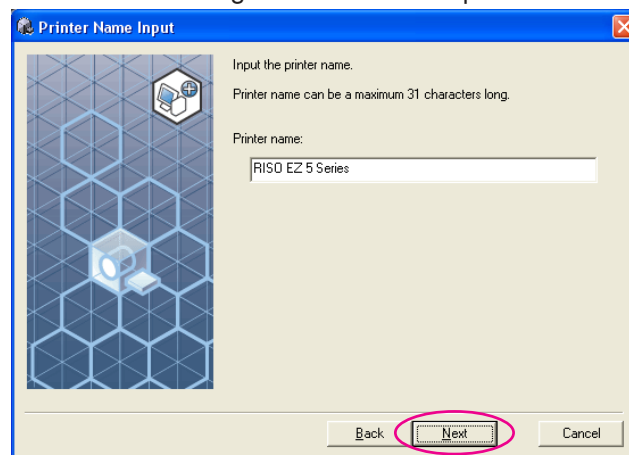
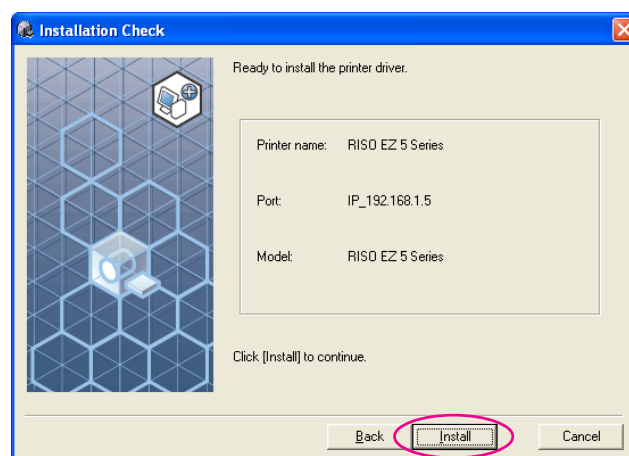


10) Click [Finish].



10**Click [Next].**

You can also change the name of the printer.

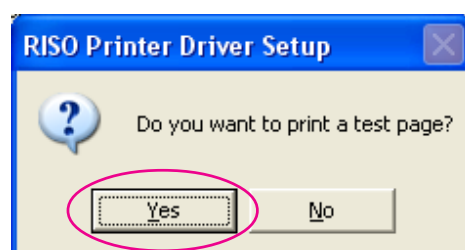
**11****Click [Install].**

NOTE When the [Digital Signature Not Found], [Windows Logo Approval Test] or [Windows Security] dialog appears, continue with installation.

12**[Do you want to print a test page?] appears, then click [Yes].**

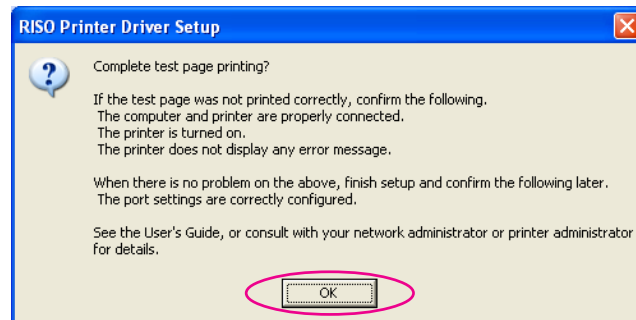
Set A4/Letter paper in the printer beforehand.

NOTE Load paper with the short edge first.



13

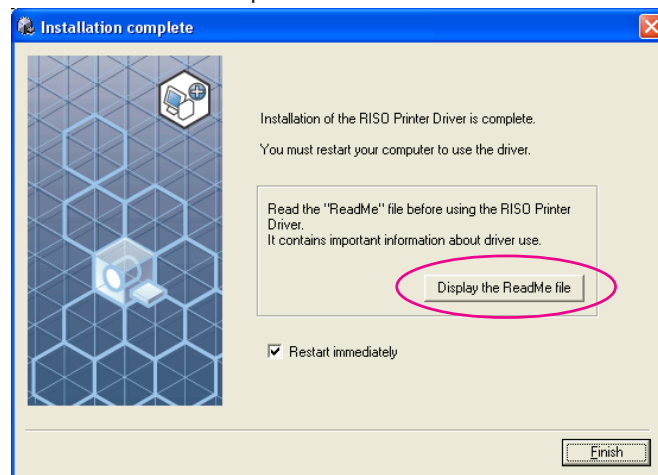
Check the test print was properly printed and click [OK].



14

Click [Display the ReadMe file].

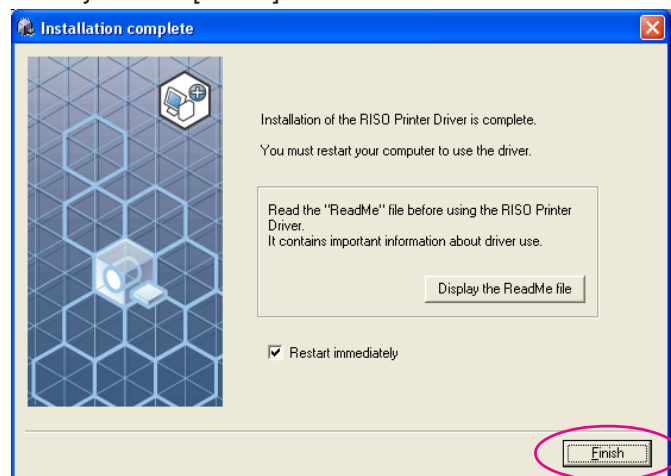
The ReadMe file is opened. Be sure to read all the instructions and notes on it.



15

Click [Finish].

Be sure to restart the computer before using the Printer Driver. If you have checked [Restart immediately], the computer will be shut down and restarted when you click [Finish].



16

Then remove the [RISO Printer Driver] CD-ROM from the CD-ROM drive of your computer.

IMPORTANT!

Keep the CD-ROM at hand.

■ USB Flash Drive Output (only for EZ5 series)

About USB Flash Drive

- Use USB Flash Drive of mass storage class. Depending on the type of USB Flash Drive, the Printer Driver may not work properly.
- When connecting or removing USB Flash Drive, insert it or pull it out slowly by using the correct method.
- When USB Flash Drive data is damaged by natural disaster or contingency, the data saved in the USB Flash Drive cannot be guaranteed. It is recommended to back up important data with your computer with which the data has been created.

Installing the USB flash-via-Printer Driver

This section describes how to install the USB flash-via-Printer Driver when using a USB Flash Drive to print.

(Regarding the procedure for manual installation, see [page 77.](#))

IMPORTANT!

- You are required to have the administrator's privilege to install the Printer Driver program in your computer.
- This Printer Driver does not support server OS or printer sharing.

1

Insert the [RISO Printer Driver] CD-ROM into your computer's CD-ROM drive.

The installer is started. If the installer does not start up, double-click on the [Setup(.exe)] file in the folder below.

For Windows (32-bit):

(CD-ROM):[Windows 32-bit] folder

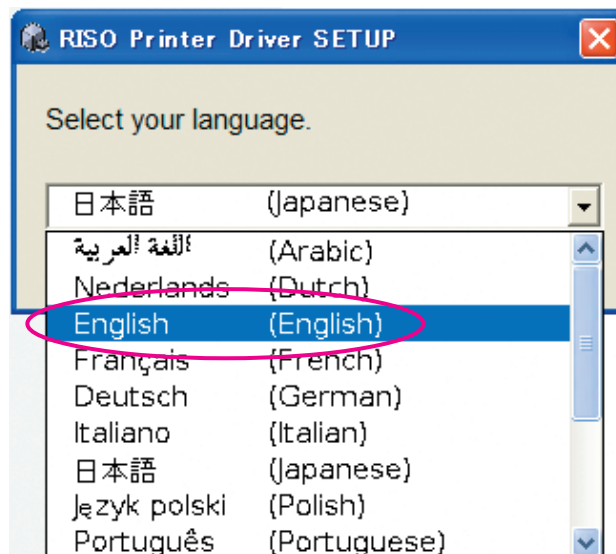
For Windows (64-bit):

(CD-ROM):[Windows 64-bit] folder

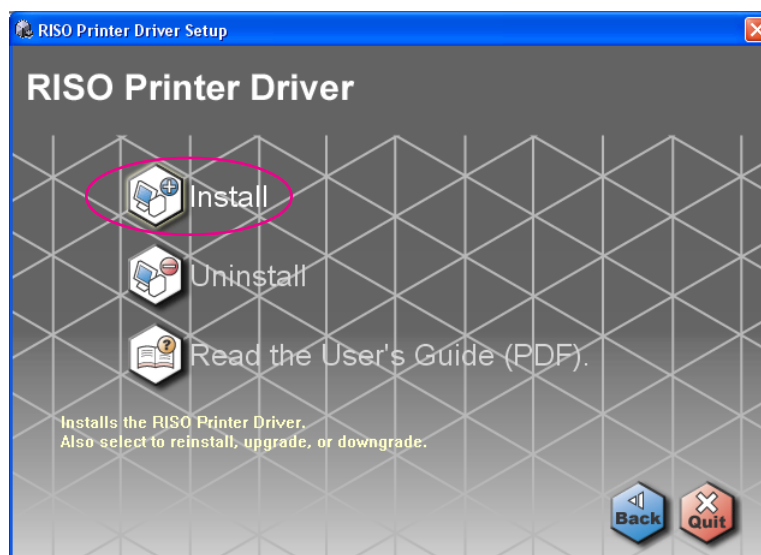
NOTE If the [User Account Control] dialog appears, click [Yes] or [Allow] (for Windows Vista).

2

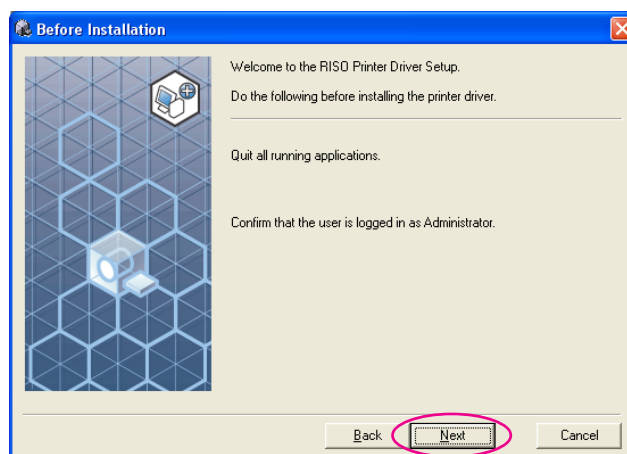
Select your language from the drop-down list, then click [OK].

**3**

Click [Install].

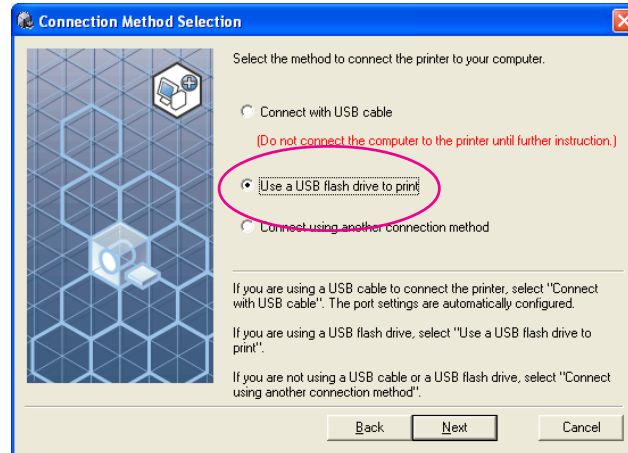
**4**

Click [Next].



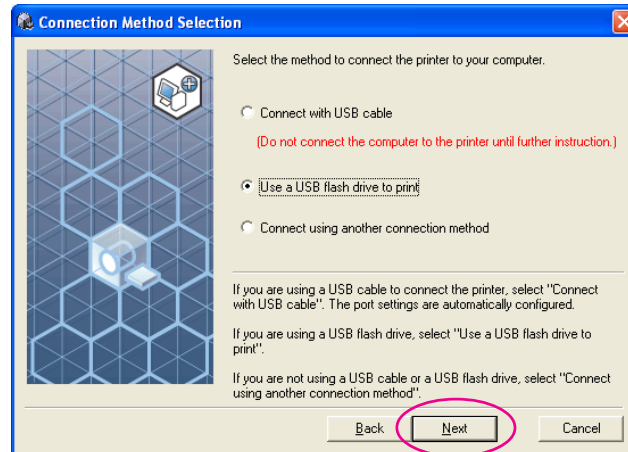
5

Select [Use a USB flash drive to print].



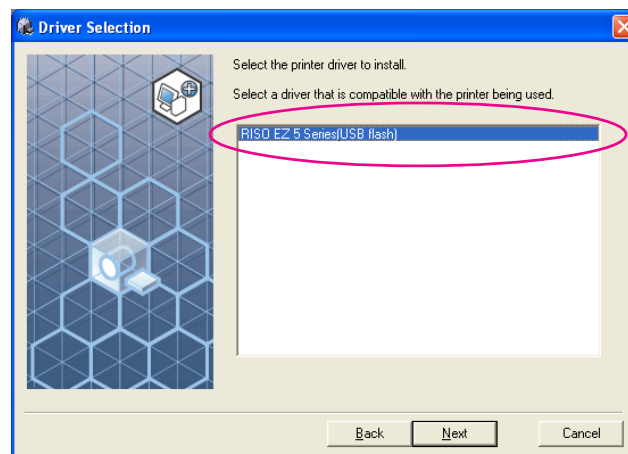
6

Click [Next].

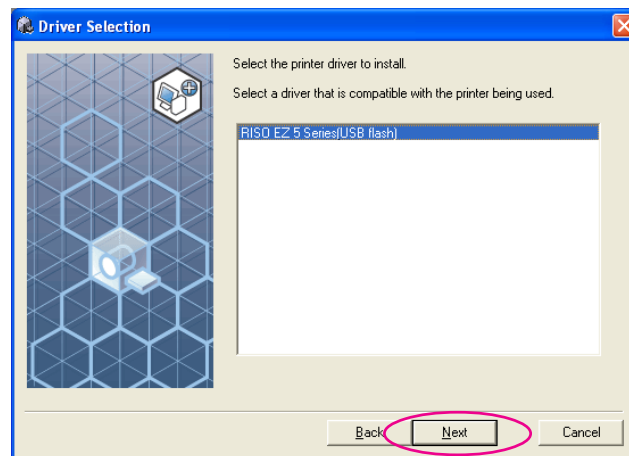


7

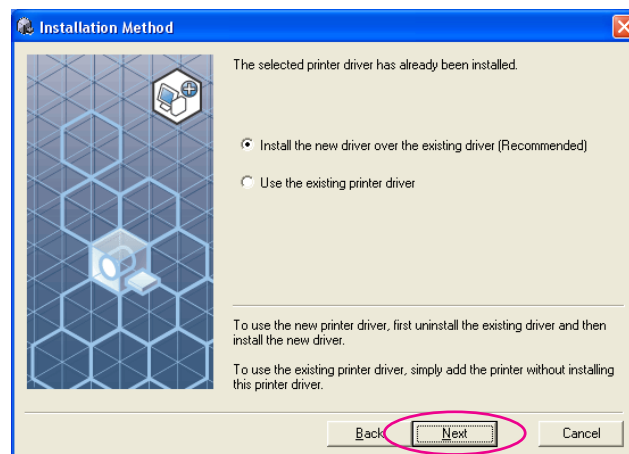
Select the printer name that has the part "USB flash" at the end.



8

Click [Next].

NOTE When the selected Printer Driver is already installed, "Installation Method" dialog box appears, click [Next].

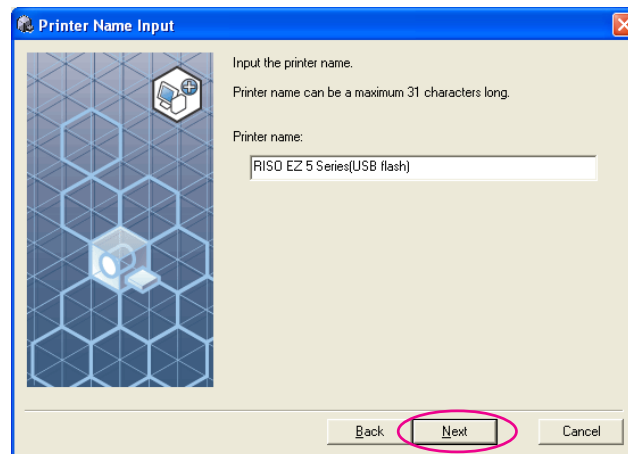


9

Click [Next].

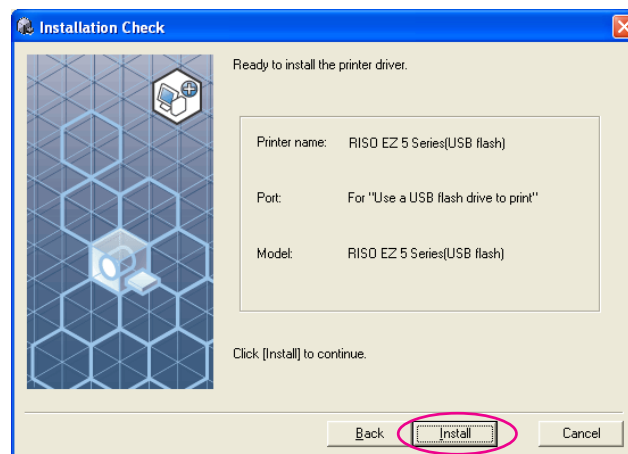
You can also change the printer name.

NOTE When changing the printer's name, we recommend to leave (USB flash) in the name.



10

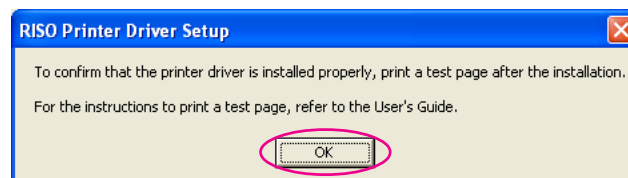
Click [Install].



NOTE When the [Digital Signature Not Found], [Windows Logo Approval Test] or [Windows Security] dialog appears, continue with installation.

11

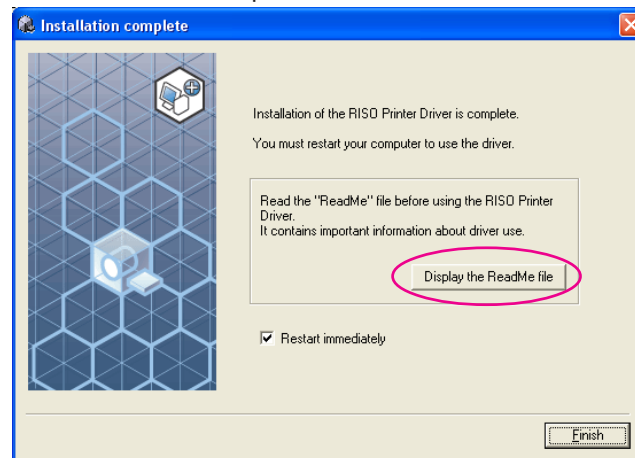
The following message appears, click [OK].



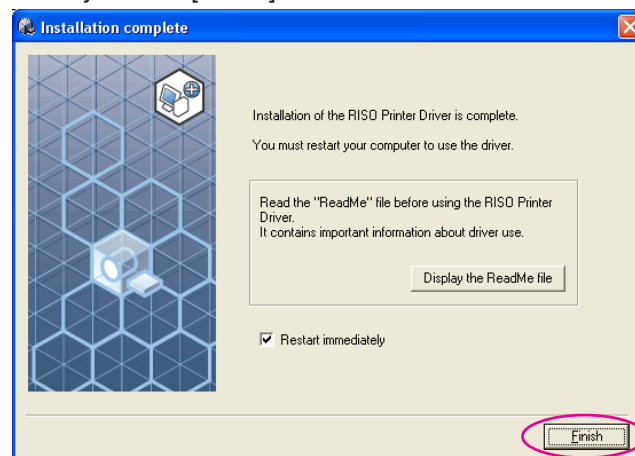
NOTE Please refer to "Create a Folder" and "Printing a test page" for output of test page on USB Flash Drive.

12**Click [Display the ReadMe file].**

The ReadMe file is opened. Be sure to read all the instructions and notes on it.

**13****Click [Finish].**

Be sure to restart the computer before using the Printer Driver. If you have checked [Restart immediately], the computer will be shut down and restarted when you click [Finish].

**14****Then remove the [RISO Printer Driver] CD-ROM from the CD-ROM drive of your computer.****IMPORTANT!**

Keep the removed CD-ROM at hand.

Printer driver installation is now completed.
Create a dedicated folder in USB Flash Drive continuously. ([Page 42](#))

Create a Folder

IMPORTANT!

When printing by using USB Flash Drive, be sure to create a dedicated folder in USB Flash Drive. Printing is disabled from the USB Flash Drive for which a dedicated folder has not been created.

NOTE Instead of the following procedure, you can create a dedicated folder by connecting USB Flash Drive to the printer.

1

Connect the USB Flash Drive to the computer.

2

Display the [Print] dialog box.

Open the original data to print on your computer, select [Print] from the [File] menu.

3

Select the printer to which the Printer Driver has been installed.

Be sure to select the USB flash-via-Printer Driver.

4

Click [Properties].

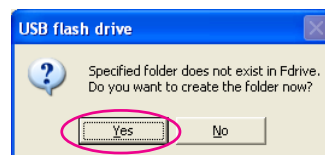
5

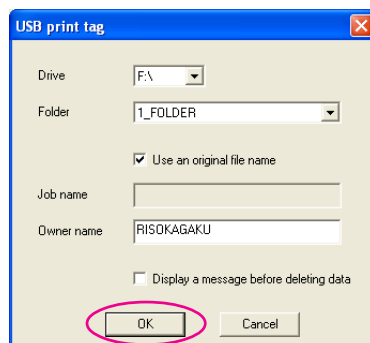
Check that [USB print] has been selected in [Destination], and click [Storage tag].

6

When a message appears, click [Yes].

The dedicated folder is created in the USB Flash Drive.



7**Click [OK].**

Next, print a test page.

IMPORTANT!

When changing the name of the folders in USB Flash Drive or moving the original data, use the RISO USB PRINT MANAGER.

For details, see the "RISO Utility Software User's Guide".

Printing a test page

IMPORTANT!

Use the USB Flash Drive for which a dedicated folder ([Page 42](#)) has been created in advance.

1**Open the print folder.****For Windows 2000/Windows XP:**

Select [Printers and Faxes] from the [Start] menu and open the [Printers and Faxes] folder.

For Windows Vista:

Click on the [Start] icon-[Control Panel]-[Hardware and Sound]-[Printers] and open the [Printers] folder.

For Windows 7:

Click on the [Start] icon-[Control Panel]-[Hardware and Sound]-[Devices and Printers] and open the [Devices and Printers] folder.

For Windows 8/Windows 8.1:

Open the "Apps" screen and click [Control Panel]-[Hardware and Sound]-[Devices and Printers] and open the [Devices and Printers] folder.

For Windows 10:

Right-click on the [Start] icon and click [Control Panel]-[Hardware and Sound]-[Devices and Printers] and open the [Devices and Printers] folder.

2**Open the properties of the printer to which the USB flash-via-Printer Driver has been installed.**

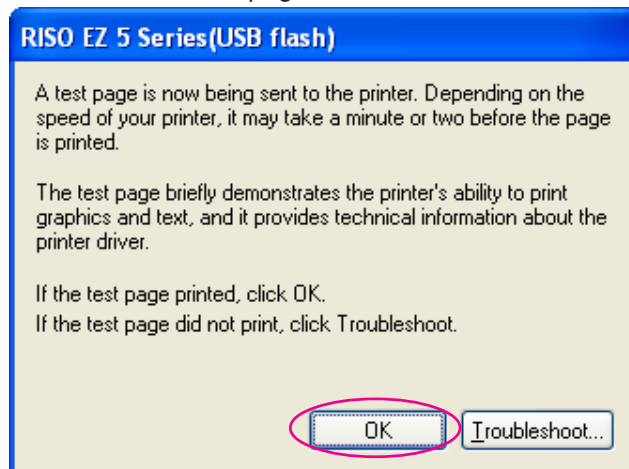
Right-click on the icon of the printer (USB flash), and select [Printer Properties] or [Properties] (for Windows 2000/Windows XP/Windows Vista) in the displayed menu.

3**Click [Print Test Page].**

4

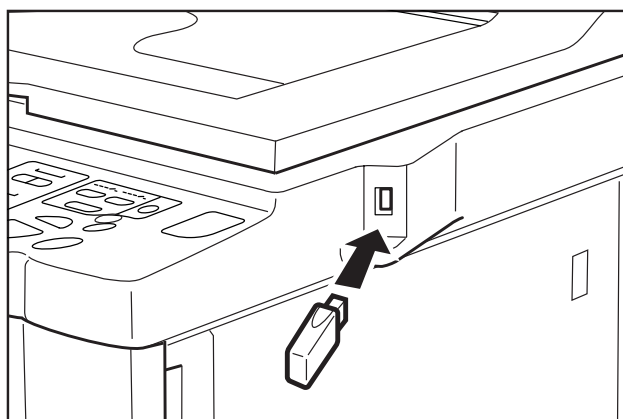
When a message appears, wait for a few seconds and click [OK].

The data of the test page is saved in USB Flash Drive.



5

Remove the USB Flash Drive from your computer, and connect it to the printer.

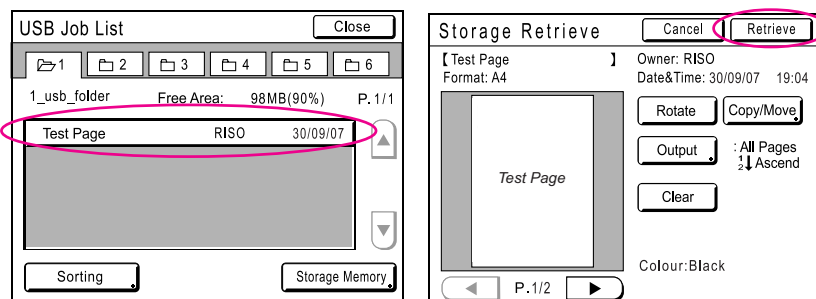


6

On the touch panel of the printer, touch [USB Job List].

7

Select [Test page] of [1_usb_folder], and touch [Retrieve].



8

Press the Start key.

Set A4/Letter paper in the printer beforehand.

A test page is printed.

NOTE Load paper with the short edge first.

Working with the Printer Driver

■ Changing the Printer Driver	
Configuration	46
■ Sending and Printing Data	51
■ Setting the Print Conditions	54
[Guide] Tab	55
[Image] Tab	63
[Extensions] Tab	66
■ Creating a RISORINC-format file	69
Creating RISORINC Files Using the Layout Feature	71

■ Changing the Printer Driver Configuration

For customized use, register optional devices, frequently-used custom paper size, print color, and color information. If you do not change the Printer Driver configuration, you will not be able to select the corresponding option when specifying the print conditions of your print job.

NOTE The screen shots of the Printer Driver shown here are taken from Printer Driver. (Not USB flash-via-Printer Driver)

1

Open the printer folder.

For Windows 2000/Windows XP:

Select [Printers and Faxes] from the [Start] menu and open the [Printers and Faxes] folder.

For Windows Vista:

Click on the [Start] icon-[Control Panel]-[Hardware and Sound]-[Printers] and open the [Printers] folder.

For Windows 7:

Click on the [Start] icon-[Control Panel]-[Hardware and Sound]-[Devices and Printers] and open the [Devices and Printers] folder.

For Windows 8/Windows 8.1:

Open the “Apps” screen and click [Control Panel]-[Hardware and Sound]-[Devices and Printers] and open the [Devices and Printers] folder.

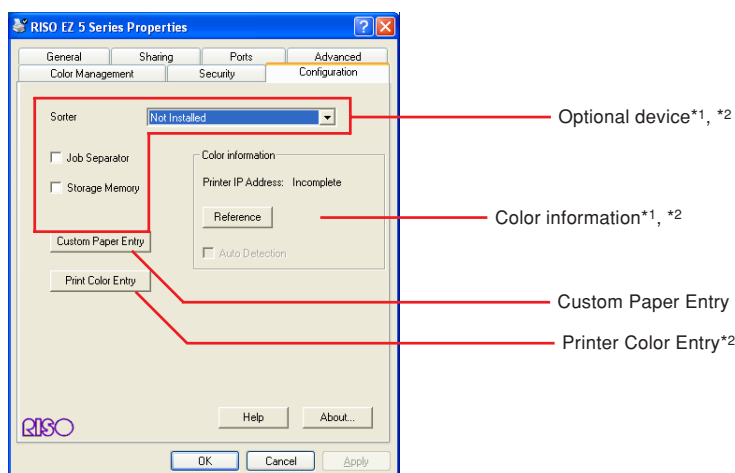
For Windows 10:

Right-click on the [Start] icon and click [Control Panel]-[Hardware and Sound]-[Devices and Printers] and open the [Devices and Printers] folder.

2

Open the [Configuration] tab of the [Properties] dialog box.

Right-click on the corresponding RISO printer icon in the Printer folder and select [Printer properties] or [Properties] (for Windows 2000/Windows XP/Windows Vista) in the displayed menu. Then click [Configuration] in the [Properties] dialog box.



*1 [Storage Memory] under [Optional device] and [Color information] do not appear in the USB flash-via-Printer Driver.

*2 [Optional device], [Print Color Entry] and [Color information] do not appear in KZ.

3**Select the optional devices with which your RISO printer is equipped.**

Mark the check boxes of the optional device concerned.

You cannot select this option without any optional devices connected.

Sorter*

Select the sorter which is connected to your RISO printer.

Job Separator

Select [On] if your RISO printer is equipped with the Job Separator.

Storage Memory* (USB flash-via-Printer Driver is not available)

Select [On] if your RISO printer is equipped with the Document Storage Card.

* This option is not available for EZ3/EZ2 series.

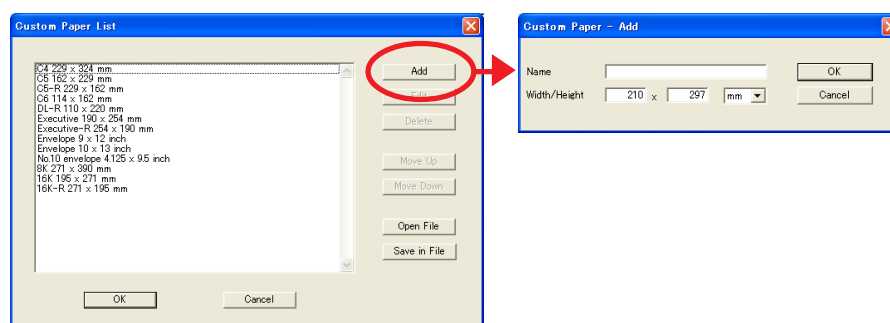
4**Register paper and colors when needed.****Registering Custom Paper Size as Standard**

You can register custom paper sizes as standard in the [Custom Paper List] dialog box, which can be opened by clicking [Custom Paper Entry] in the [Configuration] tab of the [Properties] dialog box. The custom paper sizes can be named and displayed in the standard paper size list of the [Guide] tab.

1) Click [Custom Paper Entry] to display the [Custom Paper List] dialog box.

2) Click [Add].

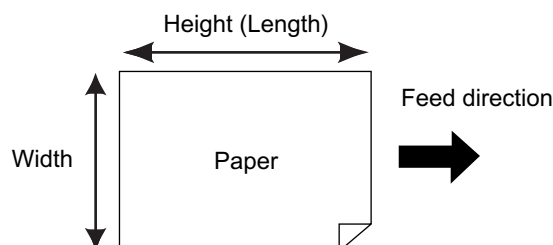
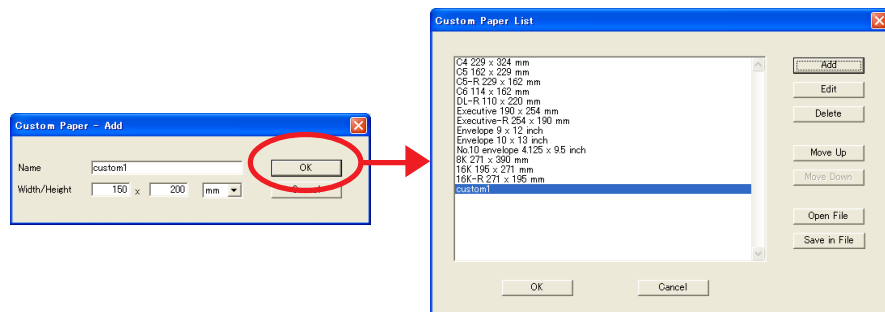
The [Customer Paper - Add] dialog box appears.



3) Enter the width, length and name and click [OK].

The registered name appears in the dialog box.

- NOTE**
- The length of the name can be up to 30 characters.
 - You can change the unit of length from “mm” to “inch”.



4) Click [OK].

The [Customer Paper - Add] dialog box is closed and the paper size name which has just been registered is added to the [Custom Paper List] dialog box.

You can save the information of your customer paper size as a Custom Paper Entry information file (.udp extension) by clicking [Save]. If you want to register the custom paper size from the Custom Paper Entry information file, click [Open] to select the file.

IMPORTANT!

Even if you use the paper types that are registered in the Custom Paper List, it may not pass through the machine depending on such factors as the paper quality, ambient conditions and storage conditions.

- NOTE**
- Entry of the name and dimensions will help you when you select the paper size.
 - The registrable paper size varies with the printer you use. For details, see the user's guide of your printer.
 - When changing the name and/or dimensions of a custom paper size, select the corresponding name from the list and click [Edit]. When deleting a custom paper size, select the corresponding name from the list and click [Delete].

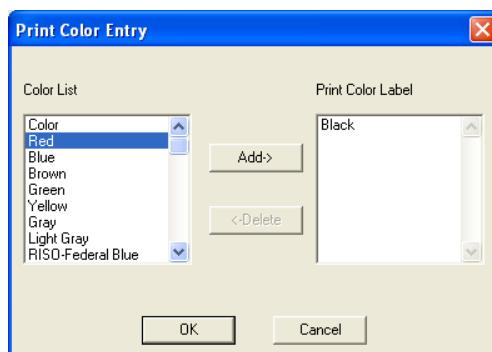
Register the Print Colors

Register the all print colors which your RISO printer can provide.

The print colors registered are displayed in the Print Color drop-down list in the [Guide] tab (See [page 55](#)).

* This option is not available for KZ.

- 1) Click [Print Color Entry] to open the [Print Color Entry] dialog box.
- 2) Select the colors you have on your RISO printer from the [Color List] in the [Print Color Entry] dialog box, and click [Add].



- 3) Click [OK].

Color Information (Network Connection only)

Make your choice for auto detection of color information.

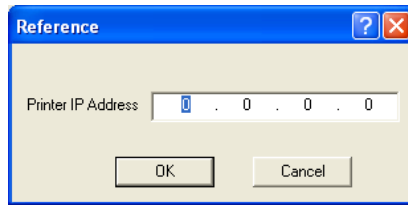
* This option is not available for KZ.

Check box selected : Detection of the color information of the print color mounted on the printer is made every time you open the printer's properties to reflect the information on the [Color Label] for the Printer Driver.

For printing process without opening the printer's properties, detection of color information is made prior to printing process, and the data is output with the print color mounted on the printer by temporarily reflecting the printer drive settings.

Check box not selected : Color information is updated only when you click [Refresh] of the [Guide] tab.

Reference



You need to make an entry for this field when detection is made for the color (colour) information of the cylinder (drum) mounted on the printer.

IP Address

Enter the IP address of your RISO printer which is connected.

5

Click [OK].

The new Printer Driver configuration is confirmed and the [Properties] dialog box is closed.

■ Sending and Printing Data

Follow the procedures given below to print out document data directly on your RISO printer.

If the corresponding RISO Printer Driver has not been installed in your computer yet, install it first, referring to the section “Installing the Printer Driver” on [page 8](#).

IMPORTANT!

- The maximum print area is different depending on the model of RISO printer. If you want to know the maximum print area of your document, consult the user's guide of your RISO printer.
- For other limitations, also read the user's guide of your RISO printer.

1

Turn on your RISO printer and load paper.

Load the proper paper to be printed.

2

Specify the print job in the [Print] dialog box.

Turn on your computer and start Windows.

Open the document file to be printed, select [Print] in the [File] menu to open the [Print] dialog box.

3

Select a Printer Driver.

Select a Printer Driver that supports your printer from the [Printer Name] list.

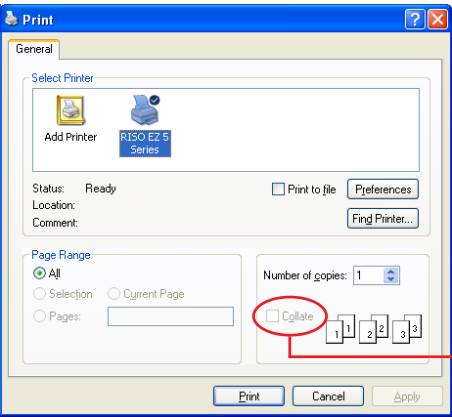
To print from a USB Flash Drive, select [Printer Name (USB flash)] and connect the USB Flash Drive to your computer. (Only for EZ5 series)

4

Check print conditions.

- NOTE**
- Specify the number of copies to be printed within the following range : 1 to 9,999.
 - Never fail to deselect the [Collate] box. If it is selected, the master-making operation will be repeated for every copy.

The displayed items in the [Print] dialog box vary depending on the application software.



Remove the check mark for [Collate].

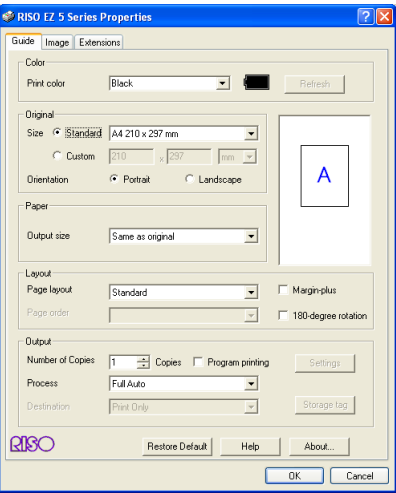
IMPORTANT!

If you want to print a file consisting of several pages, and the file include different paper sizes or page directions, printing may fail when you choose [All] for the paper range. Specify page numbers to print for those of same page size or direction.

If you want to set additional print conditions for the current print job ; Open the [Properties] dialog box by clicking [Properties] in the [Print] dialog box.

- NOTE** Some printer settings are not available depending on access privileges.

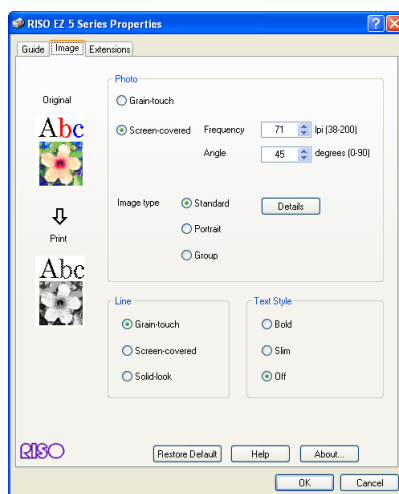
[Guide] Tab (refer to [page 55](#) for detailed settings)



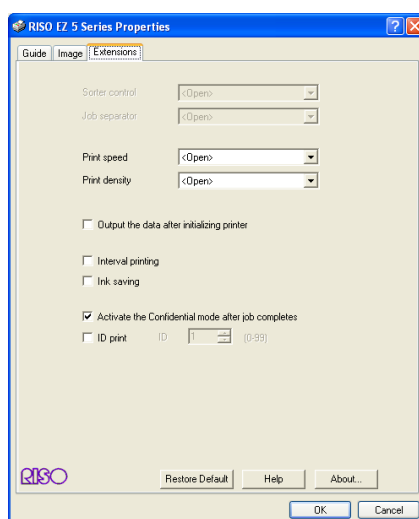
IMPORTANT!

Settings of paper size and page direction for this tab should be identical with those in the application software to be used.

[Image] Tab (refer to [page 63](#) for detailed settings)



[Extensions] Tab (refer to [page 66](#) for detailed settings)



If no settings are required, leave this tab as “<Open>” or make no changes.

(Printing will be done according to the setting of your RISO printer.)

If you want to customize settings, be sure to refer to the user’s guide of your RISO printer for the relevant section.

5

Start printing.

Click [OK] in the [Print] dialog box.

The selected document file data is then transmitted to your RISO printer and printed out there as specified in the previous step.

When using a USB Flash Drive, data is output to the USB Flash Drive. Disconnect the USB Flash Drive from the computer, connect it to the printer and print the data. For printing procedures, see the printer user’s guide.

■ Setting the Print Conditions

You can set various print conditions over the tabs in the [Properties] dialog box.

To open this dialog box, click [Properties] in the [Print] dialog box.

IMPORTANT!

Some Printer Driver settings are disabled by the settings.

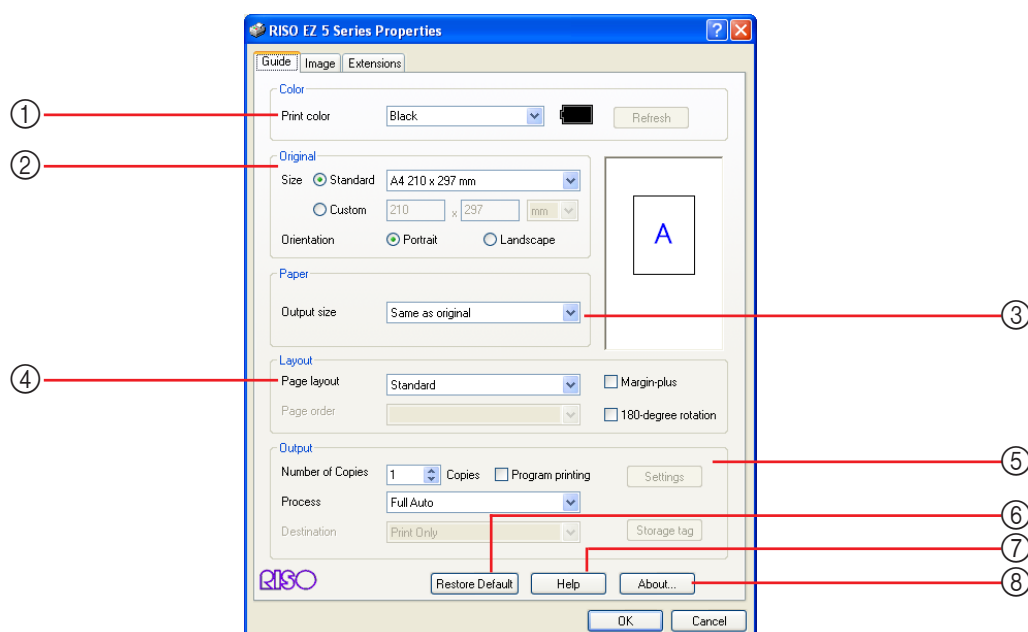
		Printer Driver		USB flash-via-Printer Driver	
Printer Driver Settings		Print Only	Storage Only	USB print (Manual)	USB print (Auto process)
[Guide] Tab	180-degree rotation	Enable	Disable	Disable	Enable
	Program printing	Enable	Disable	Disable	Enable
	Process	Enable	Disable	Disable	Enable
[Extensions] Tab	Sorter control	Enable	Disable	Disable	Enable
	Job separator	Enable	Disable	Disable	Enable
	Print speed	Enable	Disable	Disable	Enable
	Print density	Enable	Disable	Disable	Enable
	Output the data after initializing printer	Enable	Disable	Disable	Enable
	Interval printing	Enable	Disable	Disable	Enable
	Ink saving	Enable	Enable	Enable	Enable
	Activate the Confidential mode after job completes	Enable	Disable	Disable	Enable
	ID print	Enable	Enable	Enable	Disable

Enable : Printer Driver's setting is active.

Disable : Printer Driver's setting is disabled (or cannot be set.) Set with printer's control panel when printing.

Only EZ5 series has a feature of printing with USB Flash Drive.

[Guide] Tab



Settings

① Color

Print color
Refresh

② Original

Size
Orientation

③ Paper

Output size

④ Layout

Page layout
Page order
Margin-plus
180-degree rotation

⑤ Output

Number of Copies
Program printing
Process
Destination
Storage tag

⑥ Restore Default

⑦ Help

⑧ About...

① Color

This option is not available for KZ.

Print color

When color information is acquired by executing [Refresh], the color that has been set in the printer is automatically set, and the character of the color name is displayed in blue. This operation is convenient for checking what colored drum is currently set.

When the information has not been acquired, display the drop-down list by clicking [▼], and manually select the color that has been set for the printer.

[Refresh] (Only in the case of network connection)

■ It is necessary to set [Color information] - [Reference] on the [Configuration] tab ([Page 46](#)).

When [Refresh] is clicked, the color information that has been set to the printer is reflected on the Printer Driver. When the information is acquired, the character of the color name of the Printer Driver is displayed in blue.

IMPORTANT!

To appropriately update the ink color, the RISO Network Card monitoring tool needs to be started in advance.

② Original

Size

You can specify a desired paper size in either “Standard” or “Custom” box as a frequently-used one. The factory-set paper size is “Standard: Letter 8.5 × 11 inch” or “A4 210 × 297mm”.

– Changing the standard paper size setting

When using any other standard size of paper than the displayed one, click [▼] to display a list of paper sizes and select a desired one by highlighting it.

IMPORTANT!

When paper is fed with the long edge first, select the paper size whose name contains the word “-R”.

Be sure to specify the same page direction which was set in the application software used when creating the document data.

– Changing the custom paper size setting

When using any other custom-size paper than the displayed one, select [custom] and enter its width and length in the boxes. If desired to change the unit of length from “inch” to “mm”, click [▼] next to the same box and highlight [mm].

NOTE • The range of paper size you can specify here depends on the specifications of your RISO printer.

- You can name custom-size paper and register it in the list of standard paper sizes. See “Registering Custom Paper Size as Standard” on [page 47](#) for the registration procedure.
- In some application software, inputs in [Custom] column might be ignored. In such a case, register the non-standard size paper. (See [page 47](#))

③ Paper

Orientation

You are required to select the same page direction as of original document data here. The factory-set page direction is "Portrait".

When paper is fed with the wide edge first, however, the page direction specified here should be opposite to that of original document data, i.e. "Portrait" to "Landscape" and "Landscape" to "Portrait".

IMPORTANT!

Be sure to specify the same page direction which was set in the application software used when creating the document data.

④ Layout

Output size

Select the paper size for printing.

If you do not use scaling, select [Same as original].

If you select paper size different from the original text, scaling will be done from 50% to 200%.

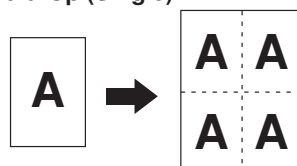
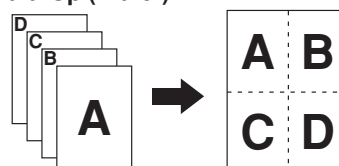
Page layout

You can print the data of two or more pages on one sheet of paper.

Standard : No Multi-up (single) or (plural) printing is conducted.

Multi-up (Single) : Print two or four copies of a single document on one sheet of paper.

Multi-up (Plural) : Print two or four different text pages on one sheet of paper.

Multi-Up (Single)**Multi-Up (Plural)****Page order**

Set the order of the original. You can select when conducting multi-up printing.

2 in 1: Select from Ascending/Descending.

4 in 1: Select from Horizontal-Ascending/Vertical-Ascending/Horizontal-Descending/Vertical-Descending.

⑤ Output

Margin-plus

If you select this check box, printing will be done in a 95% scaling.

180-degree rotation

You can rotate print images by 180 degrees by activating this option. Select the check box to activate it.

IMPORTANT!

This option is also available on the control panel of your RISO printer. Make sure it is not activated on both sides at the same time. If it is, this option will be canceled.

Number of Copies

You can use this field to specify the number of copies if no field is prepared for print quantity entry in your application software. When the number of copies can be specified in the [Print] dialog box of the application software, on the other hand, you can ignore this setting because it has no effect on printing operation.

Program printing

This option is not available for EZ3/EZ2/KZ series.

Printing jobs are conducted in sets of copies. One set should contain at least one page. By selecting program printing, you can click [Settings]. Click [Setting] to open [Program printing] dialog box.

Group	Copies	Sets
1	<input type="text"/> Cps. x	<input type="text"/> Sets
2	<input type="text"/> Cps. x	<input type="text"/> Sets
3	<input type="text"/> Cps. x	<input type="text"/> Sets
4	<input type="text"/> Cps. x	<input type="text"/> Sets
5	<input type="text"/> Cps. x	<input type="text"/> Sets
6	<input type="text"/> Cps. x	<input type="text"/> Sets

Reset

Job separation

☐ Tape ☒ Off

OK Cancel

Copies : Enter the value for number of pages per set to be printed.

Sets : Enter the value for number of sets to be printed.

Reset : Returns Copies and Sets to their defaults.

Job Separation : When the Tape is selected, the tape is inserted into each group. (Optional job separator should be mounted on your RISO printer.)

Process

You can specify how to process your print jobs on your RISO printer, i.e. to complete them without interruption or to interrupt them after a specified process step. By interrupting your print jobs, you can check print position and quality with test prints before printing process or change the print job flow according to your print requirements. Click on the [▼] bar and select a desired process flow from the displayed list. The available process flows are as follows :

Full Auto:

To complete print jobs without operator involvement on your RISO printer. No pause is made between master-making and printing processes until the end of print jobs.

Semi-Auto (Print):

To interrupt print jobs before each master-making process, thus allowing you to handle a stack of printed copies, especially for duplex printing. You can view the page image on the LCD of the printer to check what you are about to print.

Semi-Auto (Master):

To interrupt print jobs before each printing process, thus allowing you to check a sample print.

Manual:

To interrupt print jobs before each process step, i.e. both master-making and printing processes.

IMPORTANT!

- For the Printer Driver, [Process] is available only when you select [Print Only]. (See [Page 60](#)) (The setting is not valid for [Storage Only].) For stored data, set the [Process] mode from the printer display when the data is activated.
- For the USB flash-via-Printer Driver, master-making/printing is executed according to the [Process] setting made here when [Destination] ([Page 60](#)) is set to [USB print (Auto process)]. For that reason, when [Semi-Auto (Print)] or [Manual] is selected, master-making does not start automatically.

Destination

(For the Printer Driver)

■ The [Destination] is displayed only when your RISO printer is equipped with the storage memory (DM-128CF).

NOTE When you install the Printer Driver, open the [Properties] dialog box, and you can select the storage memory to be installed or not installed from the [Configuration] tab. (See [page 46](#))

Click [▼] to view the drop-down list and select the destination.

Print Only

Send the data to your RISO printer, and start printing in the auto process. Stored data will be automatically erased after the print job is done.

Print & Storage*

The print job is processed and the data is stored in the printer. You can reactivate the stored data on your RISO printer at anytime you like.

Storage Only*

Send the data to your RISO printer to be stored. You can reactivate the stored data on your RISO printer at anytime you like.

* This option is not available for EZ3/EZ2/KZ series.

(For the USB flash-via-Printer Driver)

Only for EZ5 series

Click [▼] to open the drop-down list, and set the destination.

USB print (Manual)

Data is output to the USB Flash Drive. A folder for storing the data in the USB Flash Drive data can be selected. ([Page 61](#))

USB print(Auto process)

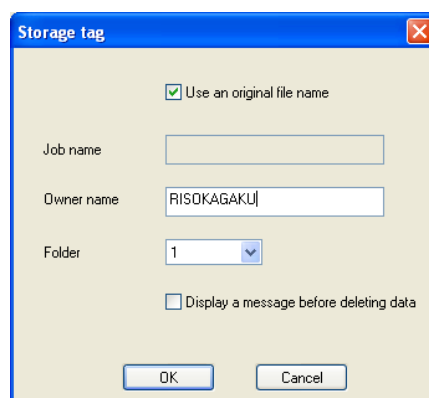
Data is sent to the USB Flash Drive. It is printed according to the [Process] setting. (A folder for storing the data in the USB Flash Drive cannot be selected. Data is stored in the [Auto process] folder.)

After a master-making, the data in the USB Flash Drive is automatically deleted.

Storage tag (For the Printer Driver)

Set additional information necessary for storing data. The information below will be stored together with the document data. Such information can be used to identify stored data.

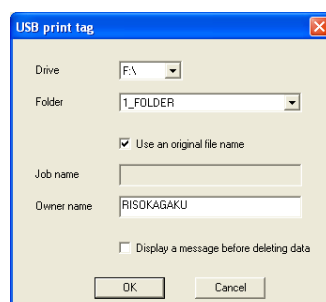
Selecting [Print & Storage] or [Storage Only] for [Destination] enables you to click [Storage Tag]. Click [Storage Tag] to open the [Storage Tag] dialog box.



(For the USB flash-via-Printer Driver)

Only for EZ5 series

Set any additional information needed to output to the USB Flash Drive. The items set below are saved with the original data. This information is used to identify the data to output. Clicking [Storage tag] opens the [USB print tag] dialog.



Use an original file name:

Select the check box to automatically use an original file name for identification on the application software on which the document was created.

Job name:

Enter Job name if you want to have any name different from one specified on the application software on which the document was created.

Owner name:

Input the name of the administrator of the data to be stored or output to the USB Flash Drive. The default is the name of the user logged into the computer.

⑥ Restore Default**Folder:**

Select a folder (1-6) to use for storing or printing from the USB Flash Drive.

Drive (Only for USB flash-via-Printer Driver):

Select the drive that the USB Flash Drive is connected to. The drive detected as the USB Flash Drive appears in the drop-down list.

Display a message before deleting data:

Select the check box to display a confirmation message on the control panel of your RISO printer before deleting stored data.

IMPORTANT!

You are not allowed to use the prohibited characters as follows for [Job name] and [Owner name].

Prohibited characters : \ / : , ; * ? " ' < > |

NOTE With the Printer Driver for USB Flash Drive, when [USB print (Auto process)] is selected for [Destination](Page 60), the data is automatically deleted after printing is finished.

⑦ Help

Returns the settings on this tab to the default settings.

NOTE This is also displayed on the [Image] and [Extensions] tabs.

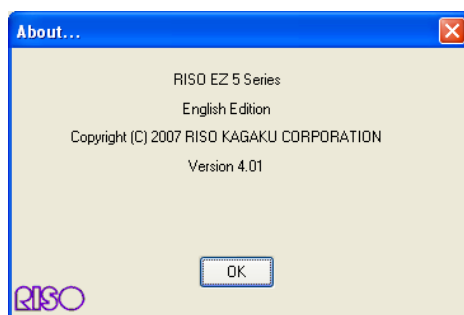
This option is not available for KZ.

Displays help information.

NOTE This is also displayed on the [Image] and [Extensions] tabs.

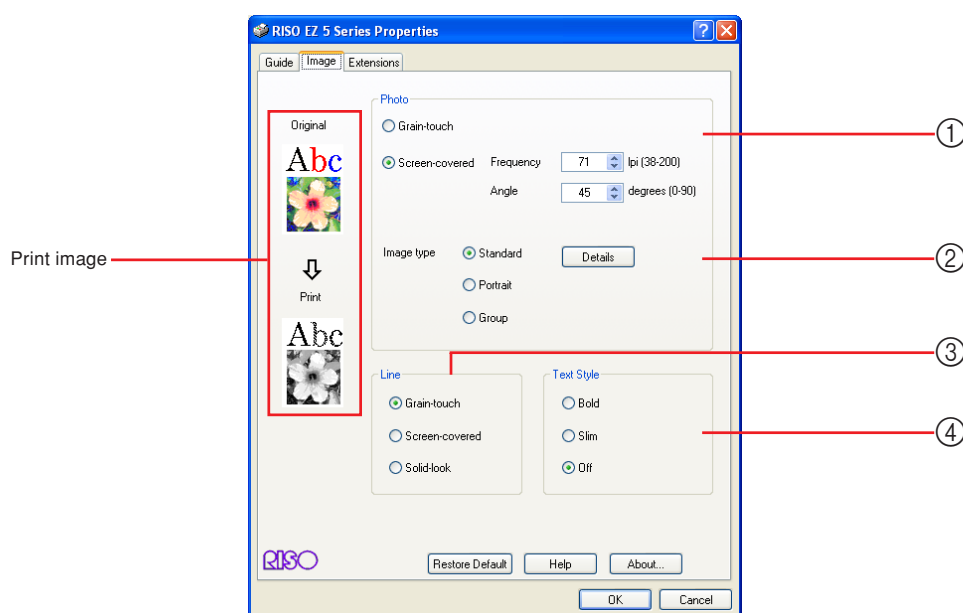
⑧ [About...] button

Opens the [About...] dialog box, in which the version number of the Printer Driver can be checked. In case you contact your service representative due to function errors, check this version number beforehand.



NOTE This is also displayed on the [Image] and [Extensions] tabs.

[Image] Tab



Settings

① Photo

Grain-touch
Screen-covered
Frequency
Angle

② Image type

Standard
Portrait
Group

③ Line

Grain-touch
Screen-covered
Solid-look

④ Text Style

Bold
Slim
Off

① Photo

You can select either of the following two styles in printing out photo images in your document data. The print result of the selected style of photo images is previewed on the screen.

Grain-touch:

Various tones of photo images are reproduced by changing the number of dots in an area according to original density. The printed-out photo images will have grain-touch appearance.

Screen-covered:

Various tones of photo images are reproduced by changing the size of dots according to original density. The printed-out photo images will be covered with a dot screen.

Though the wide range of tone levels in original photo images can be kept in this style, their fineness will be lowered.

When you select [Screen-covered], you can set the screen-covered parameter.

② Image type

Frequency

You can select the frequency of dots per inch (25.4 mm). You can select the value from 38 to 200. The default value is 71.

Angle

You can select the angle of dot direction so as to make adjustments against moire or other problems. You can select the value from 0 to 90. The default value is 45.

Select the type of photo and set image finishing.

Standard

Clicking [Details] enables settings to be made for brightness and contrast.

Portrait

Use this setting for pictures of one or two individuals from the bust up. This type of image processing is particularly good for printing photos of faces.

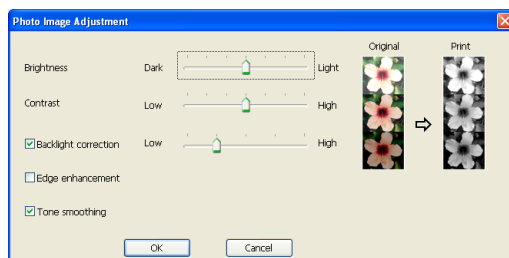
Group

This setting is for group photos that are over-exposed. This process is effective for restoring facial features that have become washed out by a flash.

NOTE When either [Portrait] or [Group] is selected, the settings made for [Standard] are returned to their defaults.

Photo Image Adjustment

Clicking [Details] opens the [Photo Image Adjustment] dialog box.



Brightness : The brightness of photo images can be adjusted to 7 levels.

Contrast : The contrast of the overall image can be adjusted to 7 levels.

Backlight correction : When a check mark is placed in the check box, backlight correction is applied to the image to make it sharper.

Edge enhancement : When a check mark is placed in the check box, edge enhancement is applied to the image to accent contours.

Tone smoothing : This setting is available when [Screen-covered] is selected for [Photo]. When a check mark is placed in the check box, the tonal expressions used in screen-covered processing are smooth.

③ Line

Specifies the expression method of the line (text).

Grain-touch : This mode displays the color gradation. The bright color is printed out in light tone and the dark color is printed out in deep tone.

Screen-covered : The text sections are displayed with halftone dots. This mode is unsuitable for small sized text.

Solid-look : This mode makes all text solid-look. You can use this mode to express the text clearly. The difference of each text color cannot be expressed.

④ Text Style

You can adjust the thickness of text in this mode.

Bold : makes the text thicker and print out (to prevent patchiness)

Slim : makes the text slimmer and print out (to prevent crushed lines)

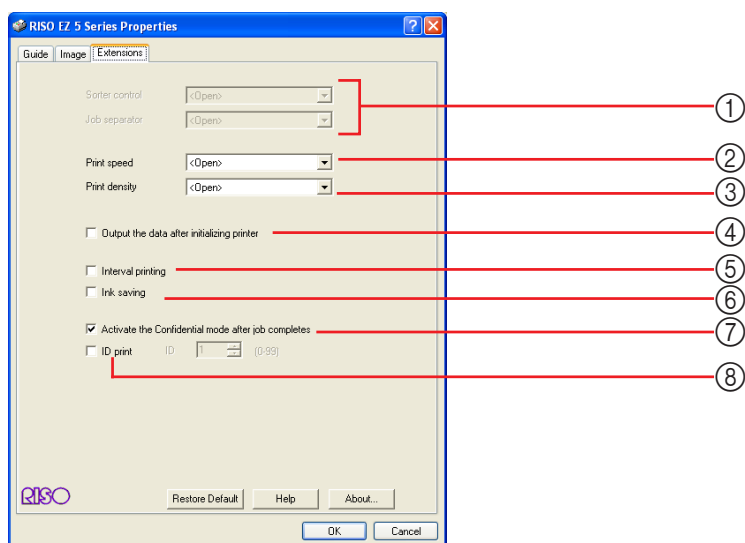
Off : doesn't adjust the text volume

NOTE Print image:

According to the settings of each [Image type], [Line] and [Text Style], the image of the documentation data and print will be displayed.

The actual documentation data and prints are different from the displayed images.

[Extensions] Tab



Settings

① Device

Sorter control
Job separator

② Print speed

③ Print density

④ Output the data after initializing printer

⑤ Interval printing

⑥ Ink saving

⑦ Activate the Confidential mode after job completes

⑧ ID print

① Device

NOTE • [Sorter Control] appears when [Sort] is selected for [Sorter] on the [Configuration] tab (Page 47).

• [Job Separator] is displayed when you select the check box of [Job Separator] in the optional device concerned (See page 47).

Sorter control

The sort mode can be set for the sorter connected to the printer.

<Open> : Follow the present setting of your RISO printer.

NonSort : Prints are directly sorted in the nonsort tray of the sorter.

Sort : Prints from multiple originals are sorted. Prints are sorted and distributed one full set per bin.

Group : Prints are sorted in different bins by original.

Stack : Prints are distributed one copy per bin, and this process is repeated.

NOTE For sorter features and operation, see the sorter user's guide.

Job separator

You can activate the job separator on your RISO printer and select the timing of separation tape insertion.

<Open> : Follow the present setting of your RISO printer.

OFF : No separation tape inserted.

ON-Between Documents : Insert separation tapes per job.

ON-Between Pages : Insert separation tapes per page.

NOTE For the features and operations of the Job Separator, refer to the User's Guide of the Job Separator.

② Print speed

You can select the print speed of your RISO printer. Click on the [▼] bar and select a desired speed level from the displayed list. 5 levels of print speed are available. The factory-set speed level is "<Open>", which lets your RISO printer operate at the speed level as specified on its own control panel. With KZ, the print speed is selected from 2 levels.

③ Print density

This option is not available for EZ3/EZ2/KZ series.

You can select the print density on your RISO printer. Click on the [▼] bar and select a desired density level from the displayed list. The factory-set density level is "<Open>", which lets your RISO printer print at the density level as specified on its own control panel.

④ Output the data after initializing printer

Your RISO printer is initialized before receiving print data when this check box is selected. It is recommended to select this check box in most cases.

⑤ Interval printing

This option is not available for EZ3/EZ2/KZ series.

By allowing the printer to skip a paper feeding during printing, the ink has time to dry, preventing it from leaving marks on the back of the next sheet.

⑥ Ink saving

This option is not available for KZ.

The ink saving function of the printer is activated when this check box is selected. The volume of ink used for printing will be reduced compared with normal operation.

NOTE In case of selecting "Ink saving mode" printing image might be lighter or erased depending on darkness of the original image.

⑦ Activate the Confidential mode after job completes

You can prevent your confidential documents from being duplicated without your knowledge by selecting this check box. When this check box is selected, the remaining master is automatically replaced with a blank one after all specified print jobs are finished.

⑧ ID print

This feature is available for EZ5 series only.

The data will be output as "ID print" when this check box is selected. For ID print, the input of PIN code is required when printing the data from the printer. Use this setting to print documents you do not want others to read, such as confidential documents.

Though the job is sent to the printer, the master or prints are not made until authorization is input from the printer's control panel.

IMPORTANT!

- With the Printer Driver for USB Flash Drive, placing a check mark in the [USB print] check box automatically sets [USB print (Manual)] for [Destination]([Page 60](#)). [USB print (Auto process)] cannot be selected.
- Before setting [ID print], make the authorization settings in the printer. For details, see the printer user's guide.

ID

Input your ID Number registered with the printer.

NOTE IDs are allocated to each individual user in the range from 0 to 99. For details, ask the administrator of the printer.

■ Creating a RISORINC-format file

It is necessary to create a RISORINC-format file before sending data via FTP with RISO Network Card.

NOTE A RISORINC-format file can only be used with RISO printers. All settings made in the Printer Driver are saved with the file.

IMPORTANT!

The procedure for creating RISORINC files differs when using the [Layout] feature (Page 57). See "Creating RISORINC Files Using the Layout function" (Page 71).

1

Open a document file and specify the print job in the [Print] dialog box.

Select [Print] in the [File] menu to open the [Print] dialog box.

2

Confirm that [RISO...] is selected in the [Printer] field in the [Print] dialog box.

The selected [RISO...] should correspond to the RISO printer model to which your document file is to be transmitted. Otherwise, the transmitted document data may not be printed out correctly on the target RISO printer.

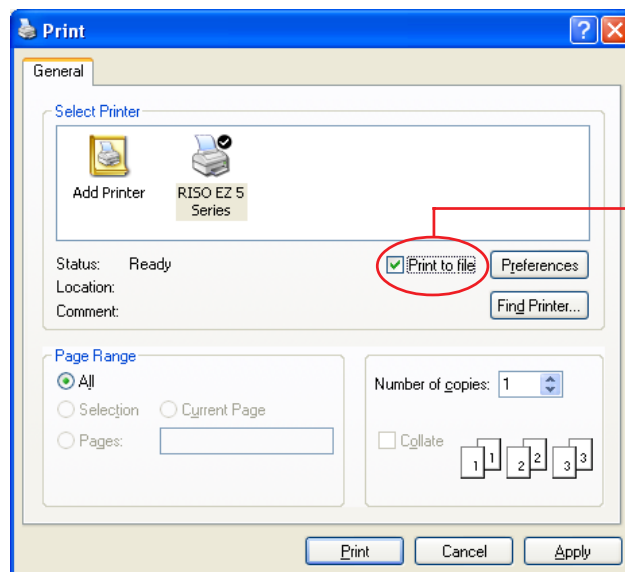
IMPORTANT!

- The RISORINC-type file should be created with the RISO Printer Driver corresponding to your RISO printer. If the Printer Driver does not correspond to your RISO Printer Driver, the transmitted document may not be printed out correctly.
- USB flash-via-Printer Driver cannot be used.

3**Output the document data to a file.**

Select the corresponding check box, ex. [Print to file], and click [OK]. Then specify the name and the destination for the RISORINC-format file to be created in the displayed dialog box and click [OK] or [Save].

NOTE If the corresponding check box does not exist in the [Print] dialog box, change the Printer Driver configuration. Open the [Properties] dialog box from the [Printers] folder and select “File” in the [Print to the following port] list in the [Details] or [Ports] tab. Then open the [Print] dialog box and click [OK].



Mark the check box of the
[Print to file]

Creating RISORINC Files Using the Layout Feature

When using the [Layout] function ([Page 57](#)), files cannot be properly created in the usual way. Create RISORINC files from a Local Port.

■ Adding a Local Port for RISORINC Files

- ① **Open the Properties dialog box.**
See Steps **1** and **2** on [page 46](#).
- ② **Open the [Ports] tab.**
- ③ **Click [Add Port].**
- ④ **Select [Local Port] and click [New Port].**
- ⑤ **The [Name Port] dialog box opens, therefore input the drive and folder name where to store the RISORINC file (i.e., C:\RISO) and the file name (i.e., RISORINC.prn), and click [OK].**
If "C:\RISO\RISORINC.prn" is input for [Port Name], the file named "RISORINC.prn" is saved in the "RISO" folder of the C drive.

■ Selecting a Local Port for RISORINC Files

- ① **Open the Properties dialog box.**
See Steps **1** and **2** on [page 46](#).
- ② **Open the [Ports] tab.**
- ③ **Place a check mark in the check box of the Local Port for RISORINC files that was added under [Print Port], and [OK].**

IMPORTANT!

After creating the RISORINC file using the [Layout] feature, restore the usual print port in the same way you set the Local Port.

NOTE It is convenient to install two RISO Printer Drivers and register one for printer output and the other for RISORINC Files.

■ Outputting RISORINC Files

- ① **Open the [Print] dialog box.**
Open the original data to convert to RISORINC format, and select [Print] from the [File] menu.
- ② **Check print conditions.**
Check that the RISO Printer Driver in which the Local Port has been selected for RISORINC files appears in the [Printer Name] list.
- ③ **Output to file.**
Remove the check mark from the [Print to file] check box and click [OK]. The file is saved under the name and folder set for the Local Port.

IMPORTANT!

- Remove the check mark from the [Print to file] check box. Data is automatically output to a file.
- To output other original data, either move or rename the currently saved RISORINC file.
If output as is, the saved file is overwritten.

Uninstalling the Printer Driver

The procedure of uninstalling the Printer Driver by using the uninstaller is described here.

For Windows Vista/Windows 7/Windows 8/Windows 8.1/Windows 10

In the case of uninstallation using the uninstaller, the driver package cannot be deleted. When the driver package needs to be deleted, in such cases as for re-installation of the Printer Driver, uninstall the Printer Driver manually.

■ Uninstall the Printer Driver 73

■ Uninstall the Printer Driver

The procedure of uninstalling the Printer Driver is described here.
(Regarding the procedure of manual uninstallation, see [Page 80](#).)

IMPORTANT!

To uninstall the Printer Driver, it is necessary to log on to Windows by the account with the authority to change the system setting (administrator, etc.).

1

Insert the [RISO Printer Driver] CD-ROM into your computer's CD-ROM drive.

The installer is started. If the installer does not start up, double-click on the [Setup(.exe)] file in the folder below.

For Windows (32-bit):

(CD-ROM):[Windows 32-bit] folder

For Windows (64-bit):

(CD-ROM):[Windows 64-bit] folder

NOTE If the [User Account Control] dialog appears, click [Yes] or [Allow] (for Windows Vista).

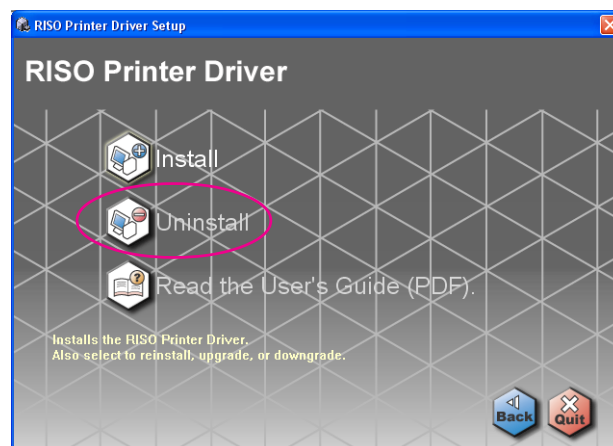
2

Select your language from the drop-down list, then click [OK].



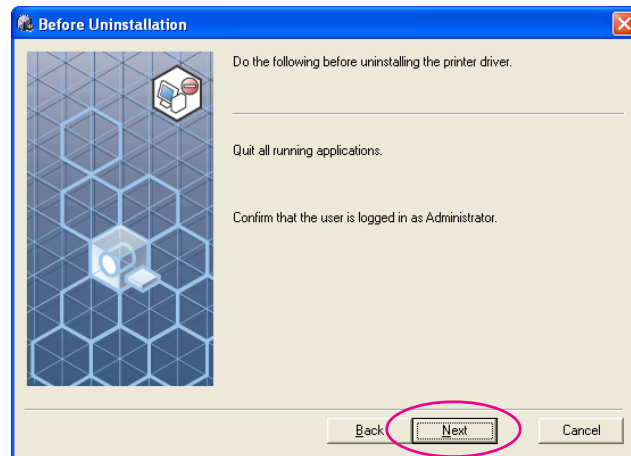
3

Click [Uninstall].



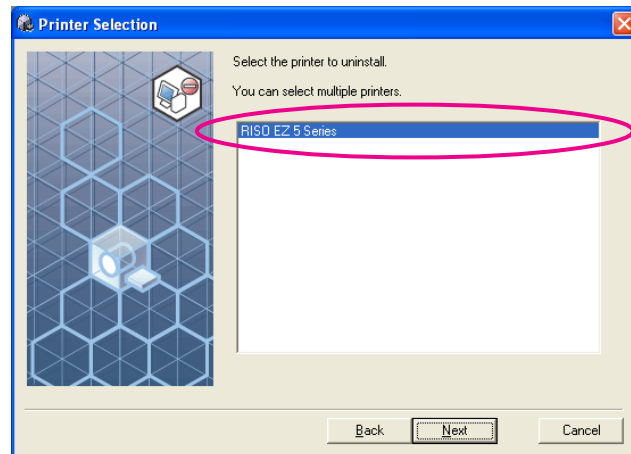
4

Click [Next].



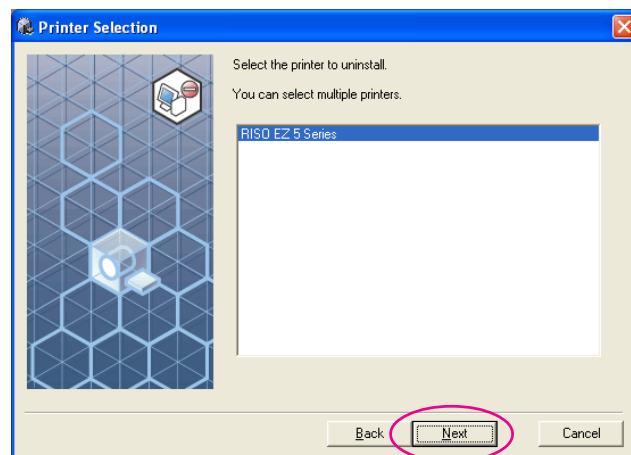
5

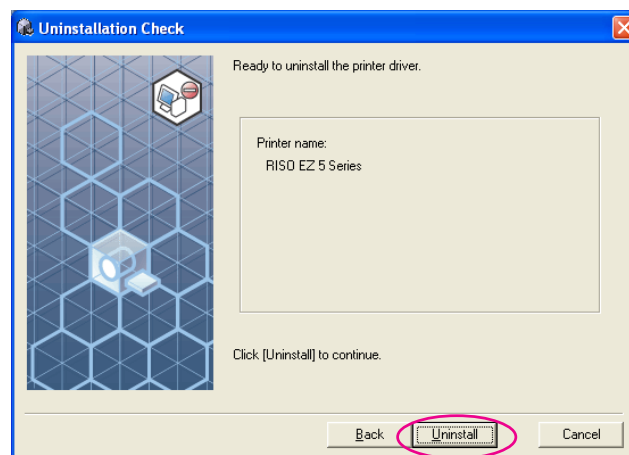
Select the printer for which the Printer Driver needs to be uninstalled.



6

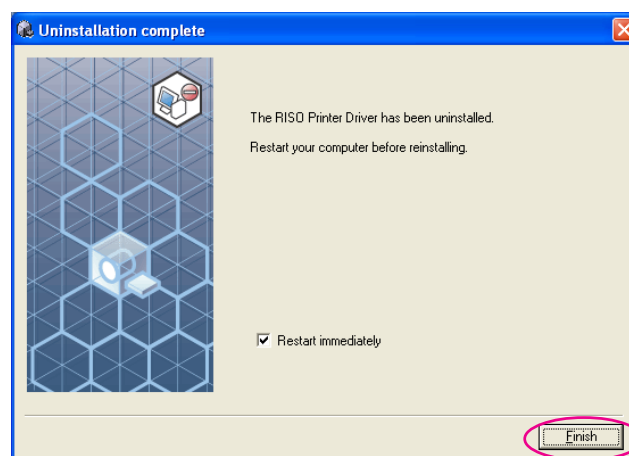
Click [Next].



7**Click [Uninstall].****8****Click [Finish].**

When the Printer Driver has been uninstalled, be sure to restart your computer.

When [Restart immediately] is checked, your computer is restarted after [Finish] is clicked.

**9****Remove the [RISO Printer Driver] CD-ROM from your computer.****IMPORTANT!**

Keep the removed CD-ROM at hand.

Manually installing / uninstalling the Printer Driver

The procedure of installing / uninstalling the Printer Driver without using the installer / uninstaller is described here.

For Windows 2000/Windows XP

■ Manual installation 78

In the case of connection via USB cable ... 78

In the case of network connection /

USB Flash Drive output 79

■ Manual uninstallation 80

For Windows Vista

■ Manual installation 81

In the case of USB cable connection 81

In the case of network connection /

USB Flash Drive output 82

■ Manual uninstallation 84

For Windows 7

■ Manual installation 85

In the case of USB cable connection 85

In the case of network connection /

USB Flash Drive output 86

■ Manual uninstallation 88

For Windows 8/Windows 8.1

■ Manual installation 89

In the case of USB cable connection 89

In the case of network connection /

USB Flash Drive output 90

■ Manual uninstallation 92

For Windows 10

■ Manual installation 93

In the case of USB cable connection 93

In the case of network connection /

USB Flash Drive output 94

■ Manual uninstallation 96

For Windows 2000 / Windows XP

■ Manual installation

IMPORTANT!

- To install the Printer Driver, it is necessary to log on to Windows by the account with the authority to change the system setting (administrator, etc.).
- Server OS and printer sharing are not supported.

In the case of connection via USB cable

- 1** Turn the power of the printer on, and connect the USB cable to the printer.
- 2** Start your computer, and insert the [RISO Printer Driver] CD-ROM into your computer.
- 3** Connect the USB cable to your computer.
- 4** Install the Printer Driver according to the instructions on the [Found New Hardware Wizard] window.
 - ① Select [Install from a list or specified location], and [Don't search. I will choose the driver to install.], and then click [Next]. (For Windows XP)
Select the [Display a list of known drivers for this device so that I can choose a specific driver], and then click [Next]. (For Windows 2000)
 - ② Click [Have Disk], and select the inf file of the driver to install.
(CD-ROM): [Windows 32-bit]-[RISO Printer Driver]-[Win2000_XP]-[English]-RISODRV.INF
 - ③ Select the printer in use, and click [Next].
 - ④ Complete the Wizard window.
- 5** Restart your computer.
- 6** Open the printer folder, and open the properties of the printer to which the Printer Driver has been installed.

- 7** Click [Print processor] of the [Details] tab.
- 8** Select [R34X8AP] from the list of print processors and [NT EMF 1.008] from the list of default data types, and click [OK].
- 9** Print the test page.

In the case of network connection^{*1} / USB Flash Drive output^{*2}

^{*1} This option is not available for KZ.

^{*2} Only for EZ5 series.

- 1** Start [Add Printer Wizard]
- 2** Select [Local printer] and click [Next].
- 3** Create the port.
 In the case of network connection:
 Create TCP/IP port or LPR port.
 In the case of USB Flash Drive output:
 Create the local port (C:\RISO\RISORINC.prn, etc.).
- 4** Click [Have Disk], and select the inf file of the driver to install.
 In the case of network connection:
 (CD-ROM): [Windows 32-bit]-[RISO Printer Driver]-[Win2000_XP]-[English]-RISODRV.INF
 In the case of USB Flash Drive output:
 (CD-ROM): [Windows 32-bit]-[RISO Printer Driver]-[Win2000_XP]-[English]-[USB flash]-RISODRV.INF
- 5** Select the printer in use and click [Next].
- 6** In the case of network connection, print the test page.
- 7** Restart your computer.

■ Manual uninstallation

- 1** Delete the printer to uninstall from the printer folder.
- 2** From the menu of the printer folder, open [File] and then [Server properties].
- 3** From the [Driver] tab, select the Printer Driver to uninstall, and click [Delete].

For Windows Vista

■ Manual installation

IMPORTANT!

- To install the Printer Driver, it is necessary to log on to Windows by the account with the authority to change the system setting (administrator etc.).
- Printer sharing is not supported.

In the case of USB cable connection

- 1** Turn the power of the printer on, and connect the USB cable to the printer.
- 2** Start your computer.
- 3** Connect the USB cable to your computer.
- 4** In the [Found New Hardware] window, select [Locate and install driver software] and then [Don't search online].
- 5** Select [I don't have the disk. Show me other options.], and then [Browse my computer for driver software].
- 6** Insert the [RISO Printer Driver] CD-ROM into your computer.
- 7** In the [Browse] window, select the inf file of the driver to install.
For Windows Vista (32-bit): (CD-ROM): [Windows 32-bit]-[RISO Printer Driver]-[WinVista_7]-[English]-RISODRV.inf
For Windows Vista (64-bit): (CD-ROM): [Windows 64-bit]-[RISO Printer Driver]-[WinVista_7]-[English]-RISODRV.inf
- 8** Select the printer in use and click [Next].
- 9** Restart your computer.
- 10** Open the printer folder, and open the properties of the printer to which the Printer Driver has been installed.

- 11** Click [Print processor] of the [Details] tab.
- 12** Select the following print processor from the list and click it.
For Windows Vista(32-bit): [R34V8AP]
For Windows Vista(64-bit): [R34V6AP]
- 13** Select [NT EMF 1.008] from the list of default data types, and click [OK].
- 14** Print the test page.

In the case of network connection*1 / USB Flash Drive output*2

*1 This option is not available for KZ.

*2 Only for EZ5 series.

- 1** Start [Add Printer Wizard].
- 2** Select [Local printer], and click [Next].
- 3** Create the port.
In the case of network connection:
Create TCP/IP port or LPR port.
In the case of USB Flash Drive output:
Create the local port (C:\RISO\RISORINC.prn, etc.).
IMPORTANT!
You cannot create the local port in the route of the startup drive.
Create any folder, and then create the local port in the folder.
- 4** Click [Have Disk], and select the inf file of the driver to install.
In the case of network connection:
For Windows Vista (32-bit): (CD-ROM): [Windows 32-bit]-[RISO Printer Driver]-[WinVista_7]-[English]-RISODRV.inf
For Windows Vista (64-bit): (CD-ROM): [Windows 64-bit]-[RISO Printer Driver]-[WinVista_7]-[English]-RISODRV.inf

In the case of USB Flash Drive output:

For Windows Vista (32-bit): (CD-ROM): [Windows 32-bit]-[RISO Printer Driver]-[WinVista_7]-[English]-[USB flash]-RISODRV.inf

For Windows Vista (64-bit): (CD-ROM): [Windows 64-bit]-[RISO Printer Driver]-[WinVista_7]-[English]-[USB flash]-RISODRV.inf

5

Select the printer in use, and click [Next].

6

In the case of network connection, print the test page.

7

Restart your computer.

■ Manual uninstallation

- 1** Delete the printer to uninstall from the printer folder.
- 2** From the menu that will be displayed by right-clicking on the margin of the printer folder, select [Run as administrator] and then [Server properties].
- 3** From the [Driver] tab, select the Printer Driver to uninstall, and click [Delete].
- 4** When the [Delete driver and package] dialog opens, select [Delete driver and driver package] to delete the driver and driver package.

For Windows 7

■ Manual installation

IMPORTANT!

- To install the Printer Driver, it is necessary to log on to Windows by the account with the authority to change the system setting (administrator etc.).
- Printer sharing is not supported.

In the case of USB cable connection

- 1** Turn the power of the printer on, and connect the USB cable to the printer.
- 2** Start your computer.
- 3** Connect the USB cable to your computer.
IMPORTANT!
Do not proceed to the following steps until [Device driver software was not successfully installed] appears in the task tray.
- 4** **Activate [Device Manager].**
Click [Start] icon-[Control Panel]-[Hardware and Sound]-[Device Manager].
- 5** **Right-click [Other devices]-[(Your printer name)] and then click [Update Driver Software] from the menu that appears.**
- 6** **Click [Browse my computer for driver software].**
- 7** **Insert the [RISO Printer Driver] CD-ROM into your computer.**
- 8** **Click [Browse], select the folder shown below and click [OK].**
For Windows 7 (32-bit): (CD-ROM): [Windows 32-bit]-[RISO Printer Driver]-[WinVista_7]-[English]
For Windows 7 (64-bit): (CD-ROM): [Windows 64-bit]-[RISO Printer Driver]-[WinVista_7]-[English]
- 9** **Select [(Your printer name)] from the list and click [Next].**

- 10** Click [Close] and restart your computer.
- 11** Open [Control Panel]-[Hardware and Sound]-[Devices and Printers] in this order, right-click on the installed printer and click [Printer properties] from the menu that appears.
- 12** Click [Print processor] of the [Advanced] tab.
- 13** Select the following print processor from the list and click it.
For Windows 7 (32-bit): [R34V8AP]
For Windows 7 (64-bit): [R34V6AP]
- 14** Select [NT EMF 1.008] from the list of default data types, and click [OK].
- 15** Print a test page from the [General] tab.
- 16** Click [OK] to close the window.

In the case of network connection*1 / USB Flash Drive output*2

*1 This option is not available for KZ.

*2 Only for EZ5 series.

- 1** Open [Control Panel]-[Hardware and Sound]-[Devices and Printers] in this order, and select [Add a Printer] for starting.
- 2** Click [Add a local printer] of the [Add a Printer] dialog box.
- 3** Create the port.
In the case of network connection:
Create TCP/IP port or LPR port.
In the case of USB Flash Drive output:
Create the local port (C:\RISO\RISORINC.prn, etc.).
IMPORTANT!
You cannot create the local port in the route of the startup drive.
Create any folder, and then create the local port in the folder.
- 4** Insert the [RISO Printer Driver] CD-ROM into your computer.

5**Click [Have Disk].****6****In the [Browse] window, select the following inf file and click [OK].****In the case of a network connection:**For Windows 7(32-bit): (CD-ROM): [Windows 32-bit]-[RISO Printer Driver]-
[WinVista_7]-[English]-RISODRV.infFor Windows 7(64-bit): (CD-ROM): [Windows 64-bit]-[RISO Printer Driver]-
[WinVista_7]-[English]-RISODRV.inf**In the case of a USB Flash Drive output:**For Windows 7(32-bit): (CD-ROM): [Windows 32-bit]-[RISO Printer Driver]-
[WinVista_7]-[English]-[USB flash]-RISODRV.infFor Windows 7(64-bit): (CD-ROM): [Windows 64-bit]-[RISO Printer Driver]-
[WinVista_7]-[English]-[USB flash]-RISODRV.inf**7****Select [(Your printer name)] from the list and click [Next].****8****Enter the [Printer name] and click [Next].****9****In the case of network connection, print the test page.****10****Click [Finish] to close the window.****11****Restart your computer.**

■ Manual uninstallation

- 1** Open [Control Panel]-[Hardware and Sound]-[Devices and Printers] in this order, and delete the printer to uninstall from the printer folder.
- 2** Click on the existent printer and click [Print server properties] at the top of the window.
- 3** From the [Drivers] tab, select the Printer Driver to uninstall, and click [Remove].
- 4** When the [Remove Driver And Package] dialog opens, select [Remove driver and driver package.] to delete the driver and driver package.

For Windows 8/Windows 8.1

■ Manual installation

IMPORTANT!

- To install the Printer Driver, it is necessary to log on to Windows by the account with the authority to change the system setting (administrator etc.).
- Printer sharing is not supported.

In the case of USB cable connection

- 1** Turn the power of the printer on, and connect the USB cable to the printer.
- 2** Start your computer.
- 3** Connect the USB cable to your computer.
- 4** **Activate [Device Manager].**
Open the “Apps” screen and click [Control Panel]-[Hardware and Sound]-[Device Manager].
- 5** **Right-click [Other devices]-[(Your printer name)] and then click [Update Driver Software] from the menu that appears.**
NOTE If your printer name is not displayed, click [Action]-[Scan for hardware changes].
- 6** Click [Browse my computer for driver software].
- 7** Insert the [RISO Printer Driver] CD-ROM into your computer.
- 8** **Click [Browse], select the folder shown below and click [OK].**
For Windows 8 (32-bit)/Windows 8.1 (32-bit):
(CD-ROM):[Windows 32-bit]-[RISO Printer Driver]-[Win8]-[English]
For Windows 8 (64-bit)/Windows 8.1 (64-bit):
(CD-ROM):[Windows 64-bit]-[RISO Printer Driver]-[Win8]-[English]
- 9** **Select [(Your printer name)] from the list and click [Next].**
- 10** Click [Close] and restart your computer.

- 11** Open [Control Panel]-[Hardware and Sound]-[Devices and Printers] in this order, right-click on the installed printer and click [Printer properties] from the menu that appears.
- 12** Click [Print processor] of the [Advanced] tab.
- 13** Select the following print processor from the list and click it.
For Windows 8 (32-bit)/Windows 8.1 (32-bit): [R34V8AP]
For Windows 8 (64-bit)/Windows 8.1 (64-bit): [R34V6AP]
- 14** Select [NT EMF 1.008] from the list of default data types, and click [OK].
- 15** Print a test page from the [General] tab.
- 16** Click [OK] to close the window.

In the case of network connection*1 / USB Flash Drive output*2

*1 This option is not available for KZ.

*2 Only for EZ5 series.

- 1** Open [Control Panel]-[Hardware and Sound]-[Devices and Printers] in this order, and select [Add a Printer] for starting.
- 2** Click [Add a local printer] of the [Add a Printer] dialog box.
- 3** Create the port.
In the case of network connection:
Create TCP/IP port or LPR port.
In the case of USB Flash Drive output:
Create the local port (C:\RISO\RISORINC.prn, etc.).
IMPORTANT!
You cannot create the local port in the route of the startup drive.
Create any folder, and then create the local port in the folder.
- 4** Insert the [RISO Printer Driver] CD-ROM into your computer.

5**Click [Have Disk].****6****In the [Browse] window, select the following inf file and click [OK].****In the case of a network connection:**

For Windows 8(32-bit)/Windows 8.1(32-bit):

(CD-ROM):[Windows 32-bit]-[RISO Printer Driver]-[Win8]-[English]-RISODRV.inf

For Windows 8(64-bit)/Windows 8.1(64-bit):

(CD-ROM):[Windows 64-bit]-[RISO Printer Driver]-[Win8]-[English]-RISODRV.inf

In the case of a USB Flash Drive output:

For Windows 8(32-bit)/Windows 8.1(32-bit):

(CD-ROM):[Windows 32-bit]-[RISO Printer Driver]-[Win8]-[English]-[USB flash]-RISODRV.inf

For Windows 8(64-bit)/Windows 8.1(64-bit):

(CD-ROM):[Windows 64-bit]-[RISO Printer Driver]-[Win8]-[English]-[USB flash]-RISODRV.inf

7**Select [(Your printer name)] from the list and click [Next].****8****Enter the [Printer name] and click [Next].****9****In the case of network connection, print the test page.****10****Click [Finish] to close the window.****11****Restart your computer.**

■ Manual uninstallation

- 1** Open [Control Panel]-[Hardware and Sound]-[Devices and Printers] in this order, and delete the printer to uninstall from the printer folder.
- 2** Click on the existent printer and click [Print server properties] at the top of the window.
- 3** From the [Drivers] tab, select the Printer Driver to uninstall, and click [Remove].
- 4** When the [Remove Driver And Package] dialog opens, select [Remove driver and driver package.] to delete the driver and driver package.

For Windows 10

■ Manual installation

IMPORTANT!

- To install the Printer Driver, it is necessary to log on to Windows by the account with the authority to change the system setting (administrator etc.).
- Printer sharing is not supported.

In the case of USB cable connection

- 1** Turn the power of the printer on, and connect the USB cable to the printer.
- 2** Start your computer.
- 3** Connect the USB cable to your computer.
- 4** Activate [Device Manager].
Right-click on the [Start] icon and click [Control Panel]-[Hardware and Sound]-[Device Manager].
- 5** Right-click [Other devices]-[(Your printer name)] and then click [Update Driver Software] from the menu that appears.
NOTE If your printer name is not displayed, click [Action]-[Scan for hardware changes].
- 6** Click [Browse my computer for driver software].
- 7** Insert the [RISO Printer Driver] CD-ROM into your computer.
- 8** Click [Browse], select the folder shown below and click [OK].
For Windows 10 (32-bit):
(CD-ROM):[Windows 32-bit]-[RISO Printer Driver]-[Win8]-[English]
For Windows 10 (64-bit):
(CD-ROM):[Windows 64-bit]-[RISO Printer Driver]-[Win8]-[English]
- 9** Select [(Your printer name)] from the list and click [Next].
- 10** Click [Close] and restart your computer.

- 11** Open [Control Panel]-[Hardware and Sound]-[Devices and Printers] in this order, right-click on the installed printer and click [Printer properties] from the menu that appears.
- 12** Click [Print processor] of the [Advanced] tab.
- 13** Select the following print processor from the list and click it.
For Windows 10 (32-bit): [R34V8AP]
For Windows 10 (64-bit): [R34V6AP]
- 14** Select [NT EMF 1.008] from the list of default data types, and click [OK].
- 15** Print a test page from the [General] tab.
- 16** Click [OK] to close the window.

In the case of network connection*1 / USB Flash Drive output*2

*1 This option is not available for KZ.

*2 Only for EZ5 series.

- 1** Open [Control Panel]-[Hardware and Sound]-[Devices and Printers] in this order, and select [Add a Printer] for starting.
- 2** Click [Add a local printer] of the [Add a Printer] dialog box.
- 3** Create the port.
In the case of network connection:
Create TCP/IP port or LPR port.
In the case of USB Flash Drive output:
Create the local port (C:\RISO\RISORINC.prn, etc.).
IMPORTANT!
You cannot create the local port in the route of the startup drive.
Create any folder, and then create the local port in the folder.
- 4** Insert the [RISO Printer Driver] CD-ROM into your computer.

- 5** Click **[Have Disk]**.
- 6** In the **[Browse]** window, select the following inf file and click **[OK]**.
In the case of a network connection:
For Windows 10 (32-bit):
(CD-ROM):[Windows 32-bit]-[RISO Printer Driver]-[Win8]-[English]-RISODRV.inf
For Windows 10 (64-bit):
(CD-ROM):[Windows 64-bit]-[RISO Printer Driver]-[Win8]-[English]-RISODRV.inf
In the case of a USB Flash Drive output:
For Windows 10 (32-bit):
(CD-ROM):[Windows 32-bit]-[RISO Printer Driver]-[Win8]-[English]-[USB flash]-RISODRV.inf
For Windows 10 (64-bit):
(CD-ROM):[Windows 64-bit]-[RISO Printer Driver]-[Win8]-[English]-[USB flash]-RISODRV.inf
- 7** Select **[(Your printer name)]** from the list and click **[Next]**.
- 8** Enter the **[Printer name]** and click **[Next]**.
- 9** In the case of network connection, print the test page.
- 10** Click **[Finish]** to close the window.
- 11** Restart your computer.

■ Manual uninstallation

- 1** Open [Control Panel]-[Hardware and Sound]-[Devices and Printers] in this order, and delete the printer to uninstall from the printer folder.
- 2** Click on the existent printer and click [Print server properties] at the top of the window.
- 3** From the [Drivers] tab, select the Printer Driver to uninstall, and click [Remove].
- 4** When the [Remove Driver And Package] dialog opens, select [Remove driver and driver package.] to delete the driver and driver package.



Appendix

Troubleshooting Tips	98
Error Message on PC's Display	98
Operation Problems	99

Troubleshooting Tips

Error Message on PC's Display

Take actions as given below if the following error messages appear in the PC's display.

Message	Description and Action
The printer is not ready for printing. (The device is not ready.)	<ul style="list-style-type: none">❑ This message appears when your RISO printer requires paper or it is not connected to your computer properly. Action Replenish paper or check your RISO printer and the printer cable for poor connection, and then restart printing.❑ This message also appears when the memory of your RISO printer becomes full during data transmission because the size of the document data concerned is too large. Action Reduce the file size of the document data concerned or increase the value of the [Timeout] setting in your computer system, and then restart printing.
Cannot print because an error is found in the current printer settings.	<ul style="list-style-type: none">❑ This message appears if the printer settings (paper size, print orientation, etc.) in the application software and the Printer Driver do not match. Action Change the printer settings in the application software to make them identical with those in the Printer Driver or vice versa.

Operation Problems

Check your system setup as given below if you encounter the following operation problems. Contact your service representative for help if you cannot solve the problem.

No Printout_____

Problem

Your RISO printer is not receiving data from your computer even after the print job finishes in the application software.

Cause / Condition and Action

- ☐ Your computer is not securely connected to your RISO printer.

Action Connect the printer cable (or network cable) to both your computer and your RISO printer securely.

- ☐ The [RISO...] Printer Driver is not selected.

Action Select it and reprint.

- ☐ [Printing] is displayed as the printer status when you open the [RISO...] printer monitor window.

Action Wait until the printer status display changes in the [RISO...] printer monitor window.

Problem

Your RISO printer cannot finish processing the current document data.

Cause / Condition and Action

- ❑ The printer cable (or network cable) was removed just after a print job started in the application software. ([Printing] is displayed when you open the [RISO...] printer monitor window in this case.)

Action > Reconnect the cable and cancel the current job in the [RISO...] printer monitor window. Then turn off the main power switch of your RISO printer. After approximately 10 seconds, turn it on again.

- ❑ [Pause] is displayed as the printer status when you open the [RISO...] printer monitor window.

Action > Click [Restart] in the [Document] menu in the [RISO...] printer monitor window.

- ❑ The printer settings (paper size, print orientation, etc.) in the application software and in the Printer Driver do not match.

Action > Change the printer settings in the application software to make them identical with those in the Printer Driver or vice versa, and repeat the print job from the application software.

- ❑ The print job has been canceled before completion in the application software on your computer.

Action > Turn off the main power switch of your RISO printer. After approximately 10 seconds, turn it on again.

Your RISO printer won't start making master when the documentation data is transmitted from your computer or your RISO printer won't start printing after making master.

- ❑ If you set the [Process] to a setting other than "Full-auto", the process stops in operation in order to wait for instructions.

Action > Press Start key on your RISO printer. The next process starts.

Unexpected Print Result

Problem	Cause / Condition and Action
Graphics cannot be printed properly.	<ul style="list-style-type: none"><input type="checkbox"/> The current [RISO...] printer driver was not selected as active when editing graphics. Action Select the current [RISO...] Printer Driver and edit graphics again because graphics may not be printed properly if they are edited with another Printer Driver selected.<input type="checkbox"/> The specified custom paper size was so large that unexpected margins were assigned on a page. Action Select another paper size or specify the custom paper size within the valid range.
Images are reduced unexpectedly.	<ul style="list-style-type: none"><input type="checkbox"/> Do you use the Printer Driver corresponding to your RISO printer? Action If the name of your RISO printer is different from the model name of your Printer Driver, the document data cannot be printed out correctly.
Some fonts cannot be printed properly.	<ul style="list-style-type: none"><input type="checkbox"/> The [Use Printer Font] option is selected in the application software. Action Cancel the [Use Printer Font] option in the application software.
The page image is not centered or is clipped at an edge.	<ul style="list-style-type: none"><input type="checkbox"/> The paper size setting in the application software is not identical with that in the Printer Driver. Action Make both paper size setting identical.<input type="checkbox"/> The print area specified in the application software is beyond the maximum print area of your RISO printer. Action Increase the border margins in the application software to contain the page image within the printable area of your RISO printer.<input type="checkbox"/> There is something wrong with the Print cylinder (drum) in your RISO printer. Action Check your RISO printer, referring to the dedicated user's guide.

Unexpected Action

Problem	Cause / Condition and Action
Your RISO printer repeats the master-making process for each copy of the identical page.	<ul style="list-style-type: none"><input type="checkbox"/> The [Collate] check box is selected in the [Print] dialog box in the application software.Action > Cancel the current print job on your computer and turn off the main power switch of your RISO printer. After approximately 10 seconds, turn it on again. Always cancel the [Collate Copies] or [Collate] option in the [Print] dialog box when starting a print job.
Your RISO printer does not operate as specified in the [Sorter control] option in the Printer Driver.	<ul style="list-style-type: none"><input type="checkbox"/> The finishing job specified in the [Sorter control] option is not available for the current combination of your RISO printer and an optional sorter.Action > Refer to the dedicated user's guides of your RISO printer and the optional sorter.
Your RISO printer cannot print at the speed specified in the [Printspeed] option in the Printer Driver.	<ul style="list-style-type: none"><input type="checkbox"/> The print speed remains constant when a certain mode is selected in the [Sorter control] option in the Printer Driver, for your RISO printer which is equipped with a certain type of optional sorter.Action > Refer to the corresponding page for detailed description about the [Sorter control] option. (Page 66)
Original data cannot be output to the USB Flash Drive. (EZ5 series)	<ul style="list-style-type: none"><input type="checkbox"/> Are you using the Printer Driver for USB Flash Drive? There are two types of Printer Drivers. To output to a USB Flash Drive, install the USB flash-via-Printer Driver. Data cannot be output to a USB Flash Drive using an ordinary Printer Driver. (Page 36)<input type="checkbox"/> Are you using a USB Flash Drive formatted for RISO folders? Create a folder just for RISO files in the USB Flash Drive. (Page 42)

Unable to Specify Settings _____

Problem	Cause / Condition and Action
A name cannot be entered in the dialog box to register the custom paper size.	<input type="checkbox"/> The name is too long for the corresponding field. Action Valid range of the length is 30 characters.
A desired value cannot be entered in the corresponding fields to register the custom paper size.	<input type="checkbox"/> The value does not fall within the range. Action Enter the value within the valid ranges into the relevant fields.
The custom paper size cannot be registered in the [RISO...] printer driver.	<input type="checkbox"/> The relevant dialog box was not closed correctly. Action Add the desired custom paper size in the relevant dialog box ([Custom Paper List] once more, and then click [OK] or [Save] before closing the dialog box. (Page 47)
The specified custom paper size cannot be selected in the application software.	<input type="checkbox"/> [Custom] is not selected in the [Paper Size] option in the [Properties] dialog box of the Printer Driver. Action Select [Custom] in the [Paper Size] option. <input type="checkbox"/> [Paper Size: Custom] cannot be selected in the [Printer Setup] dialog box in the application software. Action Specify a standard paper size which is larger than the specified custom one.

RISO